

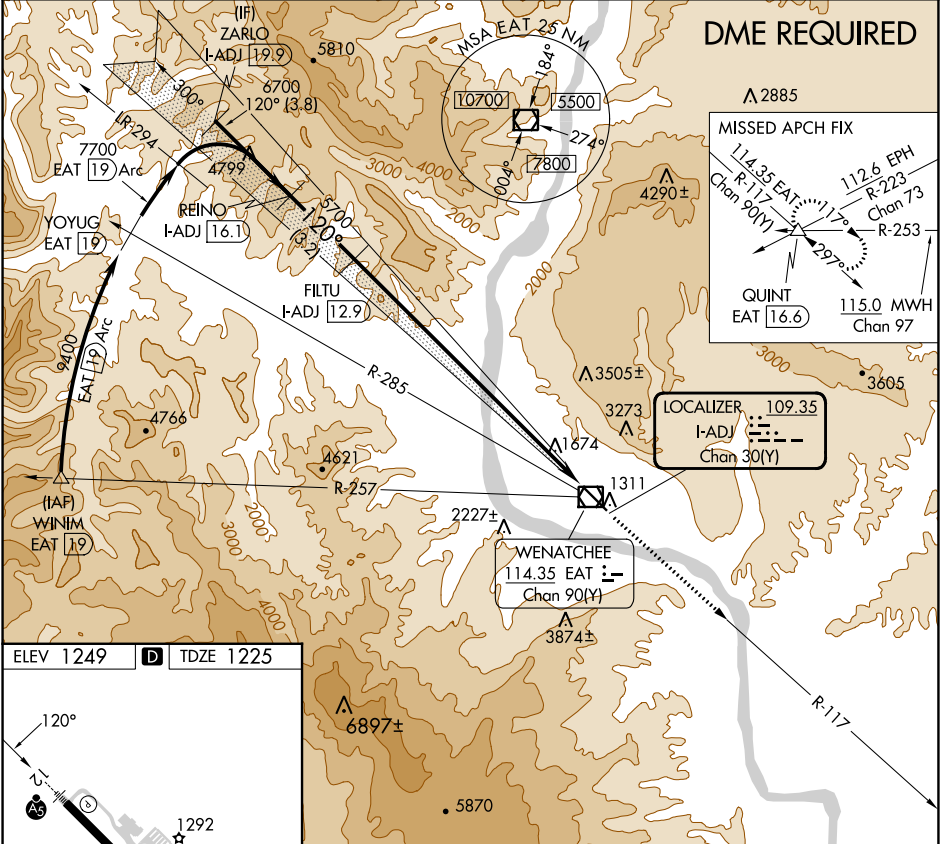
LOC/DME I-ADJ 109.35 Chan 30(Y)	APP CRS 120°	Rwy Idg 7000	TDZE 1225
		Apt Elev 1249	

ILS Y RWY 12

PANGBORN MEML (EAT)

 DME required. -7°C	 MALS R	MISSED APPROACH: Climb to 2700 then climb to 4000 direct EAT VOR/DME and on EAT VOR/DME R-117 to QUINT INT/EAT 16.6 DME and hold.
---------------------------	------------	---

ASOS 119.925	SEATTLE CENTER 126.1	UNICOM 123.0 (CTAF)
------------------------	--------------------------------	-------------------------------



DME REQUIRED

Δ 2885

MISSED APCH FIX

114.35 EAT Chan 90(Y)

112.6 EPH R-223 Chan 73

115.0 MWH Chan 97

QUINT EAT 16.6

R-253

R-297

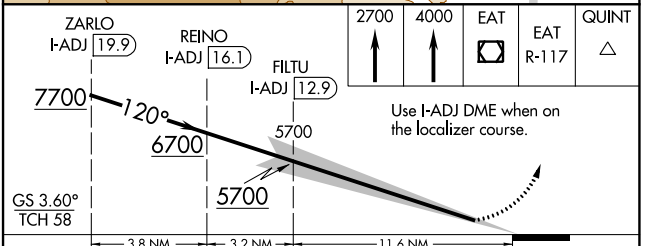
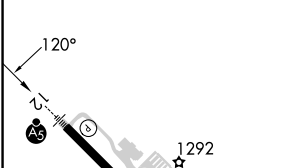
R-294

R-285

R-257

R-117

ELEV 1249		TDZE 1225
-----------	--	-----------



CATEGORY	A	B	C	D
S-ILS 12	2433-4	1208 (1200-4)		NA

NW-1, 22 FEB 2024 to 21 MAR 2024

NW-1, 22 FEB 2024 to 21 MAR 2024

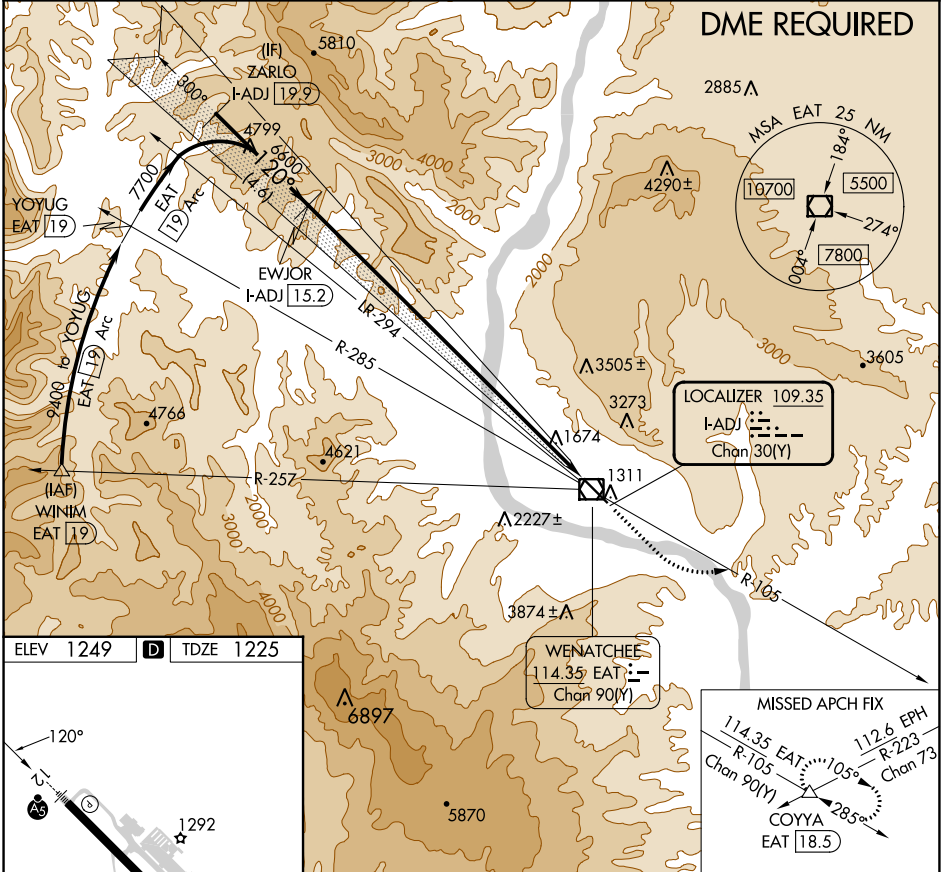
LOC/DME I-ADJ 109.35 Chan 30(Y)	APP CRS 120°	Rwy Idg TDZE Apt Elev	7000 1225 1249
---	------------------------	-----------------------------	---

ILS Z RWY 12

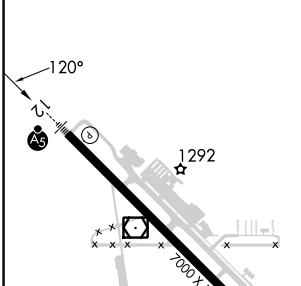
PANGBORN MEML (EAT)

<p>DME required.</p>	<p>MALSR</p>	<p>MISSED APPROACH: Climb to 1820 then climb to 5500 on EAT VOR/DME R-105 to COYYA INT/EAT 18.5 DME and hold.</p>
		<p>*Missed approach requires minimum climb of 420' per NM to 3200; if unable to meet climb gradient, see ILS Y RWY 12.</p>

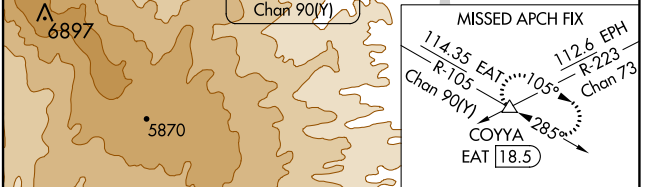
ASOS 119.925	SEATTLE CENTER 126.1	UNICOM 123.0 (CTAF) 0
------------------------	--------------------------------	---------------------------------



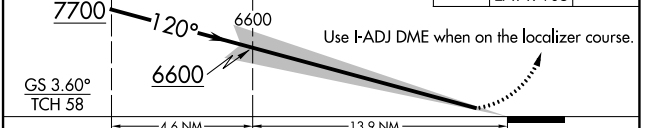
ELEV 1249	D	TDZE 1225
-----------	----------	-----------



REIL Rwy 30 0	HIRL Rwy 12-30 0
----------------------	-------------------------



ZARLO I-ADJ 19.9	EWJOR I-ADJ 15.2	1820	5500	COYYA
		↑	↑	△
		EAT R-105		



GS 3.60° TCH 58	4.6 NM	13.9 NM		
CATEGORY	A	B	C	D
S-ILS 12	1555-1	330 (400-1)		NA

NW-1, 22 FEB 2024 to 21 MAR 2024


NW-1, 22 FEB 2024 to 21 MAR 2024

APP CRS	Rwy Idg	7000
120°	TDZE	1225
	Apt Elev	1249

RNAV (RNP) RWY 12

PANGBORN MEML (EAT)

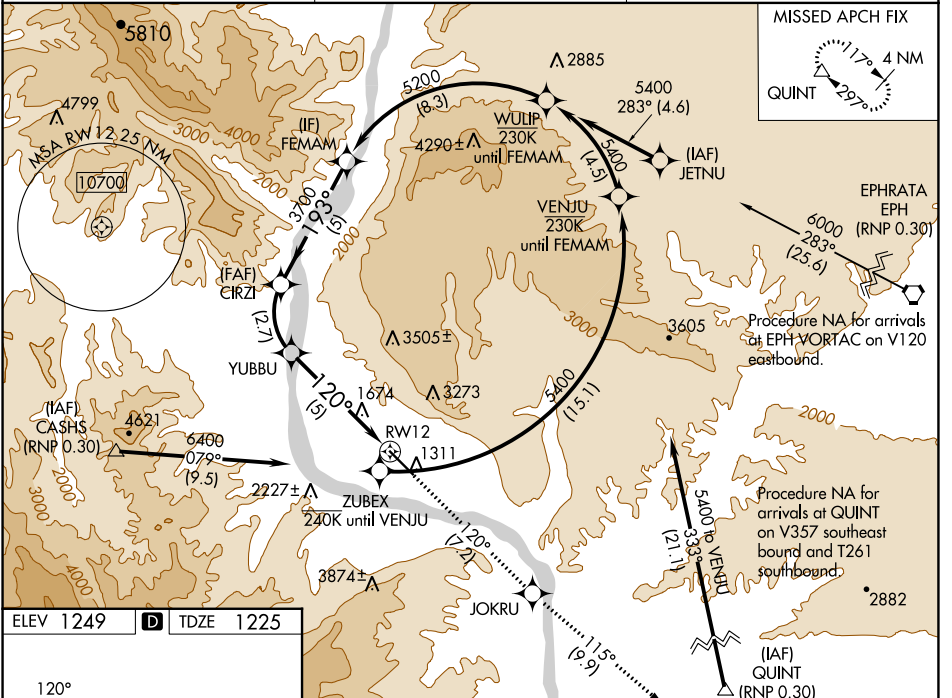
⚠ For uncompensated Baro-VNAV systems, procedure NA below -10°C (14°F) or above 54°C (130°F). RF required. GPS required. FD or HUD required.

MALSRS  MISSED APPROACH: Climb to 5400 on track 120° to JOKRU and on track 115° to QUINT and hold.
 *Missed approach requires a minimum climb of 319 feet per NM to 3700.
 #Missed approach requires a minimum climb of 295 feet per NM to 3700.

ASOS **119.925**

SEATTLE CENTER **126.1**

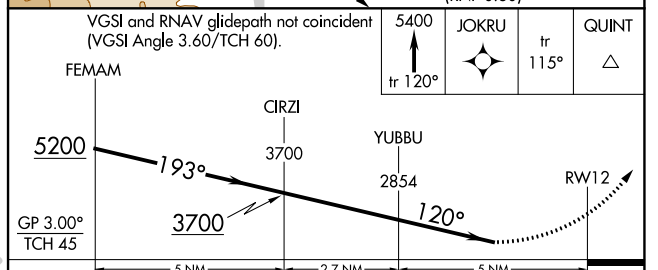
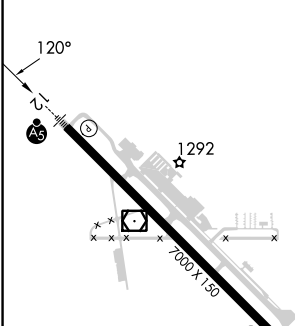
UNICOM **123.0 (CTAF) 0**



NW-1, 22 FEB 2024 to 21 MAR 2024

NW-1, 22 FEB 2024 to 21 MAR 2024

ELEV 1249	D	TDZE 1225
-----------	----------	-----------



CATEGORY	A	B	C	D
RNP 0.15 DA*		1995-3	770 (800-3)	
RNP 0.19 DA#		2072-3	847 (900-3)	
RNP 0.30 DA		2417-5	1192 (1200-5)	

AUTHORIZATION REQUIRED

APP CRS	Rwy Idg	7000
300°	TDZE	1232
	Apt Elev	1249

RNAV (RNP) Z RWY 30

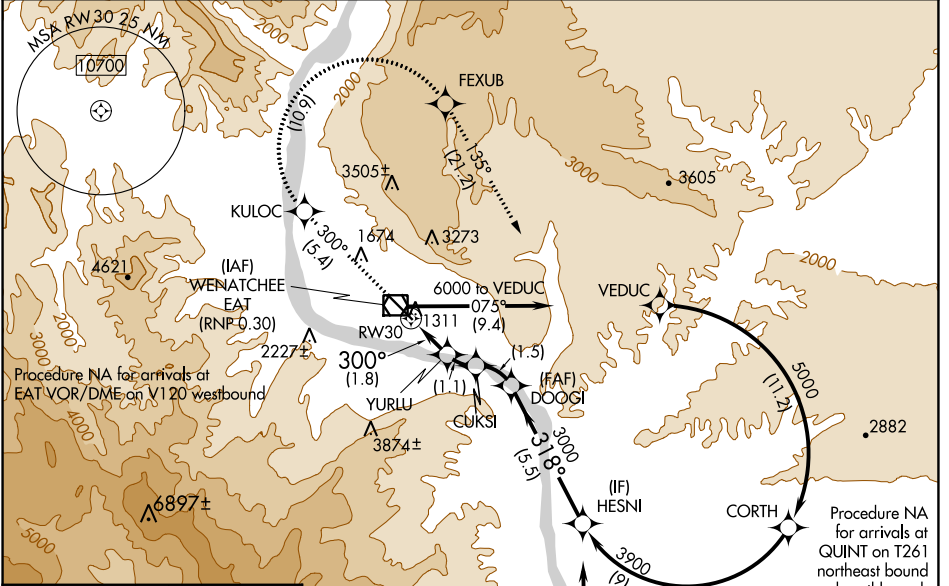
PANGBORN MEML (EAT)

▽ -7°C For uncompensated Baro-VNAV systems, procedure NA below -10°C (14°F) or above 44°C (111°F). RF required. GPS required. FD or HUD required.

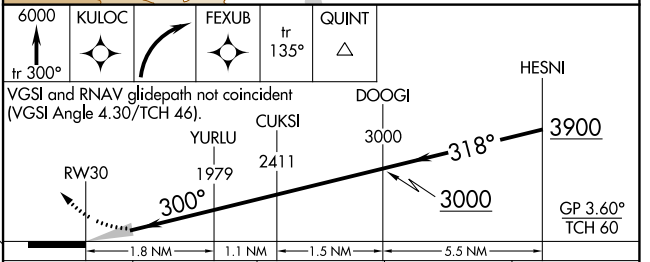
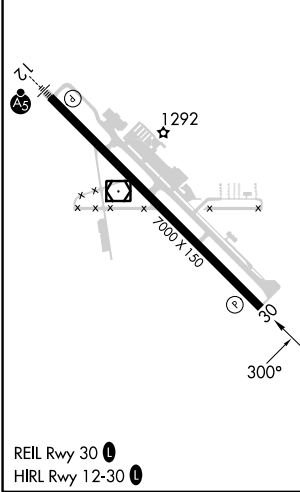
MISSED APPROACH: Climb to 6000 on track 300° to KULOC, right turn to FEXUB, and on track 135° to QUINT and hold.

* Missed approach requires minimum climb of 320 feet per NM to 5500.
Missed approach requires minimum climb of 325 feet per NM to 5500.

ASOS 119.925	SEATTLE CENTER 126.1	UNICOM 123.0 (CTAF) 📻
------------------------	--------------------------------	--



ELEV 1249	D	TDZE 1232
-----------	----------	-----------



CATEGORY	A	B	C	D
RNP 0.17 DA*	1595-1	363 (400-1)		NA
RNP 0.30 DA#	1686-1 3/8	454 (500-1 3/8)		NA

AUTHORIZATION REQUIRED


NW-1, 22 FEB 2024 to 21 MAR 2024

NW-1, 22 FEB 2024 to 21 MAR 2024

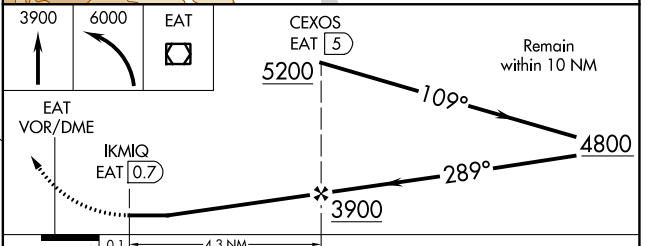
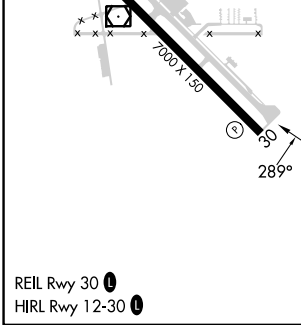
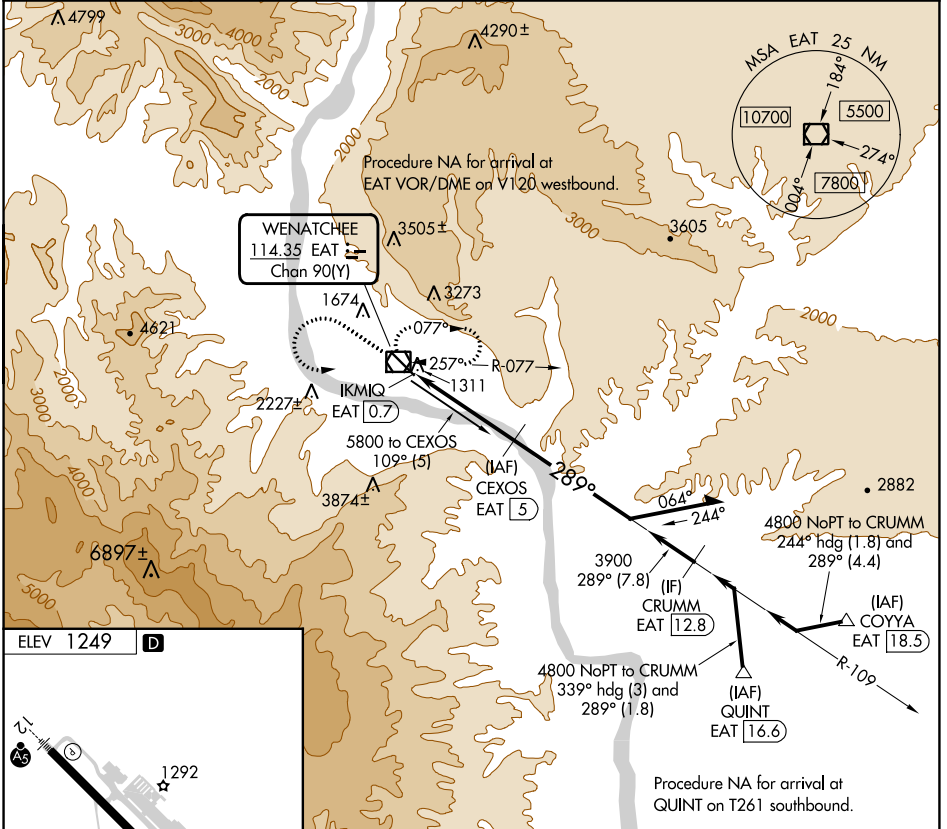
VOR/DME EAT 114.35 Chan 90(Y)	APP CRS 289°	Rwy Idg TDZE Apt Elev N/A N/A 1249
---	------------------------	---


VOR-A

PANGBORN MEML (EAT)

 DME required.  Circling NA northeast of Rwy 12-30.	MISSED APPROACH: Climb to 3900 then climbing left turn to 6000 direct EAT VOR/DME and hold, continue climb-in-hold to 6000.
--	---

ASOS 119.925	SEATTLE CENTER 126.1	UNICOM 123.0 (CTAF)
------------------------	--------------------------------	-------------------------------



CATEGORY	A	B	C	D
 CIRCLING	3180-1¼ 1931 (2000-1¼)	3180-1½ 1931 (2000-1½)	3200-3 1951 (2000-3)	3900-3 2651 (2700-3)

NW-1, 22 FEB 2024 to 21 MAR 2024

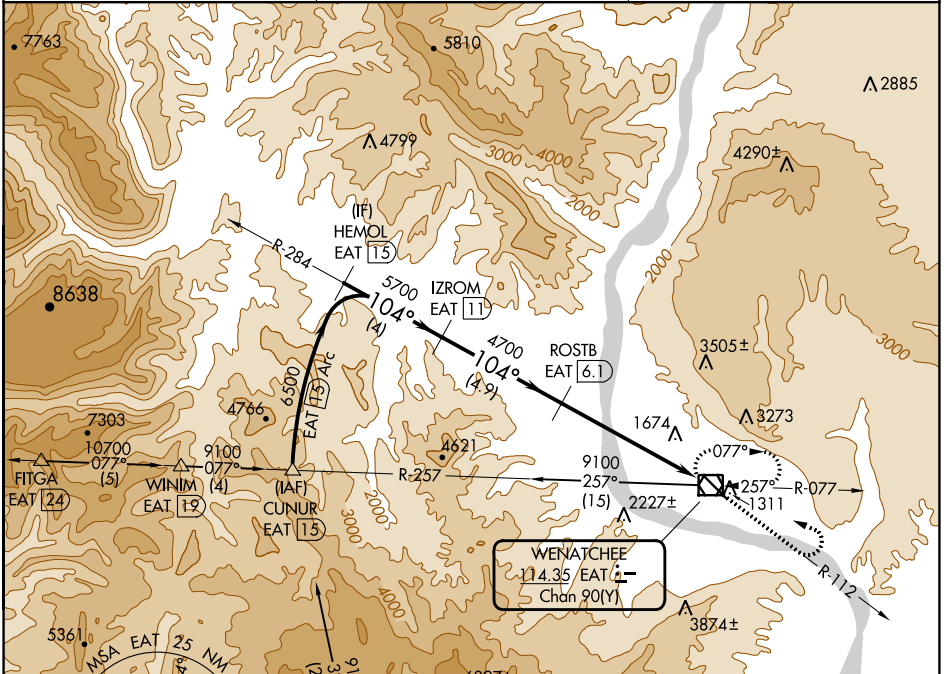
NW-1, 22 FEB 2024 to 21 MAR 2024

VOR/DME EAT 114.35 Chan 90(Y)	APP CRS 104°	Rwy Idg TDZE Apt Elev 1249	N/A N/A N/A
---	------------------------	--------------------------------------	-------------------

VOR-B
PANGBORN MEML (EAT)

DME required. Circling NA northeast of Rwy 12-30.	MISSED APPROACH: Climb to 4300 on EAT VOR/DME R-112 then climbing left turn to 7500 direct EAT VOR/DME and hold, continue climb-in-hold to 7500.
--	--

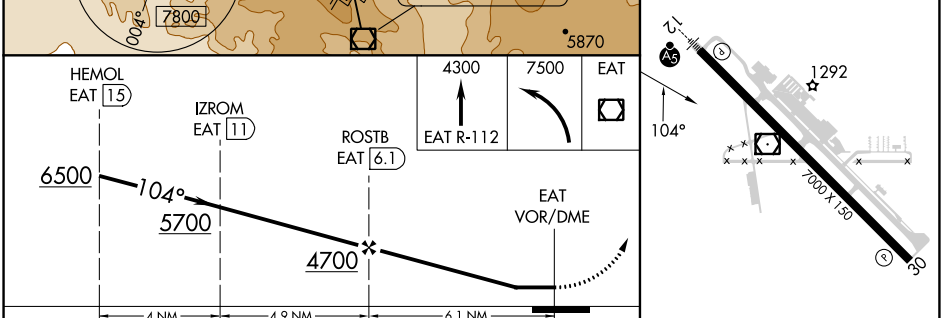
ASOS 119.925	SEATTLE CENTER 126.1	UNICOM 123.0 (CTAF) 0
------------------------	--------------------------------	---------------------------------



NW-1, 22 FEB 2024 to 21 MAR 2024

NW-1, 22 FEB 2024 to 21 MAR 2024

ELEV 1249	
-----------	--



CATEGORY	A	B	C	D	REIL Rwy 30 0	HIRL Rwy 12-30 0
CIRCLING	2660-1¼ 1411 (1500-1¼)	2660-1½ 1411 (1500-1½)	3200-3 1951 (2000-3)	3900-3 2651 (2700-3)		