

| | | | |
|--|------------------------|-----------------------------|---|
| WAAS CH 86320 W22A | APP CRS 222° | Rwy Idg TDZE Apt Elev | 5004 334 338 |
|--|------------------------|-----------------------------|---|

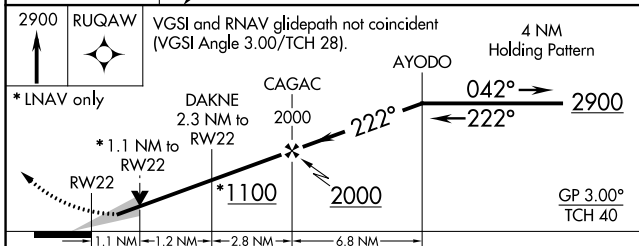
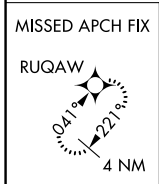
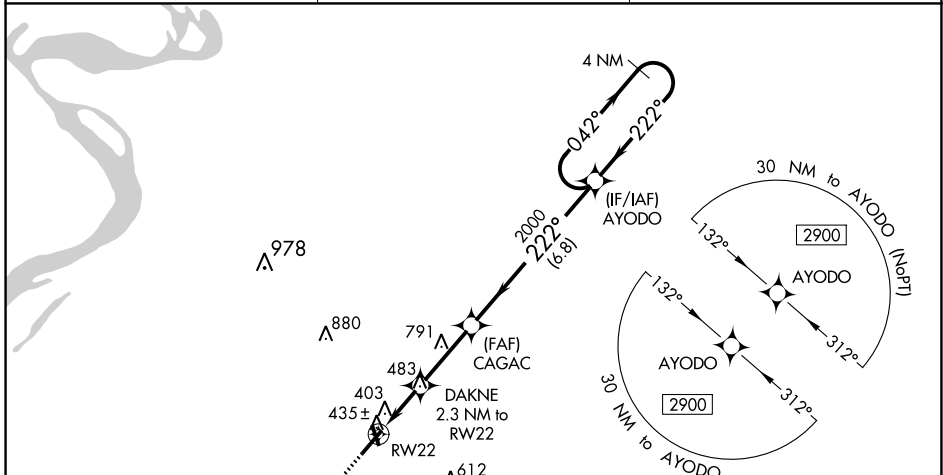
RNAV (GPS) RWY 22

DYERSBURG RGNL (DYR)

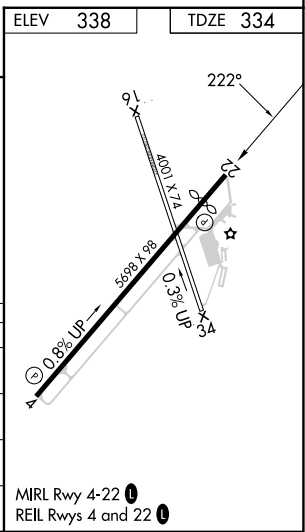
▼ For uncompensated Baro-VNAV systems, LNAV/VNAV NA below -15°C (5°F) or above 54°C (130°F).
▲ Baro-VNAV and VDP NA when using Blytheville Muni altimeter setting. DME/DME RNP-0.3 NA.
 When local altimeter setting not received, use Blytheville Muni altimeter setting: increase LPV DA to 644 feet, and LNAV/VNAV DA to 676 feet and all MDA 60 feet; increase LPV visibility all Cats 1/8 SM, and LNAV/VNAV visibility all Cats, LNAV Cats C/D visibility and Circling Cat C visibility 1/4 SM.
 Night landing: Rwy 16, 34 NA.

MISSED APPROACH:
 Climb to 2900 direct
 RUGAW and hold.

| | | |
|----------------------------|--|----------------------------------|
| AWOS-3PT 135.625 | MEMPHIS CENTER 134.65 316.15 | UNICOM 123.05 (CTAF) 0 |
|----------------------------|--|----------------------------------|



| CATEGORY | A | B | C | D |
|--------------|----------------------|----------------------|-----------------------|------------------------|
| LPV DA | | 584-7/8 | 250 (300-7/8) | |
| LNAV/VNAV DA | | 616-7/8 | 282 (300-7/8) | |
| LNAV MDA | | 700-1 | 366 (400-1) | |
| CIRCLING | 740-1 402 (500-1) | 800-1 462 (500-1) | 1040-2 702 (800-2) | 1240-3 902 (1000-3) |



SE-1, 22 FEB 2024 to 21 MAR 2024

SE-1, 22 FEB 2024 to 21 MAR 2024

| | | | |
|--|------------------------|-----------------------------|---|
| WAAS CH 82320 W04A | APP CRS 041° | Rwy ldg TDZE Apt Elev | 5698 316 338 |
|--|------------------------|-----------------------------|---|

RNAV (GPS) RWY 4

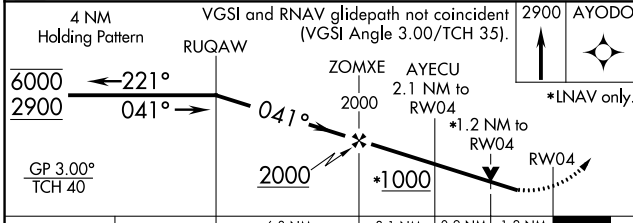
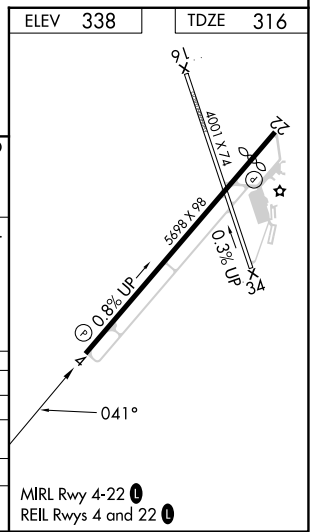
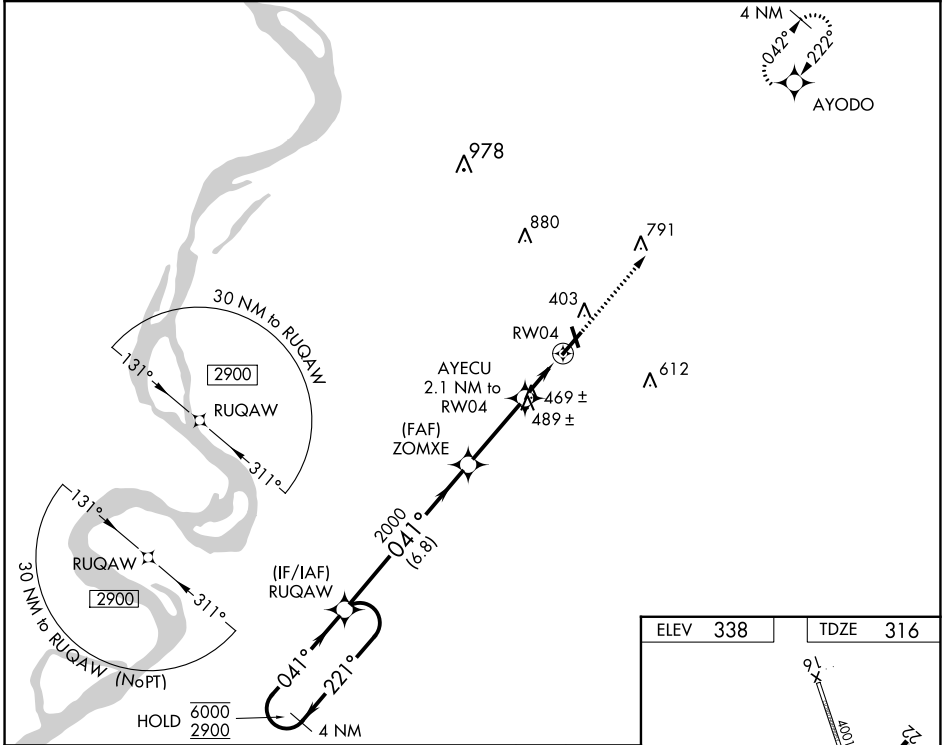
DYERSBURG RGNL (DYR)

RNP APCH.

⚠ Circling to Rwy 16, 34 NA at night. Rwy 4 helicopter visibility reduction below 3/4 SM NA. For uncompensated Baro-VNAV systems, LNAV/VNAV NA below -15°C or above 54°C.

MISSED APPROACH: Climb to 2900 direct AYODO and hold.

| | | |
|----------------------------|--|----------------------------------|
| AWOS-3PT 135.625 | MEMPHIS CENTER 134.65 316.15 | UNICOM 123.05 (CTAF) 0 |
|----------------------------|--|----------------------------------|



| | | | | |
|--------------|----------------------|----------------------|-----------------------|------------------------|
| CATEGORY | A | B | C | D |
| LPV DA | 588-1 272 (300-1) | | | |
| LNAV/VNAV DA | 801-1 485 (500-1) | | | |
| LNAV MDA | 720-1 | 404 (400-1) | 720-1 404 (400-1) | |
| CIRCLING | 740-1 402 (500-1) | 800-1 462 (500-1) | 1040-2 702 (800-2) | 1240-3 902 (1000-3) |

SE-1, 22 FEB 2024 to 21 MAR 2024

SE-1, 22 FEB 2024 to 21 MAR 2024