

APP CRS 229°	Rwy Idg TDZE Apt Elev	3004 394 394
------------------------	-----------------------------	---

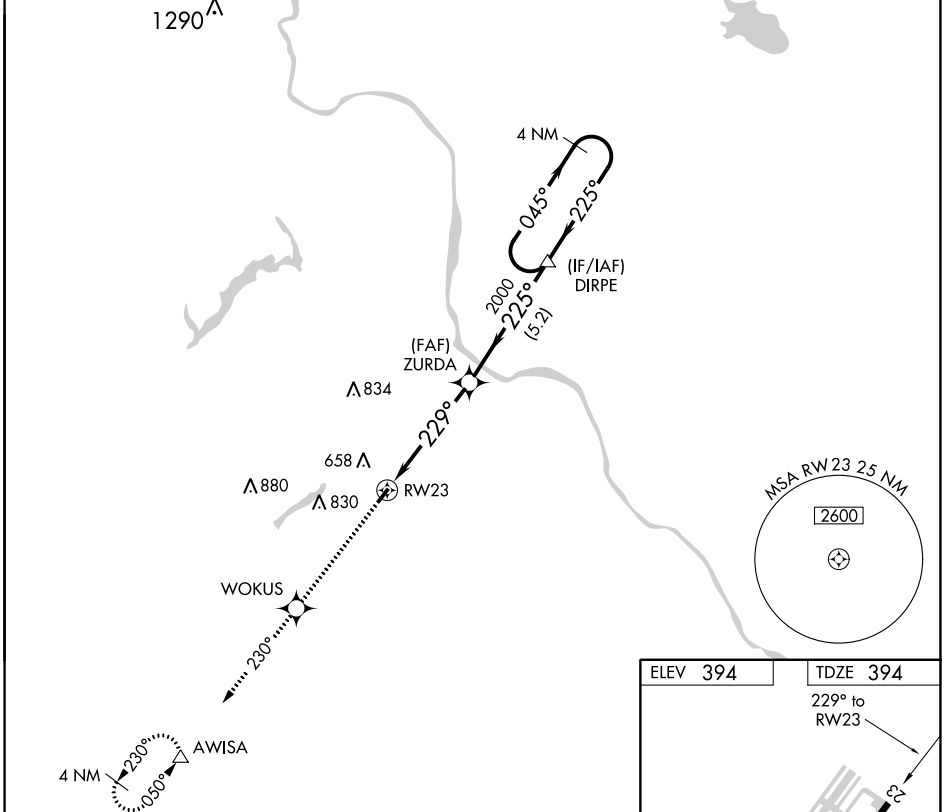
RNAV (GPS) RWY 23

DOYLESTOWN (DYL)

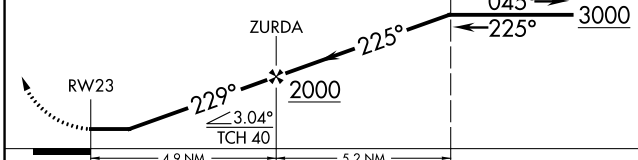
▽ DME/DME RNP-0.3 NA. When local altimeter setting not received, use Trenton altimeter setting and increase all MDA 60 feet. Rwy 23: helicopter visibility reduction below 1 SM NA.

▲ MISSED APPROACH: Climb to 3000 direct WOKUS and via track 230° to AWISA and hold.

ASOS 118.875	PHILADELPHIA APP CON 123.8 291.7	CLNC DEL 118.55	UNICOM 122.975 (CTAF) 0
------------------------	--	---------------------------	-----------------------------------



3000	WOKUS	tr 230°	AWISA	VGSI and descent angles not coincident (VGSI Angle 3.00/TCH 20).	4 NM Holding Pattern
------	-------	---------	-------	--	----------------------



ELEV 394	TDZE 394
229° to RWY 23	

REIL Rwy 23 0
MIRL Rwy 5-23 0

CATEGORY	A	B	C	D
LNVA MDA	1040-1	646 (700-1)	NA	
CIRCLING	1040-1	646 (700-1)	NA	

NE-4, 22 FEB 2024 to 21 MAR 2024

NE-4, 22 FEB 2024 to 21 MAR 2024

RNAV (GPS) RWY 5

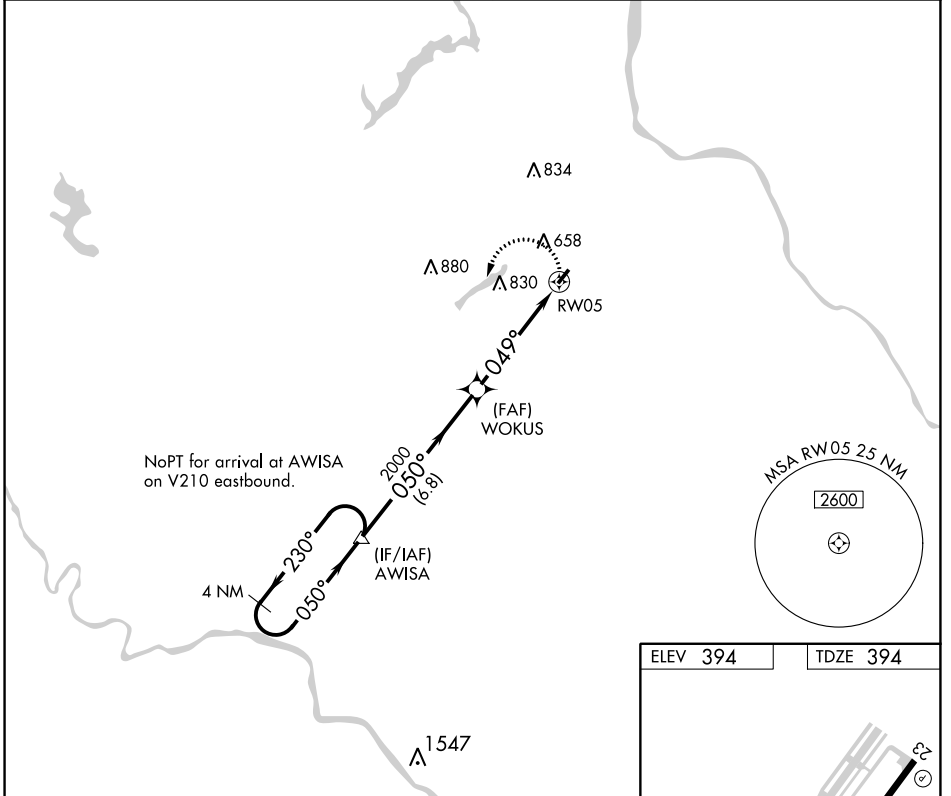
DOYLESTOWN (DYL)

APP CRS 049°	Rwy Idg 3002
	TDZE 394
	Apt Elev 394

▼ DME/DME RNP-0.3 NA. Rwy 5: helicopter visibility reduction below $\frac{3}{4}$ SM NA.
▲ When local altimeter setting not received, use Trenton altimeter setting and increase all MDA 60 feet.

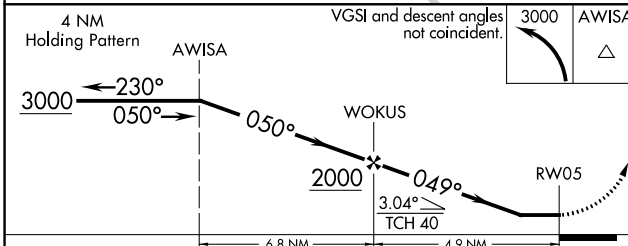
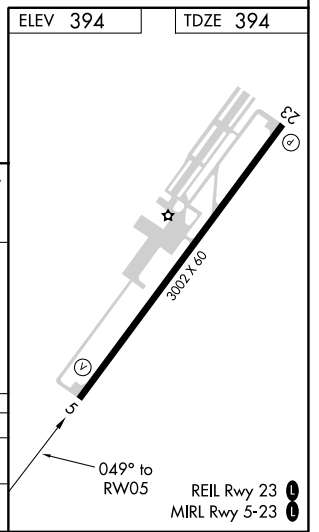
MISSED APPROACH: Climbing left turn to 3000 direct AWISA and hold.

ASOS 118.875	PHILADELPHIA APP CON 123.8 291.7	CLNC DEL 118.55	UNICOM 122.975 (CTAF) 0
------------------------	--	---------------------------	-----------------------------------



NE-4, 22 FEB 2024 to 21 MAR 2024

NE-4, 22 FEB 2024 to 21 MAR 2024



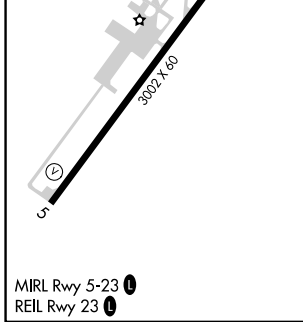
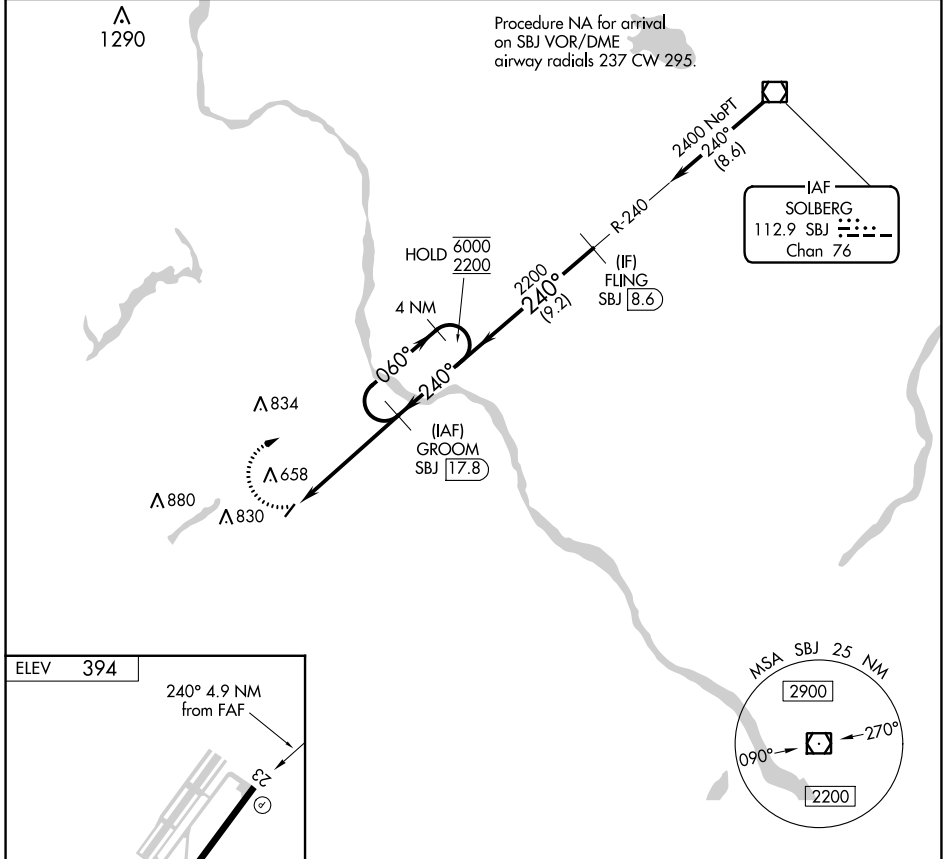
CATEGORY	A	B	C	D
LNVA MDA	880-1	486 (500-1)	NA	
CIRCLING	960-1 566 (600-1)	1040-1 646 (700-1)	NA	

SBJ VOR/DME 112.9 Chan 76	APP CRS 240°	Rwy Idg TDZE Apt Elev	N/A N/A 394
---	------------------------	-----------------------------	--

VOR-A
DOYLESTOWN (DYL)

DME required.	MISSED APPROACH: Climbing right turn to 2200 on SBJ VOR/DME R-240 to GROOM/17.8 DME and hold.
<p>▼ When local altimeter setting not received, use Trenton altimeter setting and increase all MDAs 80 feet.</p> <p>▲</p>	

ASOS 118.875	PHILADELPHIA APP CON 123.8 291.7	CLNC DEL 118.55	UNICOM 122.975 (CTAF) 0
------------------------	--	---------------------------	--



2200	SBJ R-240	GROOM SBJ (17.8)	4 NM Holding Pattern
		GROOM SBJ (17.8)	
		6000	2200
CATEGORY		A	B
CIRCLING		1 260-1¼	866 (900-1¼)
		C	D
		NA	

NE-4, 22 FEB 2024 to 21 MAR 2024

NE-4, 22 FEB 2024 to 21 MAR 2024