

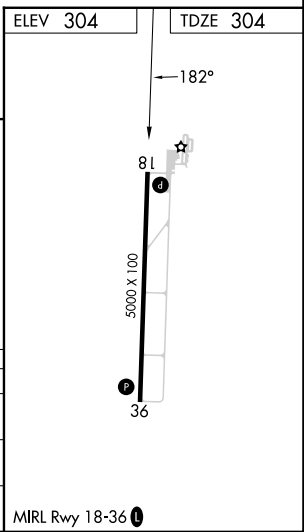
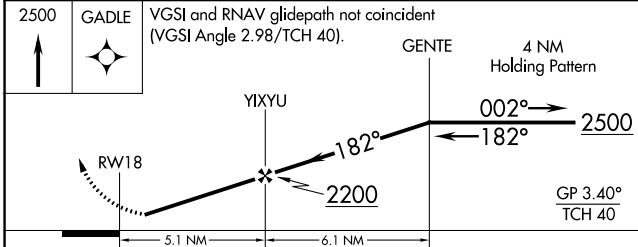
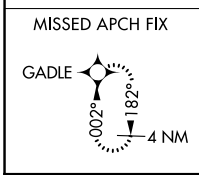
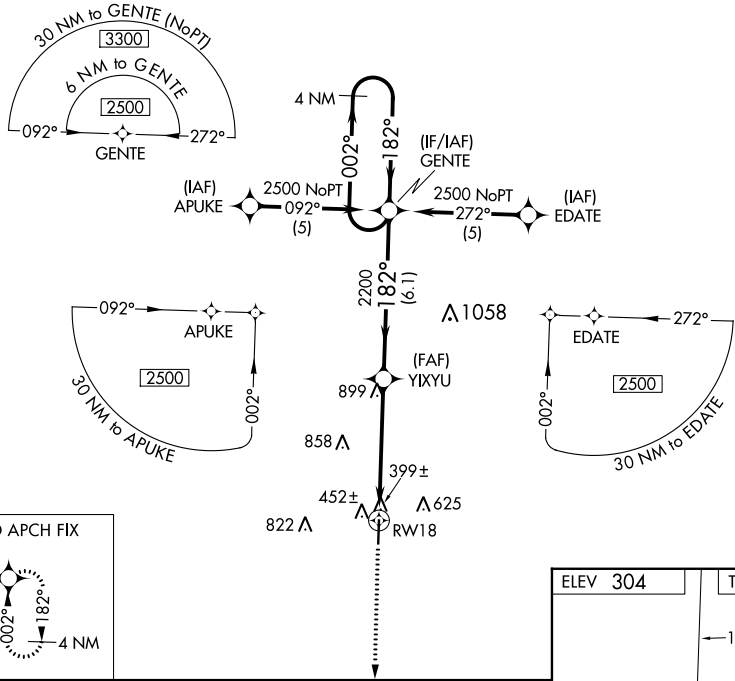
WAAS CH 62808 W18A	APP CRS 182°	Rwy Idg TDZE Apt Elev	5000 304 304
--	------------------------	-----------------------------	---

RNAV (GPS) RWY 18

DEXTER MUNI (DXE)

RNP APCH.	<p>MISSED APPROACH: Climb to 2500 direct GADLE and hold.</p>
<p>▼ Baro-VNAV NA. Use Poplar Bluff altimeter setting, when not received use Cape Girardeau Rgnl altimeter setting and increase all DA 33 feet and LPV visibilities ¼ mile all Cats and increase all MDA 40 feet. Rwy 18 helicopter visibility reduction below ¾ SM NA.</p>	

POF ASOS 124.225	MEMPHIS CENTER 133.65 292.15	UNICOM 122.7 (CTAF) 0
----------------------------	--	---------------------------------



CATEGORY	A	B	C	D
LPV DA	724-1¼	420 (500-1¼)		NA
LNAY/VNAV DA	854-1¾	550 (600-1¾)		NA
LNAY MDA	1200-1¼	896 (900-1¼)	1200-2¾ 896 (900-2¾)	NA

NC-3, 22 FEB 2024 to 21 MAR 2024

NC-3, 22 FEB 2024 to 21 MAR 2024

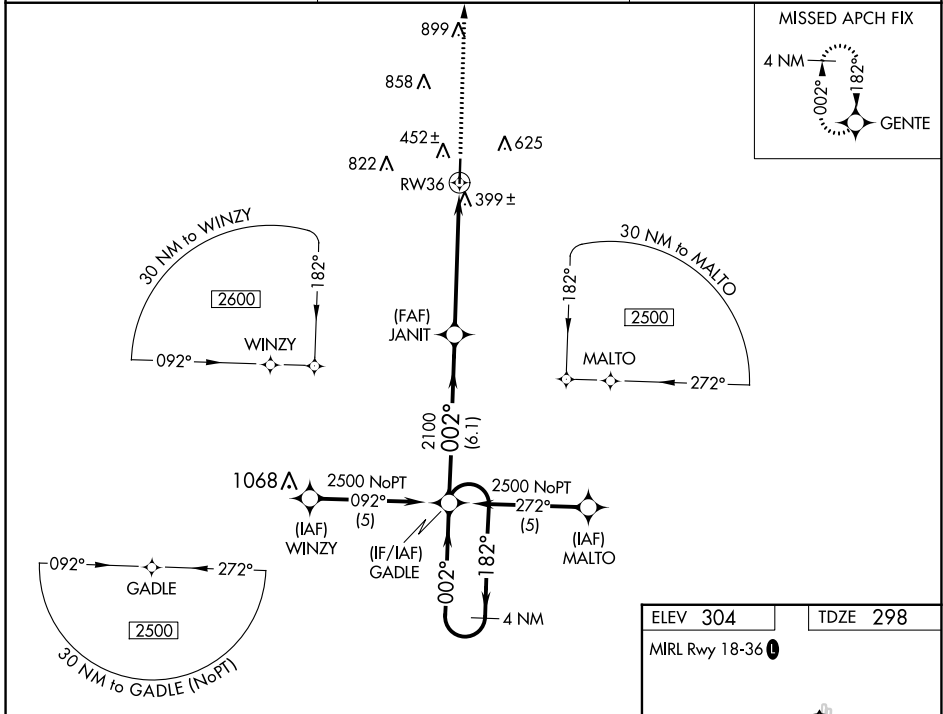
WAAS CH 50507 W36A	APP CRS 002°	Rwy Idg TDZE Apt Elev	5000 298 304
--	------------------------	-----------------------------	---

RNAV (GPS) RWY 36

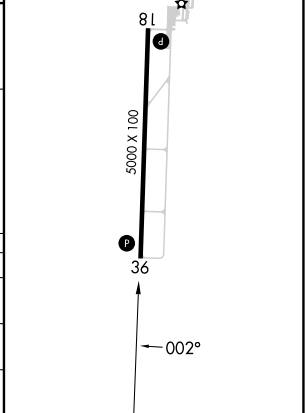
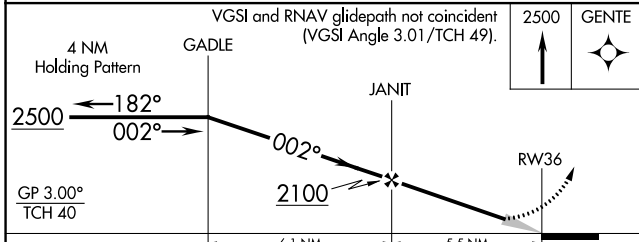
DEXTER MUNI (DXE)

RNP APCH.	<p>Baro-VNAV NA. Use Poplar Bluff altimeter setting, when not received use Cape Girardeau Rgnl altimeter setting and increase all DA 33 feet and all MDA 40 feet; increase LPV and LNAV/VNAV all Cats visibility ¼ SM, increase LNAV Cats C/D visibility ¼ SM.</p>	MISSED APPROACH: Climb to 2500 direct GENTE and hold.
-----------	--	---

POF ASOS 124.225	MEMPHIS CENTER 133.65 292.15	UNICOM 122.7 (CTAF) 0
----------------------------	--	---------------------------------



ELEV 304	TDZE 298
MIRL Rwy 18-36 0	



CATEGORY	A	B	C	D
LPV DA	595-1 297 (300-1)			
LNAV/VNAV DA	795-1¾ 497 (500-1¾)			
LNAV MDA	880-1 582 (600-1)	880-1½ 582 (600-1½)	880-1¾ 582 (600-1¾)	

NC-3, 22 FEB 2024 to 21 MAR 2024

NC-3, 22 FEB 2024 to 21 MAR 2024