

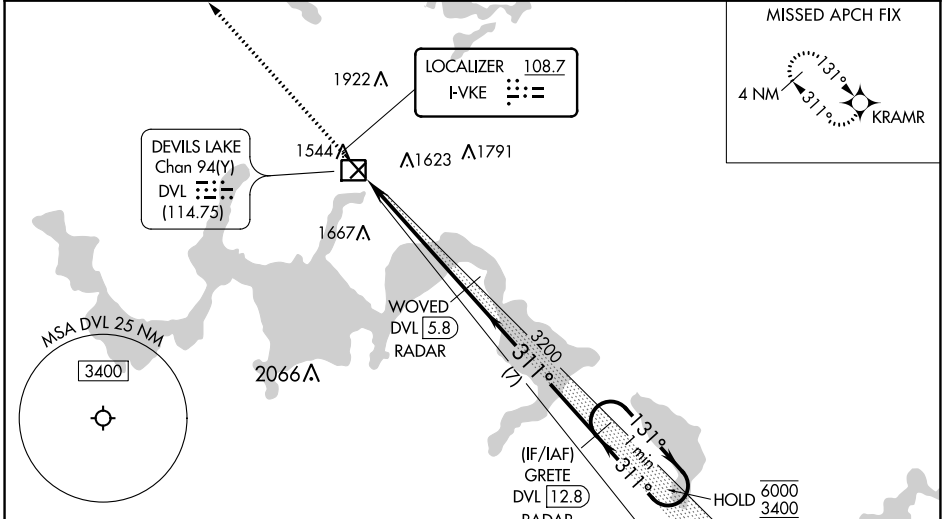
LOC I-VKE 108.7	APP CRS 311°	Rwy Idg TDZE Apt Elev	6400 1450 1469
---------------------------	------------------------	-----------------------------	---

ILS or LOC RWY 31

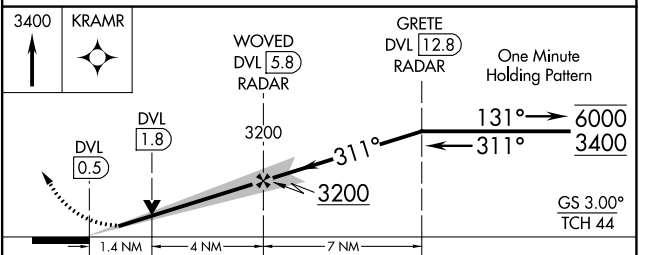
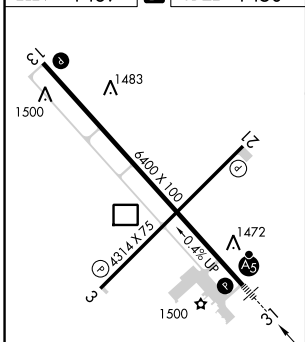
DEVILS LAKE RGNL (DVL)

RNP APCH - GPS.		MALSR 	MISSED APPROACH: Climb to 3400 direct KRAMR and hold.
DME or RADAR required.			
<p>NA VDP NA when using Cando altimeter setting. When local altimeter setting not received, use Cando altimeter setting and increase S-ILS 31 DA to 1711 feet; increase all MDAs 80 feet and S-LOC 31 visibility Cat C/D 1/2 SM, and Circling visibility Cat C/D 1/4 SM. DME from DVL DME. DME use requires simultaneous reception of I-VKE and DVL DME. For inop ALS when using Cando altimeter setting, increase S-ILS 31 all Cats visibility to 3/8 SM. For inop ALS, increase S-LOC 31 Cat C/D visibility to 1 3/8 SM.</p>			

AWOS-3PT 125.875	MINNEAPOLIS CENTER 124.2 270.3	UNICOM 122.8 (CTAF)
----------------------------	--	-------------------------------



ELEV 1469	D	TDZE 1450
------------------	----------	------------------



FAF to MAP 5.4 NM					
Knots	60	90	120	150	180
Min:Sec	5:24	3:36	2:42	2:10	1:48
C CIRCLING	2000-1 531 (600-1)		2240-2 1/4 771 (800-2 1/4)		2240-2 1/2 771 (800-2 1/2)

NC-1, 22 FEB 2024 to 21 MAR 2024

NC-1, 22 FEB 2024 to 21 MAR 2024

WAAS CH 78314 W13A	APP CRS 131°	Rwy ldg 6400 TDZE 1470 Apt Elev 1470
--	------------------------	---

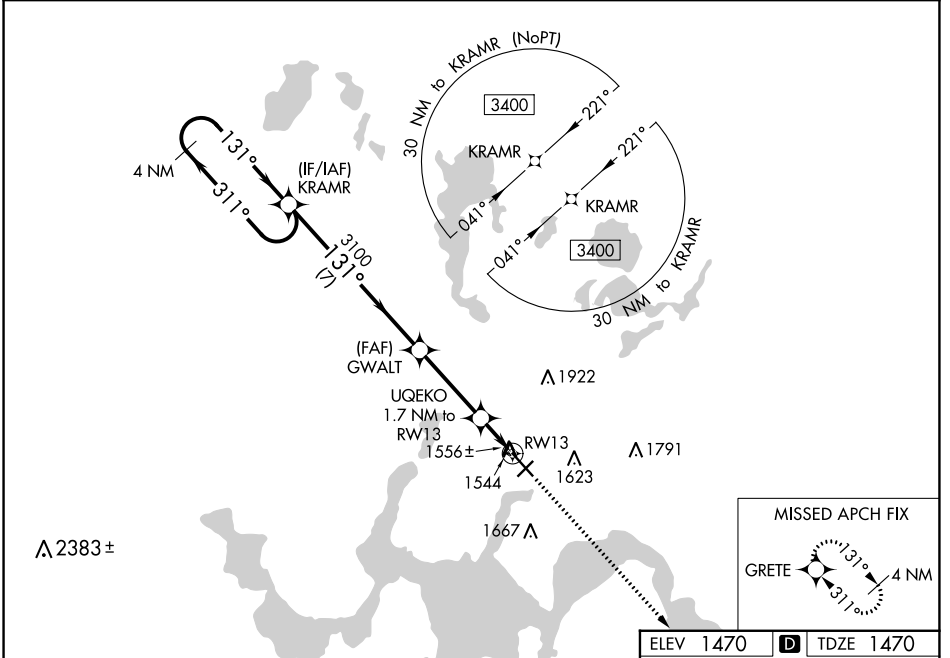
RNAV (GPS) RWY 13

DEVILS LAKE RGNL (DVL)

⚠ For uncompensated Baro-VNAV systems, LNAV/VNAV NA below -17°C (2°F) or above 54°C (130°F). DME/DME RNP-0.3 NA. Baro-VNAV and VDP NA when using Cando altimeter setting. When local altimeter setting not received, use Cando altimeter setting and increase all DA 63 feet and all MDA 80 feet, increase LPV and LNAV/VNAV all. Cats visibility ¼ mile, LNAV and Circling Cats C and D visibility ½ mile.

MISSED APPROACH: Climb to 3400 direct GRETE and hold.

AWOS-3PT 125.875	MINNEAPOLIS CENTER 124.2 270.3	UNICOM 122.8 (CTAF)
----------------------------	--	-------------------------------



NC-1, 22 FEB 2024 to 21 MAR 2024

NC-1, 22 FEB 2024 to 21 MAR 2024

MI Holding Pattern 		VGS1 and RNAV glidepath not coincident (VGS1 Angle 3.00/TCH 45). GRETE 3400 *LNAV only. 		
GP 3.00° TCH 50 		*0.9 NM to RW13 RW13 		
CATEGORY	A	B	C	D
LPV DA		1720-¾	250 (300-¾)	
LNAV/VNAV DA		1791-1	321 (400-1)	
LNAV MDA		1820-1	350 (400-1)	
C CIRCLING	2000-1	530 (600-1)	2240-2¼ 770 (800-2¼)	2240-2½ 770 (800-2½)

HIRL Rwy 13-31
REIL Rws 3, 13, and 21
MIRL Rwy 3-21

WAAS CH 78417 W21A	APP CRS 218°	Rwy Idg TDZE 1449 Apt Elev 1470	4314
--	------------------------	---	-------------

RNAV (GPS) RWY 21

DEVILS LAKE RGNL (DVL)

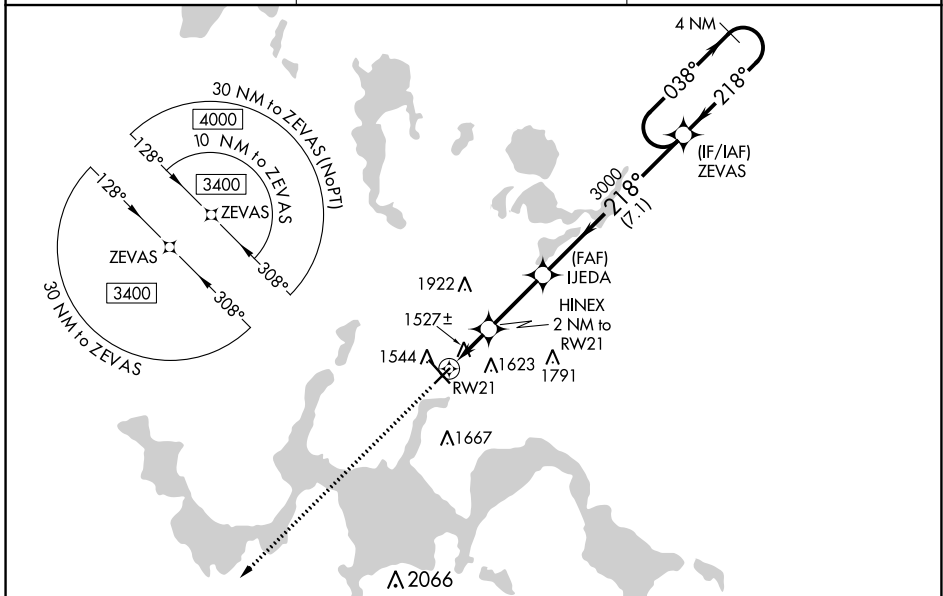
⚠ For uncompensated Baro-VNAV systems, LNAV/VNAV NA below -17°C (2°F) or above 54°C (130°F). DME/DME RNP-0.3 NA. Helicopter visibility reduction below ¾ SM NA. Baro-VNAV NA when using Cando altimeter setting. VDP NA with Cando altimeter setting. When local altimeter setting not received, use Cando altimeter setting and increase all DA 63 feet, and all MDA 80 feet, increase LNAV and Circling Cats C and D visibility ¼ mile.

MISSED APPROACH: Climb to 3400 direct ZIKID and hold.

AWOS-3PT
125.875

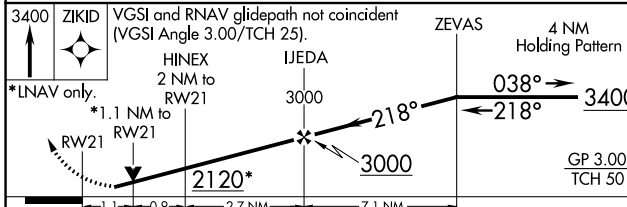
MINNEAPOLIS CENTER
124.2 270.3

UNICOM
122.8 (CTAF) ①

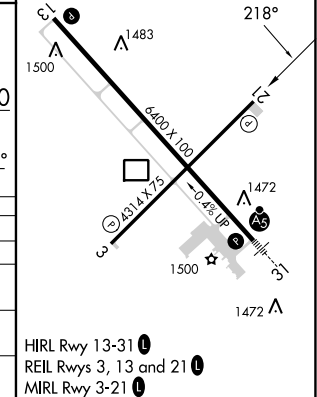


3400 ZIKID VGSI and RNAV glidepath not coincident (VGSI Angle 3.00/TCH 25).
 *LNAV only. HINEX 2 NM to RW21. IJEDA 3000. ZEVAS 4 NM Holding Pattern.
 RW21 2120*. 218°. 038°. 218°. 3400.
 GP 3.00° TCH 50.

ELEV 1470 **D** TDZE 1449



CATEGORY	A	B	C	D
LPV DA		1699-1	250 (300-1)	
LNAV/VNAV DA		1699-1	250 (300-1)	
LNAV MDA		1800-1	351 (400-1)	
C CIRCLING	2000-1	530 (600-1)	2240-2¼ 770 (800-2¼)	2240-2½ 770 (800-2½)



HIRL Rwy 13-31 **①**
 REIL Rwy 3, 13 and 21 **①**
 MIRL Rwy 3-21 **①**

NC-1, 22 FEB 2024 to 21 MAR 2024

NC-1, 22 FEB 2024 to 21 MAR 2024

WAAS CH 93608 W03A	APP CRS 038°	Rwy Idg TDZE 1450 Apt Elev 1470	4314
--	------------------------	---	-------------

RNAV (GPS) RWY 3

DEVILS LAKE RGNL (DVL)

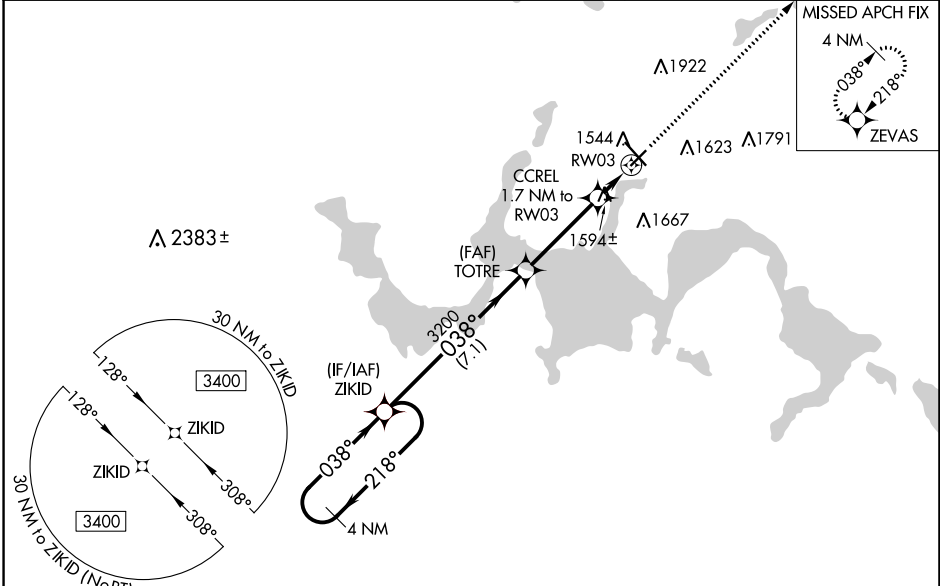
⚠ For uncompensated Baro-VNAV systems, LNAV/VNAV NA below -17°C (2°F) or above 54°C (130°F). DME/DME RNP-0.3 NA. When local altimeter setting not received, use Cando altimeter setting and increase all DA 63 feet, and all MDA 80 feet, increase LNAV/VNAV all Cats visibility 1/8 mile, LNAV and Circling Cat C and D visibility 1/4 mile. Helicopter visibility reduction below 3/8 SM NA. Baro-VNAV NA when using Cando altimeter setting.

MISSED APPROACH: Climb to 3400 direct ZEVAS and hold.

AWOS-3PT
125.875

MINNEAPOLIS CENTER
124.2 270.3

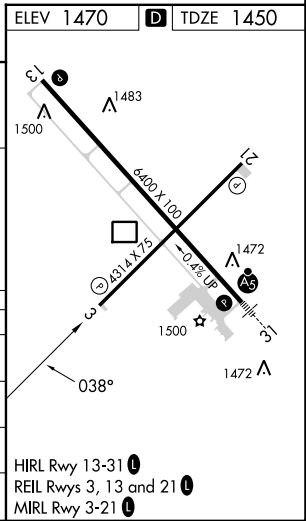
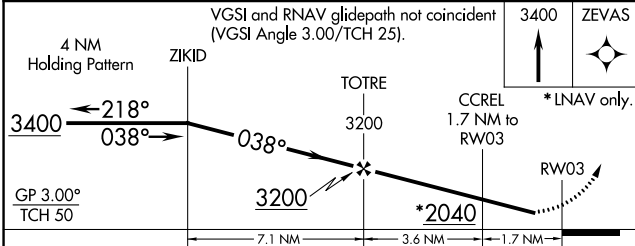
UNICOM
122.8 (CTAF)



NC-1, 22 FEB 2024 to 21 MAR 2024

NC-1, 22 FEB 2024 to 21 MAR 2024

ELEV 1470 **D** TDZE 1450



CATEGORY	A	B	C	D
LPV DA	1700-1		250 (300-1)	
LNAV/VNAV DA	1714-1		264 (300-1)	
LNAV MDA	1860-1 410 (400-1)		1860-1 1/8 410 (400-1 1/8)	
C CIRCLING	2000-1 530 (600-1)		2240-2 1/4 770 (800-2 1/4) 2240-2 1/2 770 (800-2 1/2)	

HIRL Rwy 13-31 **Ⓛ**
REIL Rwys 3, 13 and 21 **Ⓛ**
MIRL Rwy 3-21 **Ⓛ**

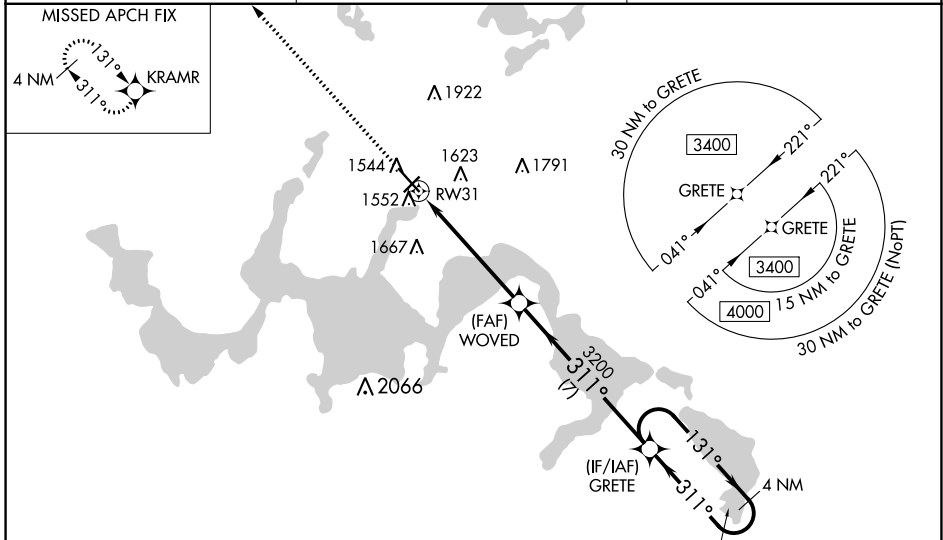
WAAS CH 58314 W31A	APP CRS 311°	Rwy ldg 6400 TDZE 1450 Apt Elev 1469
--	------------------------	---

RNAV (GPS) RWY 31

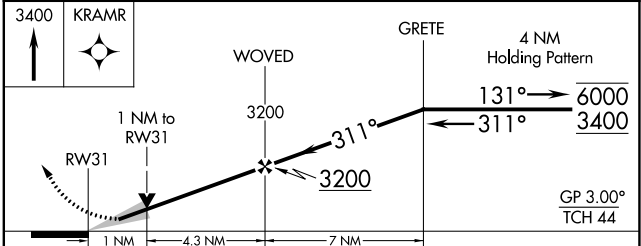
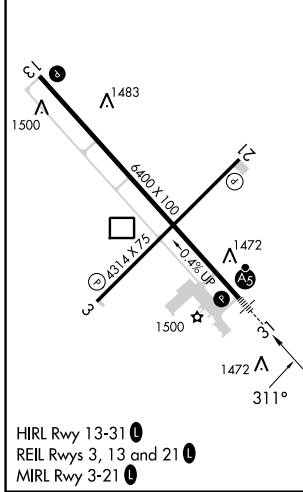
DEVILS LAKE RGNL (DVL)

RNP APCH - GPS.	MALSR	MISSED APPROACH: Climb to 3400 direct KRAMR and hold.
<p>⚠ For uncompensated Baro-VNAV systems, LNAV/VNAV NA below -17°C or above 54°C. Baro-VNAV and VDP NA when using Cando altimeter setting. For inop ALS, increase LNAV/VNAV all Cats visibility to 7/8 SM, LNAV Cats C/D visibility to 1 SM. When local altimeter setting not received, use Cando altimeter setting and increase LPV DA 1711 feet, LNAV/VNAV DA to 1782 feet; increase all MDAs 80 feet and LNAV visibility Cat C/D 1/4 SM, and Circling visibility Cat C/D 1/4 SM. For inop ALS when using Cando altimeter setting, increase LPV all Cats visibility to 7/8 SM.</p>		

AWOS-3PT 125.875	MINNEAPOLIS CENTER 124.2 270.3	UNICOM 122.8 (CTAF) 0
----------------------------	--	---------------------------------



ELEV 1469	D	TDZE 1450
------------------	----------	------------------



CATEGORY	A	B	C	D
LPV DA		1650-1/2	200 (200-1/2)	
LNAV/VNAV DA		1721-1/2	271 (300-1/2)	
LNAV MDA	1820-1/2	370 (400-1/2)	1820-5/8	370 (400-5/8)
C CIRCLING	2000-1	531 (600-1)	2240-2 1/4 771 (800-2 1/4)	2240-2 1/2 771 (800-2 1/2)

NC-1, 22 FEB 2024 to 21 MAR 2024

NC-1, 22 FEB 2024 to 21 MAR 2024