

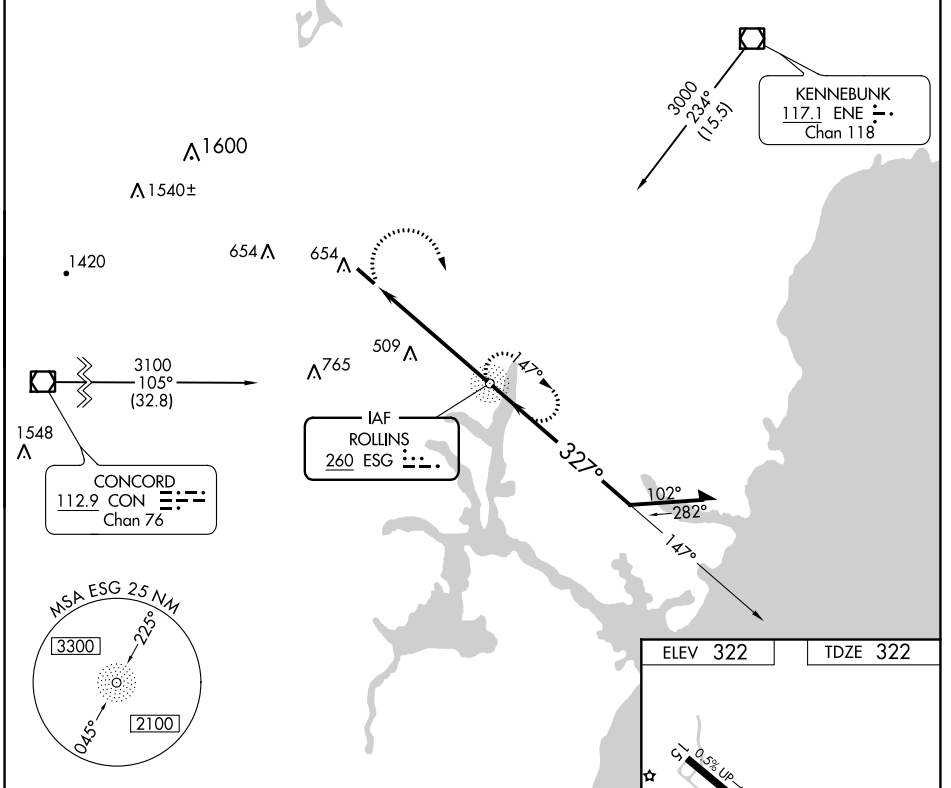
NDB ESG	APP CRS	Rwy Idg	4201
260	327°	TDZE	322
		Apt Elev	322

NDB RWY 33

SKYHAVEN (D.A.W)

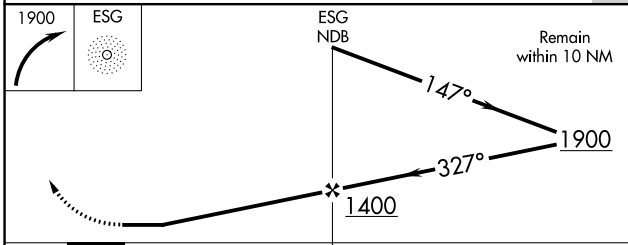
	ODALS	MISSED APPROACH: Climbing right turn to 1900 direct ESG NDB and hold.

ASOS 135.275	BOSTON APP CON 125.05 269.4	UNICOM 122.7 (CTAF)
------------------------	---------------------------------------	-------------------------------



NE-1, 22 FEB 2024 to 21 MAR 2024

NE-1, 22 FEB 2024 to 21 MAR 2024



CATEGORY	A	B	C	D
S-33	860-1	538 (600-1)	860-1½ 538 (600-1½)	NA
CIRCLING	1020-1	698 (700-1)	1020-2 698 (700-2)	NA

ELEV 322	TDZE 322
----------	----------

REIL Rwy 15

MIRL Rwy 15-33

FAF to MAP 5.5 NM

Knots	60	90	120	150	180
Min:Sec	5:30	3:40	2:45	2:12	1:50

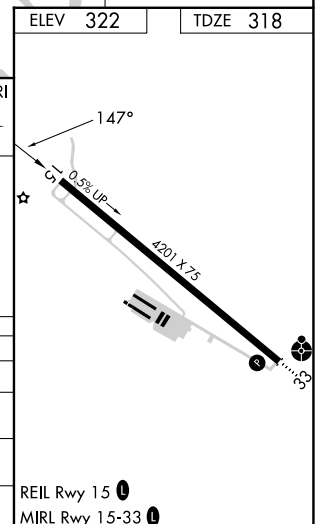
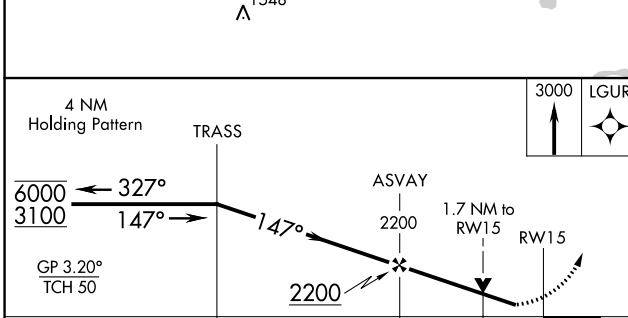
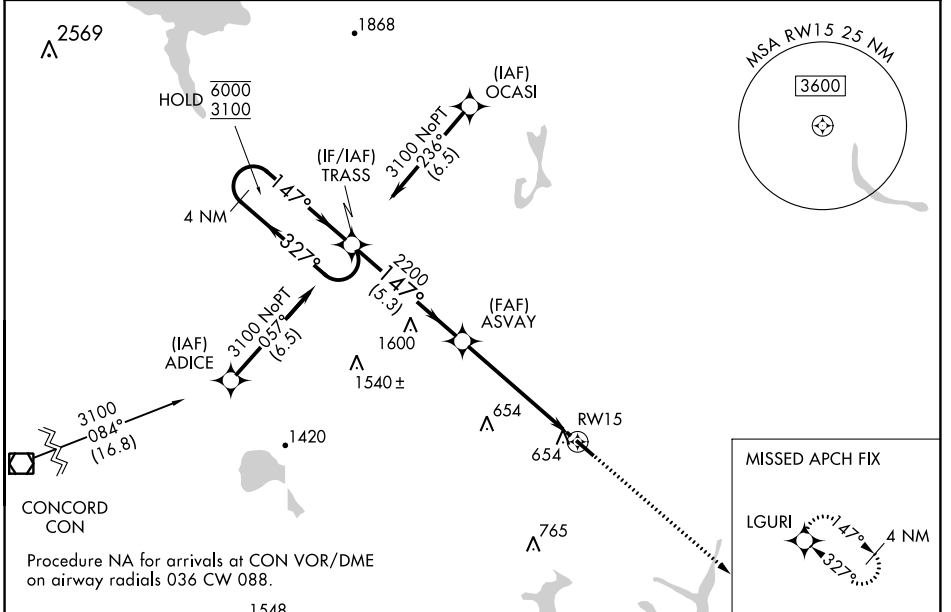
WAAS CH 87044 W15A	APP CRS 147°	Rwy Idg TDZE Apt Elev	4201 318 322
--	------------------------	-----------------------------	---

RNAV (GPS) RWY 15

SKYHAVEN (DAW)

RNP APCH - GPS.	MISSED APPROACH: Climb to 3000 direct LGURI and hold, continue climb-in-hold to 3000.
<p>▼ Rwy 15 helicopter visibility reduction below 3/4 SM NA.</p> <p>▲ For uncompensated Baro-VNAV systems, LNAV/VNAV NA below -20°C or above 54°C.</p>	

ASOS 135,275	BOSTON APP CON 125,05 269.4	UNICOM 122.7 (CTAF) 0
------------------------	---------------------------------------	---------------------------------



CATEGORY	A	B	C	D
LPV DA	620-7/8	302 (300-7/8)		NA
LNAV/VNAV DA	804-13/8	486 (500-13/8)		NA
LNAV MDA	920-1	602 (600-1)	920-13/4 602 (600-13/4)	NA
CIRCLING	960-1	638 (700-1)	960-13/4 638 (700-13/4)	NA

NE-1, 22 FEB 2024 to 21 MAR 2024

NE-1, 22 FEB 2024 to 21 MAR 2024

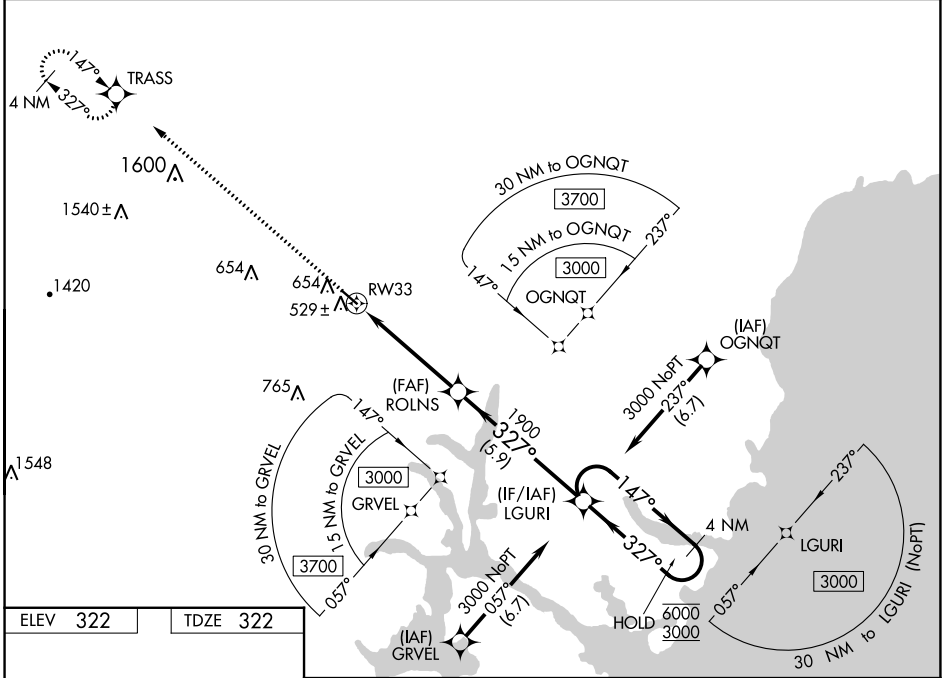
WAAS CH 72715 W33A	APP CRS 327°	Rwy Idg TDZE Apt Elev	4201 322 322
--	------------------------	-----------------------------	---

RNAV (GPS) RWY 33

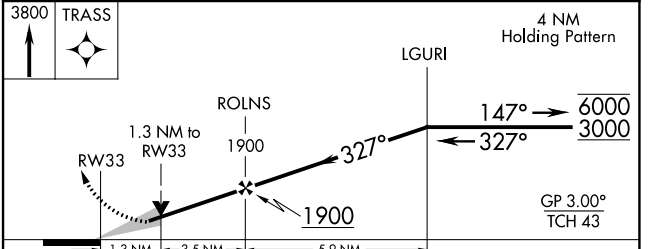
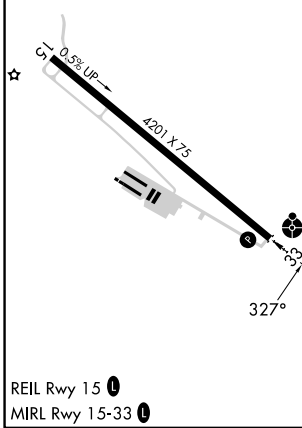
SKYHAVEN (DAW)

RNP APCH - GPS	ODALS	MISSED APPROACH: Climb to 3800 direct TRASS and hold, continue climb-in-hold to 3800.
<p>▼ Inop table does not apply to LPV and LNAV/VNAV all Cats. ▲ For uncompensated Baro-VNAV systems, LNAV/VNAV NA below -20°C or above 54°C. For inop ALS, increase LNAV visibility Cat C to 1½ SM.</p>		

ASOS 135.275	BOSTON APP CON 125.05 269.4	UNICOM 122.7 (CTAF) 0
------------------------	---------------------------------------	--



ELEV 322	TDZE 322
----------	----------



CATEGORY	A	B	C	D
LPV DA	572-¾		250 (300-¾)	NA
LNAV/VNAV DA	699-1		377 (400-1)	NA
LNAV MDA	780-¾	458 (500-¾)	780-1½ 458 (500-1½)	NA
CIRCLING	960-1	638 (700-1)	960-1¾ 638 (700-1¾)	NA

NE-1, 22 FEB 2024 to 21 MAR 2024

NE-1, 22 FEB 2024 to 21 MAR 2024