

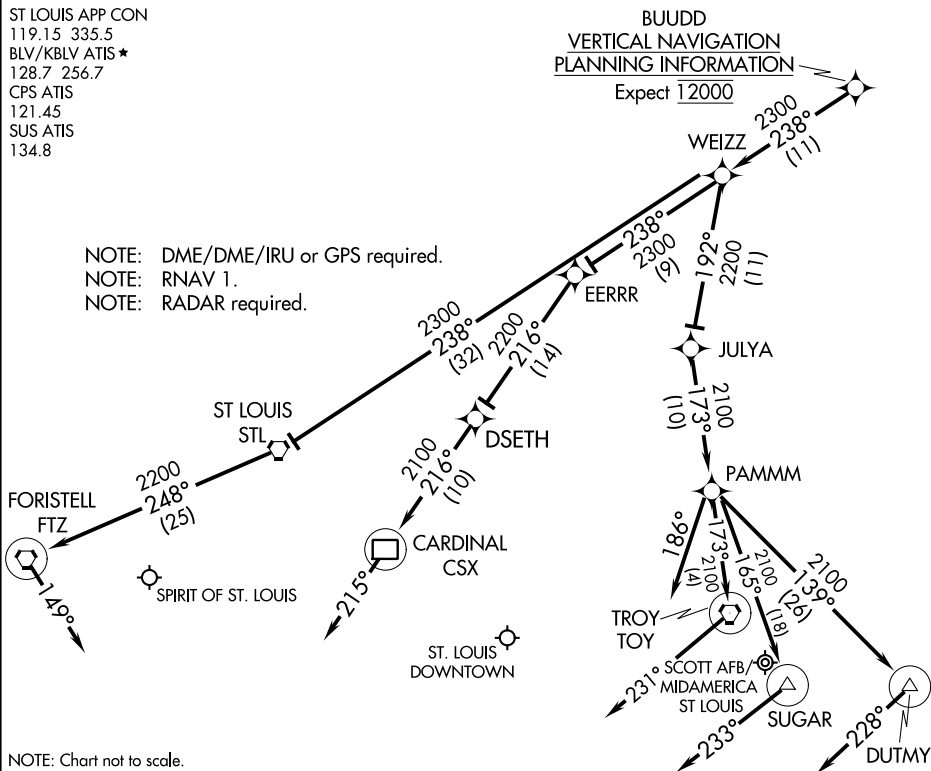
BUDD THREE ARRIVAL (RNAV)

ST LOUIS APP CON
 119.15 335.5
 BLV/KBLV ATIS ★
 128.7 256.7
 CPS ATIS
 121.45
 SUS ATIS
 134.8

BUDD
 VERTICAL NAVIGATION
 PLANNING INFORMATION

Expect 12000

- NOTE: DME/DME/IRU or GPS required.
- NOTE: RNAV 1.
- NOTE: RADAR required.



NOTE: Chart not to scale.

ARRIVAL ROUTE DESCRIPTION

SPIRIT OF ST. LOUIS:

LANDING RUNWAYS 8L/R: From BUDD on track 238° to WEIZZ, then on track 238° to STL VORTAC, then on track 248° to FTZ VORTAC. Expect RADAR vectors prior to FTZ VORTAC, if no heading received, track 149°.

LANDING RUNWAYS 26L/R: From BUDD on track 238° to WEIZZ, then on track 238° to EERRR, then on track 216° to DSETH, then on track 216° to CSX DME. Expect RADAR vectors prior to CSX DME, if no heading received, track 215°.

ST. LOUIS DOWNTOWN:

LANDING RUNWAY 12R: From BUDD on track 238° to WEIZZ, then on track 192° to JULYA, then on track 173° to PAMMM. Expect RADAR vectors prior to PAMMM, if no heading received, track 186°.

LANDING RUNWAYS 30L/R: From BUDD on track 238° to WEIZZ, then on track 192° to JULYA, then on track 173° to PAMMM, then on track 165° to SUGAR. Expect RADAR vectors prior to SUGAR, if no heading received, track 233°.

SCOTT AFB/MIDAMERICA ST LOUIS:

LANDING RUNWAYS 14L/R: From BUDD on track 238° to WEIZZ, then on track 192° to JULYA, then on track 173° to PAMMM, then on track 173° to TOY VORTAC. Expect RADAR vectors prior to TOY VORTAC, if no heading received, track 231°.

LANDING RUNWAYS 32L/R: From BUDD on track 238° to WEIZZ, then on track 192° to JULYA, then on track 173° to PAMMM, then on track 139° to DUTMY. Expect RADAR vectors prior to DUTMY, if no heading received, track 228°.

BUDD THREE ARRIVAL (RNAV)

EC-3, 22 FEB 2024 to 21 MAR 2024

EC-3, 22 FEB 2024 to 21 MAR 2024

DELMA FOUR ARRIVAL (RNAV)

AL-46 (FAA)

BELLEVILLE, ILLINOIS

ST LOUIS APP CON

128.1 307.05

ALN ATIS

128.0

BLV/KBLV ATIS *

128.7 256.7

CPS ATIS

121.45

SUS ATIS

134.8

ST. LOUIS RGNL

CARDINAL CSX

039°

SPIRIT OF ST. LOUIS

349°

DERDF

3000
347°
(151)

3000
039°
(34)

EMKAA

349°

FOSKU

080°

ST. LOUIS DOWNTOWN

SCOTT AFB/
MIDAMERICA ST LOUIS

3000
051°
(27)

3000
051°
(26)

3000
084°
(29)

084°

085°
3000
(10)

HOLLT

MMRSN

3000
026°
(11)

DELMA
VERTICAL NAVIGATION
PLANNING INFORMATION

Expect 13000

NOTE: DME/DME/IRU or GPS required.

NOTE: RNAV 1.

NOTE: RADAR required.

NOTE: Chart not to scale.

ARRIVAL ROUTE DESCRIPTION

SPIRIT OF ST. LOUIS:

LANDING RUNWAYS 8L/R: From DELMA on track 026° to MMRSN, then on track 347° to DERDF. Expect RADAR vectors to final approach. If no heading received, track 349°.

LANDING RUNWAYS 26L/R: From DELMA on track 026° to MMRSN, then on track 051° to EMKAA. Expect RADAR vectors to final approach. If no heading received, track 349°.

ST. LOUIS DOWNTOWN:

LANDING RUNWAY 12R: From DELMA on track 026° to MMRSN, then on track 051° to FOSKU. Expect RADAR vectors to final approach. If no heading received, track 080°.

LANDING RUNWAYS 30L/R: From DELMA on track 026° to MMRSN, then on track 084° to ESSAR, then on track 085° to HOLLT. Expect RADAR vectors to final approach. If no heading received, track 033°.

SCOTT AFB/MIDAMERICA ST LOUIS:

LANDING RUNWAYS 14L/R, 32L/R: From DELMA on track 026° to MMRSN, then on track 084° to ESSAR. Expect RADAR vectors to final approach. If no heading received, track 084°.

ST. LOUIS RGNL:

LANDING RUNWAYS 11, 17, 29, 35: From DELMA on track 026° to MMRSN, then on track 039° to CSX DME. Expect RADAR vectors to final approach course. If no heading received, track 039°.

DELMA FOUR ARRIVAL (RNAV)

BELLEVILLE, ILLINOIS

EC-3, 22 FEB 2024 to 21 MAR 2024

EC-3, 22 FEB 2024 to 21 MAR 2024

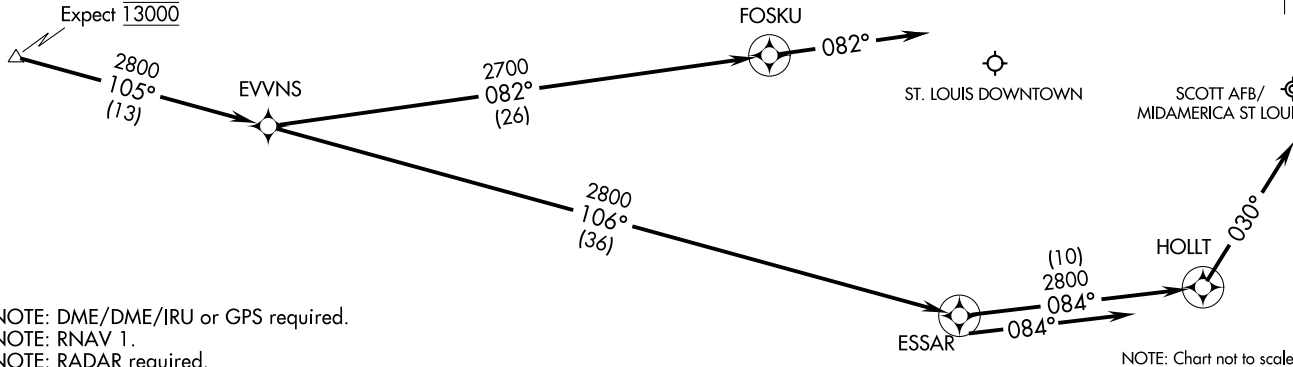
DIXEE THREE ARRIVAL (RNAV)
 (DIXEE: DIXEE3) 02MAR17

(DIXEE: DIXEE3) 23054
 DIXEE THREE ARRIVAL (RNAV)
 AL-46 (FAA)

ST LOUIS APP CON
 128.1 307.05
 BLV/KBLV ATIS ★
 128.7 256.7
 CPS ATIS
 121.45

**DIXEE
VERTICAL NAVIGATION
PLANNING INFORMATION**

Expect 13000



NOTE: DME/DME/IRU or GPS required.
 NOTE: RNAV 1.
 NOTE: RADAR required.

NOTE: Chart not to scale.

ARRIVAL ROUTE DESCRIPTION

ST. LOUIS DOWNTOWN:

LANDING RWY 12R: From DIXEE on track 105° to EVVNS, then on track 082° to FOSKU. Expect radar vector prior to FOSKU. If no heading received, track 082°.

LANDING RWY 30L/R: From DIXEE on track 105° to EVVNS, then on track 106° to ESSAR, then on track 084° to HOLLT. Expect radar vector prior to HOLLT. If no heading received, track 030°.

SCOTT AFB/MIDAMERICA ST LOUIS:

LANDING RWYS 14L/R, 32L/R: From DIXEE on track 105° to EVVNS, then on track 106° to ESSAR. Expect radar vector prior to ESSAR. If no heading received, track 084°.

BELLEVILLE, ILLINOIS

BELLEVILLE, ILLINOIS

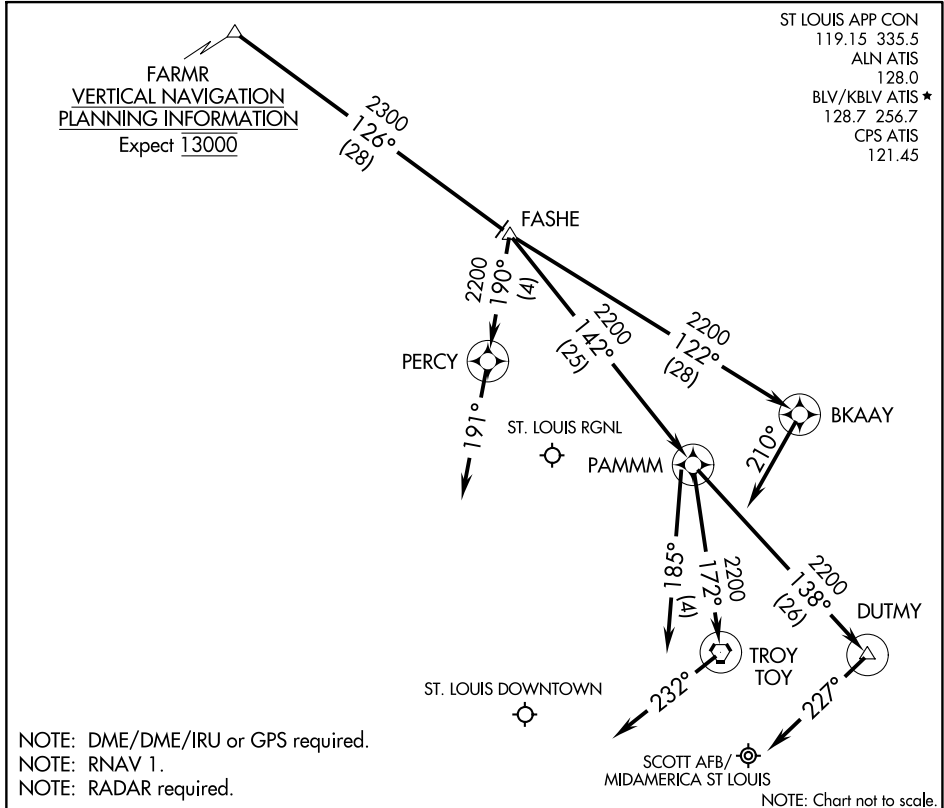
FARMR THREE ARRIVAL (RNAV)

AL-46 (FAA)

BELLEVILLE, ILLINOIS

FARMR
VERTICAL NAVIGATION
PLANNING INFORMATION
Expect 13000

ST LOUIS APP CON
119.15 335.5
ALN ATIS
128.0
BLV/KBLV ATIS ★
128.7 256.7
CPS ATIS
121.45



NOTE: DME/DME/IRU or GPS required.
NOTE: RNAV 1.
NOTE: RADAR required.

NOTE: Chart not to scale.

ARRIVAL DESCRIPTION

ST. LOUIS DOWNTOWN:

LANDING RWY 12R, 30L/R: From FARMR on track 126° to FASHE, then on track 142° to PAMMM. Expect radar vector prior to PAMMM. If no heading received, track 185°.

SCOTT AFB/MIDAMERICA ST LOUIS:

LANDING RWYS 14L/R: From FARMR on track 126° to FASHE, then on track 142° to PAMMM, then on track 172° to TOY VORTAC. Expect RADAR vector prior to TOY VORTAC. If no heading received, track 232°.

LANDING RWYS 32L/R: From FARMR on track 126° to FASHE, then on track 142° to PAMMM, then on track 138° to DUTMY. Expect radar vector prior to DUTMY. If no heading received, track 227°.

ST. LOUIS RGNL:

LANDING RWY 11: From FARMR on track 126° to FASHE, then on track 190° to PERCY. Expect radar vector prior to PERCY. If no heading received, track 191°.

LANDING RWY 29: From FARMR on track 126° to FASHE, then on track 122° to BKAAY. Expect radar vector prior to BKAAY. If no heading received, track 210°.

FARMR THREE ARRIVAL (RNAV)

BELLEVILLE, ILLINOIS