


(ALCOS6.ALCOS) 18032  
**ALCOS SIX DEPARTURE**

SL-72 (FAA)

CASPER/NATRONA COUNTY INTL (CPR)  
 CASPER, WYOMING

ATIS  
 126.15  
 CLNC DEL  
 121.9 257.8  
 GND CON  
 121.9  
 CASPER TOWER ★  
 118.3 (CTAF) 257.8  
 CASPER DEP CON ★  
 120.65 354.1  
 DENVER CENTER  
 135.6 363.025

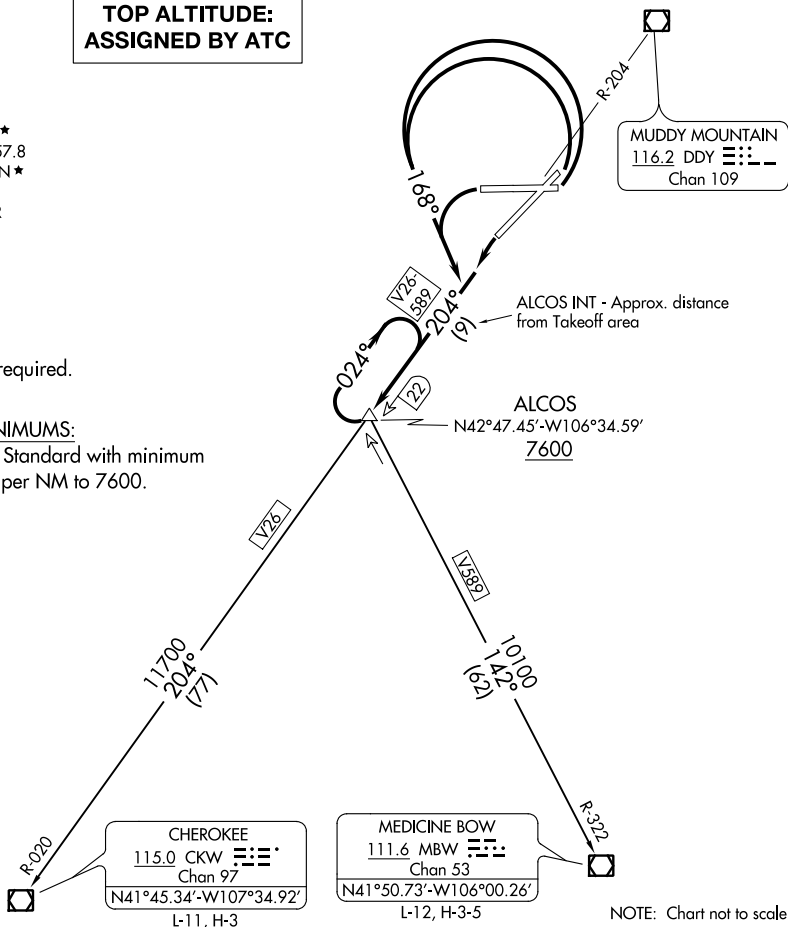
**TOP ALTITUDE:  
 ASSIGNED BY ATC**

MUDDY MOUNTAIN  
 116.2 DDY   
 Chan 109

NOTE: DME required.

**TAKEOFF MINIMUMS:**

All Runways: Standard with minimum  
 climb of 300' per NM to 7600.



NW-1, 07 NOV 2019 to 05 DEC 2019

NW-1, 07 NOV 2019 to 05 DEC 2019

**DEPARTURE ROUTE DESCRIPTION**

TAKEOFF RUNWAYS 3, 8, 26: Turn left heading 168°, thence. . .

TAKEOFF RUNWAY 21: Turn left, thence. . .

. . . climb on DDY VOR/DME R-204 to cross ALCOS INT 22 DME at or above 7600,  
 climb-in-hold to MEA for direction of flight, then via (transition) or (assigned route).

CHEROKEE TRANSITION (ALCOS6.CKW): From over ALCOS on DDY R-204 and  
 CKW R-020 to CKW VOR/DME.

MEDICINE BOW TRANSITION (ALCOS6.MBW): From over ALCOS on MBW R-322 to  
 MBW VOR/DME.

**ALCOS SIX DEPARTURE**  
 (ALCOS6.ALCOS) 21JUL16

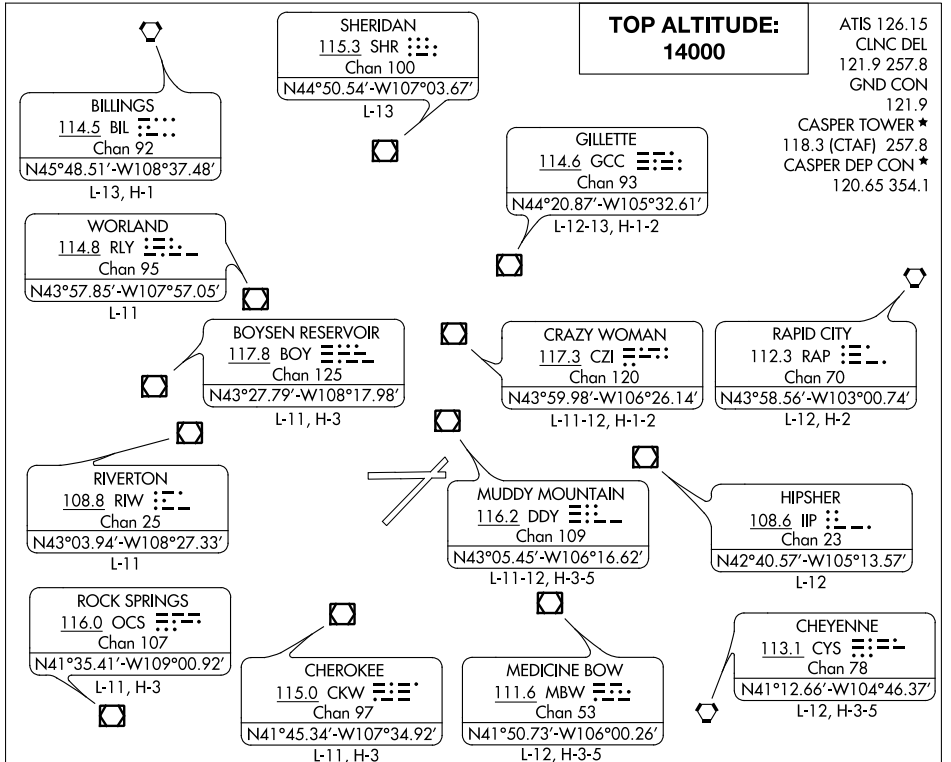
CASPER, WYOMING  
 CASPER/NATRONA COUNTY INTL (CPR)

# CASPER THREE DEPARTURE

SL-72 (FAA)

CASPER/NATRONA COUNTY INTL (CPR)

CASPER, WYOMING



### TAKE-OFF MINIMUMS

Rwy 12, 17, 30, 35, NA- Environmental.

Rwy 3, 8, 26, Standard.

Rwy 21, Standard with a minimum climb of 235 feet per NM to 6700.

NOTE: RADAR required.

NOTE: Chart not to scale.

### DEPARTURE ROUTE DESCRIPTION

**TAKE-OFF RUNWAY 3:** Climb on a heading between 212° CW 094° from DER as assigned by ATC thence . . .

**TAKE-OFF RUNWAY 8:** Climb on a heading between 257° CW 094° from DER as assigned by ATC thence . . .

**TAKE-OFF RUNWAY 21:** Climb on a heading between 195° CW 032° from DER as assigned by ATC thence . . .

**TAKE-OFF RUNWAY 26:** Climb on a heading between 190° CW 077° from DER as assigned by ATC thence . . .

. . . Maintain 14000' or assigned lower altitude. Expect RADAR vectors to filed/assigned fix/route. Expect further clearance to filed altitude ten minutes after departure.

### LOST COMMUNICATIONS

If no transmissions are received for one minute after departure, maintain assigned heading until 7,000 feet, then climb to filed altitude via direct DDD VOR/DME, then via assigned route. Runways 3 and 8 turn left to DDD VOR/DME, runways 21 and 26 turn right to DDD VOR/DME.

# CASPER THREE DEPARTURE