

LOC I-COE	APP CRS	Rwy Idg	7400
<b>110.7</b>	<b>051°</b>	TDZE	2290
		Apt Elev	2320

# ILS or LOC/DME RWY 6

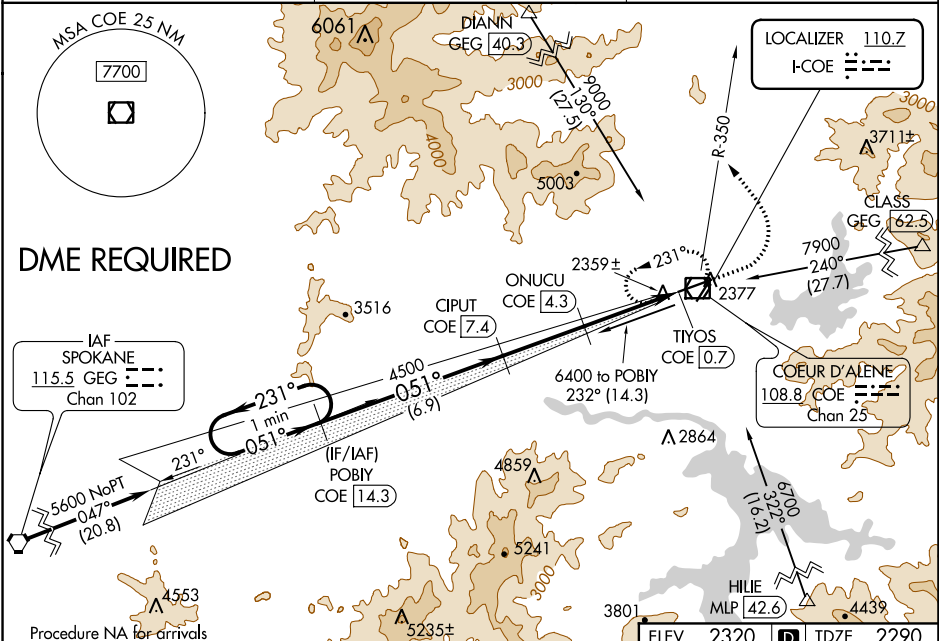
COEUR D'ALENE-PAPPY BOYINGTON FIELD (COE)

**⚠** DME from COE VOR/DME. Simultaneous reception of I-COE and COE DME required. Autopilot coupled approach NA below 2840. When local altimeter setting not received, use Spokane Intl altimeter setting and increase all DA/MDA 80 feet and all visibilities ¼ mile. Circling Rwy 2, NA at night.

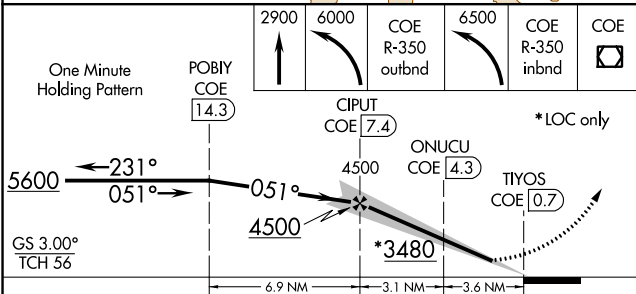


**MISSED APPROACH:** Climb to 2900 then climbing left turn to 6000 via COE R-350 outbound then climbing left turn to 6500 via COE R-350 inbound to COE VOR/DME and hold.

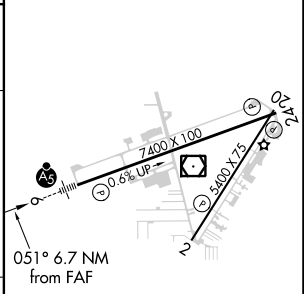
AWOS-3PT <b>135.075</b>	SPOKANE APP CON <b>132.1 263.0</b>	UNICOM <b>122.8 (CTAF)</b>
----------------------------	---------------------------------------	-------------------------------



ELEV 2320	TDZE 2290
-----------	-----------



2900	6000	COE R-350 outbnd	6500	COE R-350 inbnd	COE
------	------	------------------	------	-----------------	-----



CATEGORY	A	B	C	D
S-ILS 6	2490-1/2 200 (200-1/2)			
S-LOC 6	2860-1/2	570 (600-1/2)	2860-1 570 (600-1)	2860-1 1/2 570 (600-1 1/4)
CIRCLING	2860-1	540 (600-1)	2880-1 1/2 560 (600-1 1/2)	2880-2 560 (600-2)

MIRL Rwy 2-20

HIRL Rwy 6-24

REIL Rws 2 and 24


NW-1, 03 DEC 2020 to 31 DEC 2020

NW-1, 03 DEC 2020 to 31 DEC 2020

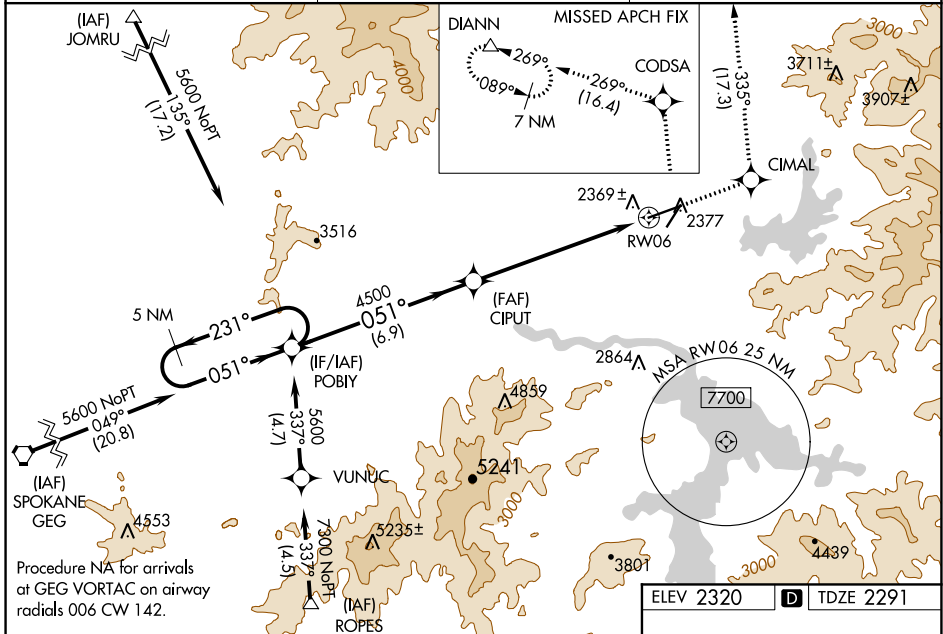
WAAS CH <b>70608</b> <b>W06A</b>	APP CRS <b>051°</b>	Rwy Idg <b>7400</b> TDZE <b>2291</b> Apt Elev <b>2320</b>
--	------------------------	---

# RNAV (GPS) RWY 6

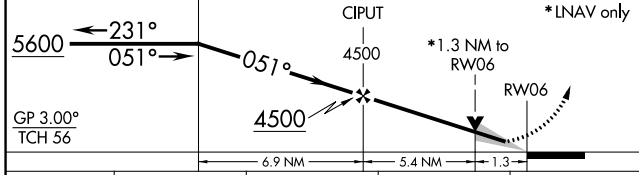
COEUR D'ALENE-PAPPY BOYINGTON FIELD (COE)

<p><b>⚠</b> For uncompensated Baro-VNAV systems, LNAV/VNAV NA below -21°C (-5°F) or above 53°C (127°F). DME/DME RNP-0.3 NA. When local altimeter setting not received, use Spokane Intl altimeter setting and increase all DA/MDA 80 feet. Increase LNAV/VNAV all Cats visibility ¼ mile, LNAV Cat C/D visibility ½ mile, and Circling Cat C visibility ¼ mile. Baro-VNAV and VDP NA when using Spokane Intl altimeter setting. Night landing: Rwy 2 NA.</p>	<p><b>MALSR</b></p>  <p><b>MISSED APPROACH:</b> Climb to 7000 direct CIMAL and on track 335° to CODSA and on track 269° to DIANN and hold.</p>
--	---

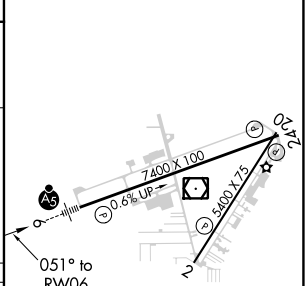
AWOS-3PT <b>135.075</b>	SPOKANE APP CON <b>132.1 263.0</b>	UNICOM <b>122.8 (CTAF)</b> <b>Ⓛ</b>
----------------------------	---------------------------------------	--



5 NM Holding Pattern POBIY	7000 ↑	CIMAL ✧	tr 335°	CODSA ✧	tr 269°	DIANN △
----------------------------------	-----------	------------	------------	------------	------------	------------



ELEV 2320	<b>D</b>	TDZE 2291
-----------	----------	-----------



CATEGORY	A	B	C	D
LPV DA	2491-½ 200 (200-½)			
LNAV/VNAV DA	2654-¾ 363 (400-¾)			
LNAV MDA	2740-½	449 (500-½)	2740-1	449 (500-1)
CIRCLING	2740-1 420 (500-1)	2860-1 540 (600-1)	2880-1½ 560 (600-1½)	2880-2 560 (600-2)

MIRL Rwy 2-20 **Ⓛ**  
HIRL Rwy 6-24 **Ⓛ**  
REIL Rws 2 and 24 **Ⓛ**

NW-1, 03 DEC 2020 to 31 DEC 2020

NW-1, 03 DEC 2020 to 31 DEC 2020