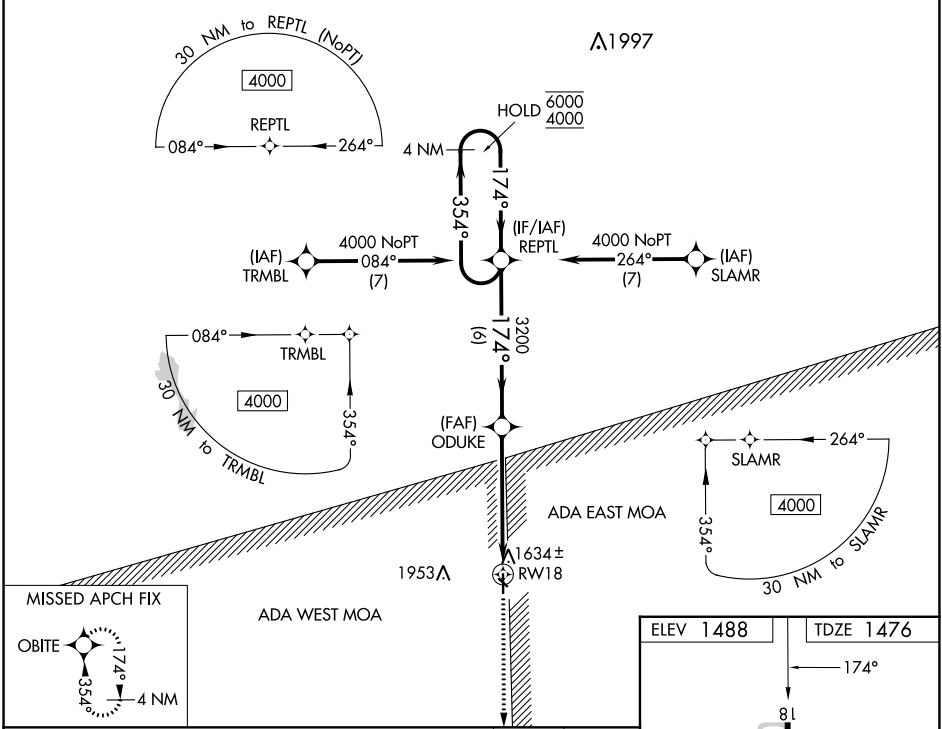


WAAS CH 69244 W18A	APP CRS 174°	Rwy Idg 4000 TDZE 1476 Apt Elev 1488
--	------------------------	---

RNAV (GPS) RWY 18

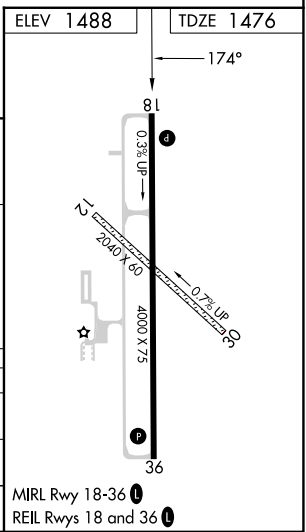
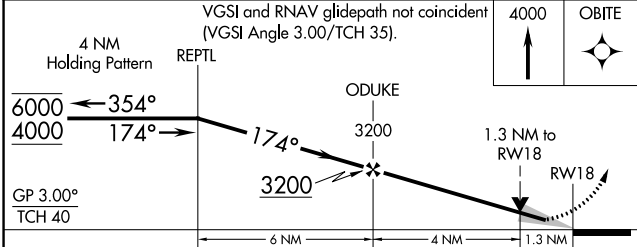
BLOSSER MUNI (CNK)

RNP APCH-GPS.		MISSED APPROACH: Climb to 4000 direct OBITE and hold.
<p>▽ Rwy 18 helicopter visibility reduction below 1 SM NA. For uncompensated Baro-VNAV systems, LNAV/VNAV NA below -20°C or above 54°C. ▲ Baro-VNAV and VDP NA when using Hebron Muni altimeter setting.</p>	<p>ASOS 123.825</p>	
<p>KANSAS CITY CENTER 134.9 363.2</p>		<p>UNICOM 122.8 (CTAF) 0</p>



NC-2, 22 FEB 2024 to 21 MAR 2024

NC-2, 22 FEB 2024 to 21 MAR 2024



CATEGORY	A	B	C	D
LPV DA	1738-1	262 (300-1)		NA
LNAV/VNAV DA	1776-1	300 (300-1)		NA
LNAV MDA	1920-1	444 (500-1)		NA

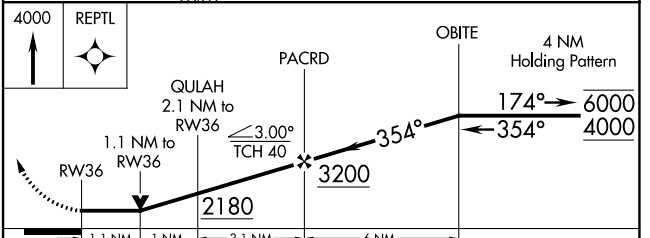
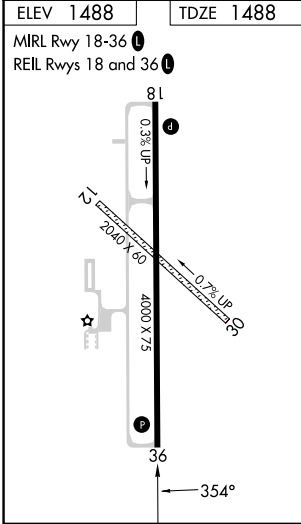
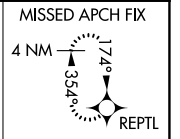
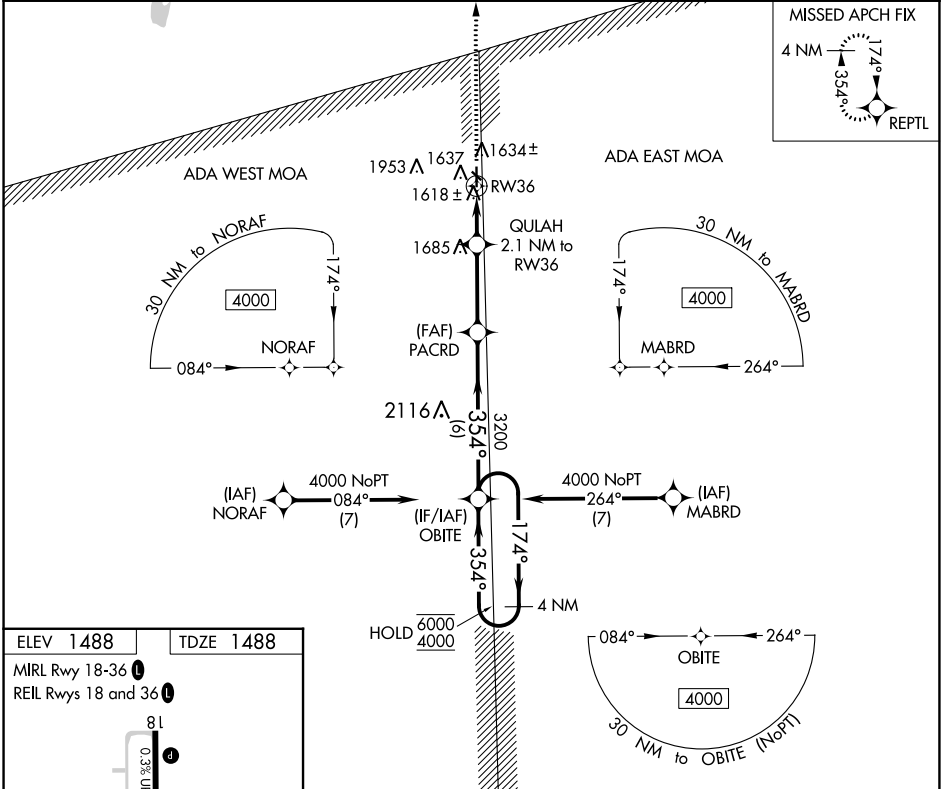
WAAS CH 72644 W36A	APP CRS 354°	Rwy Idg TDZE Apt Elev	4000 1488 1488
--	------------------------	-----------------------------	---

RNAV (GPS) RWY 36

BLOSSER MUNI (CNK)

RNP APCH-GPS.	MISSED APPROACH: Climb to 4000 direct REPTL and hold.
Rwy 36 helicopter visibility reduction below 1 SM NA.	

ASOS 123.825	KANSAS CITY CENTER 134.9 363.2	UNICOM 122.8 (CTAF)
------------------------	--	-------------------------------



CATEGORY	A	B	C	D
LP MDA	1880-1	392 (400-1)		NA
LNAV MDA	1940-1	452 (500-1)		NA

NC-2, 22 FEB 2024 to 21 MAR 2024

NC-2, 22 FEB 2024 to 21 MAR 2024