

APP CRS	Rwy Idg	<b>4001</b>
<b>178°</b>	TDZE	<b>1214</b>
	Apt Elev	<b>1226</b>

# RNAV (GPS) RWY 18

CHEROKEE COUNTY RGNL (CKP)

RNP APCH.

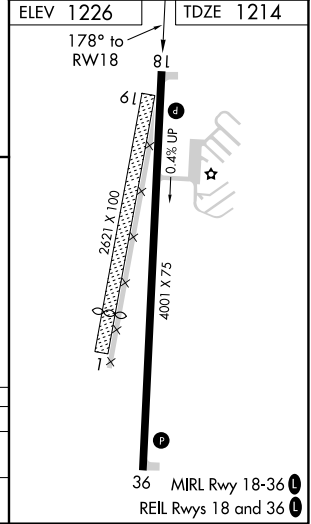
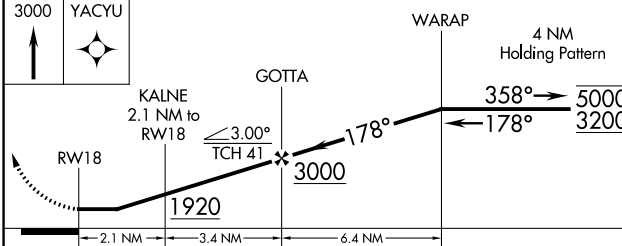
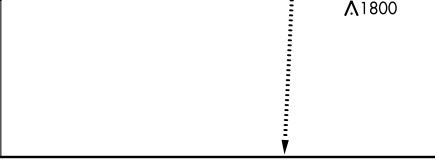
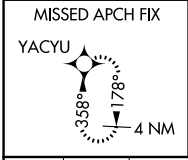
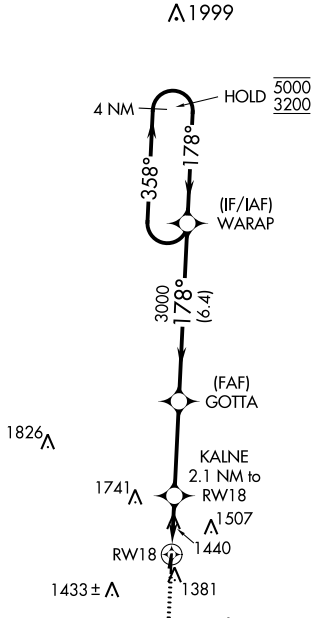
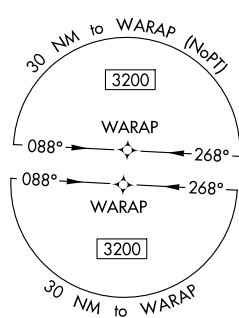
**▼** Circling NA to Rwys 1 and 19. Rwy 18 helicopter visibility reduction below 1 SM NA. Rwy 18 Straight-in and Circling NA at night.

MISSED APPROACH: Climb to 3000 direct YACYU and hold.

AWOS-3  
**119.225**

MINNEAPOLIS CENTER  
**125.025 235.625**

UNICOM  
**122.8 (CTAF) 0**



CATEGORY	A	B	C	D
LNVA MDA	1740-1	526 (600-1)	1740-1½	526 (600-1½)
<b>C</b> CIRCLING	1760-1 534 (600-1)	1820-1 594 (600-1)	2100-2½ 874 (900-2½)	2160-3 934 (1000-3)

NC-3, 22 FEB 2024 to 21 MAR 2024

NC-3, 22 FEB 2024 to 21 MAR 2024

36 MIRL Rwy 18-36  
REIL Rws 18 and 36

WAAS CH <b>73042</b> <b>W36A</b>	APP CRS <b>358°</b>	Rwy Idg TDZE Apt Elev	<b>4001</b> <b>1226</b> <b>1226</b>
--	------------------------	-----------------------------	---

# RNAV (GPS) RWY 36

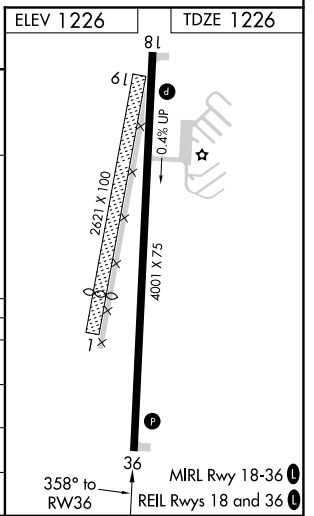
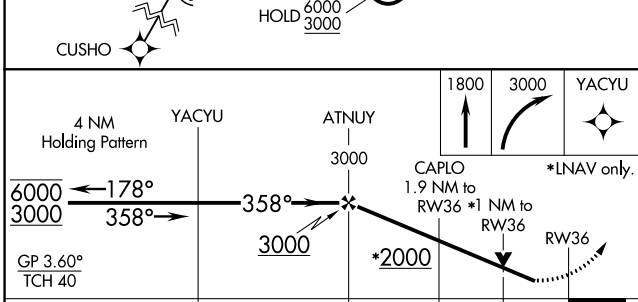
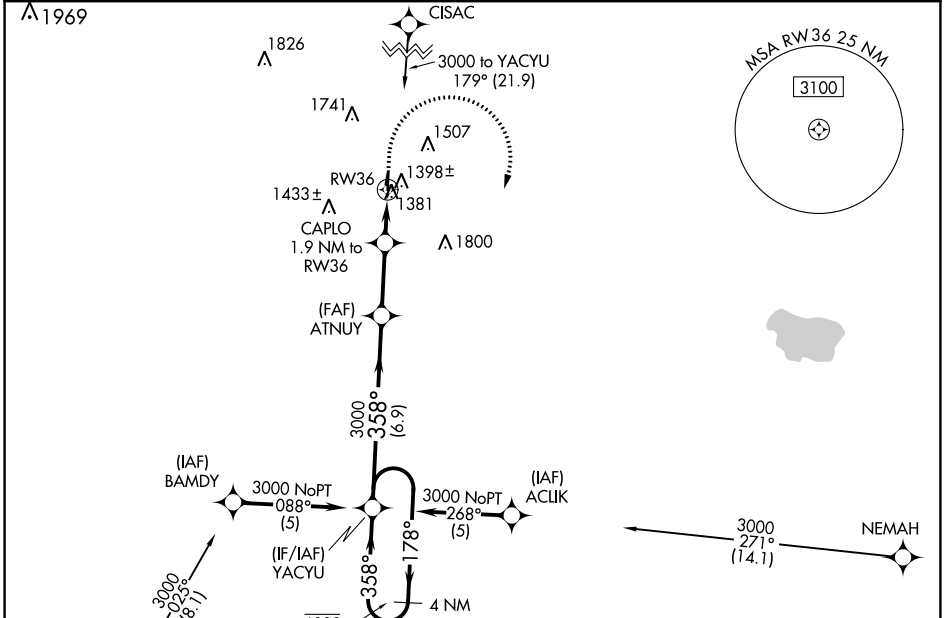
CHEROKEE COUNTY RGNL (CKP)

RNP APCH.

**▼** Rwy 36 helicopter visibility reduction below 3/4 SM NA. Circling to Rwy 1-19 NA. Circling Rwy 18 NA at night.

MISSED APPROACH: Climb to 1800 then climbing right turn to 3000 direct YACYU and hold.

AWOS-3 <b>119.225</b>	MINNEAPOLIS CENTER <b>125.025 235.625</b>	UNICOM <b>122.8 (CTAF) 0</b>
--------------------------	--	---------------------------------



CATEGORY	A	B	C	D
LPV DA	1492-1	266 (300-1)		NA
LNAV/VNAV DA	1540-1	314 (400-1)		NA
LNAV MDA	1660-1	434 (500-1)		NA
<b>C</b> CIRCLING	1760-1 534 (600-1)	1820-1 594 (600-1)		NA

NC-3, 22 FEB 2024 to 21 MAR 2024

NC-3, 22 FEB 2024 to 21 MAR 2024