

WAAS CH 87040 W14A	APP CRS 140°	Rwy Idg TDZE 66 Apt Elev 67
--	------------------------	---

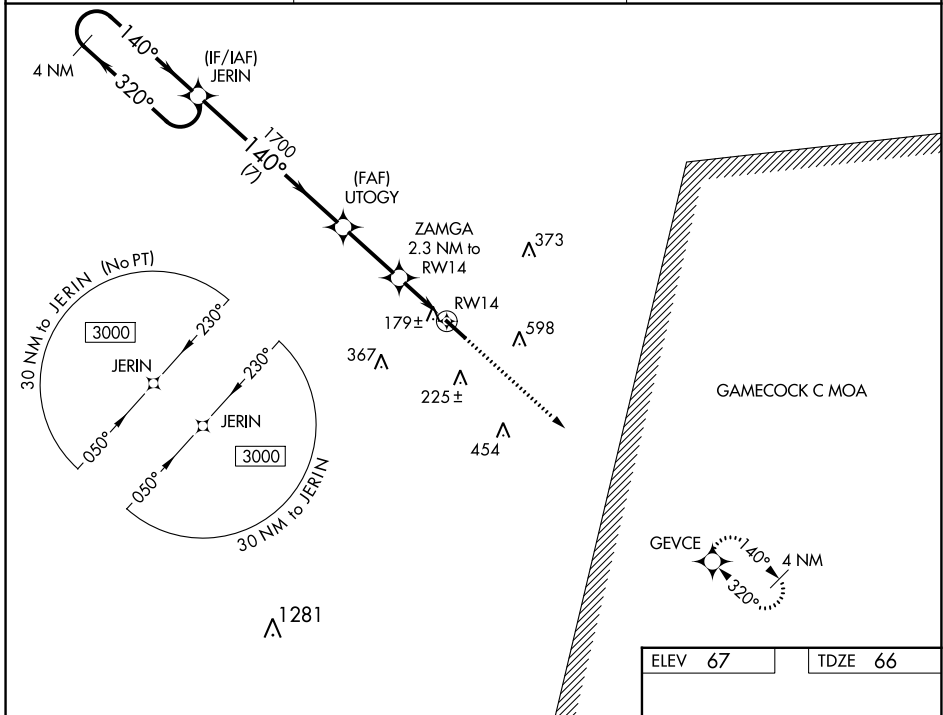
RNAV (GPS) RWY 14

WILLIAMSBURG RGNL (CKI)

⚠ For uncompensated Baro-VNAV systems, LNAV/VNAV NA below -15°C (5°F) or above 54°C (130°F). Baro-VNAV and VDP NA when using Florence Rgnl altimeter setting.
⚠ DME/DME RNP-0.3 NA.

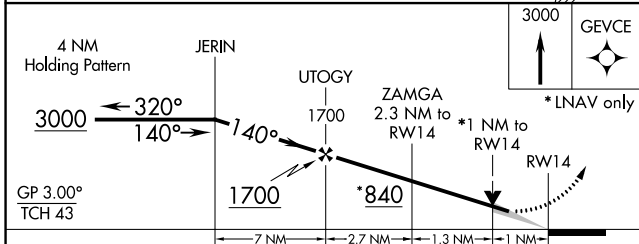
MISSED APPROACH: Climb to 3000 direct GEVCE and hold.

AWOS-3 124.775	MYRTLE BEACH APP CON * 127.4 257.95	UNICOM 122.7 (CTAF) 0
--------------------------	---	---------------------------------



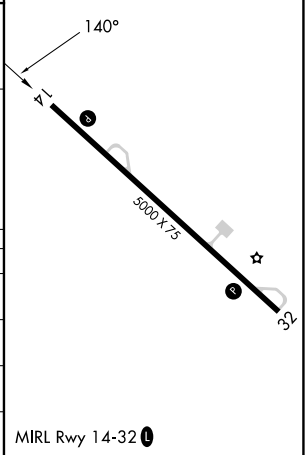
SE-2, 22 FEB 2024 to 21 MAR 2024

SE-2, 22 FEB 2024 to 21 MAR 2024



ELEV 67	TDZE 66
---------	---------

CATEGORY	A	B	C	D
LPV DA	334-1 268 (300-1)	334-7/8	268 (300-7/8)	
LNAV/VNAV DA		454-1 1/4	388 (400-1 1/4)	
LNAV MDA		440-1	374 (400-1)	
C CIRCLING	480-1 413 (500-1)	580-1 513 (600-1)	960-2 3/4 893 (900-2 3/4)	960-3 893 (900-3)



WAAS CH 45740 W32A	APP CRS 320°	Rwy Idg TDZE Apt Elev	5000 67 67
--	------------------------	-----------------------------	---------------------------------------

RNAV (GPS) RWY 32

WILLIAMSBURG RGNL (CKI)

⚠ For uncompensated Baro-VNAV systems, LNAV/VNAV NA below -1.5°C (5°F) or above 54°C (130°F). Baro-VNAV and VDP NA when using Florence Rgnl altimeter setting. Rwy 32 helicopter visibility reduction below ¾ SM NA. DME/DME RNP-0.3 NA.

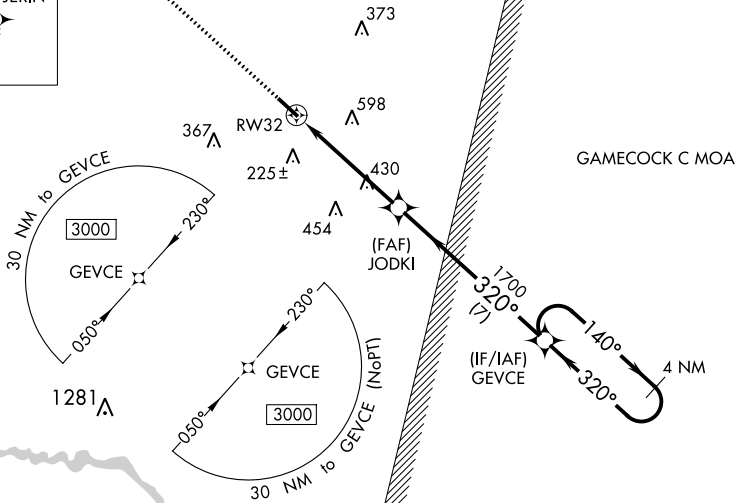
MISSED APPROACH: Climb to 3000 direct JERIN and hold.

AWOS-3
124.775

MYRTLE BEACH APP CON ★
127.4 257.95

UNICOM
122.7 (CTAF) **📻**

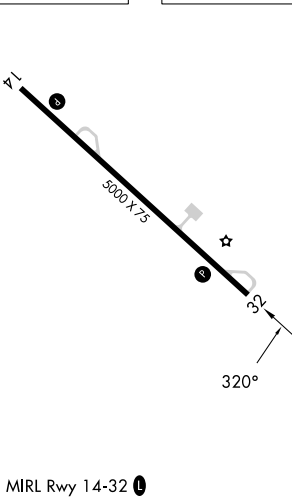
MISSED APCH FIX



SE-2, 22 FEB 2024 to 21 MAR 2024

SE-2, 22 FEB 2024 to 21 MAR 2024

ELEV 67 TDZE 67



3000	JERIN	GEVCE 4 NM Holding Pattern			
*LNAV only	JODKI 1700	GP 3.00' TCH 45			
RW32	*1.8 NM to RW32	320°			
	1700	140°			
	1700	320°			
	1700	3000			
	1.8 NM	3.2 NM	7 NM		
CATEGORY	A	B	C	D	
LPV DA	317- ⁷ / ₈		250 (300- ⁷ / ₈)		
LNAV/VNAV DA	334- ⁷ / ₈		267 (300- ⁷ / ₈)		
LNAV MDA	680-1	613 (700-1)	680-1 ³ / ₄	613 (700-1 ³ / ₄)	
C CIRCLING	680-1	613 (700-1)	960-2 ³ / ₄ 893 (900-2 ³ / ₄)	960-3 893 (900-3)	