

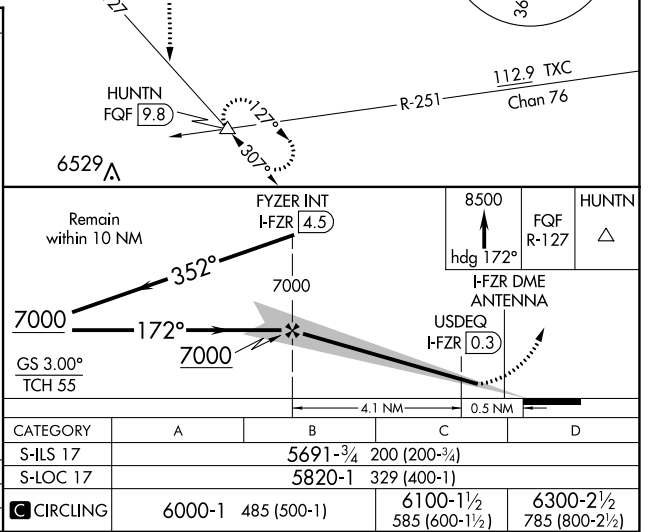
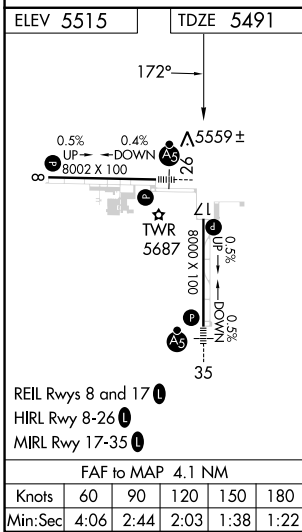
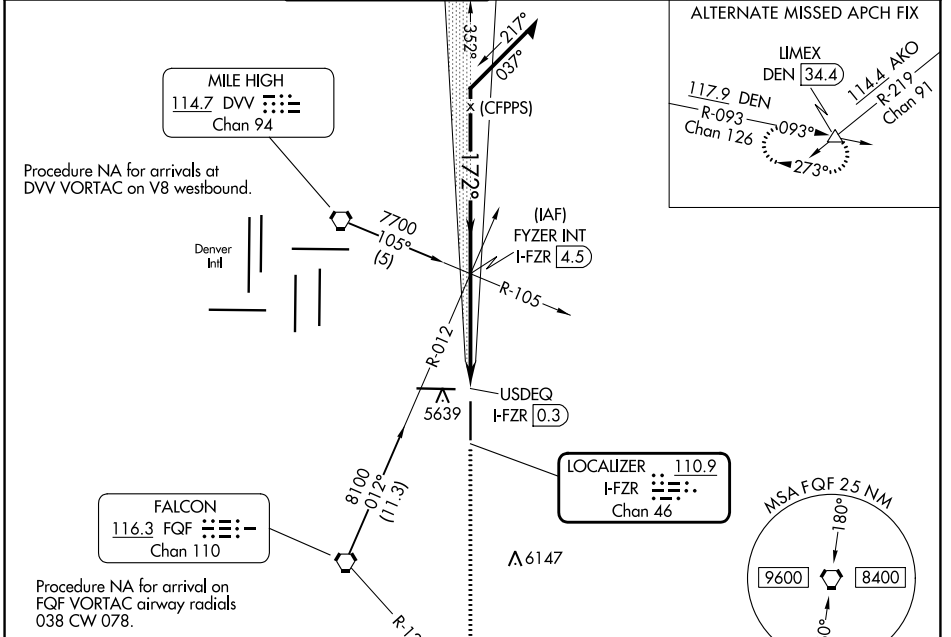
LOC/DME I-FZR 110.9 Chan 46	APP CRS 172°	Rwy Idg TDZE Apt Elev	8000 5491 5515
--	------------------------	-----------------------------	---

ILS or LOC RWY 17

COLORADO AIR AND SPACE PORT (CFO)

MISSED APPROACH: Climb to 8500 on heading 172° and FQG VORTAC R-127 to HUNTN INT/FQG 9.8 DME and hold.

ATIS 119.025	DENVER APP CON 128.25 371.95	SPACE PORT TOWER ★ 120.2 (CTAF)	GND CON 124.7	CLNC DEL 124.7	CLNC DEL 121.75 (When twr closed)	UNICOM 122.95
------------------------	--	---	-------------------------	--------------------------	--	-------------------------



SW-1, 22 FEB 2024 to 21 MAR 2024

SW-1, 22 FEB 2024 to 21 MAR 2024

LOC/DME I-FTG 109.3 Chan 30	APP CRS 263°	Rwy Idg TDZE Apt Elev	8002 5489 5515
--	------------------------	-----------------------------	---

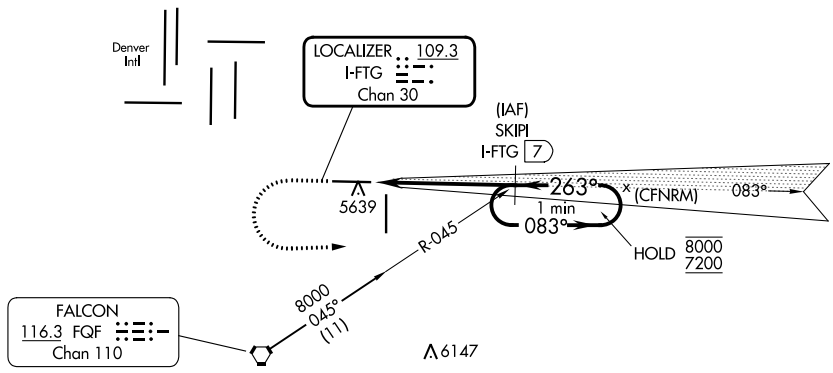
ILS or LOC RWY 26

COLORADO AIR AND SPACE PORT (CFO)

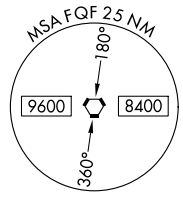
DME required.		MALSR	MISSED APPROACH: Climb to 6100 then climbing left turn to 7200 on heading 080° and on FQG VORTAC R-045 to SKIPI/I-FTG 7 DME and hold.			
▼ For inop ALS, increase S-LOC 26 Cat C/D visibility to 1 1/8 SM. Autopilot coupled approach NA below 6250 MSL. ▲			GND CON	CLNC DEL	CLNC DEL	UNICOM
ATIS 119.025	DENVER APP CON 128.25 371.95	SPACE PORT TOWER * 120.2 (CTAF)	124.7	124.7	121.75 (When twr closed)	122.95

SW-1, 22 FEB 2024 to 21 MAR 2024

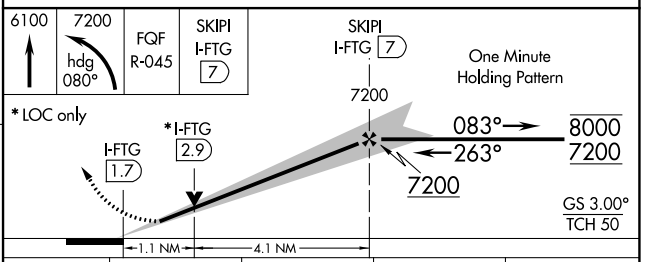
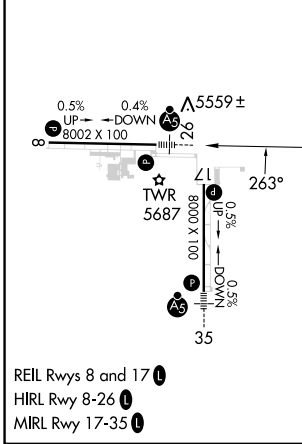
SW-1, 22 FEB 2024 to 21 MAR 2024



Procedure NA for arrival on FQG VORTAC airway radials 038 CW 078.



ELEV 5515	TDZE 5489	△ 6529
-----------	-----------	--------



CATEGORY	A	B	C	D
S-ILS 26	5689-1/2 200 (200-1/2)			
S-LOC 26	5900-1/2 411 (400-1/2)		5900-3/4 411 (400-3/4)	
<input checked="" type="checkbox"/> CIRCLING	6000-1 485 (500-1)		6100-1 1/2 585 (600-1 1/2)	6300-2 1/2 785 (800-2 1/2)

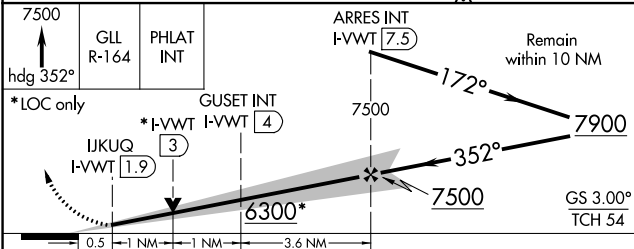
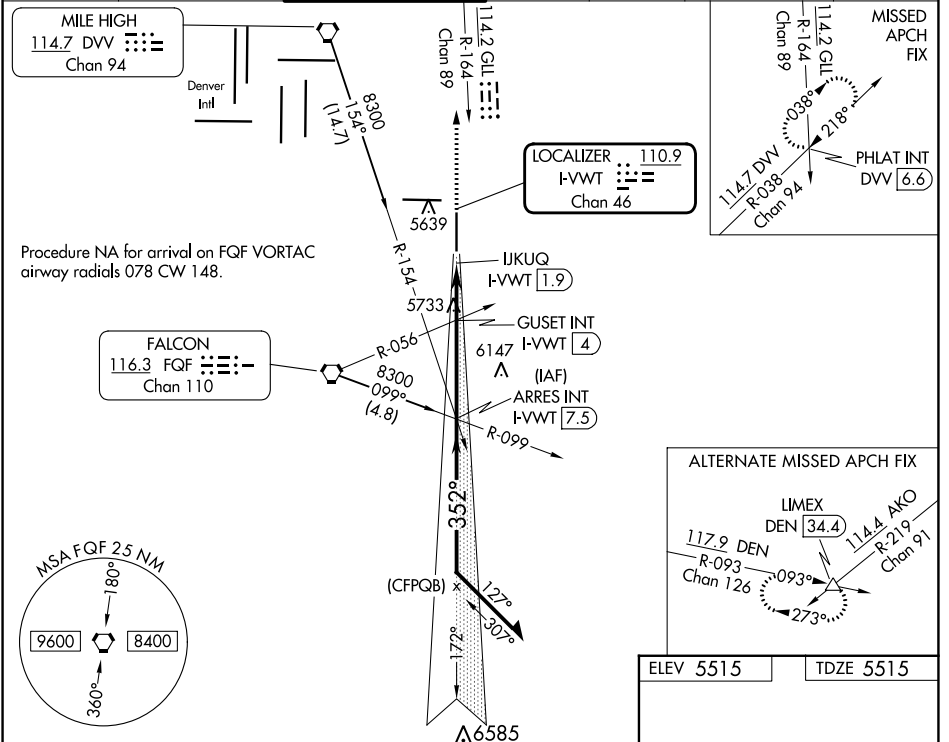
LOC/DME I-VVWT 110.9 Chan 46	APP CRS 352°	Rwy Idg TDZE Apt Elev 8000 5515 5515
---	------------------------	--

ILS or LOC RWY 35

COLORADO AIR AND SPACE PORT (CFO)

⚠ For inop ALS, increase S-LOC 35 Cats C and D visibility to 2½ SM.	MALSR 	MISSED APPROACH: Climb to 7500 on heading 352° and on GLL VOR/DME R-164 to PHLAT INT/DVV 6.6 DME and hold.
--	-----------	--

ATIS 119.025	DENVER APP CON 128.25 371.95	SPACE PORT TOWER * 120.2 (CTAF)	GND CON 124.7	CLNC DEL 124.7	CLNC DEL 121.75 (When twr closed)	UNICOM 122.95
------------------------	--	---	-------------------------	--------------------------	--	-------------------------



ELEV 5515	TDZE 5515
REIL Rwy 8 and 17	
HIRL Rwy 8-26	
MIRL Rwy 17-35	
FAF to MAP 5.6 NM	
Knots	60 90 120 150 180
Min:Sec	5:36 3:44 2:48 2:14 1:52

CATEGORY	A	B	C	D
S-ILS 35	5715-½		200 (200-½)	
S-LOC 35	6300-½ 785 (800-½)	6300-¾ 785 (800-¾)	6300-1¾ 785 (800-1¾)	
GUSET FIX MINIMUMS (DUAL VOR RECEIVERS OR DME REQUIRED)				
S-LOC 35	6040-½	525 (600-½)	6040-1	525 (600-1)

SW-1, 22 FEB 2024 to 21 MAR 2024

SW-1, 22 FEB 2024 to 21 MAR 2024

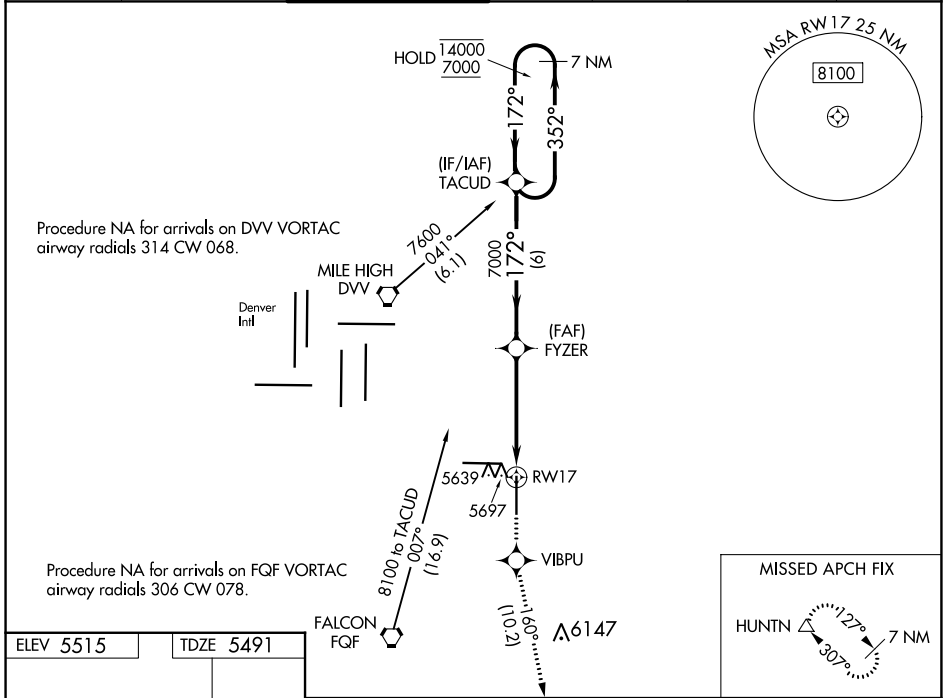
WAAS CH 82209 W17A	APP CRS 172°	Rwy Idg TDZE Apt Elev	8000 5491 5515
--	------------------------	-----------------------------	---

RNAV (GPS) RWY 17

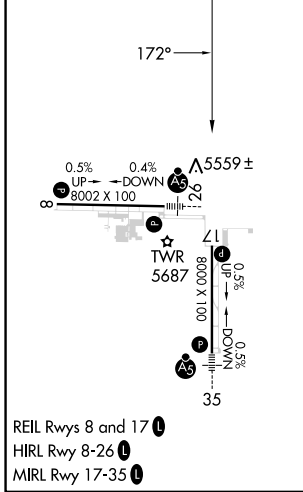
COLORADO AIR AND SPACE PORT (CFO)

RNP APCH-GPS.				MISSED APPROACH: Climb to 8500 direct VIBPU and on track 160° to HUNTN and hold.			
<p>▼ For uncompensated Baro-VNAV systems, LNAV/VNAV NA below -25°C or above 48°C.</p>							

ATIS 119.025	DENVER APP CON 128.25 371.95	SPACE PORT TOWER* 120.2 (CTAF) 0	GND CON 124.7	CLNC DEL 124.7	CLNC DEL 121.75 (When twr closed)	UNICOM 122.95
------------------------	--	--	-------------------------	--------------------------	--	-------------------------



ELEV 5515	TDZE 5491
-----------	-----------



CATEGORY	A	B	C	D
LPV DA	5691-3/4 200 (200-3/4)			
LNAV/VNAV DA	5916-1 3/8 425 (500-1 3/8)			
LNAV MDA	6000-1	509 (500-1)	6000-1 1/2	509 (500-1 1/2)
CIRCLING	6000-1	485 (500-1)	6100-1 1/2 585 (600-1 1/2)	6300-2 1/2 785 (800-2 1/2)

SW-1, 22 FEB 2024 to 21 MAR 2024

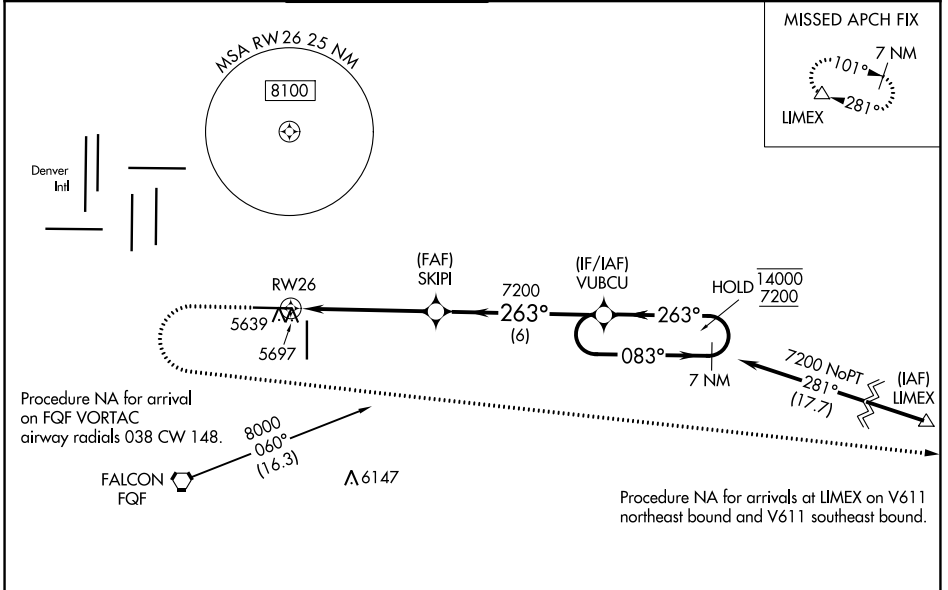
SW-1, 22 FEB 2024 to 21 MAR 2024

WAAS CH 93909 W26A	APP CRS 263°	Rwy Idg TDZE Apt Elev	8002 5489 5515
--	------------------------	-----------------------------	---

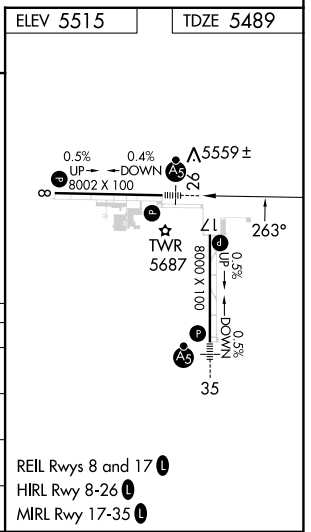
RNAV (GPS) RWY 26

COLORADO AIR AND SPACE PORT (CFO)

RNP APCH.		MALSR		MISSED APPROACH: (Do not exceed 200K until LIMEX) Climb to 6100 then climbing left turn to 7600 direct LIMEX and hold.		
<p>▽ ▲</p> <p>For uncompensated Baro-VNAV systems, LNAV/VNAV NA below -25°C or above 48°C. For inop ALS, increase LNAV/VNAV all Cats visibility to 1½ SM, and increase LNAV Cat C/D visibility to 1½ SM.</p>						
ATIS 119.025	DENVER APP CON 128.25 371.95	SPACE PORT TOWER * 120.2 (CTAF) 1	GND CON 124.7	CLNC DEL 124.7	CLNC DEL 121.75 (When twr closed)	UNICOM 122.95



ELEV 5515		TDZE 5489		
6100	7600	LIMEX		
*LNAV only		*1.4 NM to RWY 26		
RWY 26		SKIPI 7200		
1.4 NM		3.8 NM		
6 NM		7 NM Holding Pattern		
263°		083°		
263°		14000 7200		
GP 3.00°		TCH 50		
CATEGORY	A	B	C	D
LPV DA	5689-½		200 (200-½)	
LNAV/VNAV DA	5858-¾		369 (400-¾)	
LNAV MDA	5960-½ 471 (500-½)		5960-1 471 (500-1)	
CIRCLING	6000-1 485 (500-1)		6100-1½ 585 (600-1½) 6300-2½ 785 (800-2½)	



SW-1, 22 FEB 2024 to 21 MAR 2024

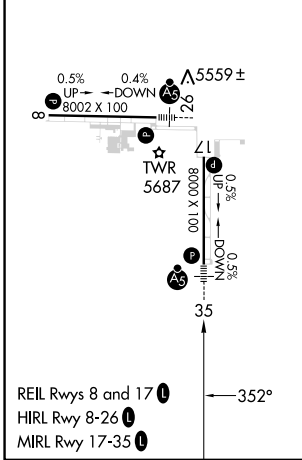
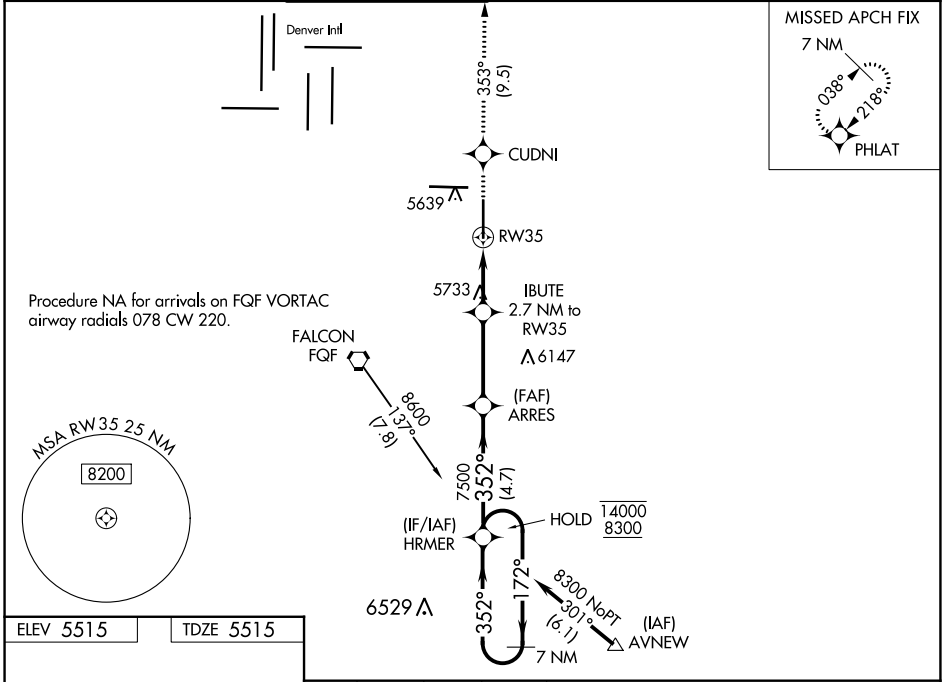
SW-1, 22 FEB 2024 to 21 MAR 2024

WAAS CH 93809 W35A	APP CRS 352°	Rwy Idg TDZE Apt Elev	8000 5515 5515
--	------------------------	-----------------------------	---

RNAV (GPS) RWY 35

COLORADO AIR AND SPACE PORT (CFO)

RNP APCH. ▼ For uncompensated Baro-VNAV systems, LNAV/VNAV NA below -25°C or above 46°C. For inop ALS, increase LNAV/VNAV all Cats visibility to 3/8 SM. ▲		MALSR 	MISSED APPROACH: Climb to 8000 direct CUDNI and on track 353° to PHLAT and hold.			
ATIS 119.025	DENVER APP CON 128.25 371.95	SPACE PORT TOWER* 120.2 (CTAF)	GND CON 124.7	CLNC DEL 124.7	CLNC DEL 121.75 (When twr closed)	UNICOM 122.95



8000	CUDNI	tr 353°	PHLAT	HRMER	7 NM Holding Pattern
*LNAV only		IBUTE 2.7 NM to RW35	7500	172° → 14000	← 352° 8300
1.5 NM to RW35		6420	7500	GP 3.00° TCH 54	
-1.5 NM		1.2 NM	3.4 NM	4.7 NM	
CATEGORY	A	B	C	D	
LPV DA	5715-1/2		200 (200-1/2)		
LNAV/VNAV DA	5783-1/2		268 (300-1/2)		
LNAV MDA	6040-1/2 525 (600-1/2)		6040-1 525 (600-1)		
<input checked="" type="checkbox"/> CIRCLING	6040-1 525 (600-1)		6100-1 1/2 585 (600-1 1/2) 6300-2 1/2 785 (800-2 1/2)		

SW-1, 22 FEB 2024 to 21 MAR 2024

SW-1, 22 FEB 2024 to 21 MAR 2024