


| | | | |
|----------------------------|------------------------|-----------------------------|---|
| LOC I-SQK 108.35 | APP CRS 185° | Rwy Idg TDZE Apt Elev | 6503 866 866 |
|----------------------------|------------------------|-----------------------------|---|

ILS or LOC RWY 18

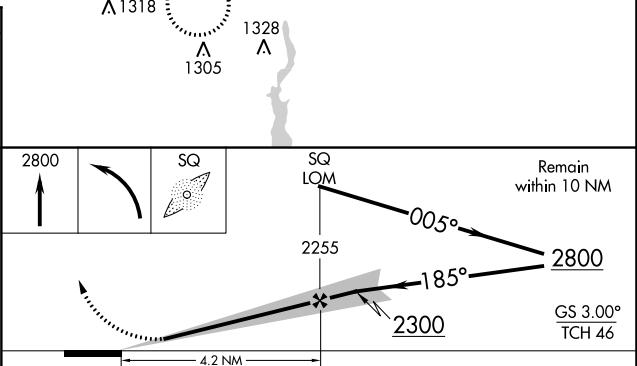
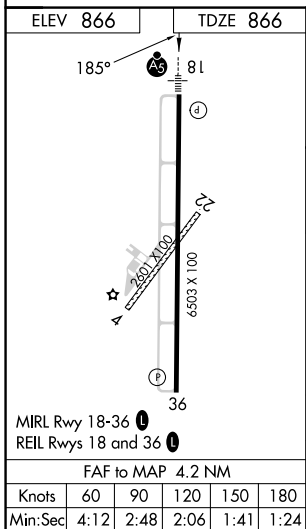
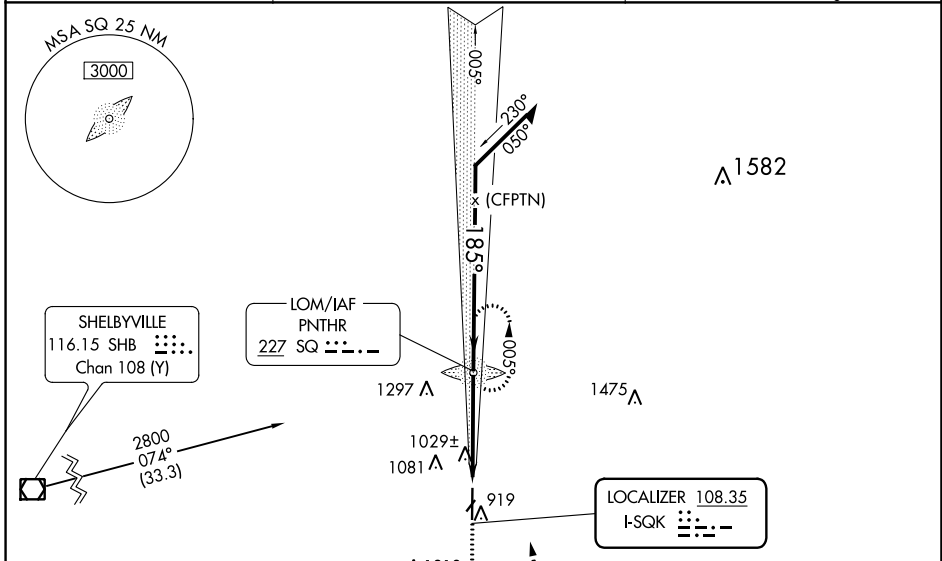
METTEL FLD (CEV)


ADF required.

NA Circling NA to Rwys 4 and 22. For inop MALS, increase S-LOC 18 Cats C/D visibility to 1½ mile. When local altimeter setting not received, use James M Cox Dayton Intl altimeter setting and increase ILS DA to 1237 feet and visibility all Cats to ¾ mile, increase all MDA 140 feet and LOC Cats C/D visibility to 1½ mile, and Circling Cat B visibility to 1¼ miles and Cat C to 2¾ miles and Cat D to 3 miles. When using James M Cox Dayton Intl altimeter setting: for inop MALS, increase S-ILS 18 all Cats visibility to 1 mile and increase S-LOC 18 Cat A/B visibility to 1 mile and Cat C/D to 1½ mile.

MALS  MISSED APPROACH: Climb to 2800 then left turn direct SQ LOM and hold.

| | | |
|--------------------------|---|---|
| AWOS-3 118.325 | COLUMBUS APP CON 118.425 352.05 | UNICOM 122.8 (CTAF)  |
|--------------------------|---|---|



| CATEGORY | A | B | C | D |
|--|-----------------------|-----------------------|-------------------------|-------------------------|
| S-ILS 18 | 1116-½ | | 250 (300-½) | |
| S-LOC 18 | 1280-½ | 414 (500-½) | 1280-¾ | 414 (500-¾) |
|  CIRCLING | 1440-1 574 (600-1) | 1540-1 674 (700-1) | 1620-2¼ 754 (800-2¼) | 1620-2½ 754 (800-2½) |

EC-2, 22 FEB 2024 to 21 MAR 2024

EC-2, 22 FEB 2024 to 21 MAR 2024

| | | | |
|--|------------------------|-----------------------------|---|
| WAAS CH 93699 W18A | APP CRS 185° | Rwy Idg TDZE Apt Elev | 6503 866 866 |
|--|------------------------|-----------------------------|---|

RNAV (GPS) RWY 18

METTEL FLD (CEV)

RNP APCH.

NA For uncompensated Baro-VNAV systems, LNAV/VNAV NA below -16°C or above 54°C. VDP and Baro-VNAV NA when using James M. Cox Dayton Intl altimeter setting. Circling Rwy 4, 22 NA at night. For inop ALS increase LPV all Cats visibility to 1 SM, LNAV/VNAV all Cats visibility to 1 3/8 SM, and LNAV Cats A/B visibility to 1 SM. For inop ALS when using James M. Cox Dayton Intl altimeter setting, increase LPV all Cats visibility to 1 SM, LNAV/VNAV all Cats visibility to 1 3/4 SM. When local altimeter setting not received, use James M. Cox Dayton Intl altimeter setting and increase all DA 121 feet and all MDA 140 feet: increase LPV and LNAV/VNAV all Cats and LNAV Cat C/D visibility 3/8 SM, and Circling Cat C/D visibility 1/2 SM.

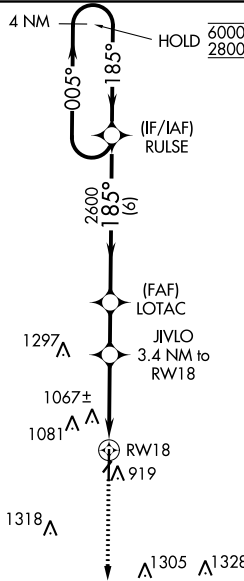
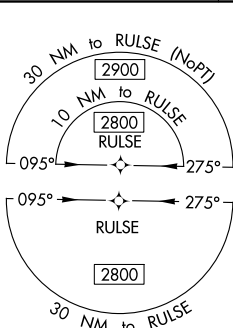


MISSED APPROACH:
Climb to 2800 direct WALAG and hold.

AWOS-3
118.325

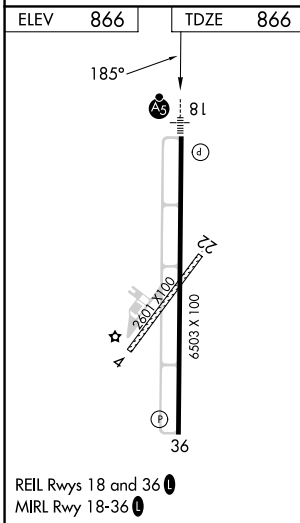
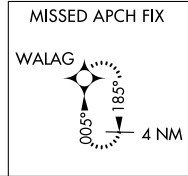
COLUMBUS APP CON
118.425 352.05

UNICOM
122.8 (CTAF)



△1582

△1475



REIL Rws 18 and 36
MIRL Rwy 18-36

| | | | | | | |
|-----------------|----------|-----------------------|-----------------------|-------------------------------|-------------------------------|----------------------|
| ELEV 866 | TDZE 866 | 2800 | WALAG | LOTAC | RULSE | 4 NM Holding Pattern |
| | | *LNAV only | JVLO 3.4 NM to RW18 | 2600 | 185° → 6000 ← 005° 2800 | GP 3.00° TCH 46 |
| | | 1.3 NM | 2.1 NM | 1.9 NM | 6 NM | |
| CATEGORY | | A | B | C | D | |
| LPV DA | | | 1116-1/2 | 250 (300-1/2) | | |
| LNAV/VNAV DA | | | 1385-1 | 519 (600-1) | | |
| LNAV MDA | | 1320-1/2 | 454 (500-1/2) | 1320-7/8 | 454 (500-7/8) | |
| CIRCLING | | 1440-1 574 (600-1) | 1540-1 674 (700-1) | 1620-2 1/4 754 (800-2 1/4) | 1620-2 1/2 754 (800-2 1/2) | |

EC-2, 22 FEB 2024 to 21 MAR 2024

EC-2, 22 FEB 2024 to 21 MAR 2024

| | | | |
|--|------------------------|-----------------------------|---|
| WAAS CH 93929 W36A | APP CRS 005° | Rwy Idg TDZE Apt Elev | 6503 862 866 |
|--|------------------------|-----------------------------|---|

RNAV (GPS) RWY 36

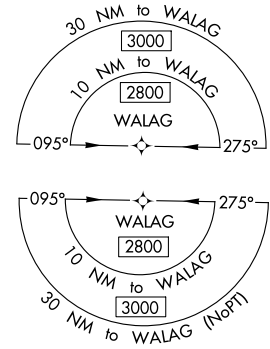
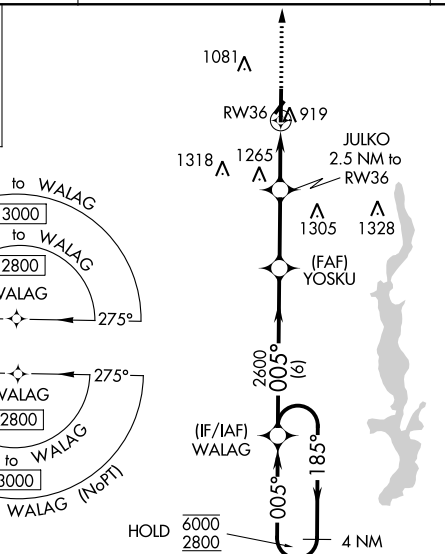
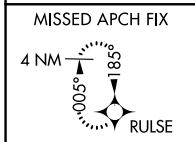
METTEL FLD (CEV)

RNP APCH.

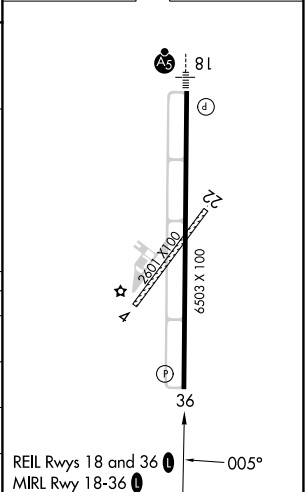
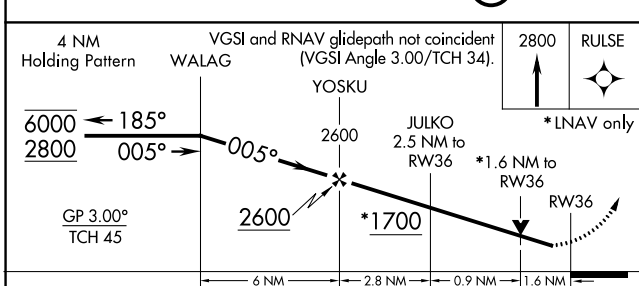
NA For uncompensated Baro-VNAV systems, LNAV/VNAV NA below -16°C or above 54°C. VDP and Baro VNAV NA when using James M. Cox Dayton Intl altimeter setting. Rwy 36 helicopter visibility reduction below 3/4 SM NA. Circling Rwy 4, 22 NA at night. When local altimeter setting not received, use James M Cox Dayton Intl altimeter setting and increase LPV DA to 1253 feet and visibility all Cats to 1 1/8 SM, LNAV/VNAV DA to 1472 feet and visibility all Cats to 1 1/4 SM, increase all MDA 140 feet and LNAV Cats C/D visibility to 1 1/8 SM, Circling Cat B to 1 1/4 SM, Cat C to 2 3/4 SM, and Cat D to 3 SM.

MISSED APPROACH: Climb to 2800 direct RULSE and hold.

| | | |
|--------------------------|---|---------------------------------|
| AWOS-3 118.325 | COLUMBUS APP CON 118.425 352.05 | UNICOM 122.8 (CTAF) 0 |
|--------------------------|---|---------------------------------|



| | |
|----------|----------|
| ELEV 866 | TDZE 862 |
|----------|----------|



| CATEGORY | A | B | C | D |
|--------------|----------------------------|-----------------------|-------------------------------|-------------------------------|
| LPV DA | 1132-7/8 270 (300-7/8) | | | |
| LNAV/VNAV DA | 1351-1 3/8 489 (500-1 3/8) | | | |
| LNAV MDA | 1400-1 | 538 (600-1) | 1400-1 1/2 | 538 (600-1 1/2) |
| CIRCLING | 1440-1 574 (600-1) | 1540-1 674 (700-1) | 1620-2 1/4 754 (800-2 1/4) | 1620-2 1/2 754 (800-2 1/2) |

REIL Rwy 18 and 36 0 005°
MIRL Rwy 18-36 0

EC-2, 22 FEB 2024 to 21 MAR 2024

EC-2, 22 FEB 2024 to 21 MAR 2024