

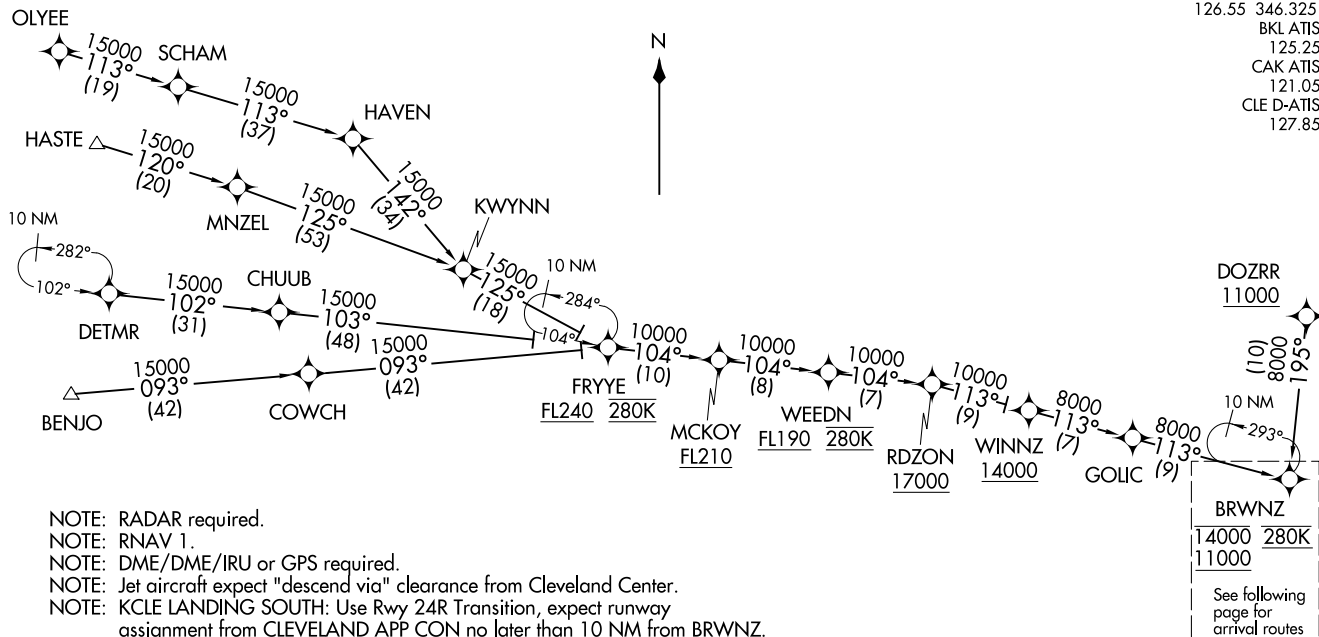
BRWNZ FOUR ARRIVAL (RNAV) Transition Routes  
(BRWNZ.BRWNZ4) 22APR21

CLEVELAND, OHIO

CLEVELAND APP CON  
126.55 346.325  
BKL ATIS  
125.25  
CAK ATIS  
121.05  
CLE D-ATIS  
127.85

(BRWNZ.BRWNZ4) 22139  
BRWNZ FOUR ARRIVAL (RNAV) Transition Routes

AL-84 (FAA)



NOTE: Chart not to scale.

(CONTINUED ON FOLLOWING PAGE)

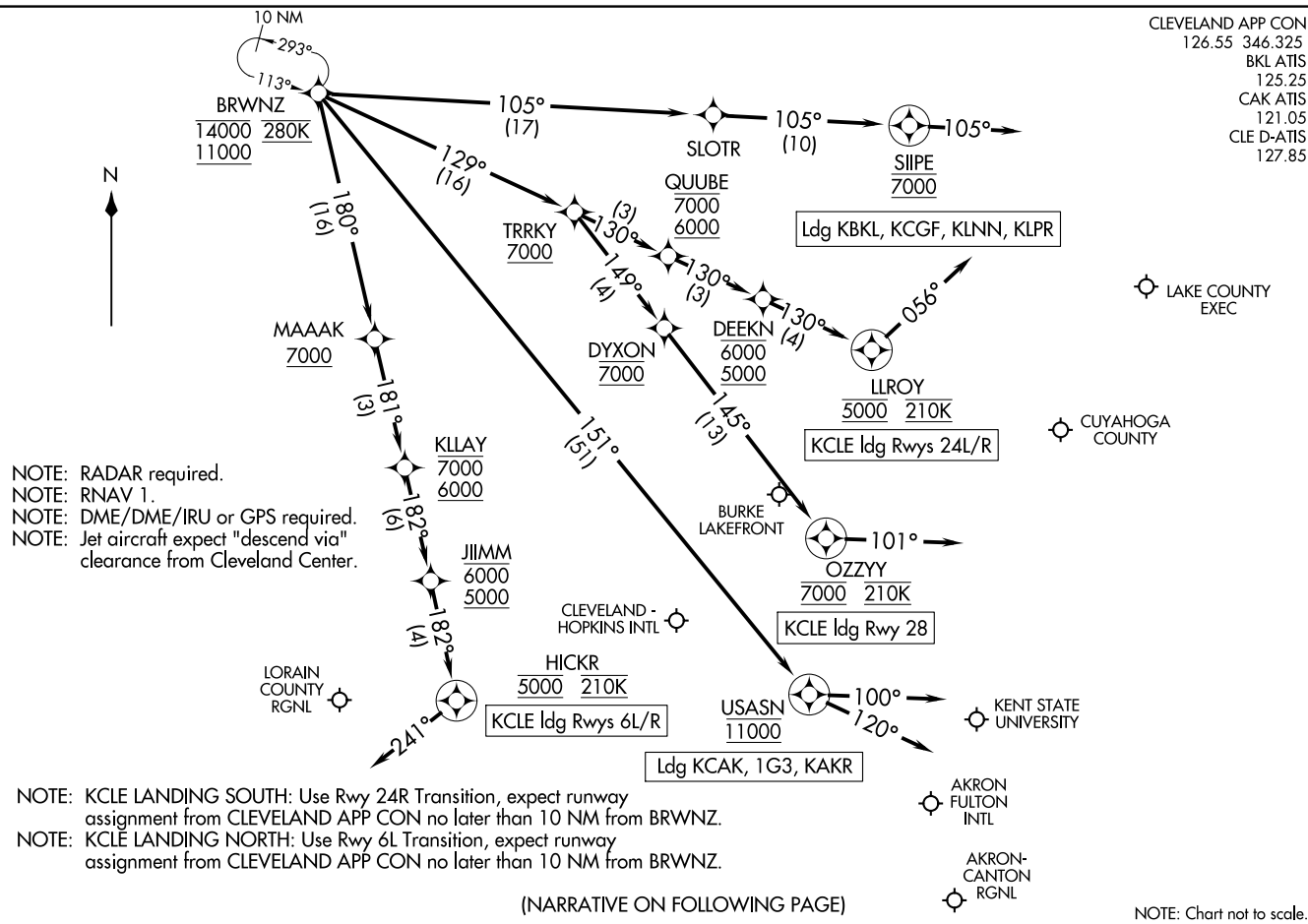
BENJO TRANSITION (BENJO.BRWNZ4)  
DETMR TRANSITION (DETMR.BRWNZ4)  
DOZRR TRANSITION (DOZRR.BRWNZ4)  
FRYYE TRANSITION (FRYYE.BRWNZ4)  
HASTE TRANSITION (HASTE.BRWNZ4)  
OLYEE TRANSITION (OLYEE.BRWNZ4)  
WINNZ TRANSITION (WINNZ.BRWNZ4)

CLEVELAND, OHIO

# BRWNZ FOUR ARRIVAL (RNAV) Arrival Routes

(BRWNZ, BRWNZ4) 22APR21

CLEVELAND, OHIO



# BRWNZ FOUR ARRIVAL (RNAV) Arrival Routes

(BRWNZ, BRWNZ4) 23110

CLEVELAND, OHIO

AL-84 (FAA)

CLEVELAND APP CON  
126.55 346.325  
BKL ATIS  
125.25  
CAK ATIS  
121.05  
CLE D-ATIS  
127.85

LAKE COUNTY  
EXEC

CUYAHOGA  
COUNTY

AKRON  
FULTON  
INTL

AKRON-  
CANTON  
RGNL

KENT STATE  
UNIVERSITY

USASN  
11000

CLEVELAND -  
HOPKINS INTL

LORAIN  
COUNTY  
RGNL

HICKR  
5000 210K  
KCLE Ldg Rwys 6L/R

BURKE  
LAKEFRONT  
OZZY  
7000 210K  
KCLE Ldg Rwy 28

DEEKN  
6000 5000  
LLOY  
5000 210K  
KCLE Ldg Rwys 24L/R

DYXON  
7000

KLAY  
7000 6000  
JIIMM  
6000 5000

MAAAK  
7000

TRRKY  
7000  
QUUBE  
7000 6000

SLOTR  
105° (10)

SIPE  
7000

Ldg KBKL, KCGF, KLNN, KLPR

BRWNZ  
14000 280K  
11000

ARRIVAL ROUTE DESCRIPTION

LANDING KCLE RUNWAYS 6L/R: From BRWNZ on track 180° to cross MAAAK at or above 7000, then on track 181° to cross KLLAY between 6000 and 7000, then on track 182° to cross JIIMM between 5000 and 6000, then on track 182° to cross HICKR at 5000 and at 210K, then on heading 241° or as assigned by ATC. Expect ILS, RNAV (RNP), or RNAV (GPS) approach from HICKR, or RADAR vectors to final approach course.

LANDING KCLE RUNWAYS 24L/R: From BRWNZ on track 129° to cross TRRKY at or above 7000, then on track 130° to cross QUUBE between 6000 and 7000, then on track 130° to cross DEEKN between 5000 and 6000, then on track 130° to cross LLROY at 5000 and at 210K, then on heading 056° or as assigned by ATC. Expect ILS, RNAV (RNP), or RNAV (GPS) approach from LLROY, or RADAR vectors to final approach course.

LANDING KCLE RUNWAY 28: From BRWNZ on track 129° to cross TRRKY at or above 7000, then on track 149° to cross DYXON at 7000, then on track 145° to cross OZZYY at 7000 and at 210K, then on heading 101° or as assigned by ATC. Expect RADAR vectors to final approach course.

LANDING 1G3/KAKR: From BRWNZ on track 151° to cross USASN at 11000, then on track 100°. Expect RADAR vectors to final approach course.

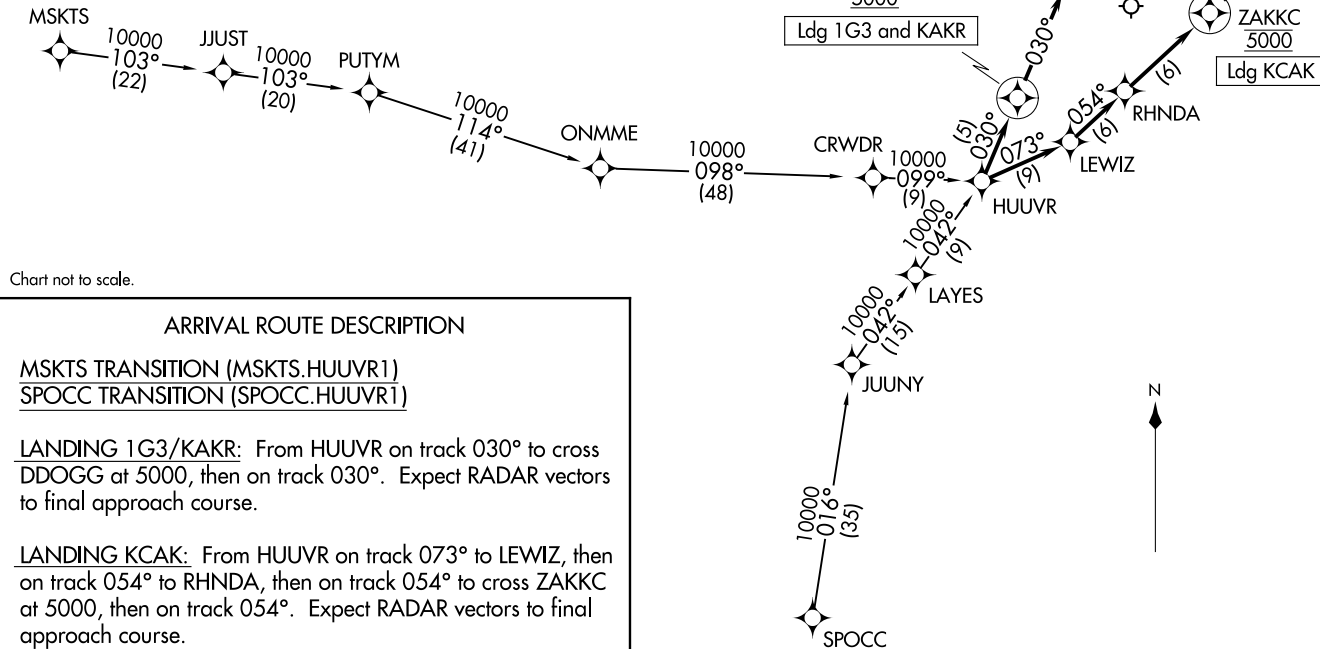
LANDING KLPR/KLNN/KCGF/KBKL: From BRWNZ on track 105° to SLOTR, then on track 105° to cross SIPE at 7000, then on track 105°. Expect RADAR vectors to final approach course.

LANDING KCAK: From BRWNZ on track 151° to cross USASN at 11000, then on track 120°. Expect RADAR vectors to final approach course.

HUUVR ONE ARRIVAL (RNAV)  
(HUUVR.HUUVR1) 24MAR18

CLEVELAND APP CON★  
125.5 371.875  
CAK ATIS  
121.05

NOTE: RADAR required.  
NOTE: RNAV 1.  
NOTE: DME/DME/IRU or GPS required.

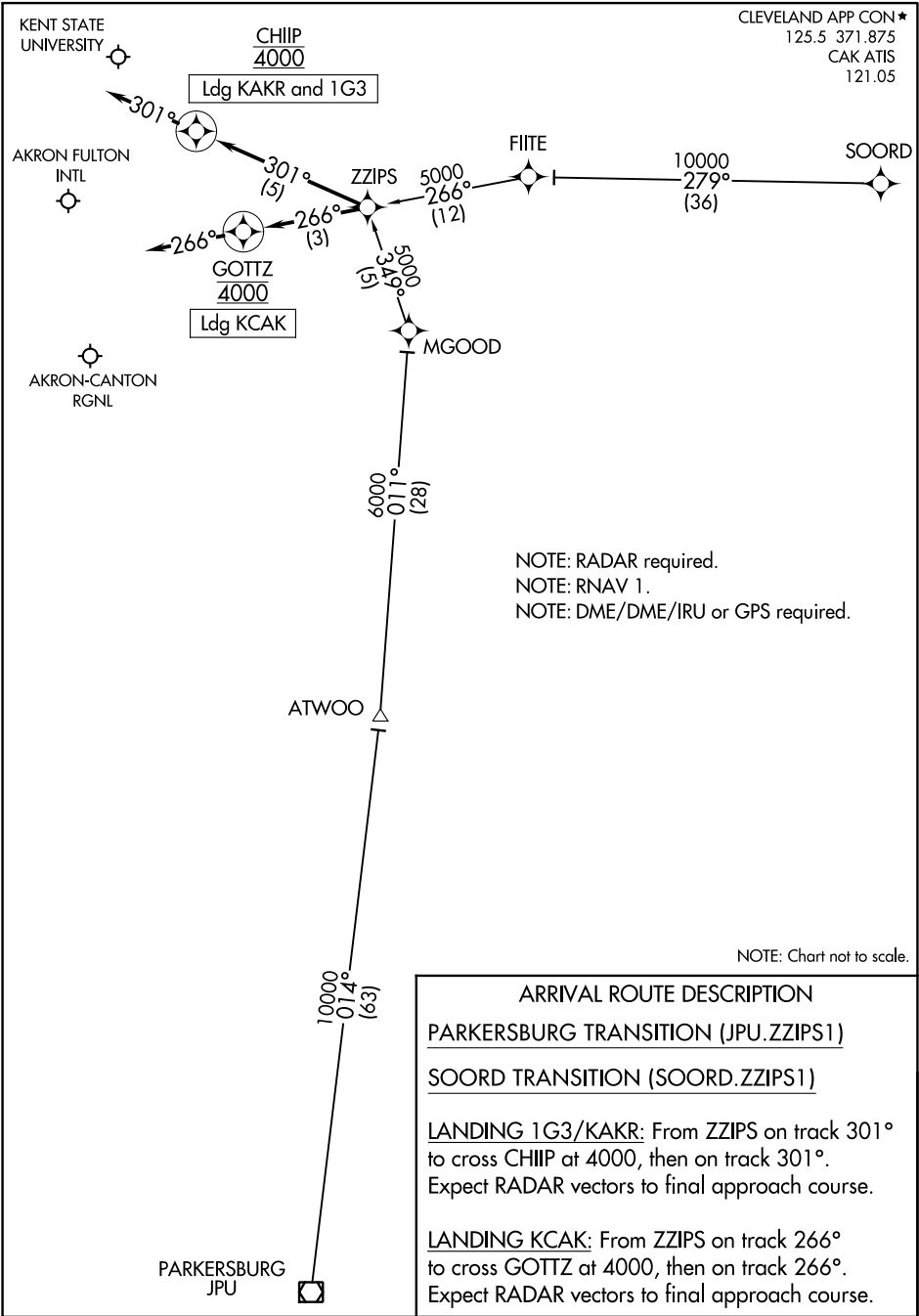


AKRON, OHIO

(HUUVR.HUUVR1) 20198  
HUUVR ONE ARRIVAL (RNAV)

AL-638 (FAA)

AKRON, OHIO



EC-2, 22 FEB 2024 to 21 MAR 2024

EC-2, 22 FEB 2024 to 21 MAR 2024