


ILS or LOC RWY 12

BOZEMAN YELLOWSTONE INTL (BZN)

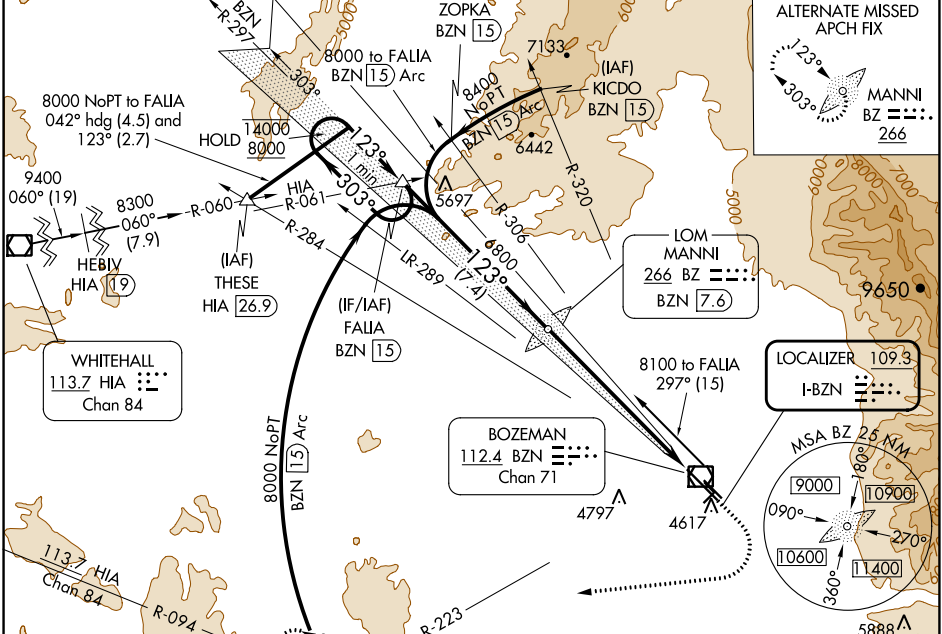
LOC I-BZN 109.3	APP CRS 123°	Rwy ldg 8994
		TDZE 4443
		Apt Elev 4473

RADAR required for procedure entry at BRIGR.

MALS 

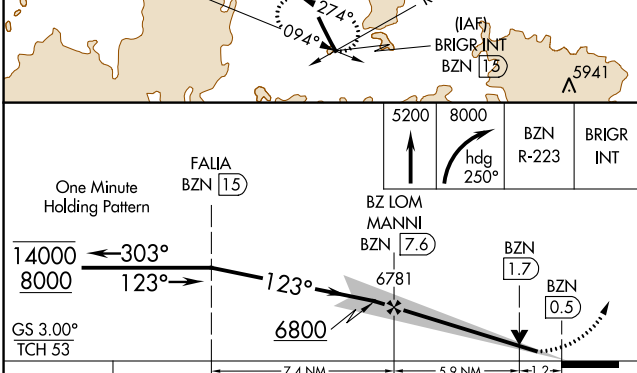
MISSED APPROACH: Climb to 5200 then climbing right turn to 8000 on heading 250° and on BZN VOR/DME R-223 to BRIGR INT/BZN 15 DME and hold.

ATIS 135.425	BIG SKY APP CON* 118.975 226.675	BOZEMAN TOWER* 118.2 (CTAF) 0	GND CON 121.8	UNICOM 122.95
------------------------	--	---	-------------------------	-------------------------

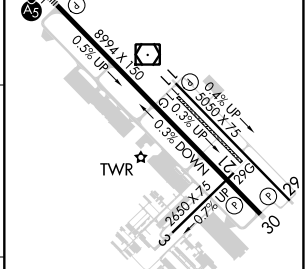


NW-1, 22 FEB 2024 to 21 MAR 2024

NW-1, 22 FEB 2024 to 21 MAR 2024



ELEV 4473	TDZE 4443
Rwy 11G-29G: 2802 X 80	



CATEGORY	A	B	C	D
S-ILS 12	4643-1/2		200 (200-1/2)	
S-LOC 12	4860-1/2	417 (400-1/2)	4860-3/4	417 (400-3/4)
CIRCLING	4940-1	467 (500-1)	5160-2 687 (700-2)	5360-3 887 (900-3)

REIL Rwy 30	HIRL Rwy 12-30	MIRL Rwy 11-29			
FAF to MAP 7.1 NM					
Knots	60	90	120	150	180
Min:Sec	7:06	4:44	3:33	2:50	2:22

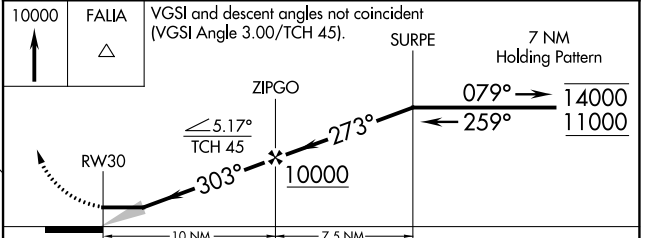
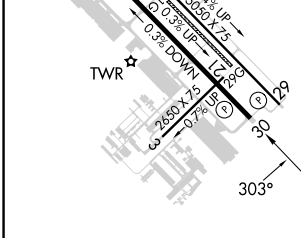
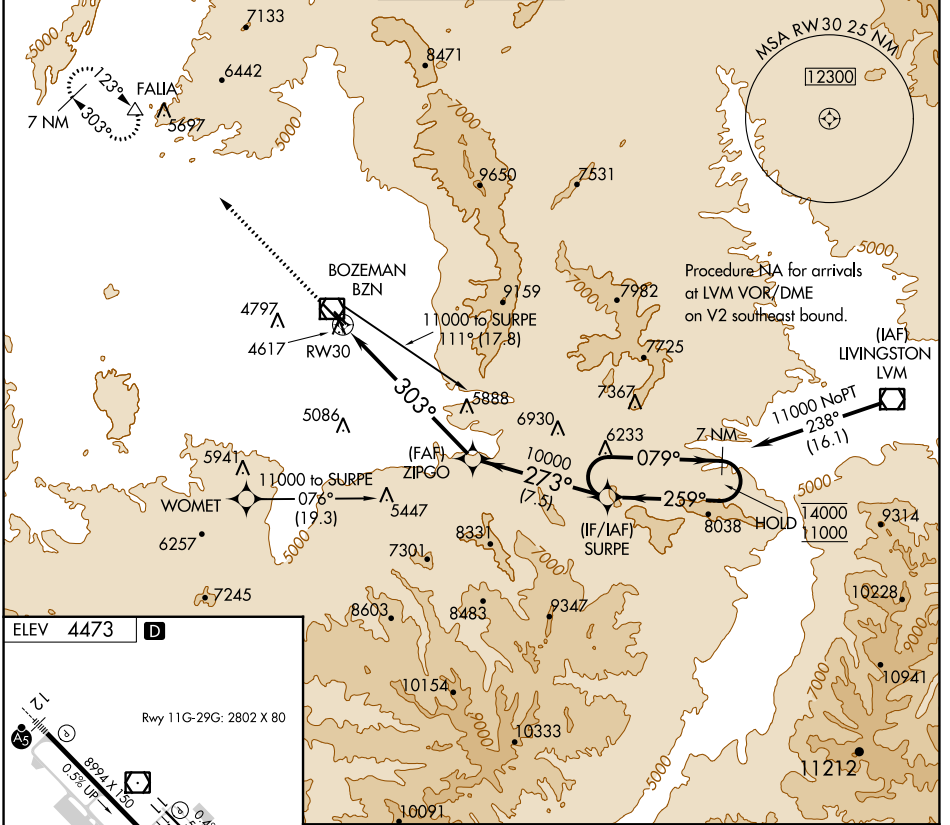
APP CRS 303°	Rwy Idg TDZE Apt Elev	N/A N/A 4473
------------------------	-----------------------------	---

RNAV (GPS)-A

BOZEMAN YELLOWSTONE INTL (BZN)

RNP APCH.	MISSED APPROACH: Climb to 10000 direct FALIA and hold, continue climb-in-hold to 10000.
<p>Circling NA to Rwy 3-21 and 11-29.</p> <p>-31°C</p>	

ATIS 135.425	BIG SKY APP CON * 118.975 226.675	BOZEMAN TOWER * 118.2 (CTAF) 0	GND CON 121.8	UNICOM 122.95
------------------------	---	--	-------------------------	-------------------------



REIL Rwy 30 0	HIRL Rwy 12-30 0	MIRL Rwy 11-29 0										
<table border="1"> <thead> <tr> <th>CATEGORY</th> <th>A</th> <th>B</th> <th>C</th> <th>D</th> </tr> </thead> <tbody> <tr> <td>C CIRCLING</td> <td>6020-1¼ 1547 (1600-1¼)</td> <td>6020-1½ 1547 (1600-1½)</td> <td>6020-3 1547 (1600-3)</td> <td>6300-3 1827 (1900-3)</td> </tr> </tbody> </table>			CATEGORY	A	B	C	D	C CIRCLING	6020-1¼ 1547 (1600-1¼)	6020-1½ 1547 (1600-1½)	6020-3 1547 (1600-3)	6300-3 1827 (1900-3)
CATEGORY	A	B	C	D								
C CIRCLING	6020-1¼ 1547 (1600-1¼)	6020-1½ 1547 (1600-1½)	6020-3 1547 (1600-3)	6300-3 1827 (1900-3)								

NW-1, 22 FEB 2024 to 21 MAR 2024

NW-1, 22 FEB 2024 to 21 MAR 2024

APP CRS 303°	Rwy Idg TDZE Apt Elev	8994 4462 4473
------------------------	-----------------------------	---

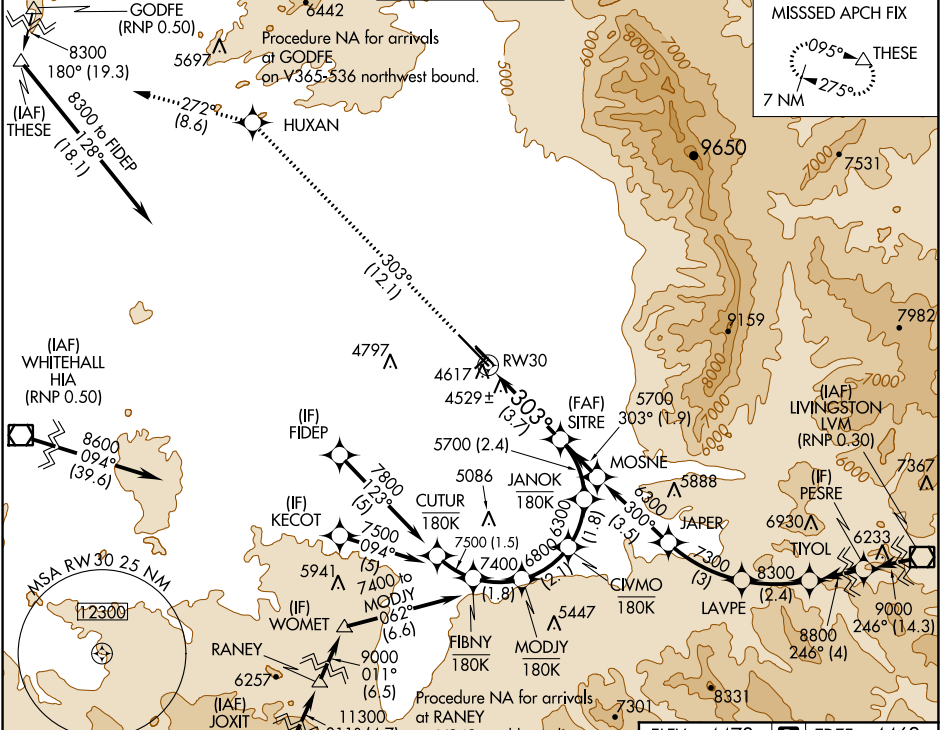
RNAV (RNP) RWY 30

BOZEMAN YELLOWSTONE INTL (BZN)

⚠ For uncompensated Baro-VNAV systems, procedure NA below -24°C (-11°F) or above 51°C (124°F). When VGSI inoperative, procedure NA at night. RF Required. GPS required. *Missed approach requires minimum climb of 350 feet per NM to 6000.

MISSED APPROACH: Climb to 8300 on track 303° to HUXAN and on track 272° to THESE and hold, continue climb-in-hold to 8300.

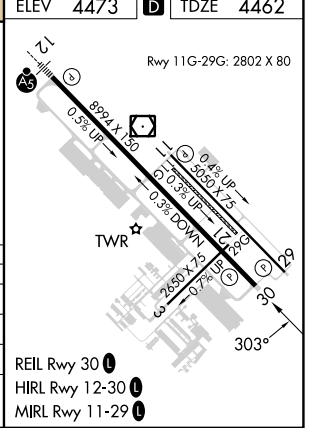
ATIS 135.425	BIG SKY APP CON * 118.975 226.675	BOZEMAN TOWER * 118.2 (CTAF) 0	GND CON 121.8	UNICOM 122.95
------------------------	---	--	-------------------------	-------------------------



NW-1, 22 FEB 2024 to 21 MAR 2024

NW-1, 22 FEB 2024 to 21 MAR 2024

8300	HUXAN	tr 272°	THESE
↑	✧		△
tr 303°			
See planview for multiple IF locations.			
CATEGORY	A	B	C
RNP 0.11* DA		4742-1	280 (300-1)
RNP 0.20 DA		4824-1 ¼	362 (400-1¼)
RNP 0.30 DA		4881-1 ½	419 (500-1½)



AUTHORIZATION REQUIRED

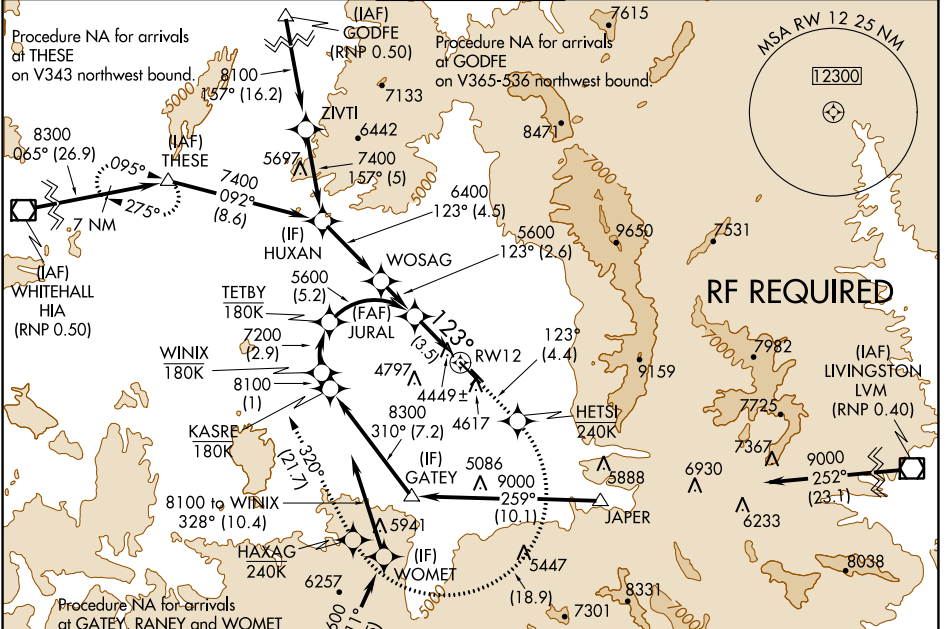
APP CRS	Rwy Idg	8994
123°	TDZE	4443
	Apt Elev	4473

RNAV (RNP) Z RWY 12

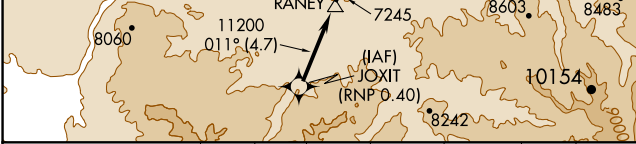
BOZEMAN YELLOWSTONE INTL (BZN)

-31°C GPS required. For uncompensated Baro-VNAV systems, procedure NA below -23°C (-11°F) or above 49°C (121°F). When VGSi inop, procedure NA at night. For inoperative MALSR increase RNP 0.30 visibility to 1% all Cats.	 MALSR	MISSED APPROACH: Climb to 8300 on track 123° to HETSI, and right turn to HAXAG, and on track 320° to THESE and hold.

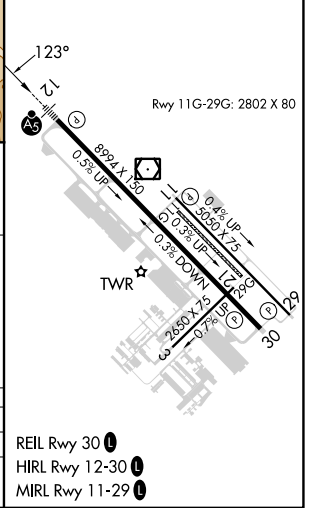
ATIS 135.425	BIG SKY APP CON ★ 118.975 226.675	BOZEMAN TOWER ★ 118.2 (CTAF)	GND CON 121.8	UNICOM 122.95
------------------------	---	--	-------------------------	-------------------------



ELEV 4473	D	TDZE 4443
-----------	----------	-----------



JURAL	8300	HETSI	HAXAG	THESE
	↑	tr 123°		tr 320°
See planview for multiple IF locations.				
5600			RW12	
		123°		
GP 3.00°				
TCH 53				
		3.5 NM		



CATEGORY	A	B	C	D
RNP 0.30 DA		4791-1	348(400-1)	
AUTHORIZATION REQUIRED				

NW-1, 22 FEB 2024 to 21 MAR 2024

NW-1, 22 FEB 2024 to 21 MAR 2024

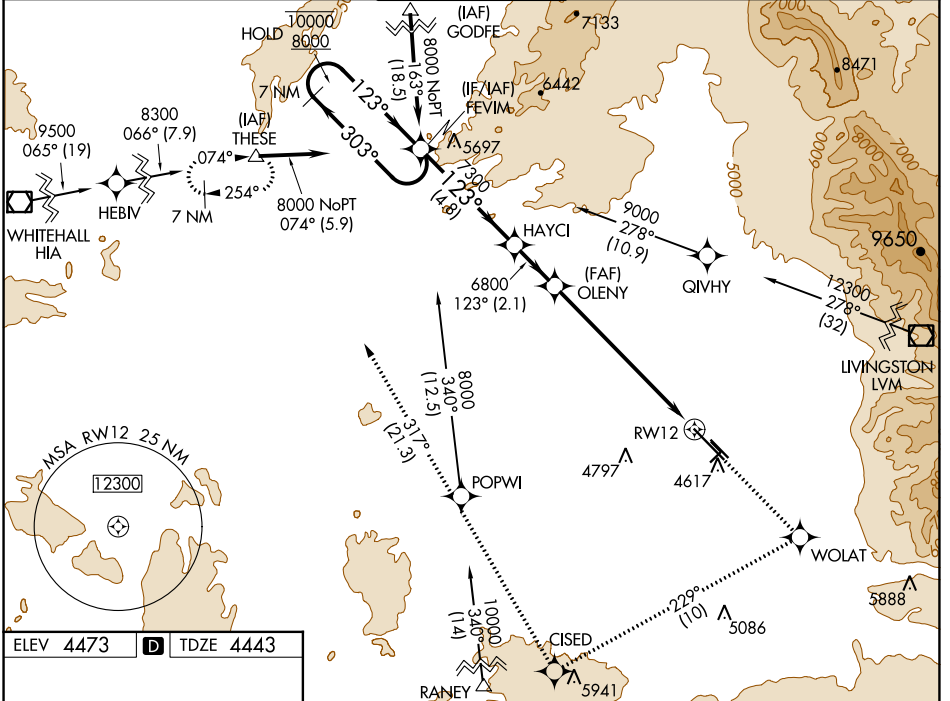
WAAS CH 72816 W12A	APP CRS 123°	Rwy Idg TDZE Apt Elev	8994 4443 4473
--	------------------------	-----------------------------	---

RNAV (GPS) Y RWY 12

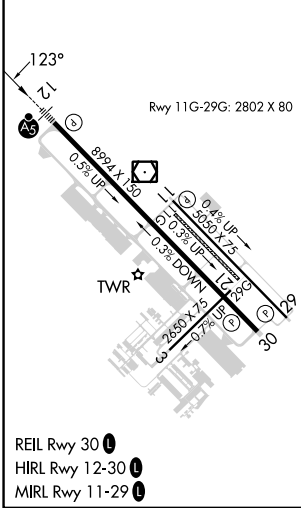
BOZEMAN YELLOWSTONE INTL (BZN)

RNP APCH.	MALSR	MISSED APPROACH: Climb to 8300 direct WOLAT and right turn on track 229° to CISED and on track 317° to THESE and hold.
<p>⚠ Circling NA to Rwys 3-21 and 11-29. For uncompensated Baro-VNAV systems, procedure NA below -23°C or above 49°C. For inop ALS, increase</p> <p>⚠ -31°C LNAV/VNAV visibility to 1 1/8 SM and LNAV visibility Cats C and D to 1 1/8 SM.</p>		

ATIS 135.425	BIG SKY APP CON* 118.975 226.675	BOZEMAN TOWER* 118.2 (CTAF) 0	GND CON 121.8	UNICOM 122.95
------------------------	--	---	-------------------------	-------------------------



ELEV 4473	D	TDZE 4443
-----------	---	-----------



	FEVIM	8300	WOLAT	CISED	THESE
	7 NM Holding Pattern	↑	✧	tr 229°	✧ tr 317°
	10000 ← 303°	HAYCI	OLENY	* LNAV only	
	8000 → 123°		6800	*1.5 NM to RWY 12	
	GP 3.00°				
	TCH 53				
		4.8 NM	2.1 NM	5.7 NM	1.5 NM
CATEGORY	A	B	C	D	
LPV DA		4693-1/2	250 (300-1/2)		
LNAV/VNAV DA		5094-1 3/4	651 (700-1 3/4)		
LNAV MDA	4960-1/2	517 (500-1/2)	4960-1 517 (500-1)	4960-1 1/4 517 (500-1 1/4)	
CIRCLING	4960-1	487 (500-1)	5160-2 687 (700-2)	5360-3 887 (900-3)	

NW-1, 22 FEB 2024 to 21 MAR 2024

NW-1, 22 FEB 2024 to 21 MAR 2024

APP CRS 318°	Rwy Idg TDZE Apt Elev	8994 4462 4473
------------------------	-----------------------------	---

RNAV (GPS) Y RWY 30

BOZEMAN YELLOWSTONE INTL (BZN)

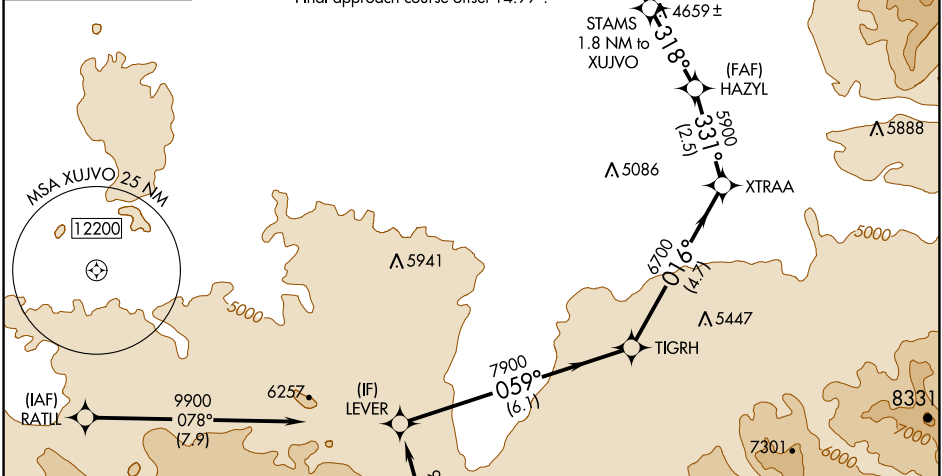
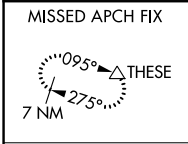
RNP APCH - GPS.

▼ For uncompensated Baro-VNAV systems, LNAV/VNAV NA below -30°C or above 54°C. Circling NA to Rwy's 3, 11, 21 and 29.

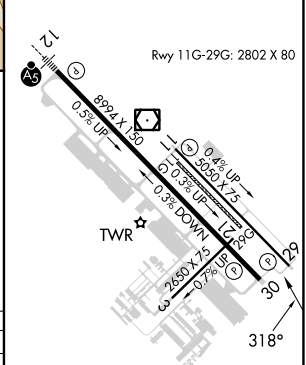
⚠ -31°C

MISSED APPROACH: Climb to 5000 then climbing left turn to 10000 direct THESE and hold, continue climb-in-hold to 10000.

ATIS 135.425	BIG SKY APP CON ★ 118.975 226.675	BOZEMAN TOWER ★ 118.2 (CTAF) 0	GND CON 121.8	UNICOM 122.95
------------------------	---	--	-------------------------	-------------------------



ELEV 4473	TDZE 4462
-----------	-----------



5000	10000	THESE
STAMS	HAZYL	XTRAA
1.8 NM to XUJVO	5900	TIGRH
1.2 NM to XUJVO	318°	LEVER
5120	5900	9900
1.2 NM	0.6	2.3 NM
		2.5 NM
		4.7 NM
		6.1 NM
		GP 3.20°
		TCH 45

CATEGORY	A	B	C	D
LNAV/VNAV	DA	4880-1 1/8	418 (500-1 1/8)	
LNAV MDA	4880-1	418 (500-1)	4880-1 1/8	418 (500-1 1/8)
CIRCLING	4940-1 467 (500-1)	4960-1 487 (500-1)	5160-2 687 (700-2)	5320-2 3/4 847 (900-2 3/4)

REIL Rwy 30	HIRL Rwy 12-30	MIRL Rwy 11-29
-------------	----------------	----------------

NW-1, 22 FEB 2024 to 21 MAR 2024

NW-1, 22 FEB 2024 to 21 MAR 2024

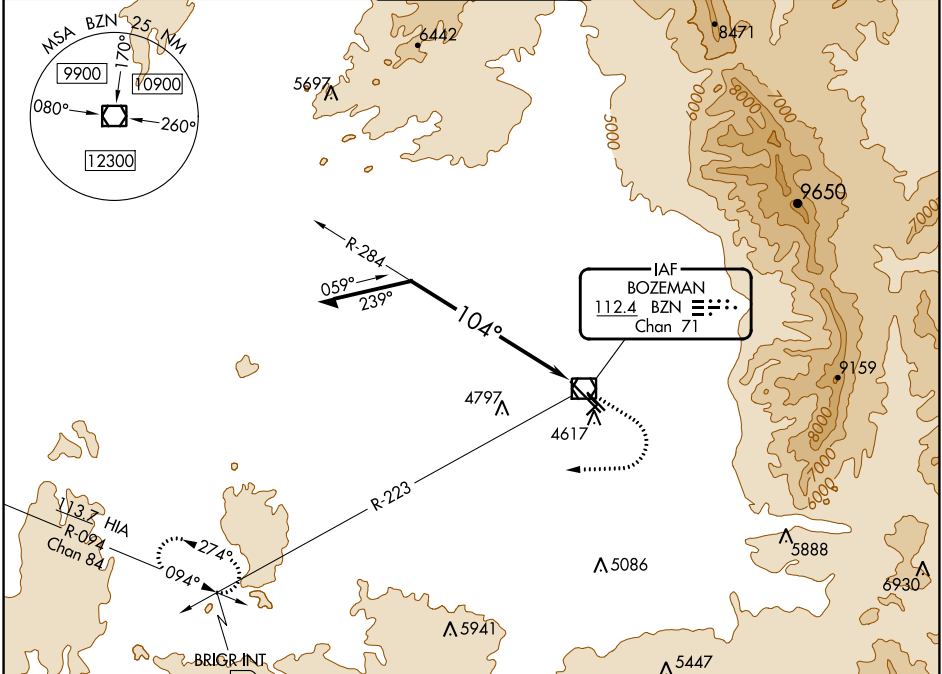
VOR/DME BZN 112.4 Chan 71	APP CRS 104°	Rwy Idg TDZE Apt Elev 8994 4443 4473
--	------------------------	--

VOR RWY 12

BOZEMAN YELLOWSTONE INTL (BZN)

	Circling NA to Rwys 3-21 and 11-29. Inop table does not apply.		MISSED APPROACH: Climb to 5500 then climbing right turn to 8000 on heading 250° and BZN VOR/DME R-223 to BRIGR INT/15 DME and hold.
--	---	--	---

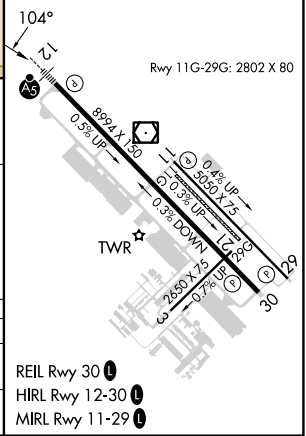
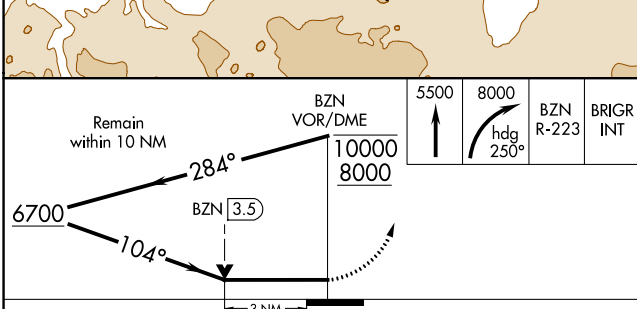
ATIS 135.425	BIG SKY APP CON* 118.975 226.675	BOZEMAN TOWER* 118.2 (CTAF) 0	GND CON 121.8	UNICOM 122.95
------------------------	--	---	-------------------------	-------------------------



NW-1, 22 FEB 2024 to 21 MAR 2024

NW-1, 22 FEB 2024 to 21 MAR 2024

ELEV 4473	TDZE 4443
-----------	-----------



CATEGORY	A	B	C	D
S-12	5440-1¼ 997 (1000-1¼)	5440-1½ 997 (1000-1½)	5440-3	997 (1000-3)
CIRCLING	5440-1¼ 967 (1000-1¼)	5440-1½ 967 (1000-1½)	5440-3	967 (1000-3)