

WAAS CH 81839 W13A	APP CRS 133°	Rwy Idg TDZE Apt Elev	5701 2948 2965
--	------------------------	-----------------------------	---

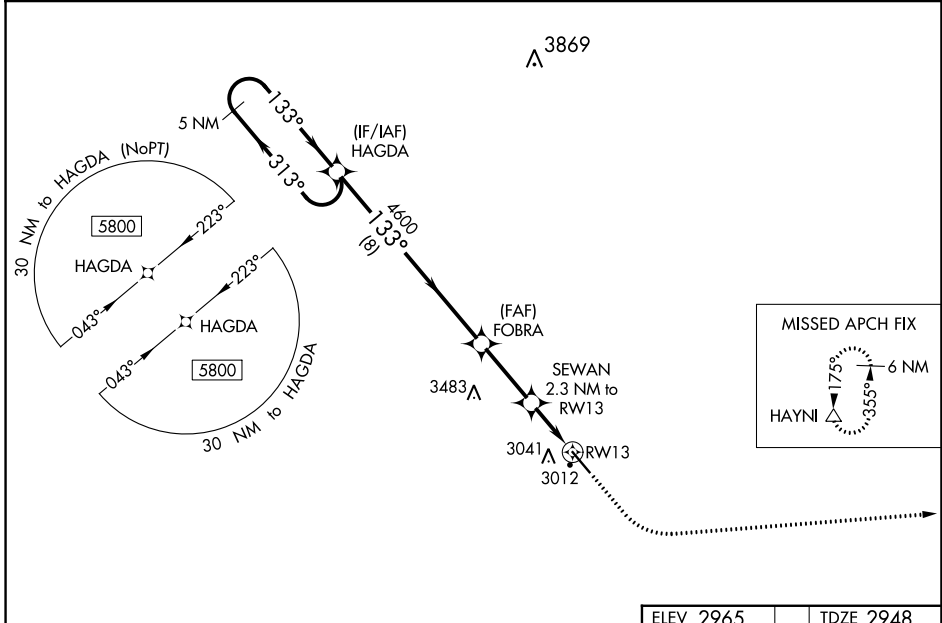
RNAV (GPS) RWY 13

BOWMAN RGNL (BWW)

⚠ For uncompensated Baro-VNAV systems, LNAV/VNAV NA below -20°C (-4°F) or above 54°C (130°F). DME/DME RNP-0.3 NA. When local altimeter setting not received, use Hetterger altimeter setting and increase all DA 102 feet, and all MDA 120 feet; increase LPV and LNAV/VNAV visibility ¼ mile all Cats, and LNAV Cat C visibility ⅓ mile. Baro-VNAV and VDP NA when using Hetterger altimeter setting.

MISSED APPROACH: Climb to 3400 then climbing left turn to 6000 direct HAYNI and hold.

AWOS-3PT 118.075	SALT LAKE CITY CENTER 126.85 305.2	UNICOM 122.8 (CTAF) 1
----------------------------	--	---------------------------------



NC-1, 22 FEB 2024 to 21 MAR 2024

NC-1, 22 FEB 2024 to 21 MAR 2024

		ELEV 2965	TDZE 2948
5 NM Holding Pattern		3400	6000 HAYNI
		*LNAV only	
CATEGORY	A	B	C
LPV DA		3198-1	250 (300-1)
LNAV/VNAV DA		3198-1	250 (300-1)
LNAV MDA		3280-1	332 (400-1)
CIRCLING	3380-1	3420-1	3580-1¾
	415 (500-1)	455 (500-1)	615 (700-1¾)
			3580-2
			615 (700-2)

REIL Rwy 13 and 31 1
MIRL Rwy 13-31 1

WAAS CH 42538 W31A	APP CRS 313°	Rwy ldg 5701 TDZE 2965 Apt Elev 2965
--	------------------------	---

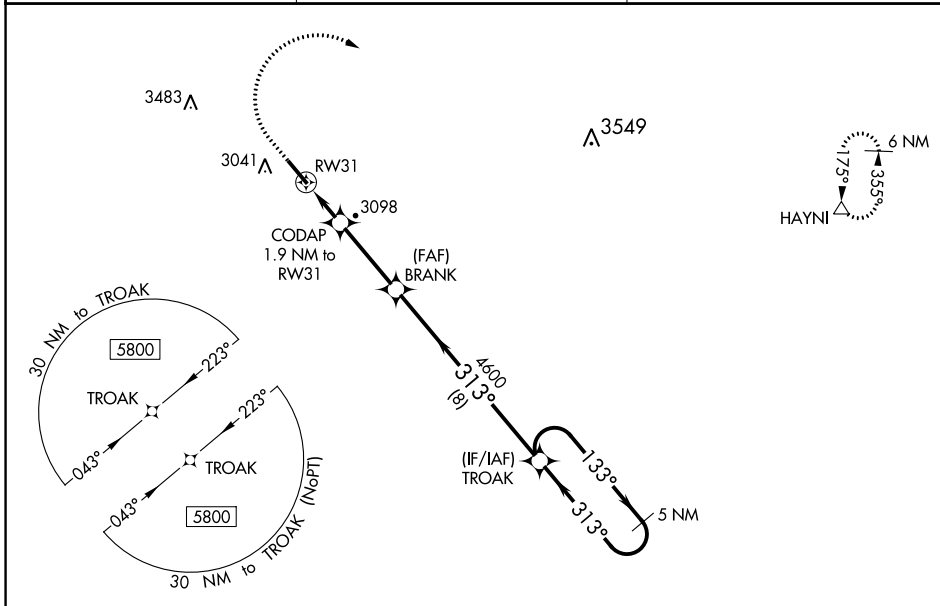
RNAV (GPS) RWY 31

BOWMAN RGNL (BWW)

⚠ For uncompensated Baro-VNAV systems, LNAV/VNAV NA below -20°C (-4°F) or above 54°C (130°F). DME/DME RNP-0.3 NA. When local altimeter setting not received, use Hettinger altimeter setting and increase all DA 102 feet, and all MDA 120 feet; increase LPV and LNAV/VNAV visibility ¼ mile all Cats, increase LNAV Cat C visibility ¼ mile. Baro-VNAV and VDP NA when using Hettinger altimeter setting.

MISSED APPROACH:
Climb to 3500 then climbing right turn to 6000 direct HAYNI and hold.

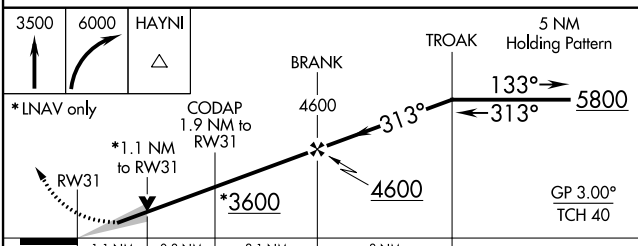
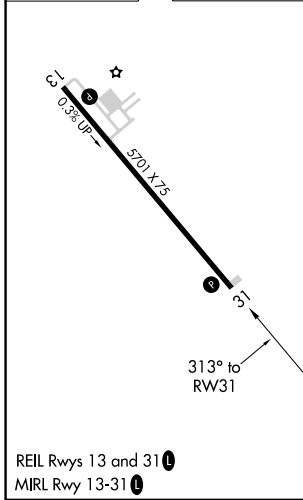
AWOS-3PT 118.075	SALT LAKE CITY CENTER 126.85 305.2	UNICOM 122.8 (CTAF)
----------------------------	--	-------------------------------



NC-1, 22 FEB 2024 to 21 MAR 2024

NC-1, 22 FEB 2024 to 21 MAR 2024

ELEV 2965	TDZE 2965
------------------	------------------



CATEGORY	A	B	C	D
LPV DA		3215-1	250 (300-1)	
LNAV/VNAV DA		3227-1	262 (300-1)	
LNAV MDA	3360-1	395 (400-1)	3360-1½	395 (400-1½)
C CIRCLING	3380-1 415 (500-1)	3420-1 455 (500-1)	3580-1¾ 615 (700-1¾)	3580-2 615 (700-2)