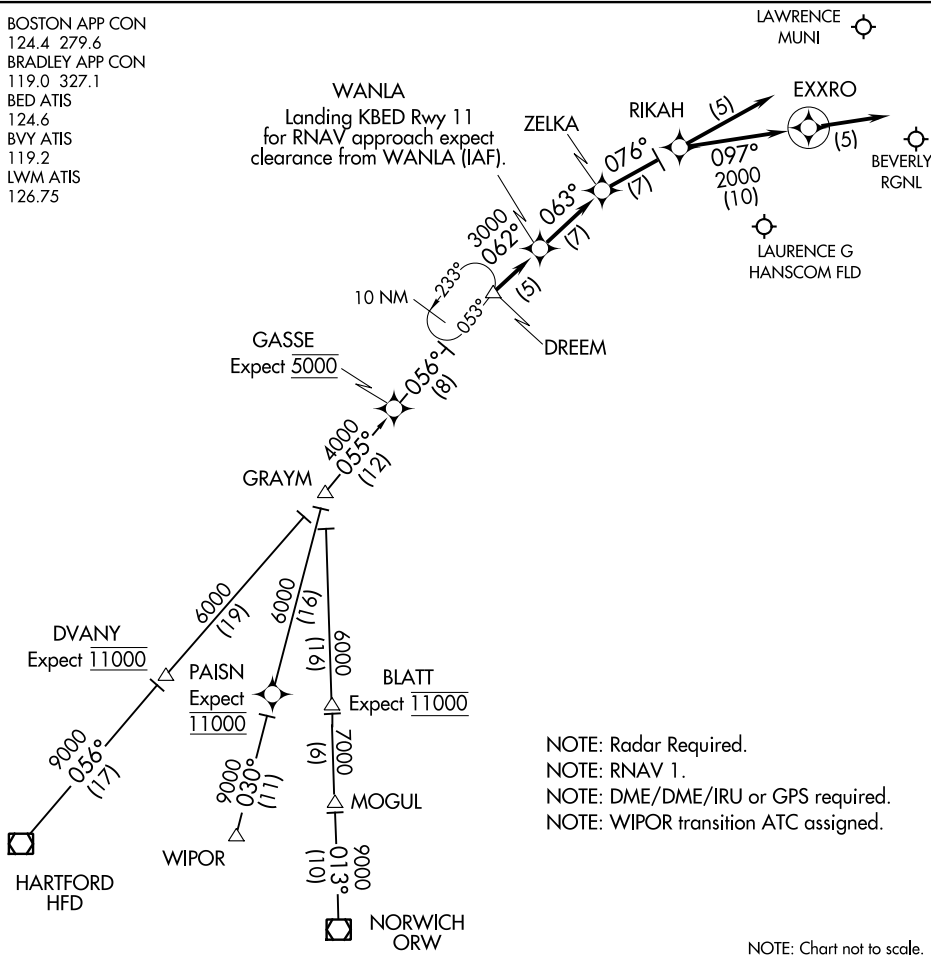


# DREEM TWO ARRIVAL (RNAV)

BEDFORD, MASSACHUSETTS

BOSTON APP CON  
124.4 279.6  
BRADLEY APP CON  
119.0 327.1  
BED ATIS  
124.6  
BVY ATIS  
119.2  
LWM ATIS  
126.75



NOTE: Radar Required.  
NOTE: RNAV 1.  
NOTE: DME/DME/IRU or GPS required.  
NOTE: WIPOR transition ATC assigned.

NOTE: Chart not to scale.

HARTFORD TRANSITION (HFD.DREEM2):  
NORWICH TRANSITION (ORW.DREEM2):  
WIPOR TRANSITION (WIPOR.DREEM2):

LANDING BVY ALL RWYS, BED RWY 23 & 29: From DREEM on track 062° to WANLA , then on track 063° to ZELKA, then on track 076° to RIKAH, then on track 097° to EXXRO, then on track 097°. Expect radar vectors to destination airport and final approach course.  
LANDING BED RWY 11: From DREEM on track 062° to WANLA, then on track 063° to ZELKA. Expect ILS approach.  
LANDING LWM ALL RWYS: From DREEM on track 062° to WANLA, then on track 063° to ZELKA, then on track 076° to RIKAH, then on track 076°, expect radar vectors to final approach course.

# DREEM TWO ARRIVAL (RNAV)

BEDFORD, MASSACHUSETTS

NE-1, 17 JUN 2021 to 15 JUL 2021

NE-1, 17 JUN 2021 to 15 JUL 2021

(GRAYM.GRAYM6) 21112  
**GRAYM SIX ARRIVAL**

AL-626 (FAA)

BEDFORD, MASSACHUSETTS

BOSTON APP CON  
 124.4 279.6  
 BRADLEY APP CON  
 119.0 327.1  
 BED ATIS  
 124.6  
 BVY ATIS  
 119.2  
 LWM ATIS  
 126.75

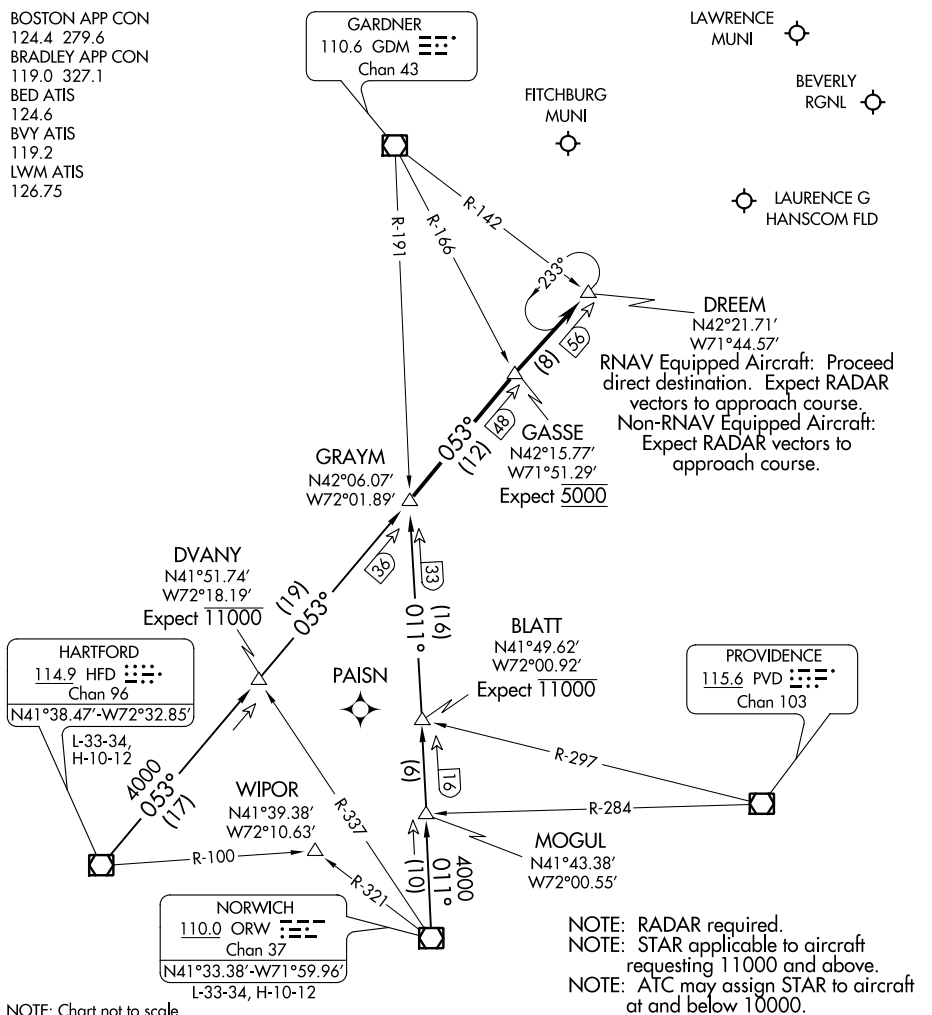
GARDNER  
 110.6 GDM  
 Chan 43

LAWRENCE MUNI

BEVERLY RGNL

FITCHBURG MUNI

LAURENCE G HANSCOM FLD



NE-1, 17 JUN 2021 to 15 JUL 2021

NE-1, 17 JUN 2021 to 15 JUL 2021

NOTE: Chart not to scale.

NOTE: RADAR required.  
 NOTE: STAR applicable to aircraft requesting 11000 and above.  
 NOTE: ATC may assign STAR to aircraft at and below 10000.

**ARRIVAL ROUTE DESCRIPTION**

**HARTFORD TRANSITION (HFD.GRAYM6):** From over HFD VOR/DME on HFD R-053 to GRAYM. Thence. . . .  
**NORWICH TRANSITION (ORW.GRAYM6):** From over ORW VOR/DME on ORW R-011 to GRAYM. Thence. . . .  
 . . . . From over GRAYM on HFD R-053 to GASSE, then to DREAM, at DREAM:  
**RNAV EQUIPPED AIRCRAFT:** Proceed direct destination expect radar vectors to approach course.  
**NON-RNAV EQUIPPED AIRCRAFT:** Expect radar vectors to approach course.

**GRAYM SIX ARRIVAL**  
 (GRAYM.GRAYM6) 08NOV18

BEDFORD, MASSACHUSETTS

BOSTON APP CON  
124.4 279.6  
BED ATIS  
124.6  
BVY ATIS  
119.2  
LWM ATIS  
126.75



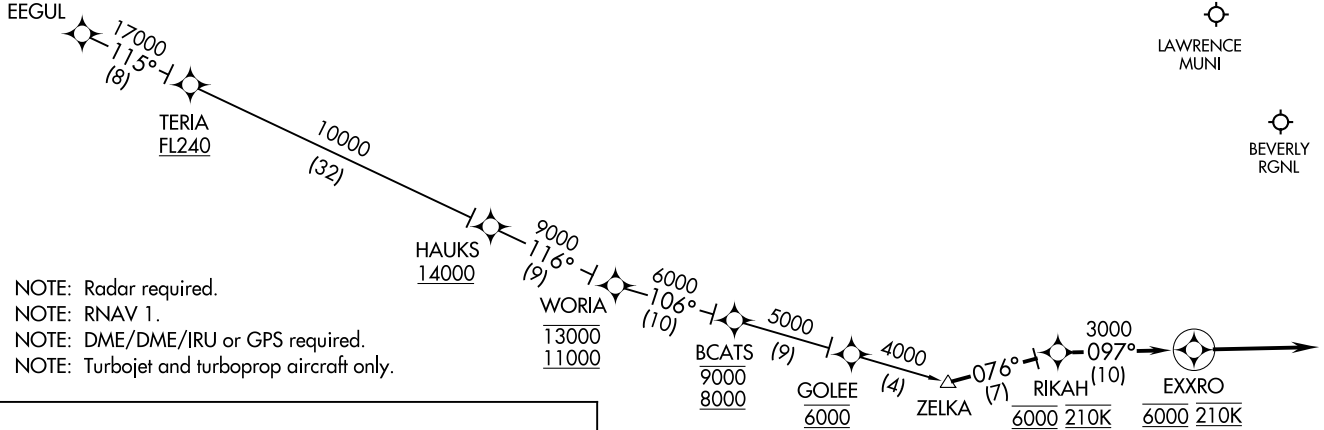
LAWRENCE MUNI



BEVERLY RGNL



LAURENCE G HANSCOM FLD



- NOTE: Radar required.
- NOTE: RNAV 1.
- NOTE: DME/DME/IRU or GPS required.
- NOTE: Turbojet and turboprop aircraft only.

ARRIVAL ROUTE DESCRIPTION

EEGUL TRANSITION (EEGUL.ZELKA2):

From ZELKA on track 076° to cross RIKAH at 6000 and 210K, then on track 097° to cross EXXRO at 6000 and at 210K, then on track 097°. Expect radar vectors to destination airport and final approach course.



NOTE: Chart not to scale.