

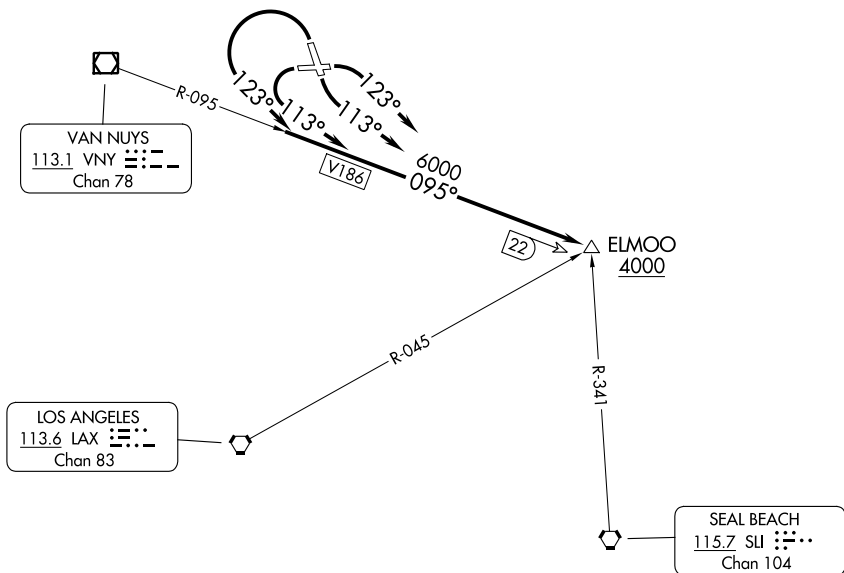
(ELMOO9.ELMOO) 23334  
**ELMOO NINE DEPARTURE**

AL-67 (FAA)

BOB HOPE (BUR)  
 BURBANK, CALIFORNIA

SOCAL DEP CON  
 135.05 317.5  
 CLNC DEL  
 118.0 348.6  
 CPDLC

**TOP ALTITUDE:  
 ASSIGNED BY ATC**



**TAKEOFF MINIMUMS**

- Rwy 8: Standard with minimum climb of 380' per NM to 2500.
- Rwy 15: Standard with minimum climb of 450' per NM to 3000.
- Rwy 26: Standard with minimum climb of 305' per NM to 2600.
- Rwy 33: 600-2¼ with minimum climb of 210' per NM to 4000  
 or standard with minimum climb of 450' per NM to 2600.

NOTE: Chart not to scale.

**DEPARTURE ROUTE DESCRIPTION**

- TAKEOFF RUNWAY 8: Climbing right turn heading 123° intercept VNY VOR/DME R-095 to ELMOO. . . .
- TAKEOFF RUNWAY 15: Climbing left turn heading 113° intercept VNY VOR/DME R-095 to ELMOO. . . .
- TAKEOFF RUNWAY 26: Climbing left turn heading 113° intercept VNY VOR/DME R-095 to ELMOO. . . .
- TAKEOFF RUNWAY 33: Climbing left turn heading 123° intercept VNY VOR/DME R-095 to ELMOO. . . .

. . . .thence via assigned route. Maintain ATC assigned altitude.

**ELMOO NINE DEPARTURE**  
 (ELMOO9.ELMOO) 25APR19

BURBANK, CALIFORNIA  
 BOB HOPE (BUR)

SW-3, 22 FEB 2024 to 21 MAR 2024

SW-3, 22 FEB 2024 to 21 MAR 2024

(OROSZ2.OROSZ) 18032

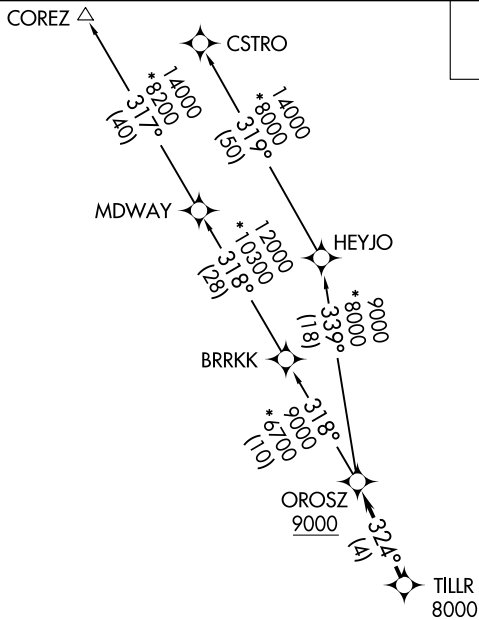
# OROSZ TWO DEPARTURE (RNAV)

AL-67 (FAA)

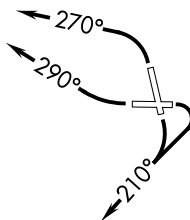
BOB HOPE (BUR)  
BURBANK, CALIFORNIA

**TOP ALTITUDE:  
FL230**

CLNC DEL  
118.0 348.6  
CPDLC  
SOCAL DEP CON  
124.6 298.85



NOTE: DME/DME/IRU or GPS required.  
 NOTE: RNAV 1.  
 NOTE: RADAR required.  
 NOTE: Maintain at or below 250K unless otherwise directed by ATC.



### TAKEOFF MINIMUMS

- Rwy 8: Standard with minimum climb of 420' per NM to 2500.
- Rwy 15: Standard with minimum climb of 340' per NM to 2100.
- Rwy 26: Standard with minimum climb of 380' per NM to 4800.
- Rwy 33: Standard with minimum climb of 460' per NM to 4900.

NOTE: Chart not to scale.



### DEPARTURE ROUTE DESCRIPTION

TAKEOFF RUNWAYS 8, 15: Climbing right turn heading 210° or as assigned by ATC, expect vectors to cross TILLR at or above 8000, then on track 324° to cross OROSZ at or above 9000, thence. . .

TAKEOFF RUNWAY 26: Climbing right turn heading 290° or as assigned by ATC, expect vectors to cross TILLR at or above 8000, then on track 324° to cross OROSZ at or above 9000, thence. . .

TAKEOFF RUNWAY 33: Climbing left turn heading 270° or as assigned by ATC, expect vectors to cross TILLR at or above 8000, then on track 324° to cross OROSZ at or above 9000, thence. . .

. . . on (transition) maintain FL230. Expect filed altitude 10 minutes after departure.

COREZ TRANSITION (OROSZ2.COREZ)

CSTRO TRANSITION (OROSZ2.CSTRO)

# OROSZ TWO DEPARTURE (RNAV)

(OROSZ2.OROSZ) 01FEB18

BURBANK, CALIFORNIA  
BOB HOPE (BUR)

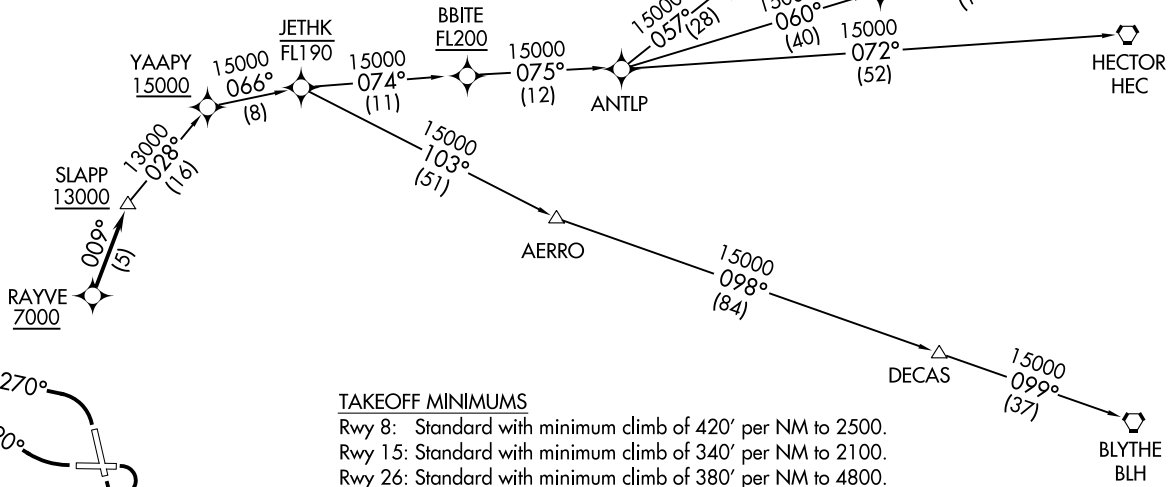
SW-3, 22 FEB 2024 to 21 MAR 2024

SW-3, 22 FEB 2024 to 21 MAR 2024

**TOP ALTITUDE:  
FL230**

CLNC DEL  
118.0 348.6  
CPDLC  
SOCAL DEP CON  
124.6 298.85

- NOTE: DME/DME/IRU or GPS required.
- NOTE: RNAV 1.
- NOTE: RADAR required.
- NOTE: Turbojet only.
- NOTE: MISEN transition restricted to aircraft landing LAS terminal area.
- NOTE: HAILO transition ATC assigned only.



TAKEOFF MINIMUMS

- Rwy 8: Standard with minimum climb of 420' per NM to 2500.
- Rwy 15: Standard with minimum climb of 340' per NM to 2100.
- Rwy 26: Standard with minimum climb of 380' per NM to 4800.
- Rwy 33: Standard with minimum climb of 460' per NM to 4900.

(NARRATIVE ON FOLLOWING PAGE)

NOTE: Chart not to scale.

SLAPP TWO DEPARTURE (RNAV)  
(SLAPP2.SLAPP) 10SEP20

BURBANK, CALIFORNIA  
BOB HOPE (BUTR)

(SLAPP2.SLAPP) 20254  
SLAPP TWO DEPARTURE (RNAV)

AL-67 (FAA)

BOB HOPE (BUTR)  
BURBANK, CALIFORNIA



DEPARTURE ROUTE DESCRIPTION

TAKEOFF RUNWAY 8: Climbing right turn to heading 210°, expect vectors to RAYVE, then on track 009° to cross SLAPP at or above 13000, thence. . . .

TAKEOFF RUNWAY 15: Climbing right turn to heading 210°, or as assigned by ATC, expect vectors to RAYVE, then on track 009° to cross SLAPP at or above 13000, thence. . . .

TAKEOFF RUNWAY 26: Climbing right turn to heading 290°, expect vectors to RAYVE, then on track 009° to cross SLAPP at or above 13000, thence. . . .

TAKEOFF RUNWAY 33: Climbing left turn to heading 270°, expect vectors to RAYVE, then on track 009° to cross SLAPP at or above 13000, thence. . . .

. . . .on (transition) maintain FL230. Expect filed altitude 10 minutes after departure.

BLYTHE TRANSITION (SLAPP2.BLH)

HAILO TRANSITION (SLAPP2.HAILO)

HECTOR TRANSITION (SLAPP2.HEC)

LAS VEGAS TRANSITION (SLAPP2.LAS)

MISEN TRANSITION (SLAPP2.MISEN)

SW-3, 22 FEB 2024 to 21 MAR 2024

SW-3, 22 FEB 2024 to 21 MAR 2024

VAN NUYS THREE DEPARTURE  
(VNY3.VNY) 26MAY16

VAN NUYS THREE DEPARTURE  
(VNY3.VNY) 23334

AL-67 (FAAN)

BOB HOPE (BTR)  
BURBANK, CALIFORNIA

**TOP ALTITUDE:  
ASSIGNED BY ATC**

SOCAL DEP CON  
124.6 298.85  
CLNC DEL  
118.0 348.6  
CPDLC

EDWARDS  
116.4 EDW  
Chan 111

COREZ  
4000  
266°  
(25)

AVENAL  
117.1 AVE  
Chan 118

GORMAN  
116.1 GMN  
Chan 108

LAKE HUGHES  
114.35 LHS  
Chan 90(Y)

PALMDALE  
115.55 PMD  
Chan 102(Y)

DAGGETT  
113.2 DAG  
Chan 79

FILLMORE  
112.5 FIM  
Chan 72

CASTA  
8300

VICTORVILLE  
109.05 VCV  
Chan 27(Y)

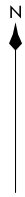
SUANA  
3700

LANGE

VAN NUYS  
113.1 VNY  
Chan 78

VENTURA  
116.55 VTU  
Chan 112(Y)

LOS ANGELES  
113.6 LAX  
Chan 83



NOTE: RADAR required

**TAKEOFF MINIMUMS**

- Rwy 8: Standard with minimum climb of 410' per NM to 2500.
- Rwy 15: Standard with minimum climb of 335' per NM to 2300.
- Rwy 26: Standard with minimum climb of 305' per NM to 5000.
- Rwy 33: Standard with minimum climb of 550' per NM to 5000, or 600-2¼ with minimum climb of 300' per NM to 5000.

NOTE: Chart not to scale.

(CONTINUED ON FOLLOWING PAGE)



DEPARTURE ROUTE DESCRIPTION

TAKEOFF RUNWAY 8: Climbing right turn heading 213° . . . .

TAKEOFF RUNWAY 15: Climbing right turn heading 213° . . . .

TAKEOFF RUNWAY 26: Climbing right turn heading 293° . . . .

TAKEOFF RUNWAY 33: Climbing left turn heading 273° . . . .

. . . .expect RADAR vector to VNY VOR/DME. Thence via (transition) or (assigned route).

AVENAL TRANSITION (VNY3.AVE): From over VNY VOR/DME on VNY R-255 and LAX R-323 to TWINE, then on LAX R-323 and GMN R-142 to GMN VORTAC, then on GMN R-310 and AVE R-086 to AVE VOR/DME.

DAGGETT TRANSITION (VNY3.DAG): From over VNY VOR/DME on VNY R-255 and LAX R-323 to TWINE, then on VTU R-046 and PMD R-218 to PMD VORTAC, then on PMD R-067 and DAG R-238 to DAG VORTAC.

FILLMORE TRANSITION (VNY3.FIM): From over VNY VOR/DME on VNY R-255 and FIM R-120 to FIM VORTAC.

GORMAN TRANSITION (VNY3.GMN): From over VNY VOR/DME on VNY R-255 and LAX R-323 to TWINE, then on LAX R-323 and GMN R-142 to GMN VORTAC.

PALMDALE TRANSITION (VNY3.PMD): From over VNY VOR/DME on VNY R-255 and LAX R-323 to TWINE, then on VTU R-046 and PMD R-218 to PMD VORTAC.

TWINE TRANSITION (VNY3.TWINE): From over VNY VOR/DME on VNY R-255 and LAX R-323 to TWINE.

SW-3, 22 FEB 2024 to 21 MAR 2024

SW-3, 22 FEB 2024 to 21 MAR 2024

VERA TWO DEPARTURE (RNAV)  
(VERA2.VERA) 120CT17

SOCAL DEP CON  
124.6 298.85  
CLNC DEL  
118.0 348.6  
CPDLC

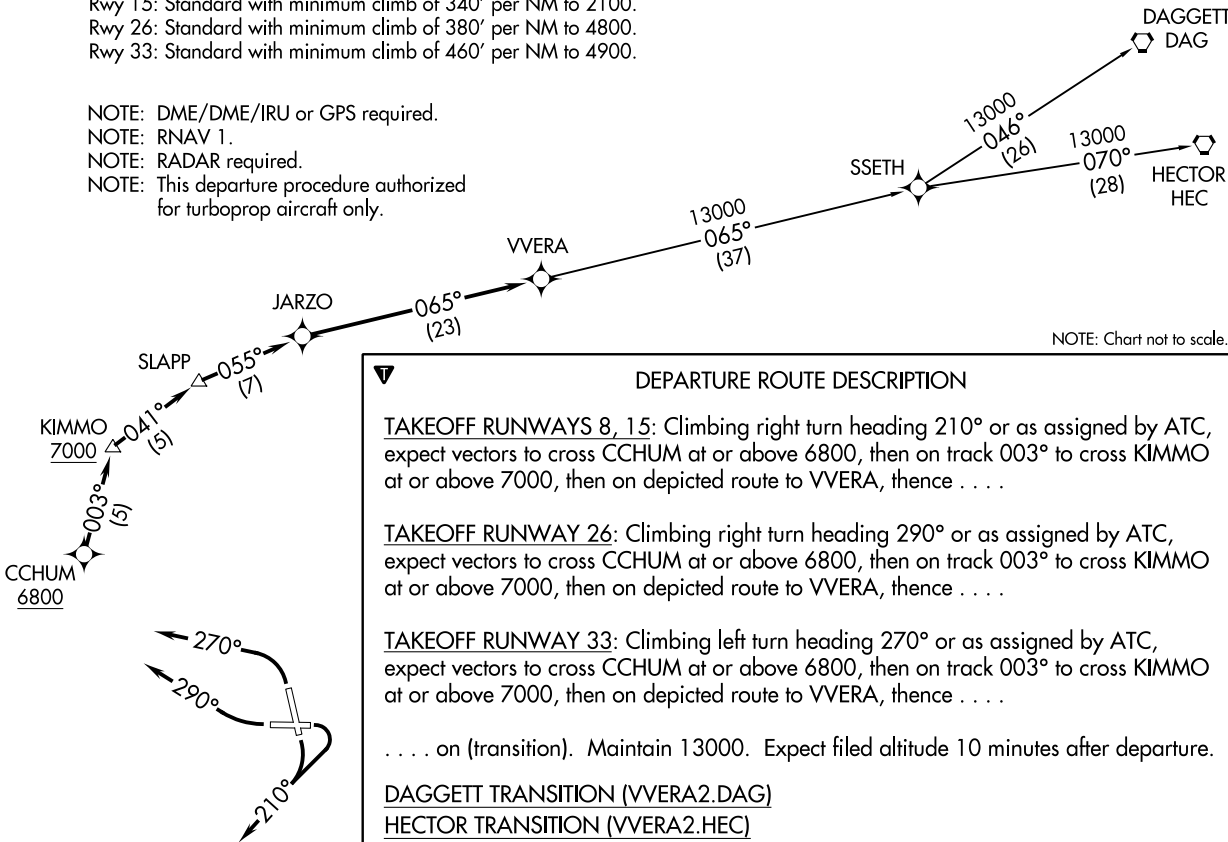
**TAKEOFF MINIMUMS**

- Rwy 8: Standard with minimum climb of 420' per NM to 2500.
- Rwy 15: Standard with minimum climb of 340' per NM to 2100.
- Rwy 26: Standard with minimum climb of 380' per NM to 4800.
- Rwy 33: Standard with minimum climb of 460' per NM to 4900.

- NOTE: DME/DME/IRU or GPS required.
- NOTE: RNAV 1.
- NOTE: RADAR required.
- NOTE: This departure procedure authorized for turboprop aircraft only.



**TOP ALTITUDE:  
13000**



NOTE: Chart not to scale.

**DEPARTURE ROUTE DESCRIPTION**

TAKEOFF RUNWAYS 8, 15: Climbing right turn heading 210° or as assigned by ATC, expect vectors to cross CCHUM at or above 6800, then on track 003° to cross KIMMO at or above 7000, then on depicted route to VVERA, thence . . . .

TAKEOFF RUNWAY 26: Climbing right turn heading 290° or as assigned by ATC, expect vectors to cross CCHUM at or above 6800, then on track 003° to cross KIMMO at or above 7000, then on depicted route to VVERA, thence . . . .

TAKEOFF RUNWAY 33: Climbing left turn heading 270° or as assigned by ATC, expect vectors to cross CCHUM at or above 6800, then on track 003° to cross KIMMO at or above 7000, then on depicted route to VVERA, thence . . . .

. . . . on (transition). Maintain 13000. Expect filed altitude 10 minutes after departure.

DAGGETT TRANSITION (VERA2.DAG)

HECTOR TRANSITION (VERA2.HEC)

(VERA2.VERA) 17285  
VERA TWO DEPARTURE (RNAV)

AL-67 (FAA)

BOB HOPE (BUTR)  
BURBANK, CALIFORNIA

BURBANK, CALIFORNIA  
BOB HOPE (BUTR)