

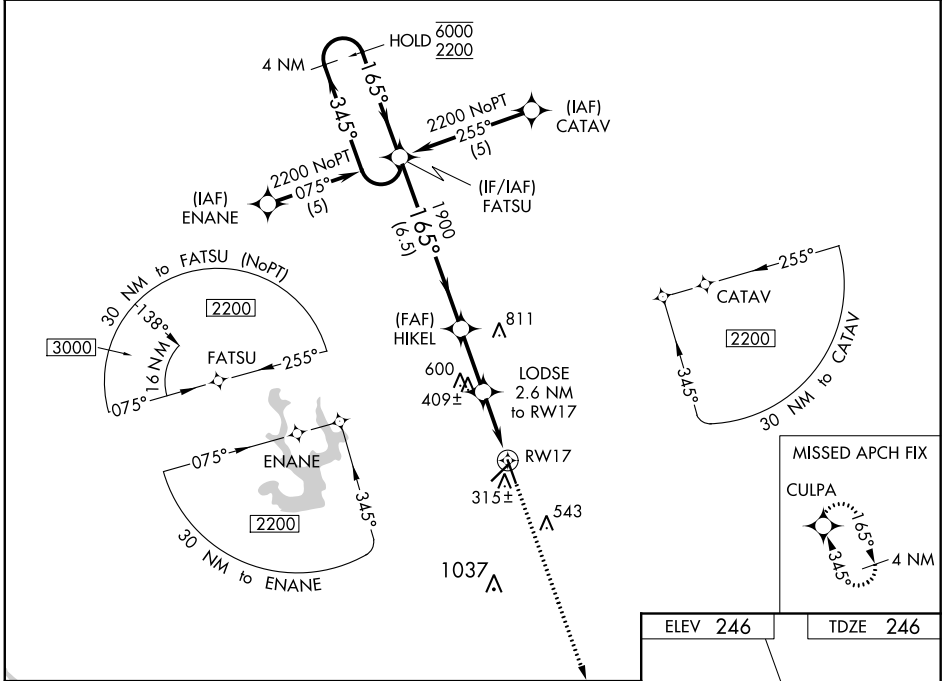
WAAS CH <b>90418</b> <b>W17A</b>	APP CRS <b>165°</b>	Rwy Idg TDZE Apt Elev	<b>5119</b> <b>246</b> <b>246</b>
--	------------------------	-----------------------------	---

# RNAV (GPS) RWY 17

BARNWELL RGNL (BNL)

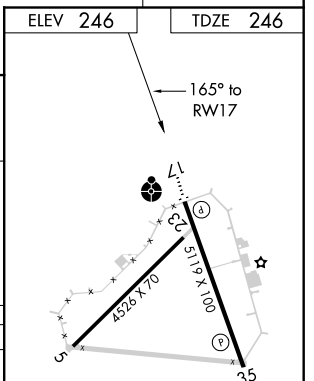
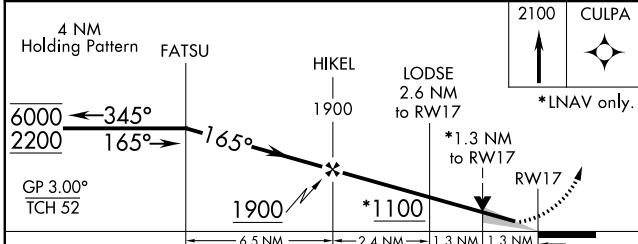
RNP APCH.	ODALS	MISSED APPROACH: Climb to 2100 direct CULPA and hold.
<p>⚠ Circling Rwy 5, 23 NA at night. Inop table does not apply to LPV, LNAV/VNAV all Cats, and LNAV Cat C. For uncompensated Baro-VNAV systems, LNAV/VNAV NA below -15°C or above 54°C.</p>		

AWOS-3 <b>119.775</b>	JACKSONVILLE CENTER <b>132.925 363.2</b>	GCO <b>121.725</b>	UNICOM <b>122.8</b> (CTAF) <b>📻</b>
--------------------------	---	-----------------------	--



SE-2, 11 AUG 2022 to 08 SEP 2022

SE-2, 11 AUG 2022 to 08 SEP 2022



CATEGORY	A	B	C	D
LPV DA	496-3/4 250 (300-3/4)			
LNAV/VNAV DA	604-1 358 (400-1 1/4)			
LNAV MDA	700-3/4 454 (500-3/4)	700-1 454 (500-1 1/4)	700-1 1/2 454 (500-1 1/2)	
CIRCLING	700-1 454 (500-1)	900-1 654 (700-1 1/4)	900-2 654 (700-2)	

REIL Rwy 17  
MIRL Rwy 17-35 **📻**

APP CRS <b>345°</b>	Rwy Idg TDZE Apt Elev	<b>5119</b> <b>246</b> <b>246</b>
------------------------	-----------------------------	---

# RNAV (GPS) RWY 35

BARNWELL RGNL (BNL)

**▽** **▲** NA  
 DME/DME RNP-0.3 NA. Visibility reduction by helicopters NA. When local altimeter setting not received, use Augusta Rgnl at Bush Fld altimeter setting and increase all MDAs 100 feet and increase LNAV Cat C/D visibilities ¼ mile, Circling Cat C visibility ¼ mile and Cat D visibility ½ mile. VDP NA when using Augusta Rgnl at Bush Fld altimeter setting.

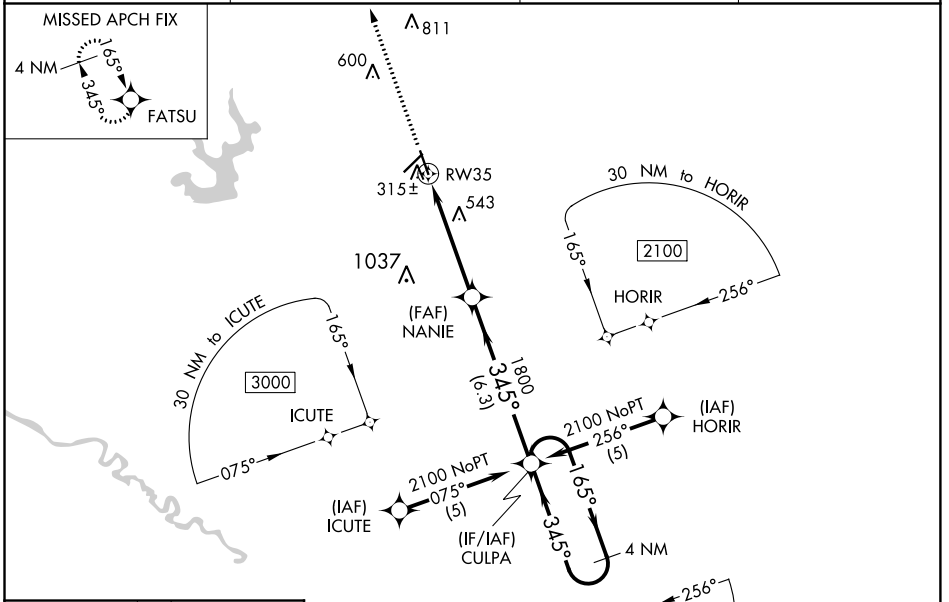
MISSED APPROACH: Climb to 2200 direct FATSU and hold.

AWOS-3  
**119.775**

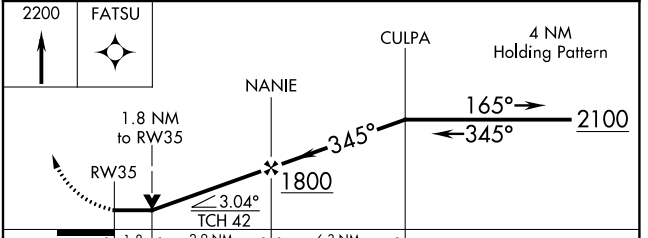
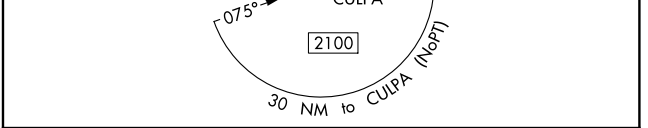
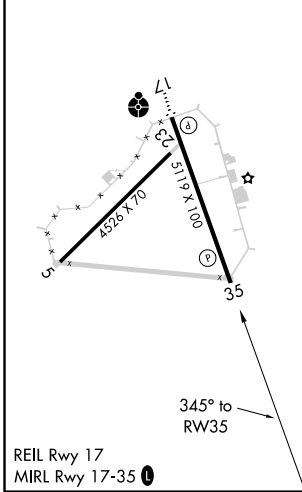
JACKSONVILLE CENTER  
**132.925 363.2**

GCO  
**121.725**

UNICOM  
**122.8 (CTAF) 0**



ELEV **246** | TDZE **246**



CATEGORY	A	B	C	D
LNAV MDA	860-1	614 (700-1)	860-1¾ 614 (700-1¾)	860-2 614 (700-2)
CIRCLING	860-1	614 (700-1)	900-1¾ 654 (700-1¾)	900-2 654 (700-2)

SE-2, 11 AUG 2022 to 08 SEP 2022

SE-2, 11 AUG 2022 to 08 SEP 2022