

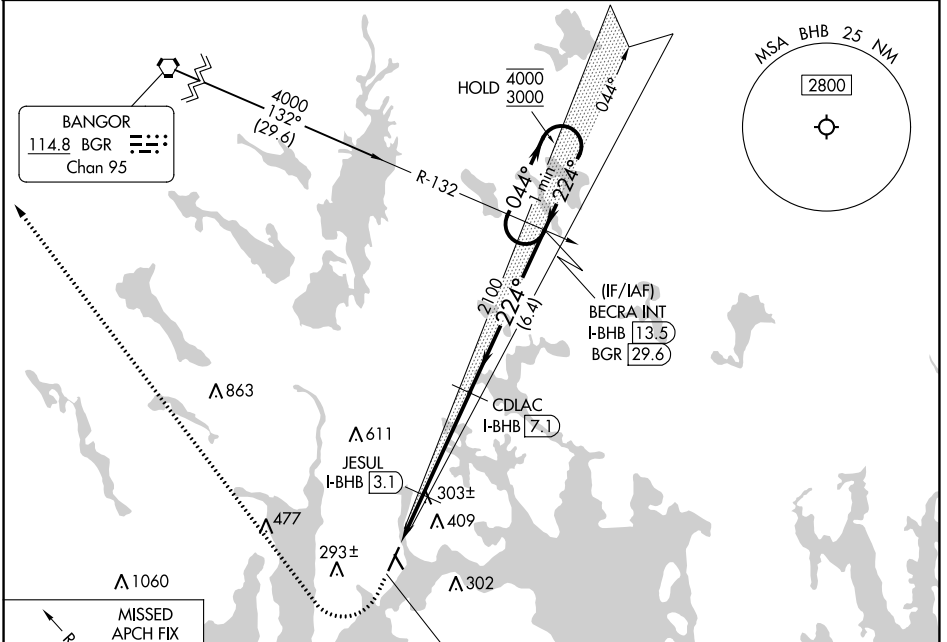
LOC/DME I-BHB 108.3 Chan 20	APP CRS 224°	Rwy ldg 5200 TDZE 83 Apt Elev 83
---	------------------------	---

ILS or LOC RWY 22

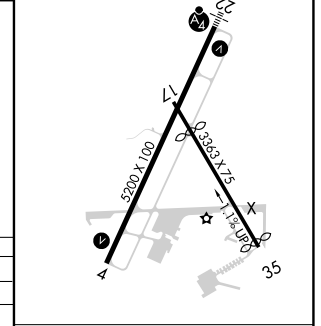
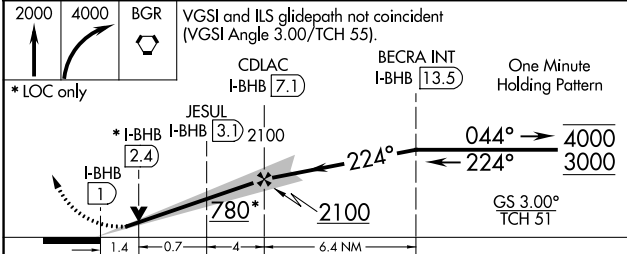
HANCOCK COUNTY/BAR HARBOR (BHB)

DME required.	MALSF	MISSED APPROACH: Climb to 2000 then climbing right turn to 4000 direct BGR VORTAC and hold.
<p>▼ Circling Rwy 17, 35 NA at night. ▲ For inop ALS, increase S-LOC Cat C visibility to 1 3/8 SM. Autopilot coupled approach NA below 900 feet MSL.</p>		

AWOS-3PT 118.35	BANGOR APP CON 133.6 284.65	CLNC DEL 119.9	UNICOM 123.0 (CTAF)	122.7 0
---------------------------	---------------------------------------	--------------------------	-------------------------------	-----------------------



ELEV 83	TDZE 83
REIL Rwy 4 0	HIRL Rwy 4-22 0



CATEGORY	A	B	C	D
S-ILS 22	283-3/4 200 (200-3/4)			
S-LOC 22	580-3/4 497 (500-3/4)	580-1 1/4 497 (500-1 1/2)	580-1 1/2 497 (500-1 1/2)	580-1 1/2 497 (500-1 1/2)
CIRCLING	600-1 517 (600-1)	720-1 637 (700-1)	720-1 3/4 637 (700-1 3/4)	840-2 1/2 757 (800-2 1/2)

FAF to MAP 6.1 NM					
Knots	60	90	120	150	180
Min:Sec	6:06	4:04	3:03	2:26	2:02

NE-1, 22 FEB 2024 to 21 MAR 2024

NE-1, 22 FEB 2024 to 21 MAR 2024

WAAS CH 86305 W22A	APP CRS 224°	Rwy Idg TDZE Apt Elev	5200 83 83
--	------------------------	-----------------------------	---------------------------------------

RNAV (GPS) RWY 22

HANCOCK COUNTY/BAR HARBOR (BHB)

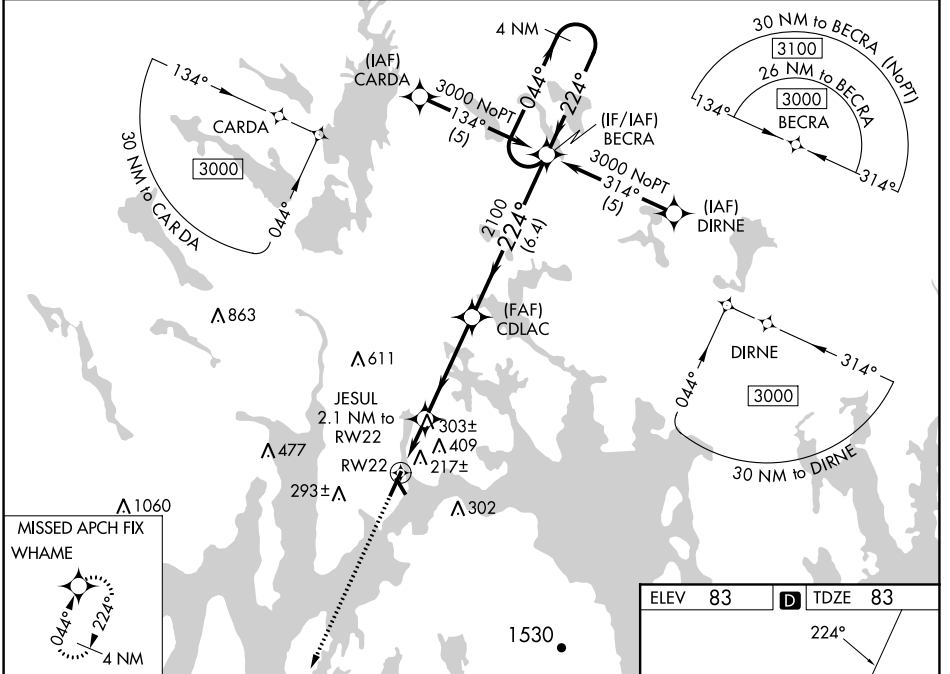
RNP APCH - GPS.

⚠ Baro-VNAV NA when using Bangor altimeter setting. When local altimeter setting not received, use Bangor altimeter setting and increase LPV DA to 366 feet; increase LNAV/VNAV DA to 780 feet and all visibilities ¼ SM. Increase all MDAs 100 feet and LNAV visibility Cats C/D, and Circling visibility Cats C/D ¼ SM. When using Bangor altimeter setting, inop table does not apply to LNAV/VNAV all Cats and LNAV Cat C. For uncompensated Baro-VNAV systems, LNAV/VNAV NA below -15°C or above 49°C. Circling Rwy 17, 35 NA at night.

MALSIF

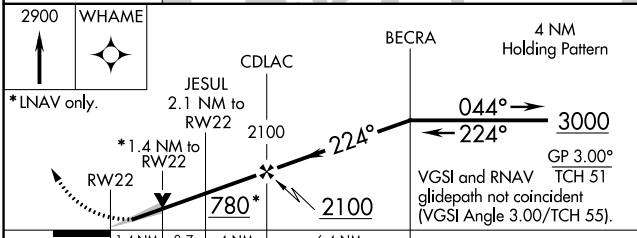
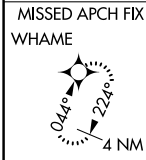
MISSED APPROACH:
Climb to 2900 direct WHAME and hold.

AWOS-3PT 118.35	BANGOR APP CON 133.6 284.65	CLNC DEL 119.9	UNICOM 123.0 (CTAF)	122.70
---------------------------	---------------------------------------	--------------------------	-------------------------------	---------------



NE-1, 22 FEB 2024 to 21 MAR 2024

NE-1, 22 FEB 2024 to 21 MAR 2024



ELEV 83	D TDZE 83
---------	------------------

REIL Rwy 4 **0**
HIRL Rwy 4-22 **0**

CATEGORY	A	B	C	D
LPV DA		283-¾	200 (200-¾)	
LNAV/VNAV DA		697-1½	614 (700-1½)	
LNAV MDA	580-¾ 497 (500-¾)	580-1¼ 497 (500-1¼)	580-1½ 497 (500-1½)	
CIRCLING	600-1 517 (600-1)	720-1 637 (700-1)	720-1¾ 637 (700-1¾)	840-2½ 757 (800-2½)

WAAS CH 65900 W04A	APP CRS 044°	Rwy Idg TDZE Apt Elev	5200 83 83
--	------------------------	-----------------------------	---------------------------------------

RNAV (GPS) RWY 4

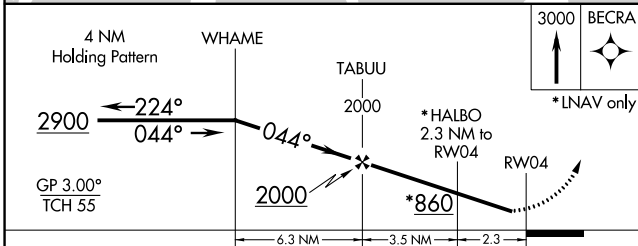
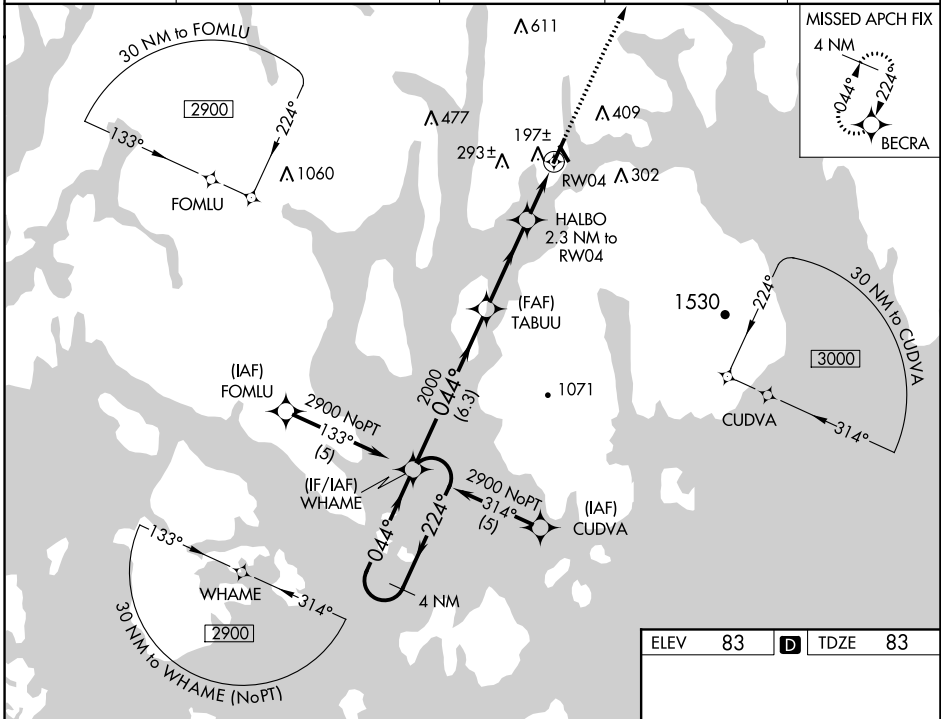
HANCOCK COUNTY/BAR HARBOR (BHB)

RNP APCH - GPS

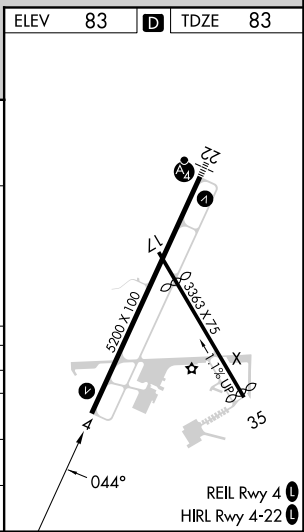
Baro-VNAV NA when using Bangor altimeter setting. For uncompensated Baro-VNAV systems, LNAV/VNAV NA below -15°C or above 49°C. When local altimeter setting not received, use Bangor altimeter setting and increase LPV DA to 416 feet, increase LNAV/VNAV DA to 547 feet, and all visibilities ¼ SM. Increase all MDAs 100 feet and LNAV visibility Cats C/D, and Circling visibility Cats C/D ¼ SM. Circling Rwy 17, 35 NA at night. Rwy 4 helicopter visibility reduction below ¼ SM NA.

MISSED APPROACH:
Climb to 3000 direct
BECRA and hold.

AWOS-3PT 118.35	BANGOR APP CON 133.6 284.65	CLNC DEL 119.9	UNICOM 123.0 (CTAF)	122.7
---------------------------	---------------------------------------	--------------------------	-------------------------------	--------------



CATEGORY	A	B	C	D
LPV DA		333-¾	250 (300-¾)	
LNAV/VNAV DA		464-1⅞	381 (400-1⅞)	
LNAV MDA	480-1	397 (400-1)	480-1⅞	397 (400-1⅞)
CIRCLING	600-1 517 (600-1)	720-1 637 (700-1)	720-1¾ 637 (700-1¾)	840-2½ 757 (800-2½)



NE-1, 22 FEB 2024 to 21 MAR 2024

NE-1, 22 FEB 2024 to 21 MAR 2024