

APP CRS	Rwy Idg	4887
175°	TDZE	707
	Apt Elev	719

RNAV (GPS) RWY 17

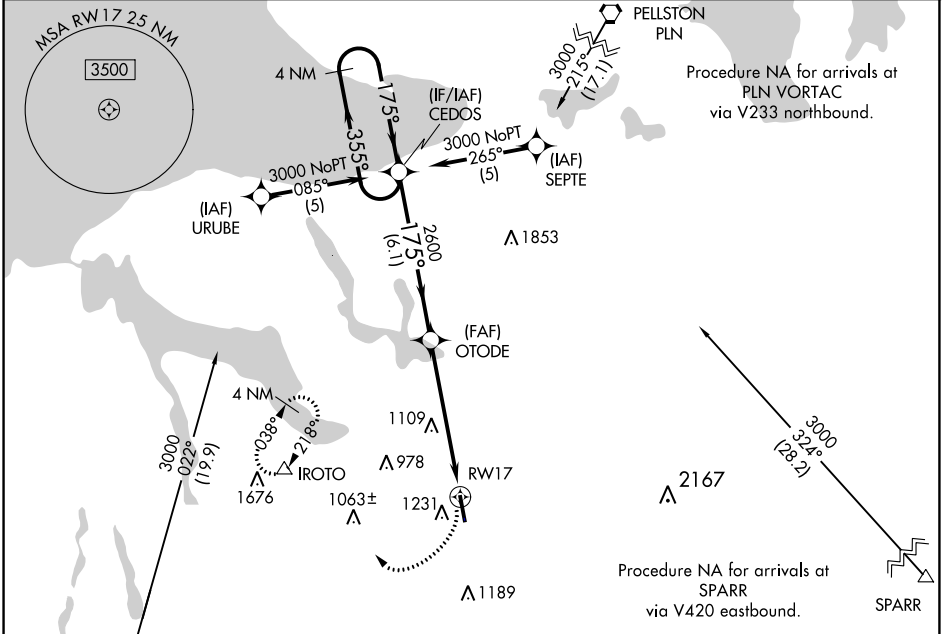
BOYNE MOUNTAIN (BFA)

RNP APCH

⚠️ NA Circling NA west of Rwy 17-35. Use Bellaire altimeter setting; when not received, use Pellston altimeter setting and increase all MDAs 20 feet and increase LNAV Cat A visibility ¼ SM. Rwy 17 helicopter visibility reduction below 1 SM NA. Procedure NA at night.

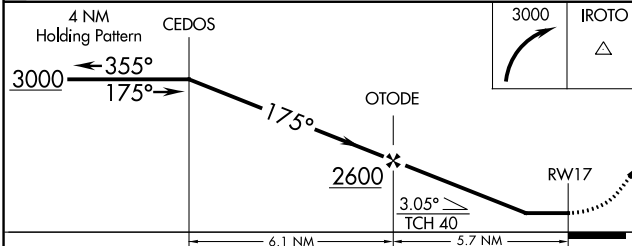
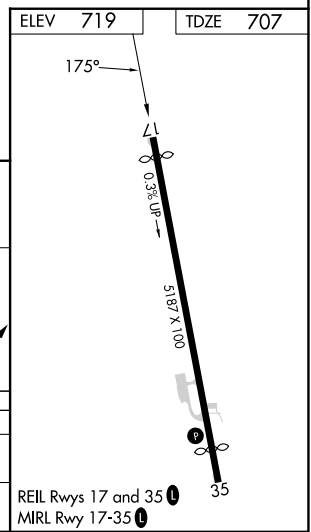
MISSED APPROACH: Climbing right turn to 3000 direct IROTO and hold.

AWOS-3PT 118.675	MINNEAPOLIS CENTER 134.6 354.05	UNICOM 122.8 (CTAF)	122.85
----------------------------	---	-------------------------------	---------------



Procedure NA for arrivals at PLN VORTAC via V233 northbound.

Procedure NA for arrivals at SPARR via V420 eastbound.



CATEGORY	A	B	C	D
LNAV MDA	1580 - 1 873 (900-1)	1580 - 1¼ 873 (900-1¼)	1580 - 2½ 873 (900-2½)	1580 - 2¾ 873 (900-2¾)
CIRCLING	1580 - 1¼ 861 (900-1¼)		1760 - 3 1041 (1100-3)	1880 - 3 1161 (1200-3)

EC-1, 22 FEB 2024 to 21 MAR 2024

EC-1, 22 FEB 2024 to 21 MAR 2024

APP CRS	Rwy Idg	4687
355°	TDZE	719
	Apt Elev	719

RNAV (GPS) RWY 35

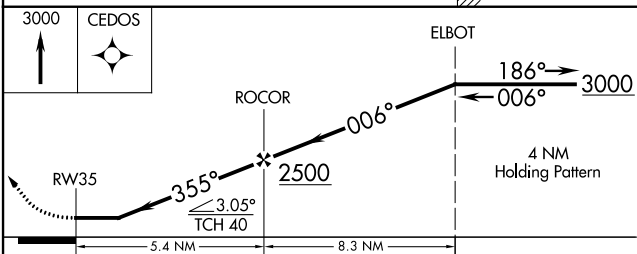
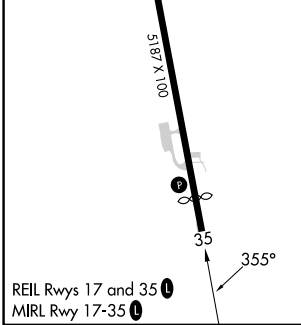
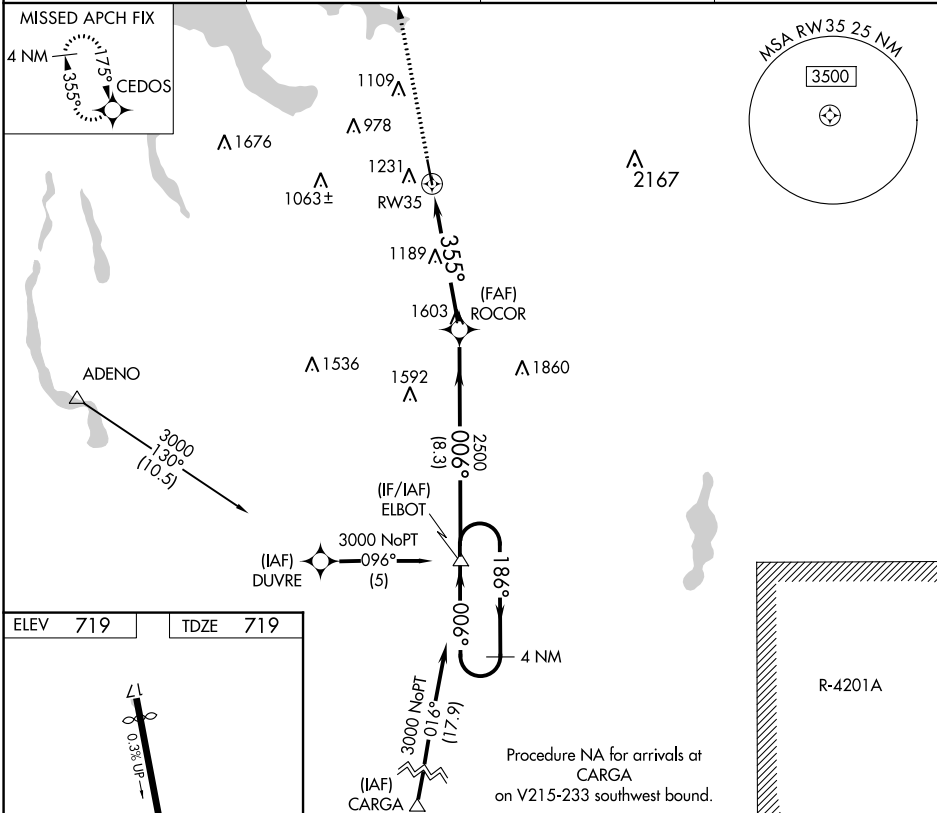
BOYNE MOUNTAIN (BFA)

RNP APCH.

NA Use Bellaire altimeter setting; when not received, use Pellston altimeter setting. Procedure NA at night. Rwy 35 helicopter visibility reduction below 1 SM NA.

MISSED APPROACH: Climb to 3000 direct CEDOS and hold.

AWOS-3PT 118.675	MINNEAPOLIS CENTER 134.6 354.05	UNICOM 122.8 (CTAF)	122.85
----------------------------	---	-------------------------------	---------------



CATEGORY	A	B	C	D
LNAV MDA	1840-1¼ 1121 (1200-1¼)	1840-1½ 1121 (1200-1½)	1840-3	1121 (1200-3)

EC-1, 22 FEB 2024 to 21 MAR 2024

EC-1, 22 FEB 2024 to 21 MAR 2024