

# BRIDGEHAVEN ONE DEPARTURE

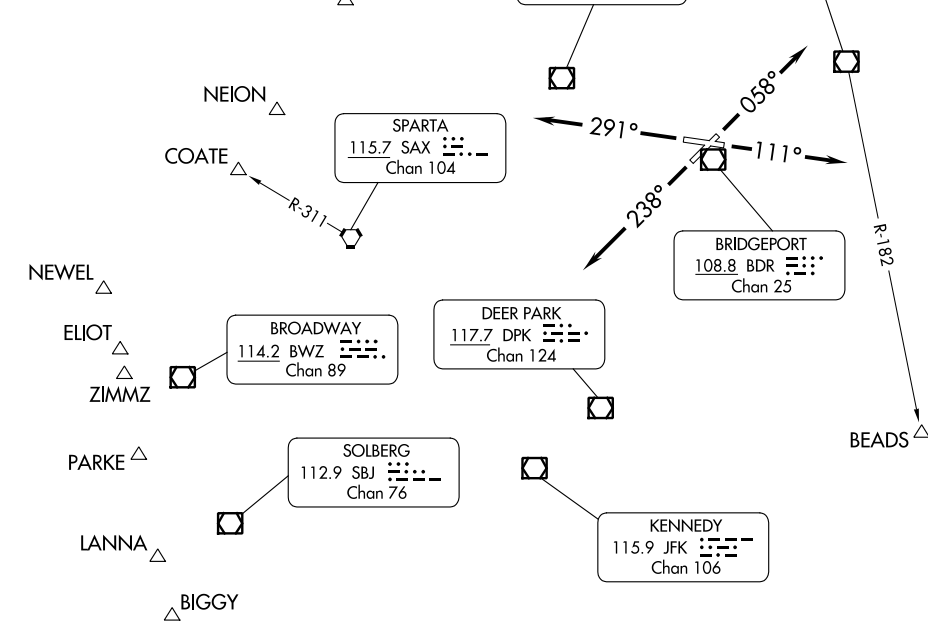
AL-621 (FAA)

BRIDGEPORT, CONNECTICUT

ATIS 119.15  
CLNC DEL 121.75  
124.075 (when twr closed)  
GND CON 121.75 257.8  
BRIDGEPORT TOWER ★ 120.9 (CTAF) 257.8  
NEW YORK DEP CON 124.075 343.65

**TOP ALTITUDE: 2000**

RADAR required.



**TAKEOFF MINIMUMS:**  
Rwys 6, 11, 24: Standard.  
Rwy 29: 600-2<sup>3</sup>/<sub>4</sub> or standard with minimum climb of 300' per NM to 700.

- NOTE: BEADS Departures expect vectors to MAD R-182. NOTE: Chart not to scale.  
 NOTE: COATE Departures expect vectors to SAX/SAX R-311.  
 NOTE: ELIOT authorized for all aircraft types but restricted to a final altitude of 14000 or 16000.  
 NOTE: NEWEL authorized only for jet aircraft requesting a final altitude of FL180 and above.  
 NOTE: ZIMMZ authorized for all aircraft types but restricted to a final altitude of FL180 and above.

## DEPARTURE ROUTE DESCRIPTION

**TAKEOFF RUNWAY 6:** Climb heading 058°, thence. . .  
**TAKEOFF RUNWAY 11:** Climb heading 111°, thence. . .  
**TAKEOFF RUNWAY 24:** Climb heading 238°, thence. . .  
**TAKEOFF RUNWAY 29:** Climb heading 291°, thence. . .  
 . . .expect vectors to assigned route/fix. Maintain 2000. Expect clearance to filed altitude/flight level within ten (10) minutes after departure.

NE-1, 22 FEB 2024 to 21 MAR 2024

NE-1, 22 FEB 2024 to 21 MAR 2024