


LOC I-AYS 108.3	APP CRS 184°	Rwy Idg 5992 TDZE 140 Apt Elev 141
---------------------------	------------------------	---

ILS Y or LOC Y RWY 19

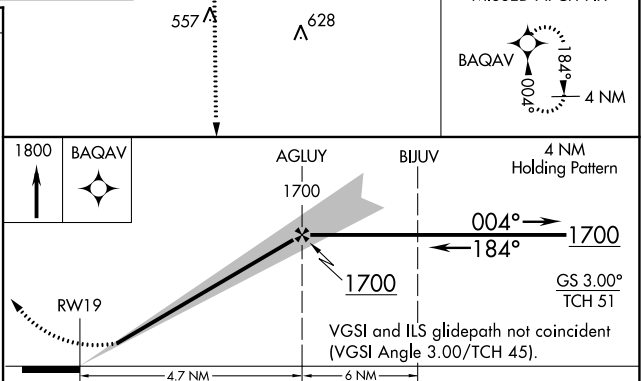
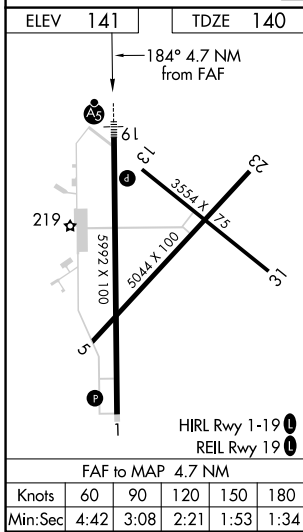
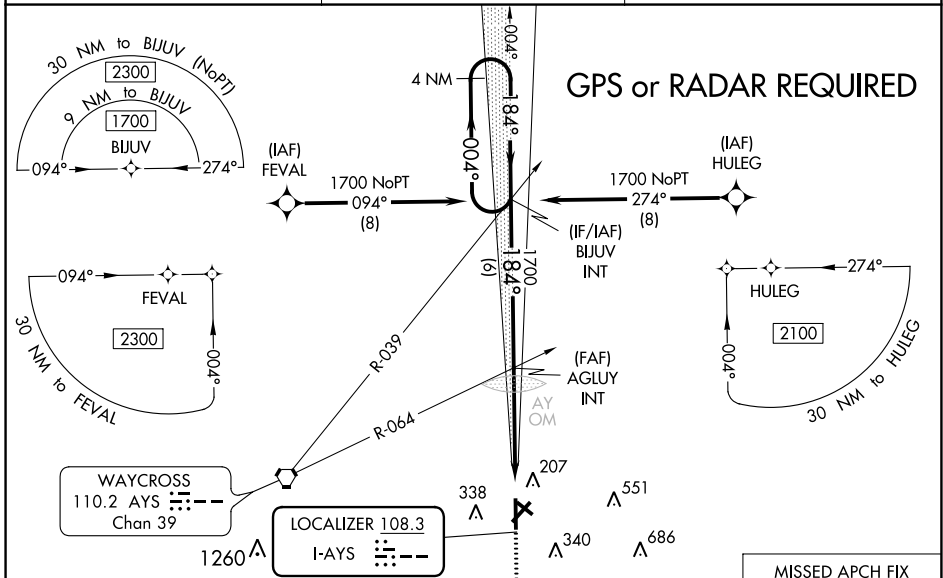
WAYCROSS-WARE COUNTY (AYS)

GPS required. When local altimeter setting not received, use Alma altimeter setting: increase DA to 390 feet and all MDA 60 feet; increase S-LOC 19 Cat C/D visibility 1/8 mile; increase Circling Cat C/D visibility 1/4 mile. For inop MALSRL when using Alma altimeter setting, increase S-LOC 19 Cat C/D visibility to 1 1/8 mile. Night landing Rwy 5, 31 NA.

MALSRL 

MISSED APPROACH: Climb to 1800 direct BAQAV and hold.

AWOS-3 118.575	JACKSONVILLE CENTER 127.575 269.025	UNICOM 122.8 (CTAF)
--------------------------	---	-------------------------------



CATEGORY	A	B	C	D
S-ILS 19	340-1/2		200 (200-1/2)	
S-LOC 19	600-1/2	460 (500-1/2)	600-7/8	460 (500-7/8)
CIRCLING	660-1 519 (600-1)	720-1 579 (600-1)	860-2 719 (800-2)	860-2 1/4 719 (800-2 1/4)

SE-4, 22 FEB 2024 to 21 MAR 2024


SE-4, 22 FEB 2024 to 21 MAR 2024

LOC I-AYS 108.3	APP CRS 184°	Rwy Idg 5992
		TDZE 140
		Apt Elev 141

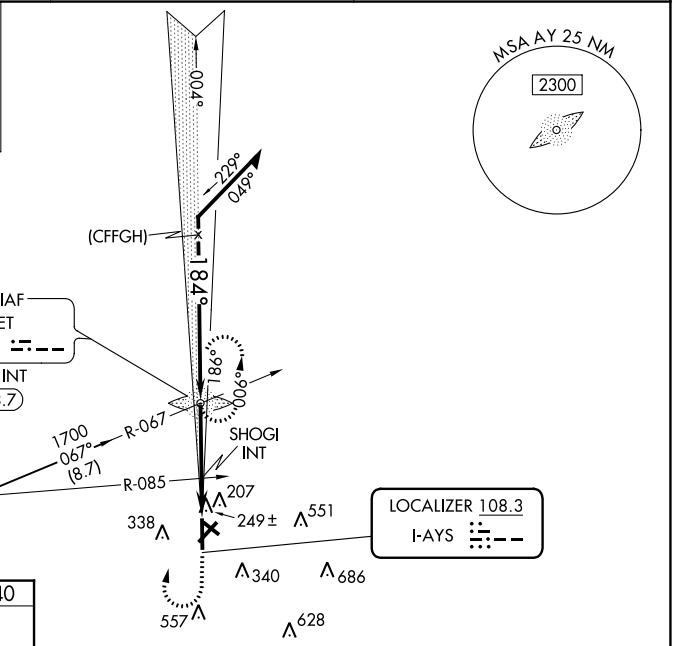
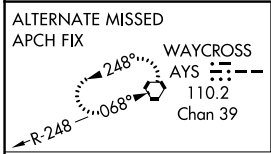
ILS Z or LOC Z RWY 19

WAYCROSS-WARE COUNTY (AYS)

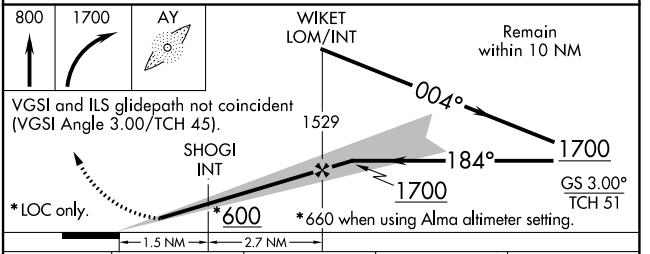
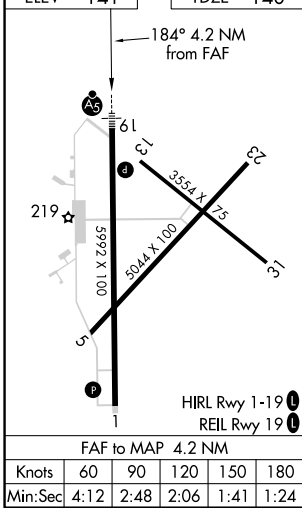
ADF Required. When local altimeter setting not received, use Alma altimeter setting: increase DA to 390 feet and all MDA 60 feet; increase S-LOC 19 Cat C/D visibility 1/8 mile; increase Circling Cat C/D visibility 1/4 mile. For inop MALSRL, increase S-LOC 19 Cat C/D visibility to 1 mile. For inop MALSRL when using Alma altimeter setting, increase S-LOC 19 Cat C/D visibility to 1 1/8 mile. Increase SHOGI Fix Minimums S-LOC 19 Cat C/D visibility to 1 1/8 mile. Night Landing Rwy 5, 31 NA.

MALSRL

MISSED APPROACH: Climb to 800 then climbing right turn to 1700 direct WIKET LOM and hold.

AWOS-3 118.575	JACKSONVILLE CENTER 127.575 269.025	UNICOM 122.8 (CTAF)
--------------------------	---	-------------------------------



ELEV 141	TDZE 140
-----------------	-----------------



CATEGORY	A	B	C	D
S-ILS 19	340-1/2		200 (200-1/2)	
S-LOC 19	600-1/2	460 (500-1/2)	600-7/8	460 (500-7/8)
C CIRCLING	660-1 519 (600-1)	720-1 579 (600-1)	860-2 719 (800-2)	860-2 1/4 719 (800-2 1/4)
SHOGI FIX MINIMUMS (DUAL VOR RECEIVERS REQUIRED)				
S-LOC 19	500-1/2	360 (400-1/2)	500-3/8	360 (400-3/8)
C CIRCLING	660-1 519 (600-1)	720-1 579 (600-1)	860-2 719 (800-2)	860-2 1/4 719 (800-2 1/4)

SE-4, 22 FEB 2024 to 21 MAR 2024

SE-4, 22 FEB 2024 to 21 MAR 2024

WAAS CH 56209 W01A	APP CRS 004°	Rwy Idg TDZE 140 Apt Elev 141	5992
--	------------------------	---	-------------

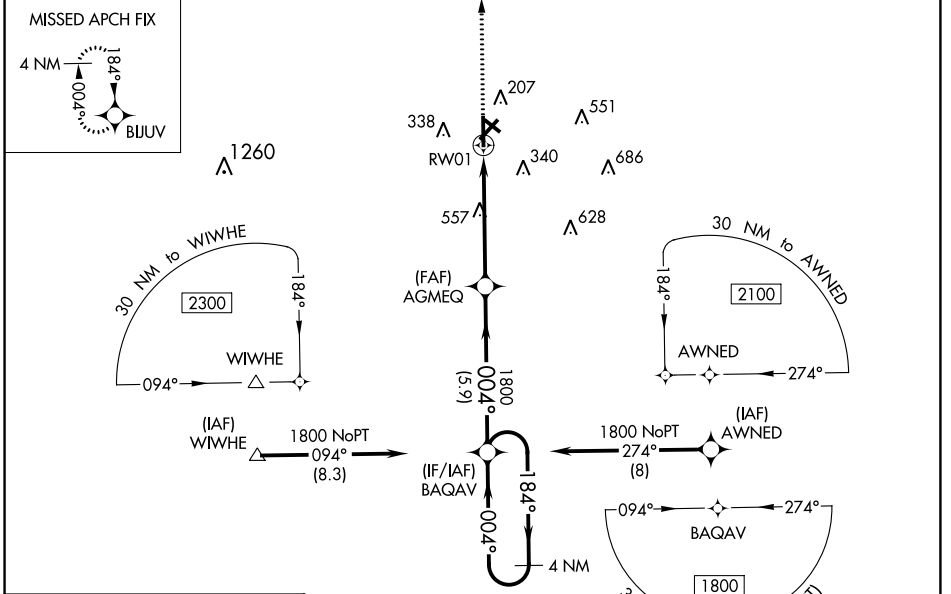
RNAV (GPS) RWY 1

WAYCROSS-WARE COUNTY (AYS)

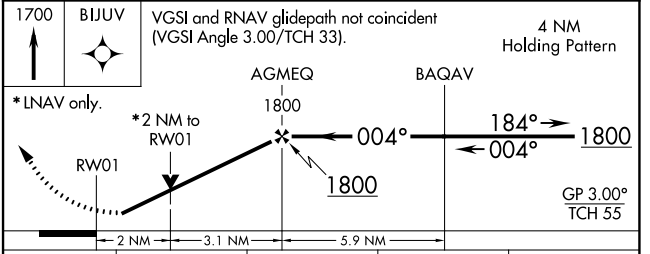
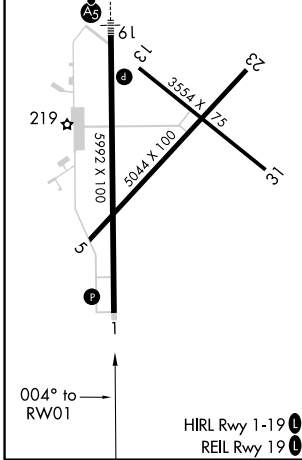
⚠ DME/DME RNP-0.3 NA. When local altimeter setting not received, use Alma altimeter setting and increase LPV DA to 473 feet and all visibilities 1/8 mile, LNAV/VNAV DA to 462 feet and all visibilities 1/8 mile; increase all MDA 60 feet and visibility Cats C and D 1/8 mile and Circling Cats C and D visibilities 1/4 mile. For uncompensated Baro-VNAV systems, LNAV/VNAV NA below -15°C (5°F) or above 54°C (130°F). Night Landing Rwy 5, 31 NA. VDP and Baro-VNAV NA when using Alma altimeter setting. Helicopter visibility reduction below 3/4 SM NA.

⚠ MISSED APPROACH: Climb to 1700 direct BIJUV and hold.

AWOS-3 118.575	JACKSONVILLE CENTER 127.575 269.025	UNICOM 122.8 (CTAF) 0
--------------------------	---	---------------------------------



ELEV 141	TDZE 140
-----------------	-----------------



CATEGORY	A	B	C	D
LPV DA		423-7/8	283 (300-7/8)	
LNAV/VNAV DA		412-7/8	272 (300-7/8)	
LNAV MDA	820-1	680 (700-1)	820-17/8	680 (700-17/8)
CIRCLING	820-1	679 (700-1)	860-2 719 (800-2)	860-2 1/4 719 (800-2 1/4)

SE-4, 22 FEB 2024 to 21 MAR 2024

SE-4, 22 FEB 2024 to 21 MAR 2024

WAAS CH 45509 W19A	APP CRS 184°	Rwy Idg TDZE 140 Apt Elev 141	5992
--	------------------------	---	-------------

RNAV (GPS) RWY 19

WAYCROSS-WARE COUNTY (AYS)

⚠ DME/DME RNP-0.3 NA. Baro-VNAV NA when using Alma altimeter setting. When local altimeter setting not received, use Alma altimeter setting: increase LPV DA to 390 feet and LNAV/VNAV DA to 600 feet and all MDA 60 feet; increase LNAV/VNAV visibility all Cats and LNAV Cat C/D visibility 1/4 mile; increase Circling Cat C/D visibility 1/4 mile. For inop MALSRS, increase LNAV Cat C/D visibility to 1 1/8 mile. For inop MALSRS when using Alma altimeter setting increase LNAV/VNAV visibility all Cats to 1 1/2 mile, and LNAV Cat C/D visibility to 1 3/8 mile. For uncompensated Baro-VNAV systems, LNAV/VNAV NA below -15°C (5°F) or above 54°C (130°F). Night landing Rwy 5, 31 NA.

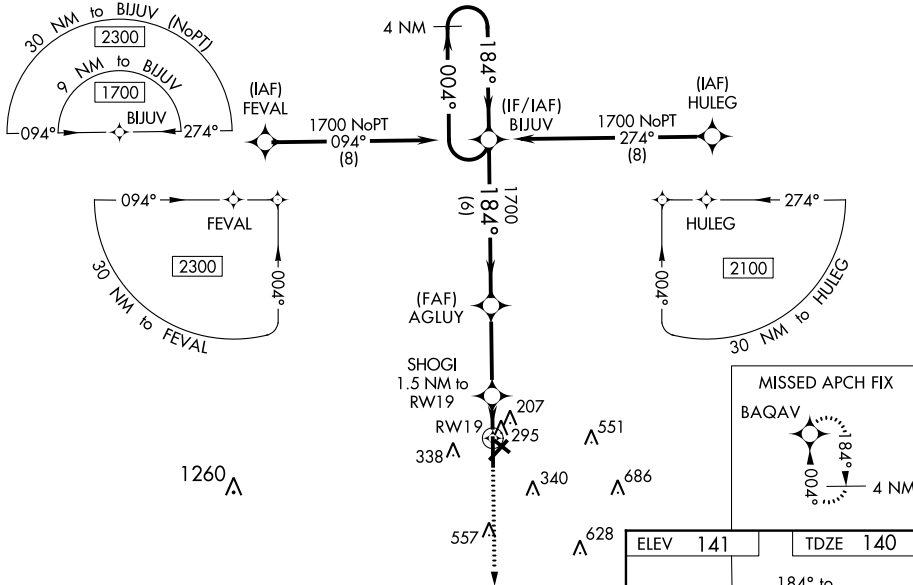


MISSED APPROACH:
Climb to 1800 direct
BAQAV and hold.

AWOS-3
118.575

JACKSONVILLE CENTER
127.575 269.025

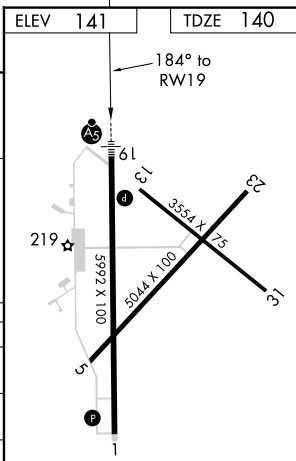
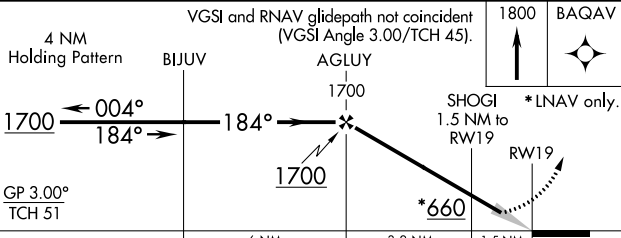
UNICOM
122.8 (CTAF) 0



SE-4, 22 FEB 2024 to 21 MAR 2024

SE-4, 22 FEB 2024 to 21 MAR 2024

ELEV 141	TDZE 140
----------	----------



CATEGORY	A	B	C	D
LPV DA		340-1/2	200 (200-1/2)	
LNAV/VNAV DA		550-7/8	410 (500-7/8)	
LNAV MDA	560-1/2	420 (500-1/2)	560-3/4	420 (500-3/4)
C CIRCLING	660-1 519 (600-1)	720-1 579 (600-1)	860-2 719 (800-2)	860-2 1/4 719 (800-2 1/4)

HIRL Rwy 1-19 **0**
REIL Rwy 19 **0**

VORTAC AYS 110.2 Chan 39	APP CRS 099°	Rwy Idg TDZE Apt Elev	N/A N/A 141
--	------------------------	-----------------------------	--

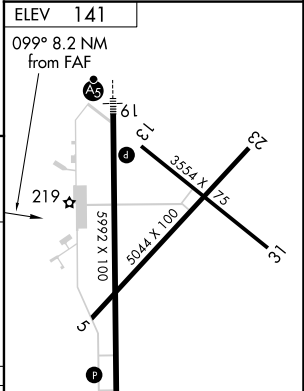
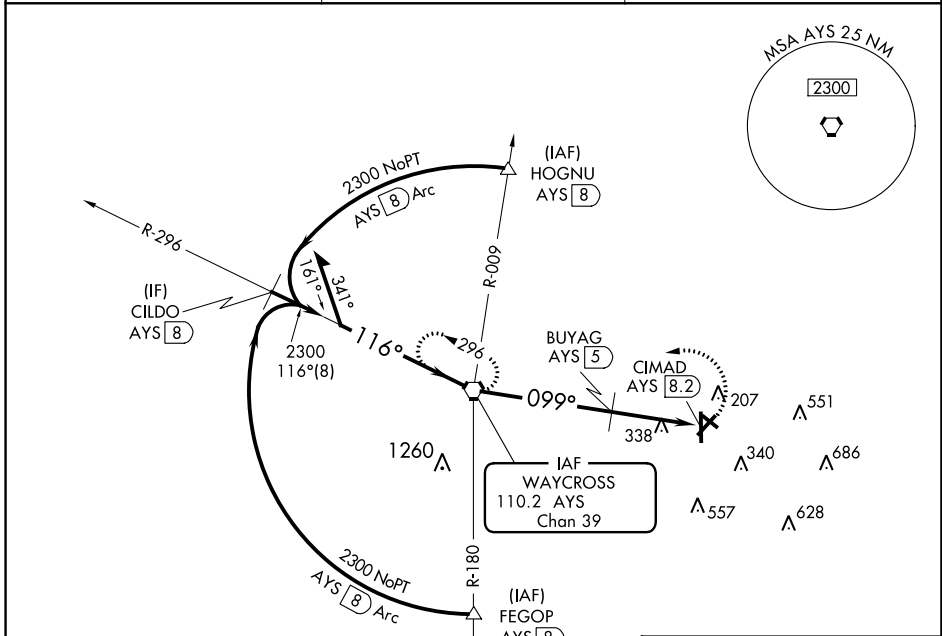
VOR-A

WAYCROSS-WARE COUNTY (AYS)

⚠ Circling to Rwy 5, 13, 23, 31 NA at night. Visibility reduction by helicopters NA. When local altimeter setting not received, use Alma altimeter setting and increase all MDA 60 feet and visibilities Cats C and D ¼ SM.

MISSED APPROACH: Climbing left turn to 2300 direct AYS VORTAC and hold.

AWOS-3 118.575	JACKSONVILLE CENTER 127.575 269.025	UNICOM 122.8 (CTAF) 0
--------------------------	---	---------------------------------



CIRCLING	740-1	579 (600-1)	860-2	860-2¼
			719 (800-2)	719 (800-2¼)

BUYAG FIX MINIMUMS (DME REQUIRED)				FAF to MAP 8.2 NM						
CIRCLING	680-1	720-1	860-2	860-2¼	Knots	60	90	120	150	180
	539 (600-1)	579 (600-1)	719 (800-2)	719 (800-2¼)	Min:Seq	8:12	5:28	4:06	3:17	2:44

HIRL Rwy 1-19 0
REIL Rwy 19 0

VOR-A

SE-4, 22 FEB 2024 to 21 MAR 2024

SE-4, 22 FEB 2024 to 21 MAR 2024