

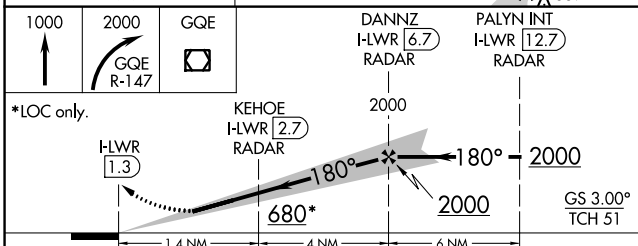
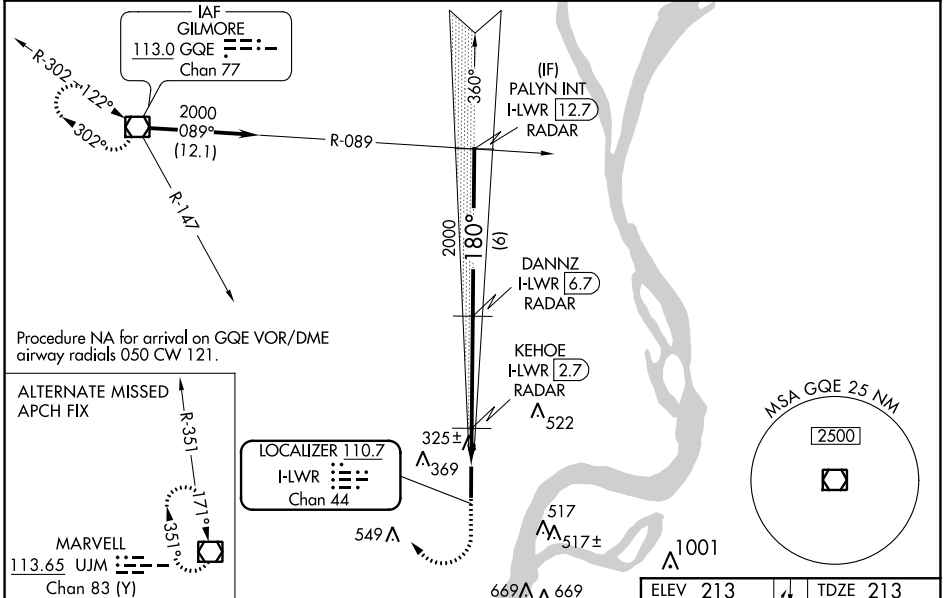
LOC/DME I-LWR 110.7 Chan 44	APP CRS 180°	Rwy Idg 6003 TDZE 213 Apt Elev 213
---	------------------------	---

ILS or LOC RWY 17

WEST MEMPHIS MUNI (A W M)

DME or RADAR required.	MALSR	MISSED APPROACH: Climb to 1000 then climbing right turn to 2000 on GQE VOR/DME R-147 to GQE VOR/DME and hold.
▲NA For inop ALS, increase S-LOC 17 Cat C/D visibility to 1½ SM and KEHOE FIX MINIMUMS S-LOC 17 Cats C/D visibility to 1 SM.		

ASOS 118.175	MEMPHIS APP CON 119.1 291.6	CLNC DEL 121.7	UNICOM 123.05 (CTAF)
------------------------	---------------------------------------	--------------------------	--------------------------------



CATEGORY	A	B	C	D
S-ILS 17	413-½ 200 (200-½)			
S-LOC 17	680-½ 467 (500-½)	680-1 467 (500-1)		
CIRCLING	680-1 467 (500-1)	740-1 527 (600-1)	800-1½ 587 (600-1½)	920-2¼ 707 (800-2¼)
KEHOE FIX MINIMUMS				
S-LOC 17	580-½ 367 (400-½)	580-5/8 367 (400-5/8)		
CIRCLING	640-1 427 (500-1)	740-1 527 (600-1)	800-1½ 587 (600-1½)	920-2¼ 707 (800-2¼)

ELEV 213	TDZE 213
MIRL Rwy 17-35	REIL Rwy 35
FAF to MAP 5.5 NM	
Knots	60 90 120 150 180
Min:Sec	5:30 3:40 2:45 2:12 1:50

SC-1, 22 FEB 2024 to 21 MAR 2024

SC-1, 22 FEB 2024 to 21 MAR 2024


WAAS CH 69316 W17A	APP CRS 180°	Rwy Idg TDZE Apt Elev	6003 213 213
--	------------------------	-----------------------------	---

RNAV (GPS) RWY 17

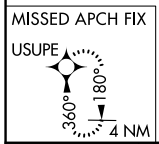
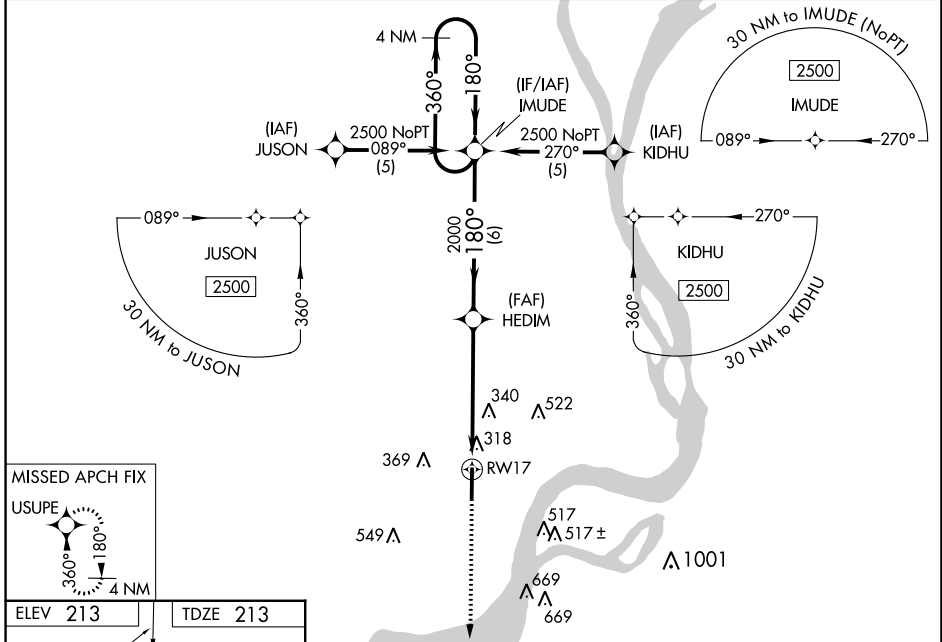
WEST MEMPHIS MUNI (A W M)

RNP APCH.

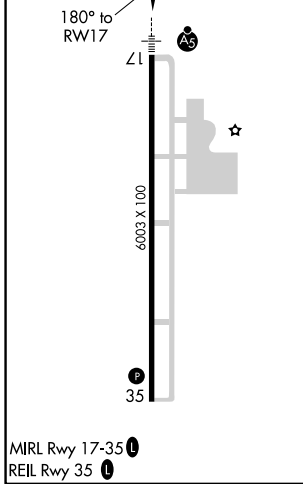
⚠ For uncompensated Baro-VNAV systems, LNAV/VNAV NA below -1.5°C (5°F) or above 48°C (118°F). When local altimeter setting not received, use Memphis Intl altimeter setting and increase LPV DA to 513 feet, LNAV/VNAV DA to 644 feet and all visibilities ¼ SM; increase all MDAs 60 feet and increase visibility LNAV Cat C and Circling Cat C and D ½ SM. Baro-VNAV and VDP NA when using Memphis Intl altimeter setting.

MALSR  MISSED APPROACH: Climb to 2100 direct USUPE and hold.

ASOS 118.175	MEMPHIS APP CON 119.1 291.6	CLNC DEL 121.7	UNICOM 123.05 (CTAF) 
------------------------	---------------------------------------	--------------------------	--



ELEV 213	TDZE 213
----------	----------



CATEGORY	A	B	C	D
LPV DA		463-½	250 (300-½)	
LNAV/VNAV DA		594-¾	381 (400-¾)	
LNAV MDA	600-½	387 (400-½)	600-⅝ 387 (400-⅝)	600-1 387 (400-1)
CIRCLING	640-1 427 (500-1)	740-1 527 (600-1)	800-1½ 587 (600-1½)	920-2¼ 707 (800-2¼)

SC-1, 22 FEB 2024 to 21 MAR 2024

SC-1, 22 FEB 2024 to 21 MAR 2024

APP CRS	Rwy Idg	6003
360°	TDZE	213
	Apt Elev	213

RNAV (GPS) RWY 35

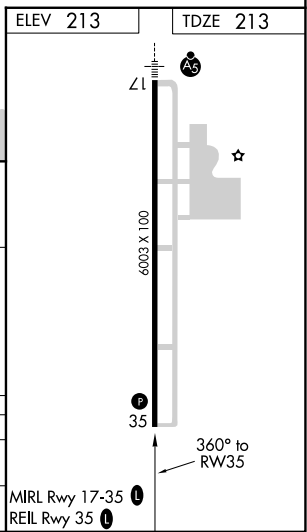
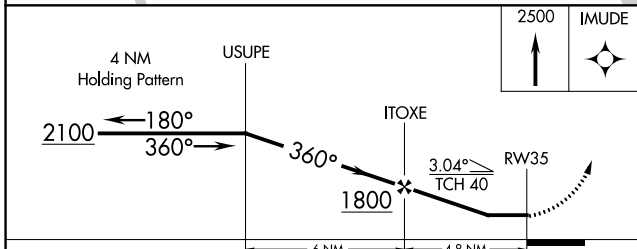
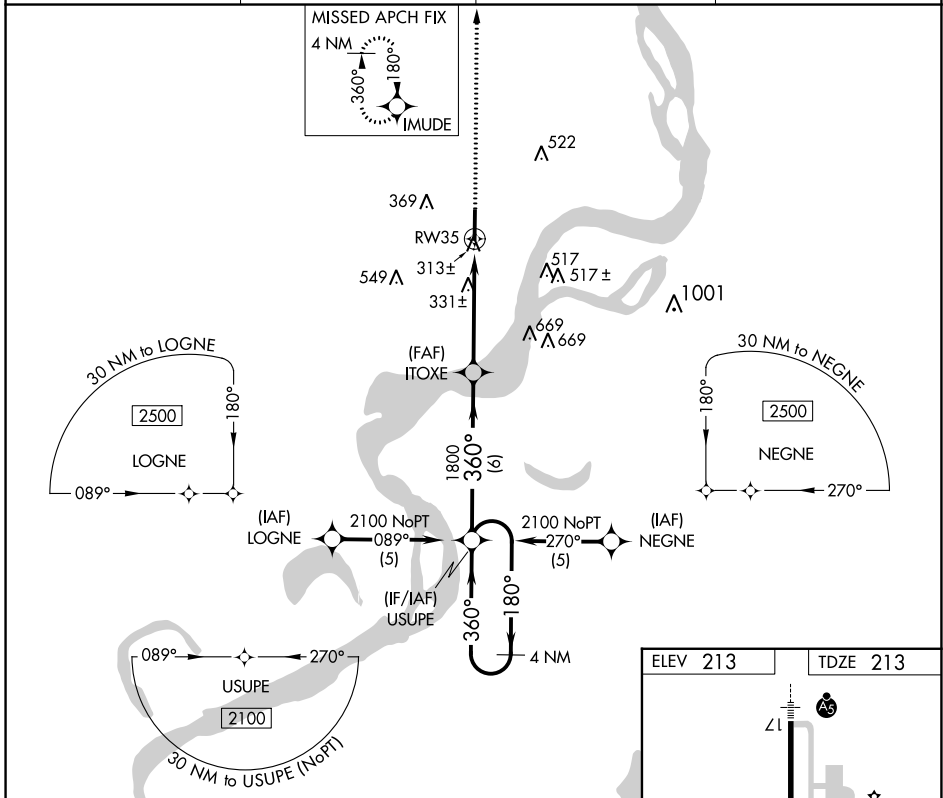
WEST MEMPHIS MUNI (A W M)

RNP APCH.

When local altimeter setting not received, use Memphis Intl altimeter setting; increase all MDA 60 feet, increase LNAV Cat C and D and Circling Cat C and D visibility ¼ SM. Rwy 35 helicopter visibility reduction below ¾ SM NA.

MISSED APPROACH: Climb to 2500 direct IMUDE and hold.

ASOS 118.175	MEMPHIS APP CON 119.1 291.6	CLNC DEL 121.7	UNICOM 123.05 (CTAF)
------------------------	---------------------------------------	--------------------------	--------------------------------



CATEGORY	A	B	C	D
LNAV MDA	600-1	387 (400-1)	600-1 1/8 387 (400-1 1/8)	600-1 1/4 387 (400-1 1/4)
CIRCLING	640-1 427 (500-1)	740-1 527 (600-1)	800-1 1/2 587 (600-1 1/2)	920-2 1/4 707 (800-2 1/4)

SC-1, 22 FEB 2024 to 21 MAR 2024

SC-1, 22 FEB 2024 to 21 MAR 2024