

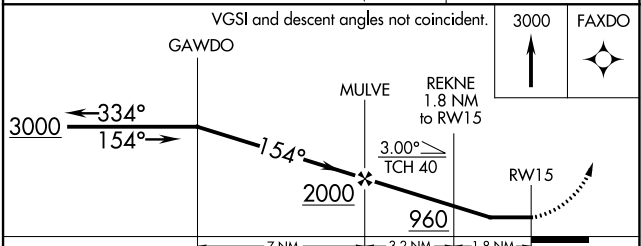
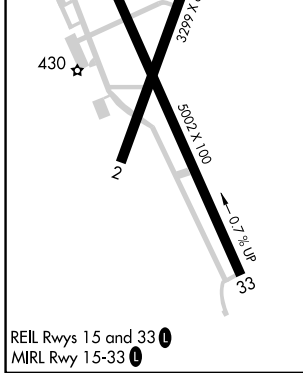
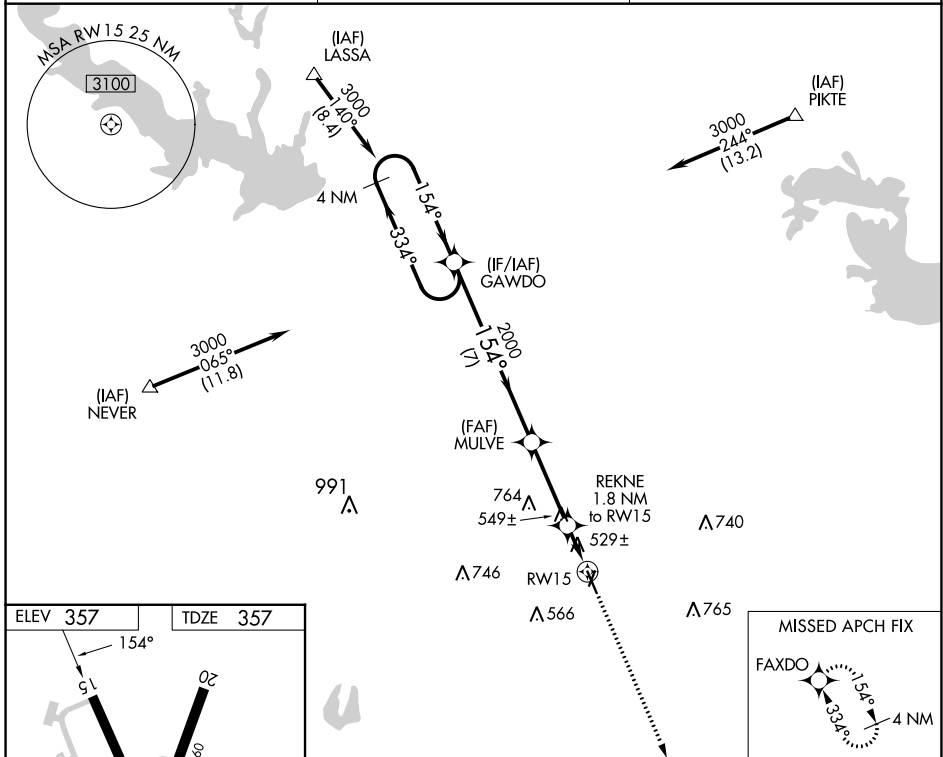
WAAS CH 90426 W15A	APP CRS 154°	Rwy Idg TDZE Apt Elev	5002 357 357
--	------------------------	-----------------------------	---

RNAV (GPS) RWY 15

HARRISON COUNTY (ASL)

RNP APCH.	MISSED APPROACH: Climb to 3000 direct FAXDO and hold.
<p>▼ Rwy 15 helicopter visibility reduction below 1 SM NA.</p> <p>▲ NA When local altimeter setting not received, use Longview altimeter setting and increase all MDA 60 feet; increase LP Cat C visibility 1/8 mile. Procedure NA at night.</p>	

AWOS-3PT 118.675	SHREVEPORT APP CON 119.9 335.55	UNICOM 122.8 (CTAF) 0
----------------------------	---	---------------------------------



CATEGORY	A	B	C	D
LP MDA	780-1	423 (500-1)	780-1 1/4 423 (500-1 1/4)	NA
LNAV MDA	800-1	443 (500-1)	800-1 3/8 443 (500-1 3/8)	NA

SC-2, 22 FEB 2024 to 21 MAR 2024

SC-2, 22 FEB 2024 to 21 MAR 2024

WAAS CH 86926 W33A	APP CRS 334°	Rwy Idg TDZE Apt Elev	5002 349 357
--	------------------------	-----------------------------	---

RNAV (GPS) RWY 33

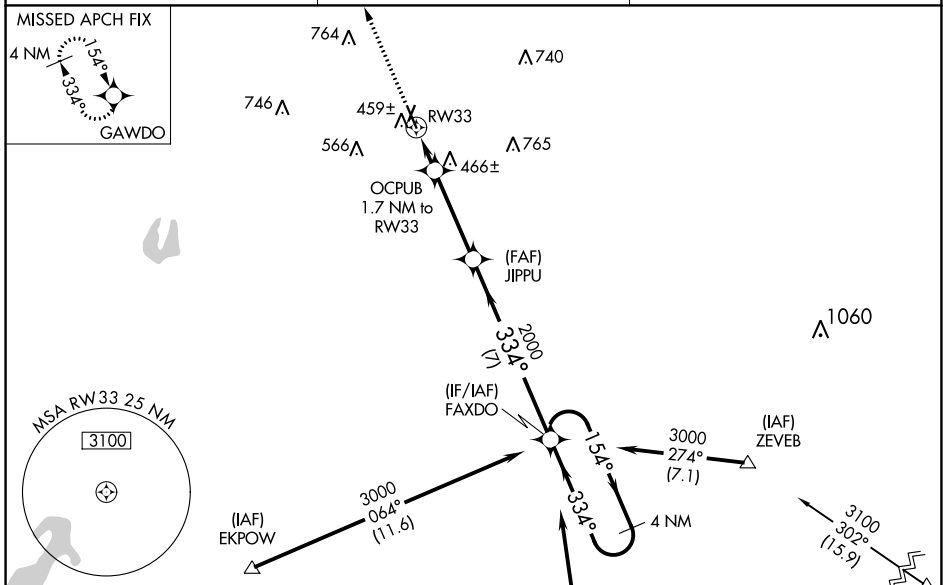
HARRISON COUNTY (ASL)

RNP APCH.

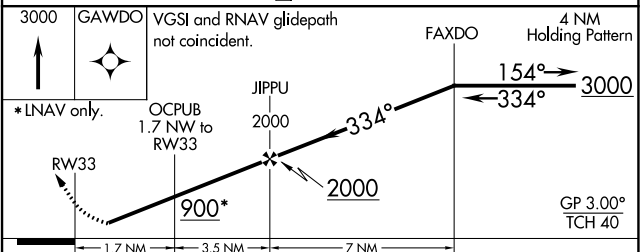
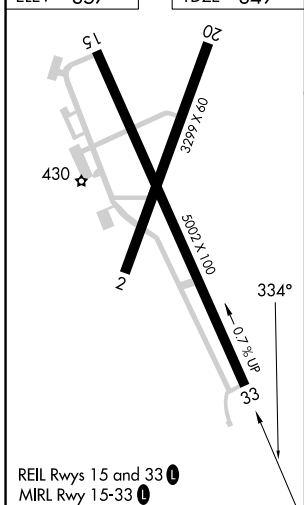
Baro-VNAV NA when using Longview altimeter setting. For uncompensated Baro-VNAV systems, LNAV/VNAV NA below -5°C (23°F) or above 40°C (104°F). Rwy 33 helicopter visibility reduction below 3/4 SM NA. When local altimeter setting not received, use Longview altimeter setting and increase all DA 52 feet and all MDA 60 feet; increase LPV all Cats visibility 1/8 mile, LNAV/VNAV all Cats and LNAV Cat C visibility 1/4 mile.

MISSED APPROACH:
Climb to 3000 direct GAWDO and hold.

AWOS-3PT 118.675	SHREVEPORT APP CON 119.9 335.55	UNICOM 122.8 (CTAF)
----------------------------	---	-------------------------------



ELEV 357	TDZE 349
----------	----------



CATEGORY	A	B	C	D
LPV DA	635-1 286 (300-1)			NA
LNAV/VNAV DA	658-1 309 (300-1)			NA
LNAV MDA	720-1 371 (400-1)	720-1 371 (400-1 1/8)		NA

SC-2, 22 FEB 2024 to 21 MAR 2024

SC-2, 22 FEB 2024 to 21 MAR 2024

MARSHALL, TEXAS

AL-5070 (FAA)

23166

VORTAC GGG 112.9 Chan 76	APP CRS 068°	Rwy Idg TDZE Apt Elev	N/A N/A 357
---------------------------------------	------------------------	-----------------------------	--------------------------

VOR/DME-A
HARRISON COUNTY (ASL)

⚠ When local altimeter setting not received, use Longview altimeter setting and increase all MDA 60 feet; increase Cat B visibility to 1½. Night Landing; Rwy 2, 15, 20 NA. Helicopter visibility reduction below 1 SM NA.

⚠ NA MISSED APPROACH: Climb to 2100 then left turn via GGG R-068 to RHALL/GGG 19 DME and hold.

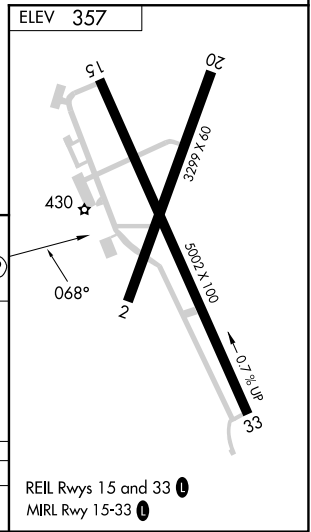
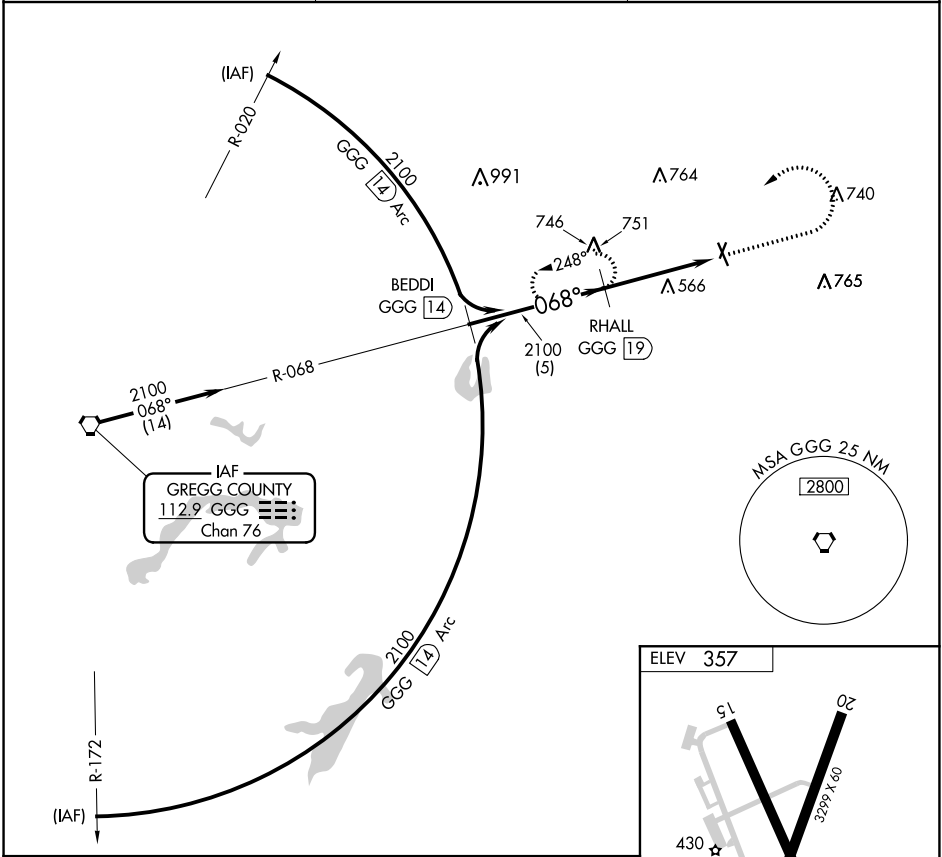
AWOS-3PT
118.675

SHREVEPORT APP CON
119.9 335.55

UNICOM
122.8 (CTAF) **📻**

SC-2, 22 FEB 2024 to 21 MAR 2024

SC-2, 22 FEB 2024 to 21 MAR 2024



	BEDDI GGG 14	RHALL GGG 19	2100	GGG 23.3
Procedure Turn NA	2100 — 068° — 2100		GGG 23.3	
	5 NM		4.3 NM	
CATEGORY	A	B	C	D
CIRCLING	1300-1¼ 943 (1000-1¼)		NA	

MARSHALL, TEXAS
Amdt 4F 25MAR21

32°31'N-94°18'W

HARRISON COUNTY (ASL)
VOR/DME-A

REIL Rwy 15 and 33 **📻**
MIRL Rwy 15-33 **📻**