

ARB ATIS  
 134.55  
 FNT ATIS  
 133.15  
 DET ATIS  
 124.875  
 PTK ATIS  
 125.025  
 YIP ATIS  
 127.425  
 KMTC ATIS  
 125.325 270.1  
 DETROIT APP CON  
 134.3 284.0

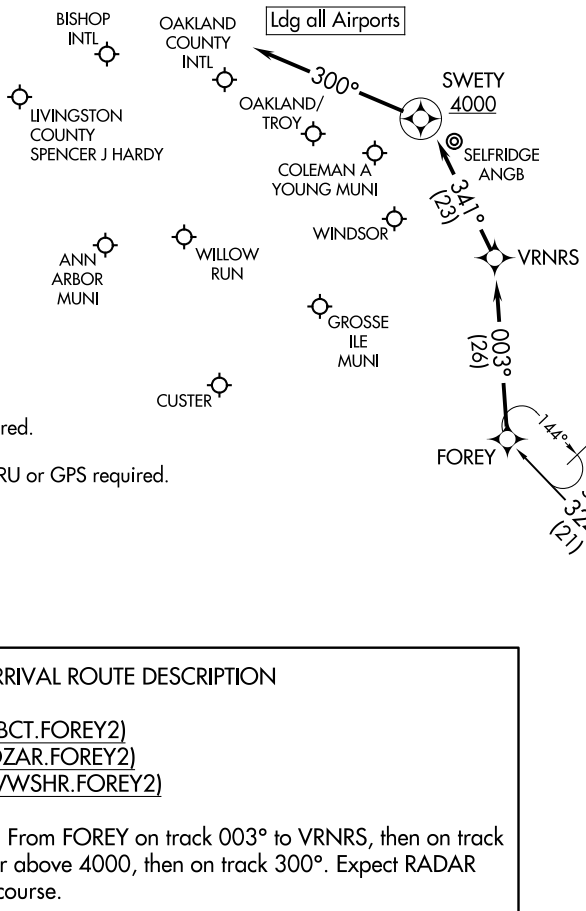
NOTE: RADAR required.  
 NOTE: RNAV 1.  
 NOTE: DME/DME/IRU or GPS required.

NOTE: Chart not to scale.

ARRIVAL ROUTE DESCRIPTION

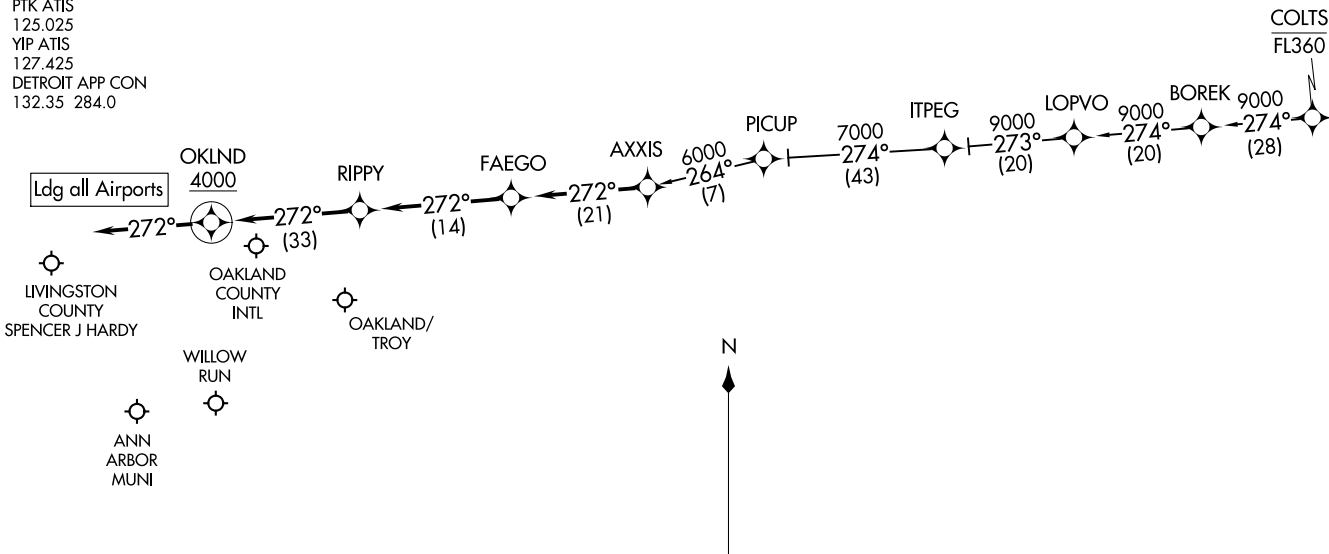
BOBCT TRANSITION (BOBCT.FOREY2)  
KOZAR TRANSITION (KOZAR.FOREY2)  
WWSHR TRANSITION (WWSHR.FOREY2)

LANDING ALL AIRPORTS: From FOREY on track 003° to VRNRS, then on track 341° to cross SWETY at or above 4000, then on track 300°. Expect RADAR vectors to final approach course.



OKLND ONE ARRIVAL (RNAV)  
(AXXIS, OKLND1) 24MAR18

ARB ATIS  
134.55  
PTK ATIS  
125.025  
YIP ATIS  
127.425  
DETROIT APP CON  
132.35 284.0



ARRIVAL ROUTE DESCRIPTION

COLTS TRANSITION (COLTS.OKLND1):  
PICUP TRANSITION (PICUP.OKLND1):

**LANDING ALL AIRPORTS:** From AXXIS on track 272° to FAEGO, then on track 272° to RIPPY, then on track 272° to cross OKLND at or above 4000, then on track 272°. Expect RADAR vectors to final approach course.

NOTE: RADAR required.  
NOTE: RNAV 1.  
NOTE: DME/DME/IRU or GPS required.

NOTE: Chart not to scale.

PONTIAC, MICHIGAN

(AXXIS, OKLND1) 20198  
OKLND ONE ARRIVAL (RNAV)

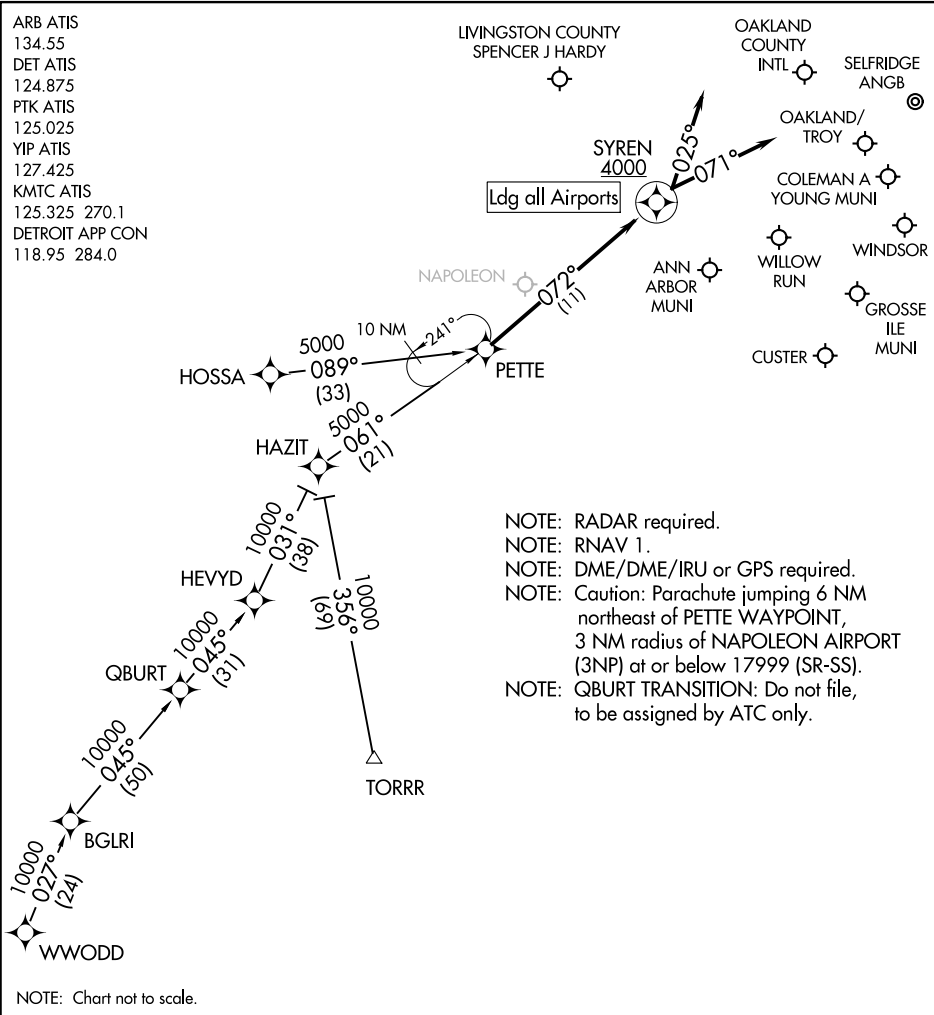
AL-5052 (FAA)

PONTIAC, MICHIGAN

# PETTE TWO ARRIVAL (RNAV)

PONTIAC, MICHIGAN

ARB ATIS  
134.55  
DET ATIS  
124.875  
PTK ATIS  
125.025  
YIP ATIS  
127.425  
KMTC ATIS  
125.325 270.1  
DETROIT APP CON  
118.95 284.0



- NOTE: RADAR required.
- NOTE: RNAV 1.
- NOTE: DME/DME/IRU or GPS required.
- NOTE: Caution: Parachute jumping 6 NM northeast of PETTE WAYPOINT, 3 NM radius of NAPOLEON AIRPORT (3NP) at or below 17999 (SR-SS).
- NOTE: QBURT TRANSITION: Do not file, to be assigned by ATC only.

NOTE: Chart not to scale.

## ARRIVAL ROUTE DESCRIPTION

HOSSA TRANSITION (HOSSA.PETTE2):

QBURT TRANSITION (QBURT.PETTE2):

TORRR TRANSITION (TORRR.PETTE2):

WWODD TRANSITION (WWODD.PETTE2):

LANDING CYQG, KONZ, KARB, KYIP, KTF, KDET: From PETTE on track 072° to cross SYREN at or above 4000, then on track 071°. Expect RADAR vectors to final approach course.

LANDING KPTK, KMTC, KOZW, KYLL: From PETTE on track 072° to cross SYREN at or above 4000, then on track 025°. Expect RADAR vectors to final approach course.

# PETTE TWO ARRIVAL (RNAV)

PONTIAC, MICHIGAN

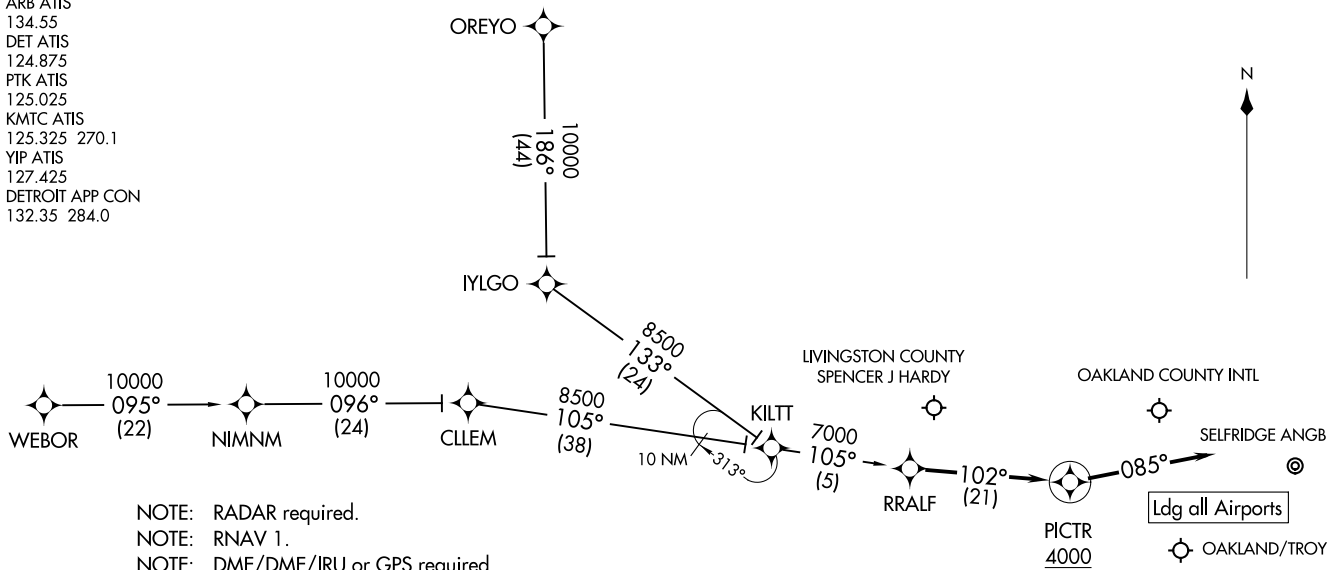
EC-1, 22 FEB 2024 to 21 MAR 2024

EC-1, 22 FEB 2024 to 21 MAR 2024

RRALF THREE ARRIVAL (RNAV)  
(RRALF.RRALF3) 21MAY20

(RRALF.RRALF3) 20198  
RRALF THREE ARRIVAL (RNAV)  
AL-5052 (FAA)

ARB ATIS  
134.55  
DET ATIS  
124.875  
PTK ATIS  
125.025  
KMTC ATIS  
125.325 270.1  
YIP ATIS  
127.425  
DETROIT APP CON  
132.35 284.0



- NOTE: RADAR required.
- NOTE: RNAV 1.
- NOTE: DME/DME/IRU or GPS required.
- NOTE: CLLEM TRANSITION: Do not file, to be assigned by ATC only.

ARRIVAL ROUTE DESCRIPTION

- CLLEM TRANSITION (CLLEM.RRALF3)
- OREYO TRANSITION (OREYO.RRALF3)
- WEBOR TRANSITION (WEBOR.RRALF3)

LANDING ALL AIRPORTS: From RRALF on track 102° to cross PICTR at or above 4000, then on track 085°. Expect RADAR vectors to final approach course.

NOTE: Chart not to scale.

PONTIAC, MICHIGAN

PONTIAC, MICHIGAN