

LOC I-APN	APCH CRS	Req'd Idg	9001
109.7	007°	TDZE	685
		Appt Elev	690

AL-718 [USAF]

ALPENA COUNTY RGNL (KAPN)

DME required:

▼ \* When AIS inop, increase vis to ¾ mile.  
 \*\* When AIS inop, increase vis to 1¾ miles.



MAISR MISSED APPROACH: Climb to 1300, then climbing right turn to 5000 on APN VORTAC R-014 to BAHAI/1.5 DME and hold. Continue climb-in-hold to 5000.

ATIS \* 120.675 327.05  
 ALPENA APP CON 128.425 379.3

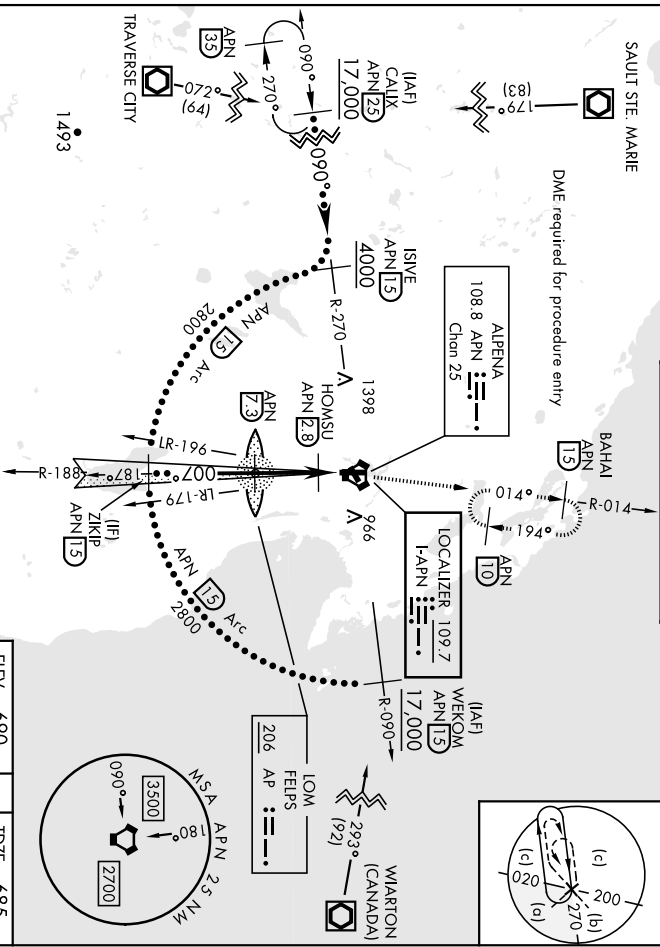
ALPENA TOWER \* 121.35 (CTAF) 318.1

GND CON 121.9 275.8

UNICOM 122.95

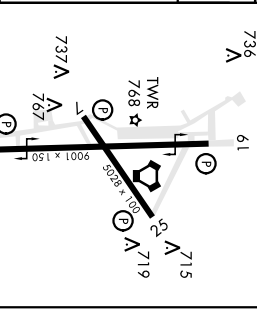
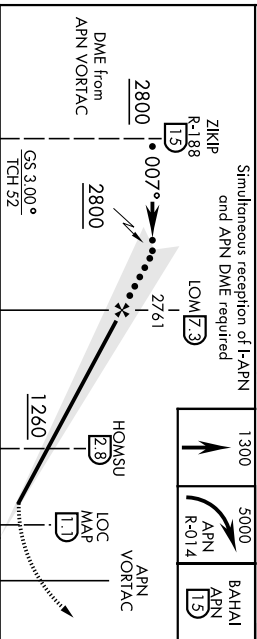
SAULT STE MARIE

DME required for procedure entry



EMERG SAFE ALI 100 NM 4000

Simultaneous reception of I-APN and APN DME required



CATEGORY	C	D	E	
S-ILS 1 *	885-1/2	200	(200-1/2)	
S-LOC 1 **	1140-7/8	455	(500-7/8)	
CIRCLING	1220-1 1/2	1280-2	1320-2 1/2	
	530 (600-1 1/2)	590 (600-2)	630 (700-2 1/4)	
		Knots	120	140
		Min:Sec	3:09	2:42
			1:60	1:80
			2:22	2:06
			2:06	1:53

ALPENA, MICHIGAN

45°05'N-83°34'W

ALPENA COUNTY RGNL (KAPN)

Amch 5D 13AUG20

H-I-L-S or LOC Rwy 1

# HI-TACAN RWY 19

VORTAC APN	APCH CRS	Rev./Idg	9001
<b>108.8</b>	<b>175°</b>	TDZE	<b>683</b>
Chn <b>25</b>	Appl Elev	<b>690</b>	

AL-718 [USAF]

ALPENA COUNTY RGNL (KAPN)

DME required:

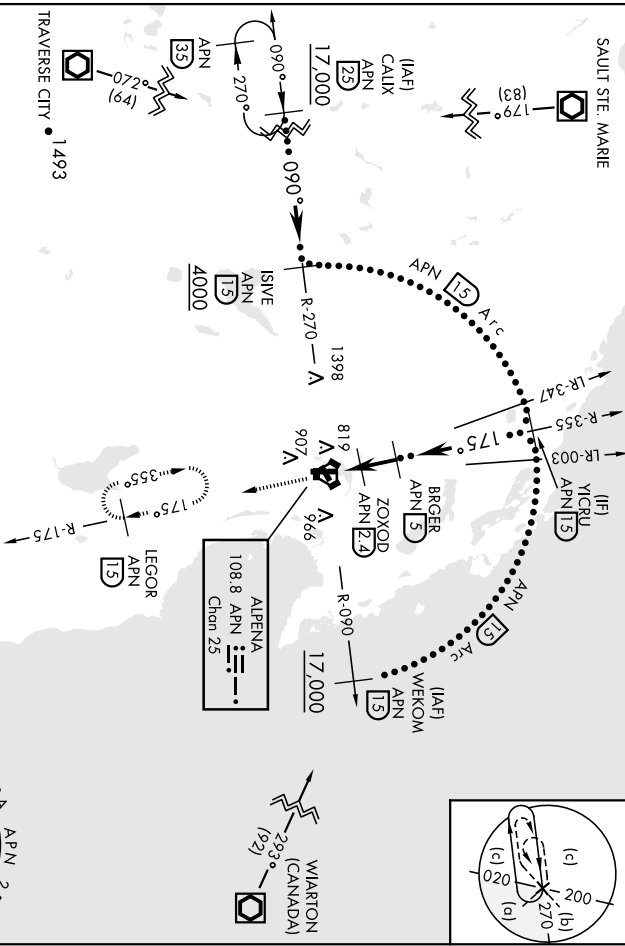
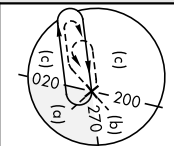
<b>ATIS*</b>	<b>ALPENA APP CON</b>	<b>ALPENA TOWER*</b>	<b>GND CON</b>	<b>UNICOM</b>
<b>120.675 327.05</b>	<b>128.425 379.3</b>	<b>121.35 (CTAF) 0318.1</b>	<b>121.9 275.8</b>	<b>122.95</b>

MISSED APPROACH: Climb to 5000 on APN R-175 to LEGOR (1.5 DME) and hold, continue climb in hold to 5000.

<b>120.675 327.05</b>	<b>ALPENA APP CON</b>	<b>ALPENA TOWER*</b>	<b>GND CON</b>	<b>UNICOM</b>

<b>121.35 (CTAF) 0318.1</b>	<b>121.9 275.8</b>	<b>122.95</b>
-----------------------------	--------------------	---------------

<b>121.35 (CTAF) 0318.1</b>	<b>121.9 275.8</b>	<b>122.95</b>
-----------------------------	--------------------	---------------

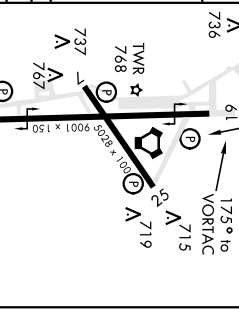
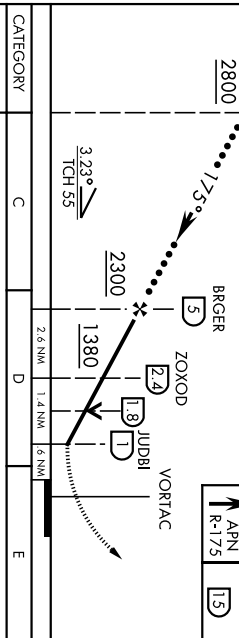


TRVERSE CITY • 1493

DME required for procedure entry

EMERG SAFE ALT 100 NM 4000

YICRU <b>15</b>	R-355	2800	17.5°	5000	LEGOR	APN	APN	ELEV	690	TDZE	683
VGS1 and descent angles not coincident (VGS1 Angle 3.00/TCR 39)											
BRGER											
ZOXOD											
JUDBI											
VORTAC											



S-19	C	11.40-13/8	457 (500-13/4)	1280-2	590 (600-2)	1320-2 1/4	630 (700-2 1/4)
CIRCLING				530 (600-1 1/2)			

HIRL Rwy 1-19	MIRL Rwy 7-25	REIL Rwy 7.25 and 19
0	0	0

ALPENA, MICHIGAN

And# 5C 13AUG20

ALPENA COUNTY RGNL (KAPN)

HI-TACAN RWY 19



ALPENA, MICHIGAN		APCH CRS	Rev./Idg	9001
VOR/AC APN	108.8	TDZE	685	
Chon 25	014°	Appl Elev	690	

AL-718 [USAF]

ALPENA COUNTY RGNL (KAPN)

DME required:	▲ *When ALS Inop, increase vis to 1 3/8.
---------------	--

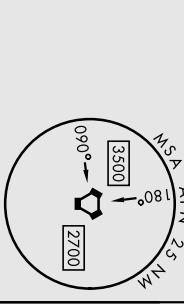
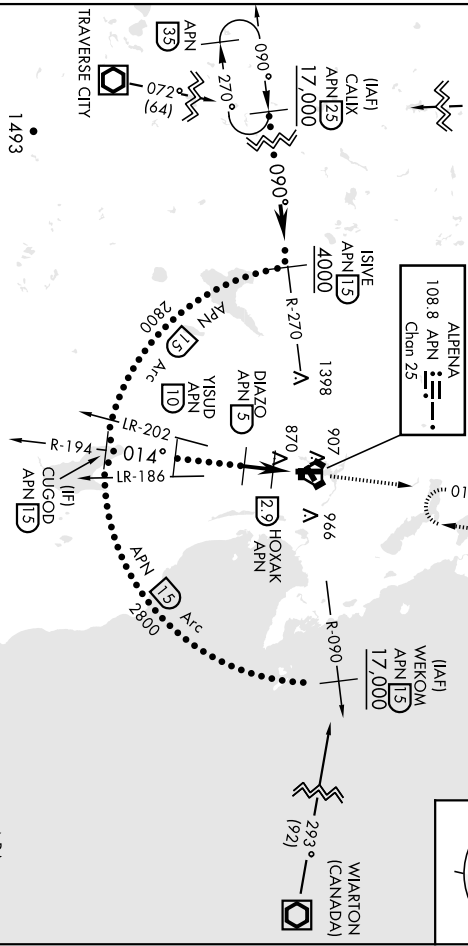
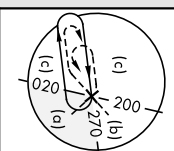
MAISLR

MISSED APPROACH: Climb to 5000 on APN R-014 to BAHAI 15 DME and hold, continue climb in hold to 5000.

ATIS *	ALPENA APP CON	ALPENA TOWER *
120.675 327.05	128.425 379.3	121.35 (CTAF) 318.1

GND CON	UNICOM
121.9 275.8	122.95

SAUT SITE: MARIE



CATEGORY	C	D	E
	1140-7/8	455 (500-7/8)	1320-2 1/4
S-1 *	1220-1 1/2	1280-2	1320-2 1/4
◻ CIRCLING	530 (600-1 1/2)	590 (600-2)	630 (700-2 1/4)

CUGOD	YISUD	5000	BAHAI	ELEV 690	TDZE 685
R-194	110	APN	APN	736	
2800	2800	DIAZO	HOXAK	715	
2000	2000	5	WUJIM	737	
3.14°	014°	29	VORTAC	768	
TCH 52	1340	2		767	
		1		01	

2.1 NM	1.3 NM	5 NM
--------	--------	------

REIL Rwy 7-25, 19	715
HIRL Rwy 1-19	736
MIRL Rwy 7-25	737
	768
	767
	01

ALPENA, MICHIGAN  
 45°05'N - 83°34'W  
 ALPENA COUNTY RGNL (KAPN)  
 Amdt 1 C 13AUG20

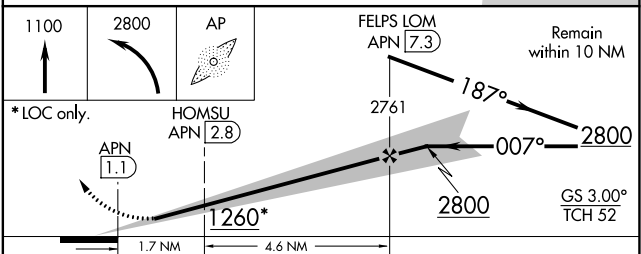
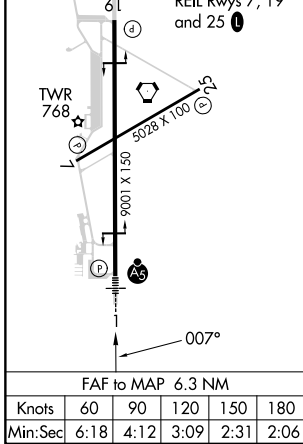
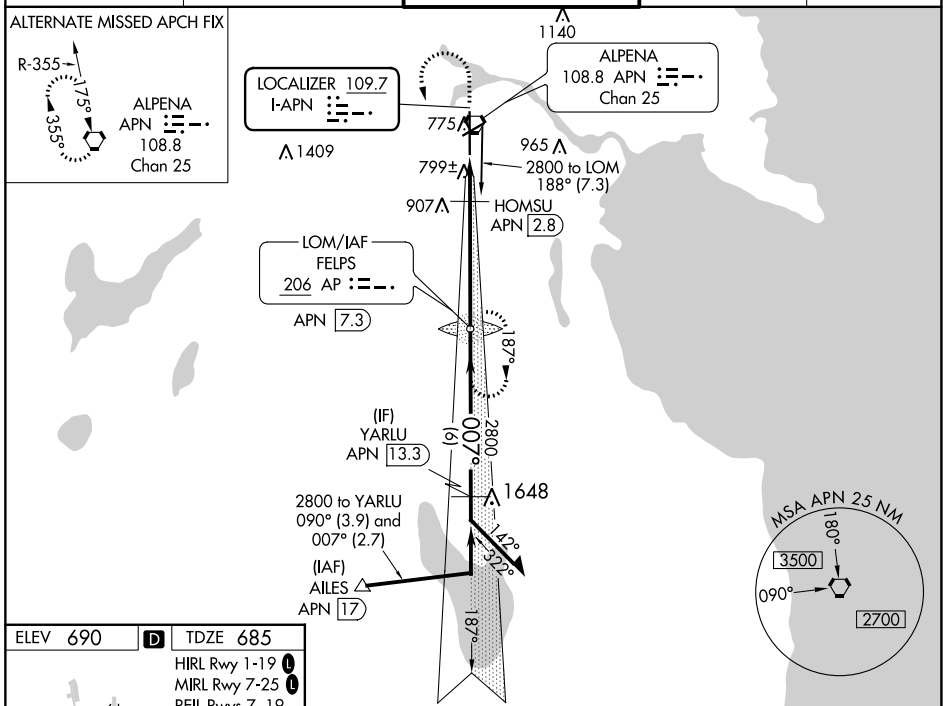


LOC I-APN <b>109.7</b>	APP CRS <b>007°</b>	Rwy Idg TDZE Apt Elev	<b>9001</b> <b>685</b> <b>690</b>
---------------------------	------------------------	-----------------------------	---

**ILS or LOC RWY 1**  
ALPENA COUNTY RGNL (APN)

ADF required.	MALSR 	MISSED APPROACH: Climb to 1100 then climbing left turn to 2800 direct AP LOM and hold.
For inop ALS, increase S-LOC 1 Cat C/D visibility to 1 1/2 SM.		

ATIS <b>120.675 327.05</b>	ALPENA APP CON * <b>128.425 379.3</b>	ALPENA TOWER * <b>121.35 (CTAF) 318.1</b>	GND CON <b>121.9 275.8</b>	UNICOM <b>122.95</b>
-------------------------------	--	--	-------------------------------	-------------------------



CATEGORY	A	B	C	D
S-ILS 1	885-1/2 200 (200-1/2)			
S-LOC 1	1260-1/2	575 (600-1/2)	1260-1 1/4	575 (600-1 1/4)
HOMSU FIX MINIMUMS				
S-LOC 1	1140-1/2 455 (500-1/2)			

EC-1, 22 FEB 2024 to 21 MAR 2024

EC-1, 22 FEB 2024 to 21 MAR 2024


WAAS CH <b>50310</b> <b>W01A</b>	APP CRS <b>007°</b>	Rwy Idg TDZE Apt Elev	<b>9001</b> <b>685</b> <b>690</b>
--	------------------------	-----------------------------	---

# RNAV (GPS) RWY 1

ALPENA COUNTY RGNL (APN)

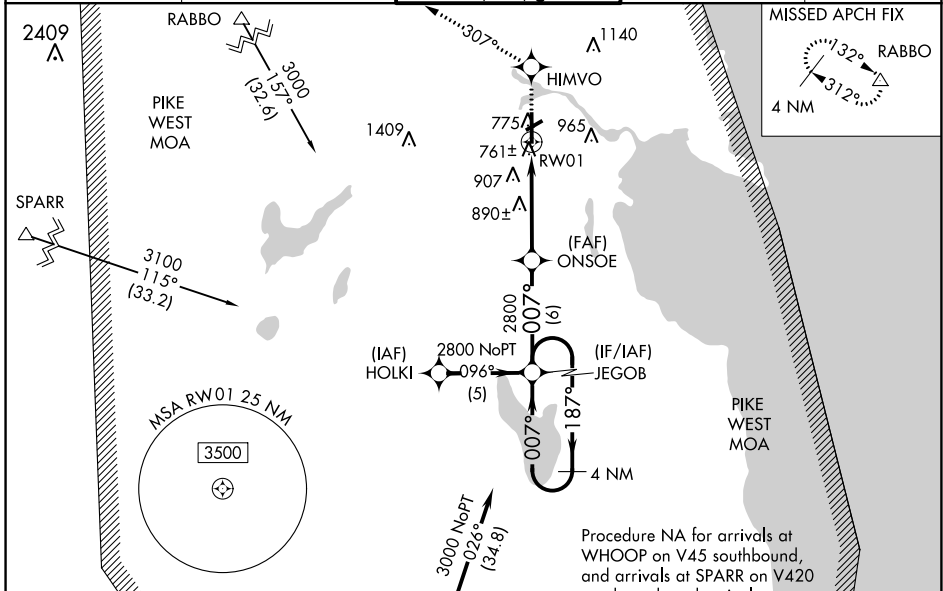
**RNP APCH.**

**⚠** For uncompensated Baro-VNAV systems, LNAV/VNAV NA below -16°C or above 48°C. When local altimeter setting not received, use Rogers City altimeter setting; increase all LPV DAs to 1029 feet, LNAV/VNAV DAs to 1084 feet and all MDAs 60 feet; increase LPV all Cats, LNAV/VNAV all Cats and LNAV Cats C and D visibility ½ SM. Baro-VNAV and VDP NA when using Roger City altimeter setting. For inop ALS, increase LPV all Cats visibility to 1 SM.

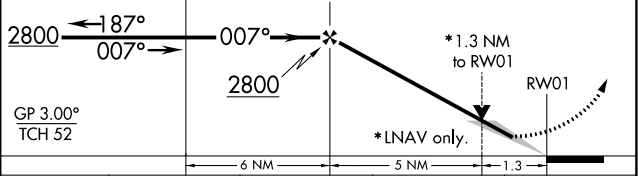
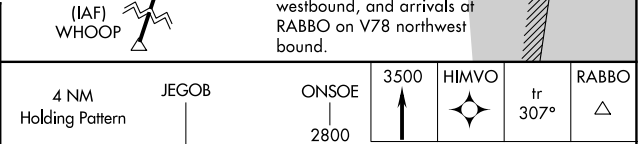
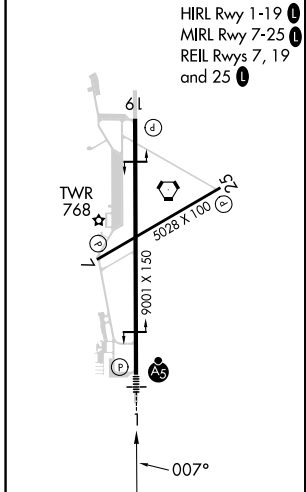
**MALSR** 

**MISSED APPROACH:** Climb to 3500 direct HIMVO and on track 307° to RABBO and hold.

ATIS <b>120.675</b>	ALPENA APP CON * <b>327.05</b>	ALPENA TOWER * <b>121.35 (CTAF) 0 318.1</b>	GND CON <b>121.9 275.8</b>	UNICOM <b>122.95</b>
------------------------	-----------------------------------	--	-------------------------------	-------------------------



ELEV 690	<b>D</b> TDZE 685
----------	-------------------



CATEGORY	A	B	C	D
LPV DA		974-½	289 (300-½)	
LNAV/VNAV DA		1029-¾	344 (400-¾)	
LNAV MDA	1160-½	475 (500-½)	1160-¾ 475 (500-¾)	1160-1 475 (500-1)
<b>C</b> CIRCLING	1160-1	470 (500-1)	1220-1½ 530 (600-1½)	1280-2 590 (600-2)

EC-1, 22 FEB 2024 to 21 MAR 2024

EC-1, 22 FEB 2024 to 21 MAR 2024

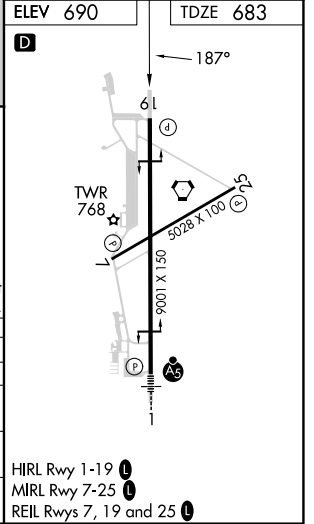
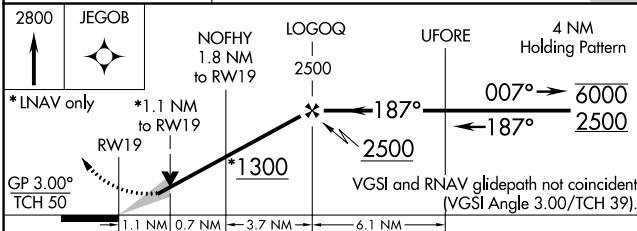
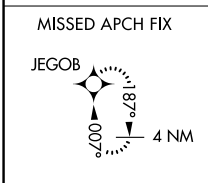
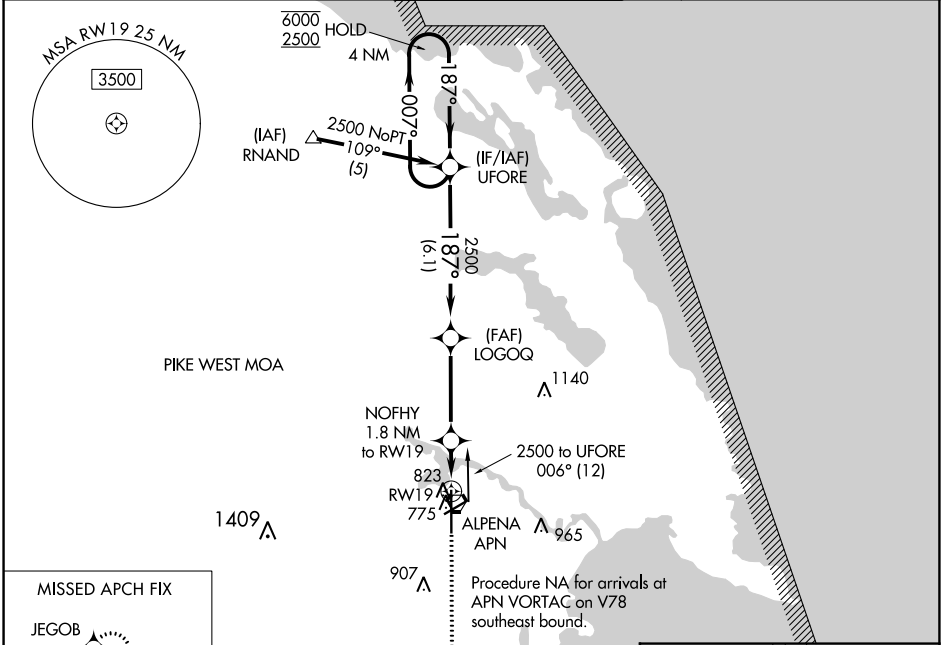
WAAS CH <b>53717</b> <b>W19A</b>	APP CRS <b>187°</b>	Rwy Idg <b>9001</b>
		TDZE <b>683</b>
		Apt Elev <b>690</b>

# RNAV (GPS) RWY 19

ALPENA COUNTY RGNL (APN)

RNP APCH:	For uncompensated Baro-VNAV systems, LNAV/VNAV NA below -16°C or above 54°C.	MISSED APPROACH: Climb to 2800 direct JEGOB and hold.
-----------	--	---

ATIS <b>120.675 327.05</b>	ALPENA APP CON * <b>128.425 379.3</b>	ALPENA TOWER * <b>121.35 (CTAF) 0 318.1</b>	GND CON <b>121.9 275.8</b>	UNICOM <b>122.95</b>
-------------------------------	--	--	-------------------------------	-------------------------



CATEGORY	A	B	C	D
LPV DA	933-3/4		250 (300-3/4)	
LNAV/VNAV DA	1020-1 1/4		337 (400-1 1/4)	
LNAV MDA	1080-1	397 (400-1)	1080-1 1/8	397 (400-1 1/8)
CIRCLING	1140-1	450 (500-1)	1220-1 1/2	1280-2
			530 (600-1 1/2)	590 (600-2)

EC-1, 22 FEB 2024 to 21 MAR 2024

EC-1, 22 FEB 2024 to 21 MAR 2024

VORTAC APN <b>108.8</b> Chan 25	APP CRS <b>175°</b>	Rwy Idg TDZE Apt Elev	<b>9001</b> <b>683</b> <b>690</b>
---------------------------------------	------------------------	-----------------------------	---

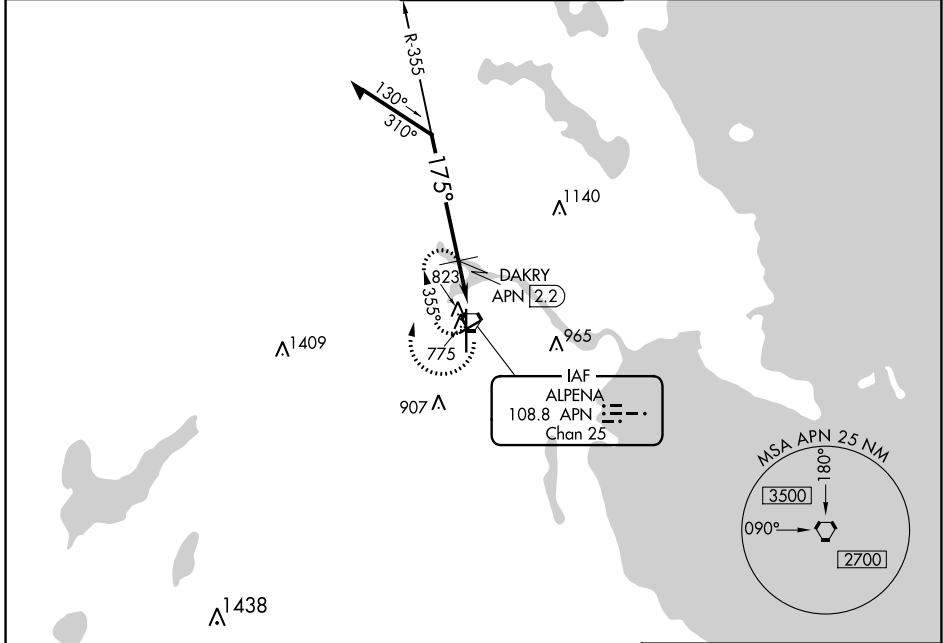
# VOR RWY 19

ALPENA COUNTY RGNL (APN)

**▼** Rwy 19 helicopter visibility reduction below 3/4 SM NA.

MISSED APPROACH: Climbing right turn to 2500 in APN VORTAC holding pattern.

ATIS <b>120.675 327.05</b>	ALPENA APP CON ★ <b>128.425 379.3</b>	ALPENA TOWER ★ <b>121.35 (CTAF) 0 318.1</b>	GND CON <b>121.9 275.8</b>	UNICOM <b>122.95</b>
-------------------------------	--	--	-------------------------------	-------------------------



EC-1, 22 FEB 2024 to 21 MAR 2024

EC-1, 22 FEB 2024 to 21 MAR 2024

Remain within 10 NM		APN VORTAC		2500	APN
VGSI and descent angles not coincident (VGSI Angle 3.00/TCH 39).		2500	355°	175°	3.18°
		1340	3.18°	TCH 55	0.6 NM
					1.2 NM
CATEGORY	A	B	C	D	
S-19	1340-1	657 (700-1)	1340-1 7/8	657 (700-1 7/8)	
<b>C</b> CIRCLING	1340-1	650 (700-1)	1340-1 7/8	1340-2	650 (700-2)
DAKRY FIX MINIMUMS					
S-19	1100-1	417 (500-1)	1100-1 1/8	417 (500-1 1/8)	
<b>C</b> CIRCLING	1140-1	450 (500-1)	1220-1 1/2	1280-2	590 (600-2)

