

TOP ALTITUDE: ASSIGNED BY ATC

TAKEOFF MINIMUMS:
Rwys 10, 35L/R: Standard.
Rwy 17L: Standard with minimum climb of 255' per NM to 8000.
Rwy 17R: Standard with minimum climb of 370' per NM to 8000.
Rwy 28: Standard with minimum climb of 300' per NM to 8000.

DENVER DEP CON
132.75 269.3
ATIS
120.3
CLNC DEL
128.6

ROCK SPRINGS
116.0 OCS
Chan 107

LARAMIE
117.6 LAR
Chan 123

CHEYENNE
113.1 CYS
Chan 78

SIDNEY
115.9 SNY
Chan 106

GILL
114.2 GLL
Chan 89

MILE HIGH
114.7 DVV
Chan 94

AKRON
114.4 AKO
Chan 91

KREMMLING
113.8 RLG
Chan 85

THURMAN
112.9 TXC
Chan 76

HAYES CENTER
117.7 HCT
Chan 124

MEEKER
115.2 EKR
Chan 99

DENVER
117.9 DEN
Chan 126

FALCON
116.3 FGF
Chan 110

GOODLAND
115.1 GLD
Chan 98

GRAND JUNCTION
112.4 JNC
Chan 71

BLACK FOREST
112.5 BRK
Chan 72

HUGO
112.1 HGO
Chan 58

BLUE MESA
114.9 HBU
Chan 96

PUEBLO
116.7 PUB
Chan 114

GARDEN CITY
113.3 GCK
Chan 80



NOTE: RADAR required.
NOTE: Chart not to scale.

(CONTINUED ON FOLLOWING PAGE)



DEPARTURE ROUTE DESCRIPTION

TAKEOFF ALL RUNWAYS: Fly assigned heading and altitude for RADAR vectors to assigned route. Expect filed altitude 10 minutes after departure.

RUNWAY 10: Climb heading 100° to 6600 before turning right.

LOST COMMUNICATIONS: If no transmissions are received within one minute after departure, maintain assigned heading until 7000 feet, then climb to filed altitude via direct DEN VOR/DME, thence via assigned route. If filed altitude is above 10000 feet, cross DEN VOR/DME at or above 11000 feet.

SW-1, 22 FEB 2024 to 21 MAR 2024

SW-1, 22 FEB 2024 to 21 MAR 2024

(ECHO01.ECHOO) 26MAR20

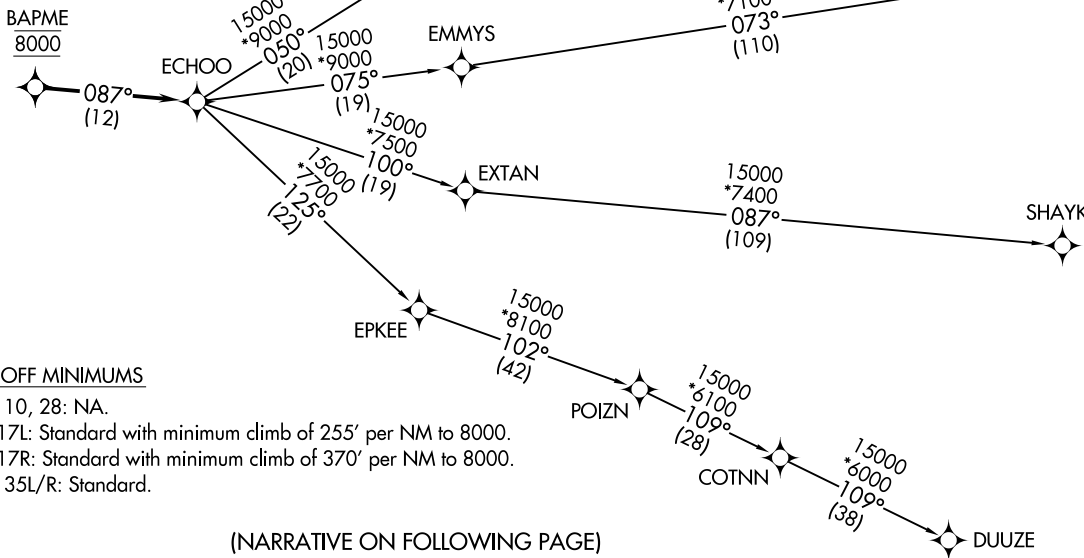
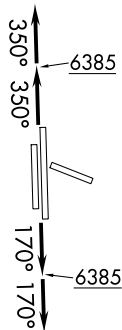
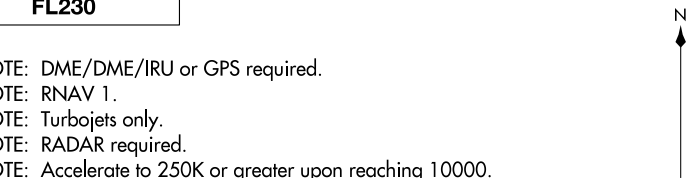
ECHOO ONE DEPARTURE (RNAV)

DENVER, COLORADO
CENTENNIAL (A/P)

**TOP ALTITUDE:
FL230**

- NOTE: DME/DME/IRU or GPS required.
- NOTE: RNAV 1.
- NOTE: Turbojets only.
- NOTE: RADAR required.
- NOTE: Accelerate to 250K or greater upon reaching 10000.
If slower speed is required to meet crossing restrictions advise CLNC DEL prior to taxi.

ATIS 120.3
CLNC DEL 128.6
DENVER DEP CON 132.75 269.3



TAKEOFF MINIMUMS

- Rwys 10, 28: NA.
- Rwy 17L: Standard with minimum climb of 255' per NM to 8000.
- Rwy 17R: Standard with minimum climb of 370' per NM to 8000.
- Rwys 35L/R: Standard.

NOTE: Chart not to scale.

(NARRATIVE ON FOLLOWING PAGE)

(ECHO01.ECHOO) 20086

ECHOO ONE DEPARTURE (RNAV)

AL-5715 (FAA)

CENTENNIAL (A/P)
DENVER, COLORADO



DEPARTURE ROUTE DESCRIPTION

TAKEOFF RUNWAYS 17L/R: Climb on heading 170° to 6385, then on heading 170° or as assigned by ATC. Thence. . . .

TAKEOFF RUNWAYS 35L/R: Climb on heading 350° to 6385, then on heading 350° or as assigned by ATC. Thence. . . .

. . . .expect RADAR vectors to cross BAPME at 8000 then on track 087° to ECHOO, then on (transition) maintain FL230 or filed lower altitude. Expect higher filed altitude ten minutes after departure.

DUUZE TRANSITION (ECHOO1.DUUZE)

SHAYK TRANSITION (ECHOO1.SHAYK)

WYNDM TRANSITION (ECHOO1.WYNDM)

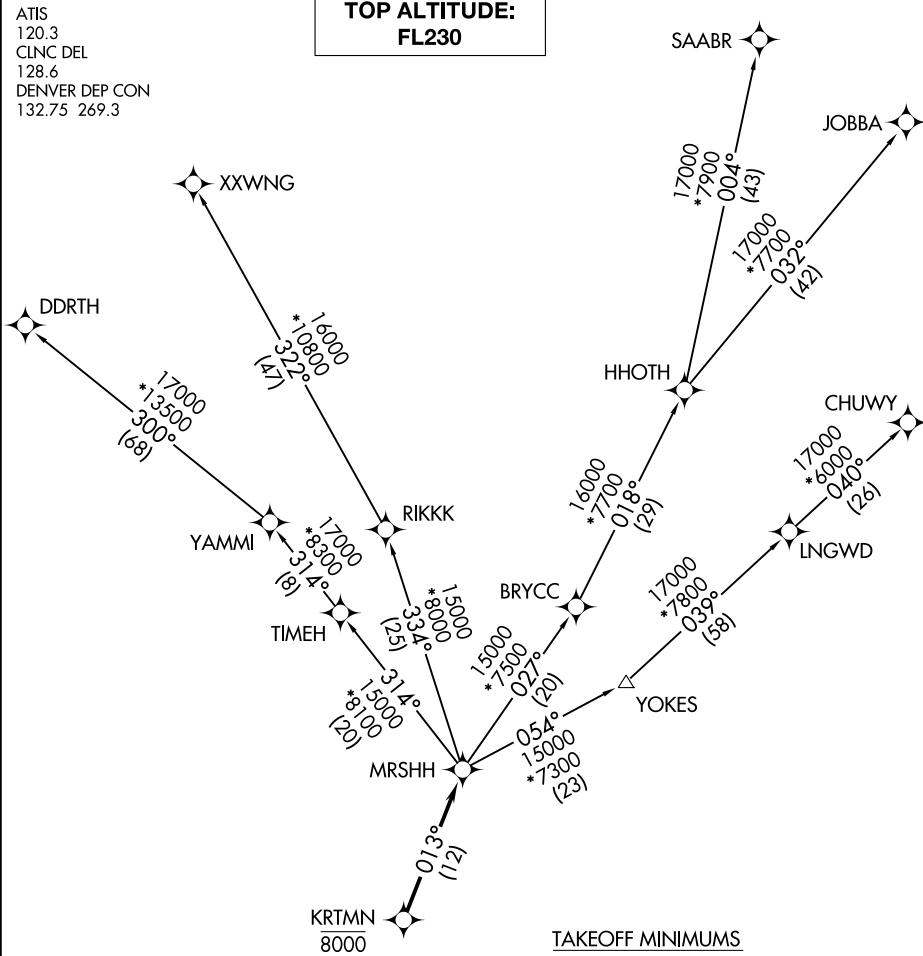
ZIRKL TRANSITION (ECHOO1.ZIRKL)

SW-1, 22 FEB 2024 to 21 MAR 2024

SW-1, 22 FEB 2024 to 21 MAR 2024

ATIS
120.3
CLINC DEL
128.6
DENVER DEP CON
132.75 269.3

**TOP ALTITUDE:
FL230**



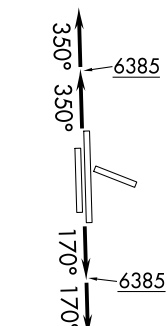
SW-1, 22 FEB 2024 to 21 MAR 2024

SW-1, 22 FEB 2024 to 21 MAR 2024

TAKEOFF MINIMUMS

- Rwys 10, 28: NA.
- Rwy 17L: Standard with minimum climb of 257' per NM to 8000.
- Rwy 17R: Standard with minimum climb of 372' per NM to 8000.
- Rwys 35L/R: Standard.

- NOTE: DME/DME/IRU or GPS required.
- NOTE: RNAV 1.
- NOTE: Turbojets only.
- NOTE: RADAR required.



NOTE: Chart not to scale.

(NARRATIVE ON FOLLOWING PAGE)



DEPARTURE ROUTE DESCRIPTION

TAKEOFF RUNWAYS 17L/R: Climb on heading 170° to 6385, then on heading 170° or as assigned by ATC. Thence. . . .

TAKEOFF RUNWAYS 35L/R: Climb on heading 350° to 6385, then on heading 350° or as assigned by ATC. Thence. . . .

. . . .expect RADAR vectors to cross KRTMN at 8000 then on track 013° to MRS HH, then on (transition) maintain FL230 or filed lower altitude. Expect higher filed altitude ten minutes after departure.

CHUWY TRANSITION (MRS HH2.CHUWY)

DDRTH TRANSITION (MRS HH2.DDRTH)

JOBBA TRANSITION (MRS HH2.JOBBA)

SAABR TRANSITION (MRS HH2.SAABR)

XXWNG TRANSITION (MRS HH2.XXWNG)

SW-1, 22 FEB 2024 to 21 MAR 2024

SW-1, 22 FEB 2024 to 21 MAR 2024

DENVER DEP CON
132.75 269.3
ATIS
120.3
CLNC DEL
128.6

**TOP ALTITUDE:
ASSIGNED BY ATC**

DENVER
117.9 DEN :...:
Chan 126

HUGO
112.1 HGO :...:
Chan 58

BLACK FOREST
112.5 BRK :...:
Chan 72

PUEBLO
116.7 PUB :...:
Chan 114

ALAMOS
113.9 ALS :...:
Chan 86

TAKEOFF MINIMUMS

- Rwys 10, 35L/R: Standard.
- Rwy 17L: Standard with minimum climb of 255' per NM to 8000.
- Rwy 17R: Standard with minimum climb of 370' per NM to 8000.
- Rwy 28: Standard with minimum climb of 300' per NM to 8000.

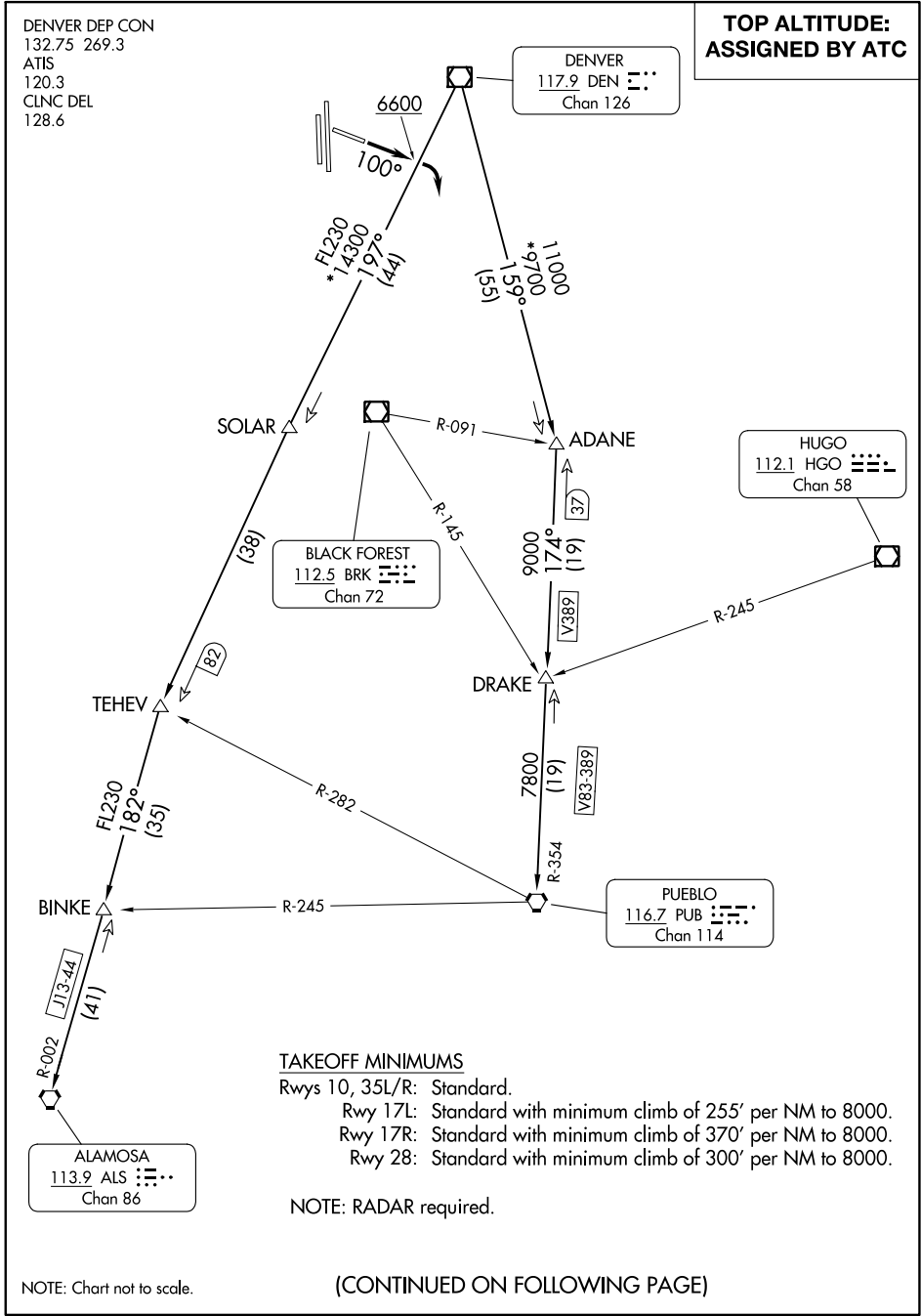
NOTE: RADAR required.

NOTE: Chart not to scale.

(CONTINUED ON FOLLOWING PAGE)

SW-1, 22 FEB 2024 to 21 MAR 2024

SW-1, 22 FEB 2024 to 21 MAR 2024





DEPARTURE ROUTE DESCRIPTION

TAKEOFF ALL RUNWAYS: Fly assigned heading and altitude for RADAR vectors to assigned route. Expect filed altitude 10 minutes after departure.

TAKEOFF RUNWAY 10: Climb on heading 100° to 6600 before turning right.

LOST COMMUNICATIONS: If no transmissions are received within one minute after departure, maintain assigned heading until 7000 feet, then climb to filed altitude via direct DEN VOR/DME, thence via assigned transition. If filed altitude is above 10000 feet, cross DEN VOR/DME at or above 11000 feet.

ALAMOSA TRANSITION (PIKES2.ALS): From over DEN VOR/DME on DEN R-197 to TEHEV, then on ALS R-002 to ALS VORTAC.

BINKE TRANSITION (PIKES2.BINKE): From over DEN VOR/DME on DEN R-197 to TEHEV, then on ALS R-002 to BINKE.

PUEBLO TRANSITION (PIKES2.PUB): From over DEN VOR/DME on DEN R-159 to ADANE, then on PUB R-354 to PUB VORTAC.

SW-1, 22 FEB 2024 to 21 MAR 2024

SW-1, 22 FEB 2024 to 21 MAR 2024

PLAINS ONE DEPARTURE
(PLAIN1.DEN) 30JAN20

PLAINS ONE DEPARTURE
23334

AL-5715 (FAA)

CENTENNIAL (A/P)
DENVER, COLORADO

DENVER DEP CON
132.75 269.3
ATIS
120.3
CLNC DEL
128.6

**TOP ALTITUDE:
ASSIGNED BY ATC**

AKRON
114.4 AKO
Chan 91

HAYES CENTER
117.7 HCT
Chan 124

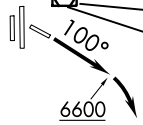
MC COOK
115.3 MCK
Chan 100

THURMAN
112.9 TXC
Chan 76

GOODLAND
115.1 GLD
Chan 98

GARDEN CITY
113.3 GCK
Chan 80

DENVER
117.9 DEN
Chan 126



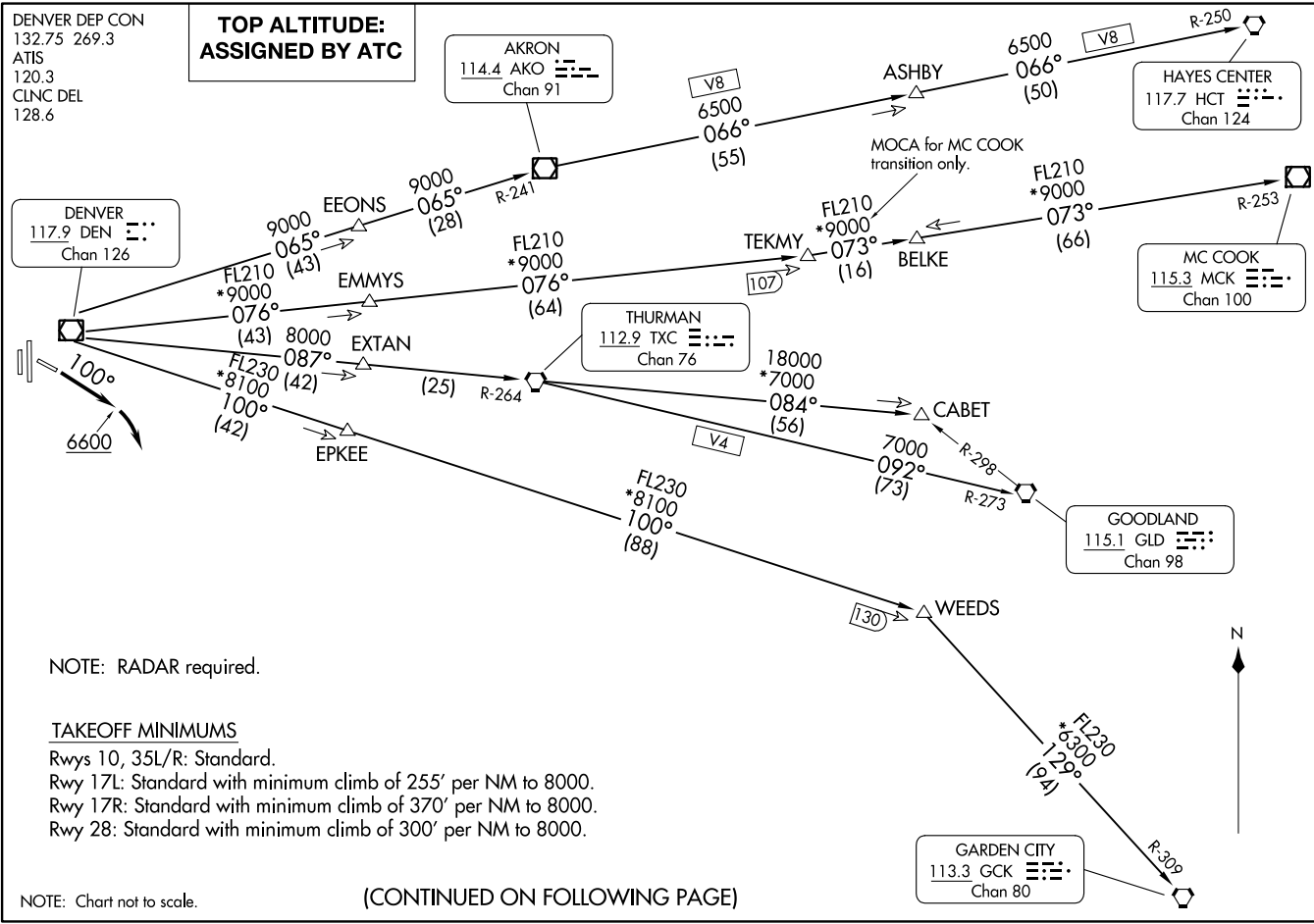
NOTE: RADAR required.

TAKEOFF MINIMUMS

- Rwys 10, 35L/R: Standard.
- Rwy 17L: Standard with minimum climb of 255' per NM to 8000.
- Rwy 17R: Standard with minimum climb of 370' per NM to 8000.
- Rwy 28: Standard with minimum climb of 300' per NM to 8000.

NOTE: Chart not to scale.

(CONTINUED ON FOLLOWING PAGE)





DEPARTURE ROUTE DESCRIPTION

TAKEOFF ALL RUNWAYS: Fly assigned heading and altitude for RADAR vectors to assigned route. Expect filed altitude 10 minutes after departure.

RUNWAY 10: Climb on heading 100° to 6600 before turning right.

LOST COMMUNICATIONS: If no transmissions are received within one minute after departure, maintain assigned heading until 7000 feet, then climb to filed altitude via direct DEN VOR/DME, thence via assigned transition. If filed altitude is above 10000 feet, cross DEN VOR/DME at or above 11000 feet.

AKRON TRANSITION (PLAIN1.AKO): From over DEN VOR/DME on DEN R-065 and AKO R-241 to AKO VOR/DME.

ASHBY TRANSITION (PLAIN1.ASHBY): From over DEN VOR/DME on DEN R-065 and AKO R-241 to AKO VOR/DME, then on AKO R-066 and HCT R-250 to ASHBY.

BELKE TRANSITION (PLAIN1.BELKE): From over DEN VOR/DME on DEN R-076 and MCK R-253 to BELKE INT.

CABET TRANSITION (PLAIN1.CABET): From over DEN VOR/DME on DEN R-087 and TXC R-264 to TXC VORTAC, then on TXC R-084 to CABET.

GARDEN CITY TRANSITION (PLAIN1.GCK): From over DEN VOR/DME on DEN R-100 and GCK R-309 to GCK VORTAC.

GOODLAND TRANSITION (PLAIN1.GLD): From over DEN VOR/DME on DEN R-087 and TXC R-264 to TXC VORTAC, then on TXC R-092 and GLD R-273 to GLD VORTAC.

HAYES CENTER TRANSITION (PLAIN1.HCT): From over DEN VOR/DME on DEN R-065 and AKO R-241 to AKO VOR/DME, then on AKO R-066 and HCT R-250 to HCT VORTAC.

MCCOOK TRANSITION (PLAIN1.MCK): From over DEN VOR/DME on DEN R-076 to TEKMY, then on MCK R-253 to MCK VOR/DME.

THURMAN TRANSITION (PLAIN1.TXC): From over DEN VOR/DME on DEN R-087 and TXC R-264 to TXC VORTAC.

WEEDS TRANSITION (PLAIN1.WEEDS): From over DEN VOR/DME on DEN R-100 to WEEDS.

SW-1, 22 FEB 2024 to 21 MAR 2024

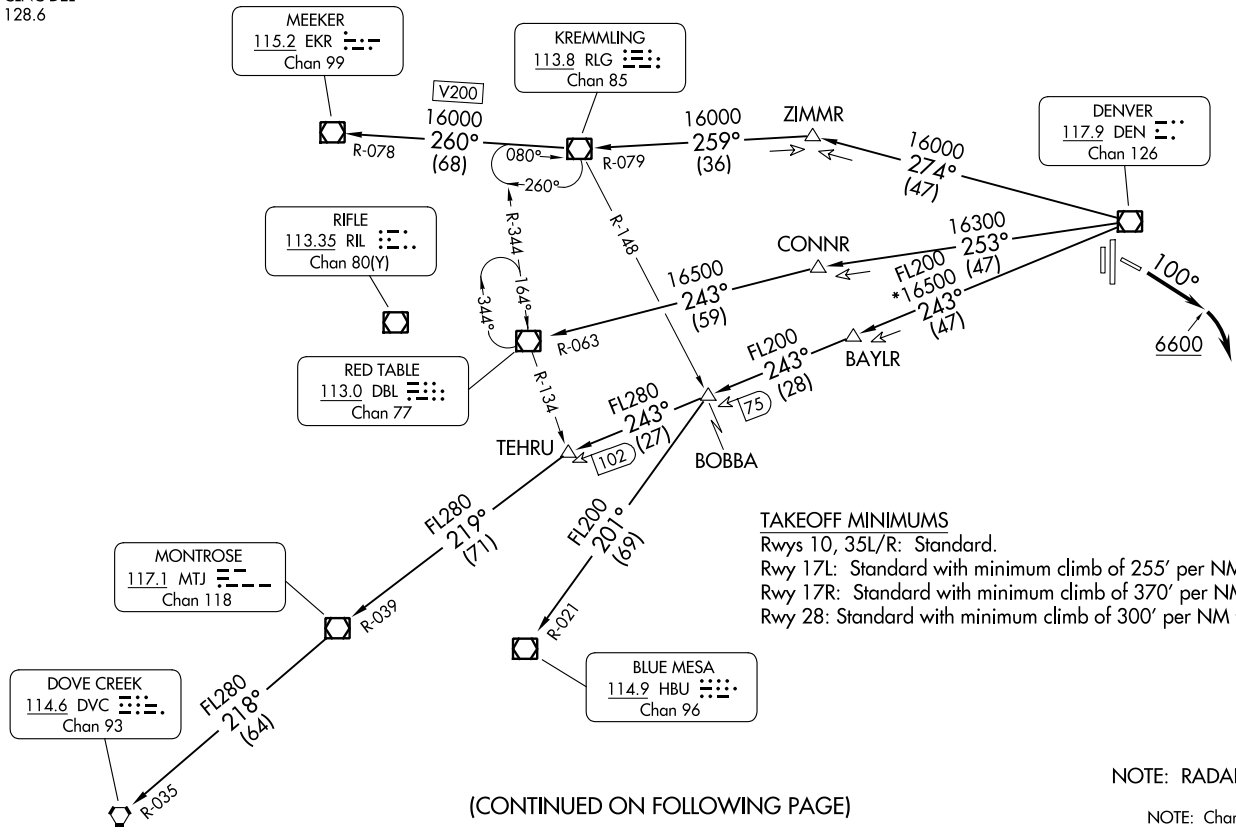
SW-1, 22 FEB 2024 to 21 MAR 2024

TOP ALTITUDE: ASSIGNED BY ATC

ROCKIES FIVE DEPARTURE
(ROCK15, DEN) 26MAR20
DENVER, COLORADO
CENTENNIAL (A/P A)

DENVER DEP CON
132.75 269.3
ATIS
120.3
CLNC DEL
128.6

(ROCK15, DEN) 23334
ROCKIES FIVE DEPARTURE
AL-5715 (FAA)
CENTENNIAL (A/P A)
DENVER, COLORADO



TAKEOFF MINIMUMS
 Rwsy 10, 35L/R: Standard.
 Rwy 17L: Standard with minimum climb of 255' per NM to 8000.
 Rwy 17R: Standard with minimum climb of 370' per NM to 8000.
 Rwy 28: Standard with minimum climb of 300' per NM to 8000.

(CONTINUED ON FOLLOWING PAGE)

NOTE: RADAR required.
NOTE: Chart not to scale.



DEPARTURE ROUTE DESCRIPTION

TAKEOFF ALL RUNWAYS: Fly assigned heading and altitude for RADAR vectors to assigned route. Expect filed altitude 10 minutes after departure.

RUNWAY 10: Climb heading 100° to 6600 before turning right.

LOST COMMUNICATIONS: If no transmissions are received within one minute after departure, maintain assigned heading until 7000 feet, then climb to filed altitude direct DEN VOR/DME, then on assigned transition. If filed altitude is above 10000 feet, cross DEN VOR/DME at or above 11000 feet.

BLUE MESA TRANSITION (ROCKI5.HBU): From over DEN VOR/DME on DEN R-243 and HBU R-021 to HBU VOR/DME.

DOVE CREEK TRANSITION (ROCKI5.DVC): From over DEN VOR/DME on DEN R-243 and MTJ R-039 to MTJ VOR/DME, then on MTJ R-218 and DVC R-035 to DVC VORTAC.

KREMMLING TRANSITION (ROCKI5.RLG): From over DEN VOR/DME on DEN R-274 and RLG R-079 to RLG VOR/DME.

MEEKER TRANSITION (ROCKI5.EKR): From over DEN VOR/DME on DEN R-274 and RLG R-079 to RLG VOR/DME, then on RLG R-260 and EKR R-078 to EKR VOR/DME.

MONTROSE TRANSITION (ROCKI5.MTJ): From over DEN VOR/DME on DEN R-243 and MTJ R-039 to MTJ VOR/DME.

RED TABLE TRANSITION (ROCKI5.DBL): From over DEN VOR/DME on DEN R-253 and DBL R-063 to DBL VOR/DME.

SW-1, 22 FEB 2024 to 21 MAR 2024

SW-1, 22 FEB 2024 to 21 MAR 2024

**TOP ALTITUDE:
FL230**

ATIS
120.3
CLNC DEL
128.6
DENVER DEP CON
132.75 269.3

SATLE
8000

1.60°
(12)

350°

350°

6385

SKYEE

FL180
*9900
(37)

FL180
*9800
(34)

(31)

14200

170°

170°

6385

14200

172°

170°

14200

FL230

18800

189°

189°

FL230

14300

189°

189°

189°

189°

189°

189°

189°

189°

189°

189°

189°

189°

189°

189°

189°

SOLAR
14200

SCAGS
14200

SHOJO

STAKR

SMMUR
17000

FRNKE
FL230

SABTH

AZARO

DAAYE

SUDDZ

JOPLN

SLEEK

VRONI

NOTE: DME/DME/IRU or GPS required.

NOTE: RNAV 1.

NOTE: Turbojets only.

NOTE: RADAR required.

TAKEOFF MINIMUMS

Rwys 10, 28: NA.

Rwy 17L: Standard with minimum climb of 255' per NM to 8000.

Rwy 17R: Standard with minimum climb of 370' per NM to 8000.

Rwys 35L/R: Standard.

(NARRATIVE ON FOLLOWING PAGE)

NOTE: Chart not to scale.



DEPARTURE ROUTE DESCRIPTION

TAKEOFF RUNWAYS 17L/R: Climb on heading 170° to 6385, then on heading 170° or as assigned by ATC. Thence. . . .

TAKEOFF RUNWAYS 35L/R: Climb on heading 350° to 6385, then on heading 350° or as assigned by ATC. Thence. . . .

. . . .expect RADAR vectors to cross SATLE at 8000 then on track 160° to SKYEE then on (transition) maintain FL230 or filed lower altitude. Expect higher filed altitude ten minutes after departure.

DAAYE TRANSITION (SKYEE1 .DAAYE)

JOPLN TRANSITION (SKYEE1 .JOPLN)

SLEEK TRANSITION (SKYEE1 .SLEEK)

SUDDZ TRANSITION (SKYEE1 .SUDDZ)

VRONI TRANSITION (SKYEE1 .VRONI)

SW-1, 22 FEB 2024 to 21 MAR 2024

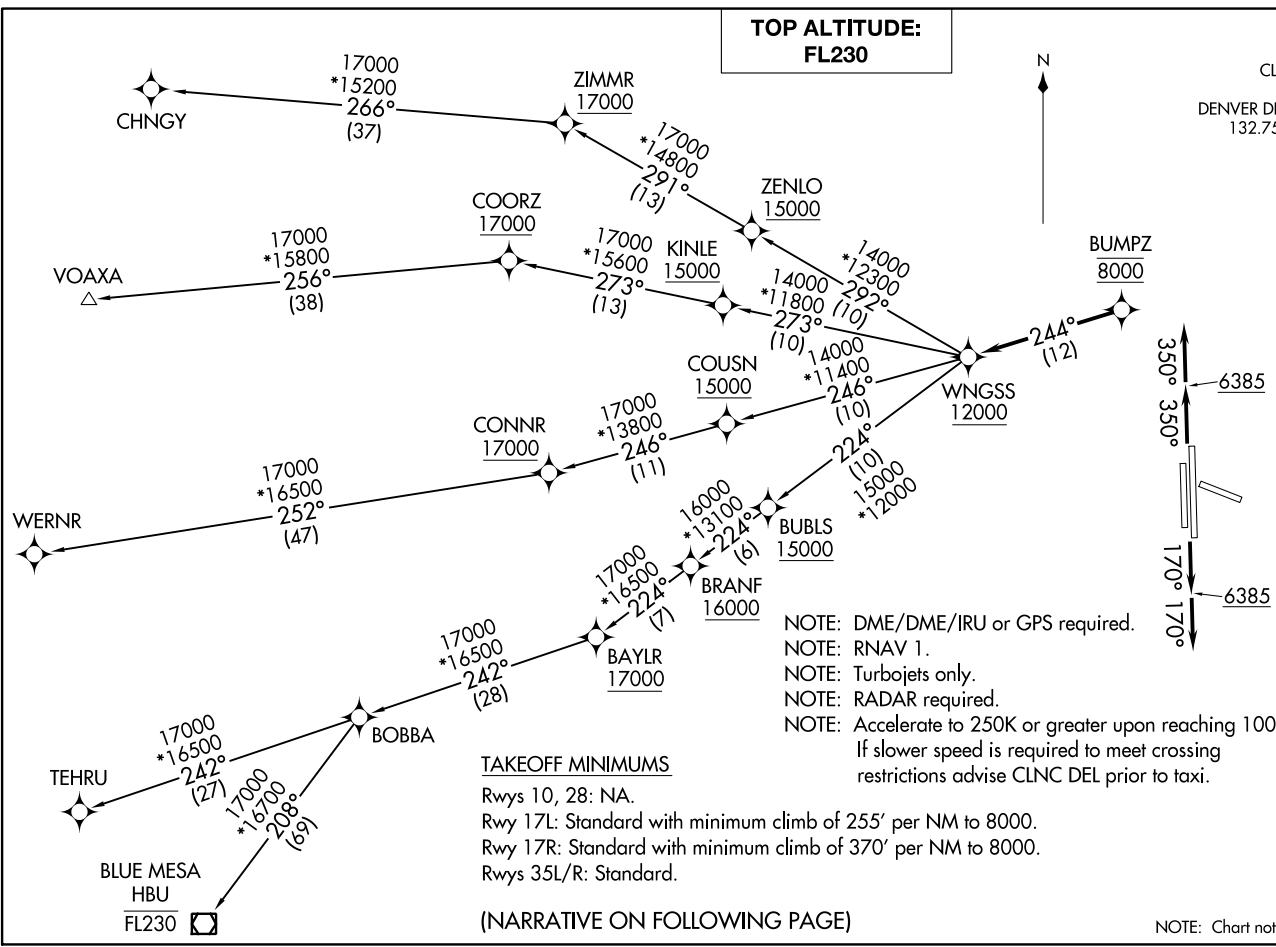
SW-1, 22 FEB 2024 to 21 MAR 2024

WNGSS ONE DEPARTURE (RNAV) (WNGSS1.WNGSS) 26MAR20 DENVER, COLORADO CENTENNIAL (A/P) (A)

(WNGSS1.WNGSS) 20086 WNGSS ONE DEPARTURE (RNAV) AL-5715 (FAA) CENTENNIAL (A/P) DENVER, COLORADO

**TOP ALTITUDE:
FL230**

ATIS 120.3
CLNC DEL 128.6
DENVER DEP CON 132.75 269.3



(NARRATIVE ON FOLLOWING PAGE)



DEPARTURE ROUTE DESCRIPTION

TAKEOFF RUNWAYS 17L/R: Climb on heading 170° to 6385, then on heading 170° or as assigned by ATC. Thence. . . .

TAKEOFF RUNWAYS 35L/R: Climb on heading 350° to 6385, then on heading 350° or as assigned by ATC. Thence. . . .

. . . .expect RADAR vectors to cross BUMPZ at 8000 then on track 244° to cross WNGSS at or above 12000 then on (transition) maintain FL230 or filed lower altitude. Expect higher filed altitude ten minutes after departure.

BLUE MESA TRANSITION (WNGSS1.HBU)

CHNGY TRANSITION (WNGSS1.CHNGY)

TEHRU TRANSITION (WNGSS1.TEHRU)

VOAXA TRANSITION (WNGSS1.VOAXA)

WERNR TRANSITION (WNGSS1.WERNR)

SW-1, 22 FEB 2024 to 21 MAR 2024

SW-1, 22 FEB 2024 to 21 MAR 2024

YELLOWSTONE FOUR DEPARTURE
(YELLOW4.DEN) 16JUL20

(YELLOW4.DEN) 23334
YELLOWSTONE FOUR DEPARTURE

AL-5715 (FAA)

CENTENNIAL (A/P A)
DENVER, COLORADO

DENVER DEP CON
132.75 269.3
ATIS
120.3
CLNC DEL
128.6

MEDICINE BOW
116.85 MBW
Chan 115(Y)

RAPID CITY
112.3 RAP
Chan 70

SCOTTSBLUFF
112.6 BFF
Chan 73

CHEYENNE
113.1 CYS
Chan 78

LARAMIE
117.6 LAR
Chan 123

GILL
114.2 GLL
Chan 89

DENVER
117.9 DEN
Chan 126

NATTI

HANKI

YAMMI
12000 (For MEDICINE BOW transition only)

YALES

COPLA

YOKES

MOCA for HANKI transition only.

TOP ALTITUDE:
ASSIGNED BY ATC

TAKEOFF MINIMUMS

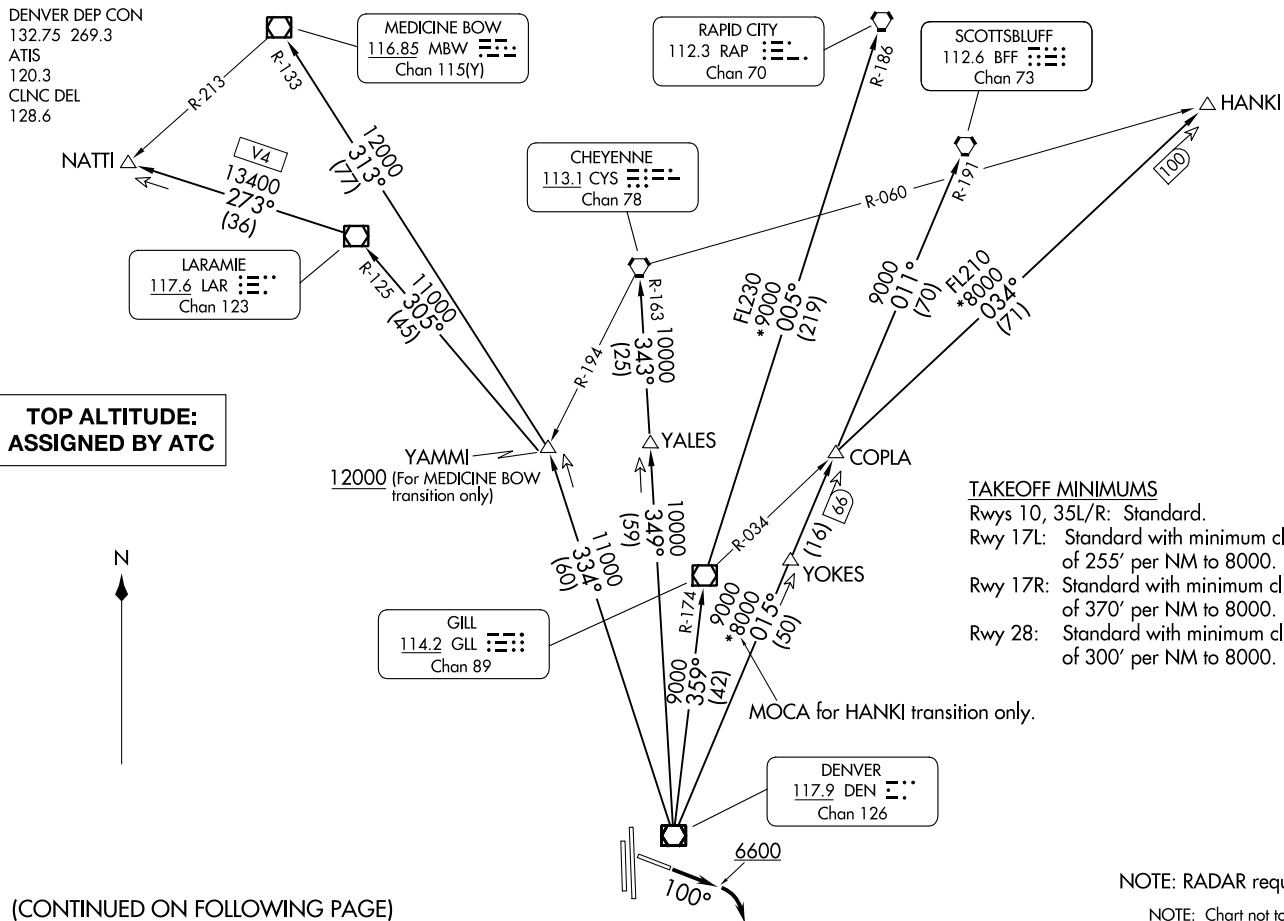
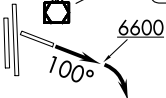
- Rwys 10, 35L/R: Standard.
- Rwy 17L: Standard with minimum climb of 255' per NM to 8000.
- Rwy 17R: Standard with minimum climb of 370' per NM to 8000.
- Rwy 28: Standard with minimum climb of 300' per NM to 8000.

NOTE: RADAR required.

NOTE: Chart not to scale.

(CONTINUED ON FOLLOWING PAGE)

DENVER, COLORADO
CENTENNIAL (A/P A)





DEPARTURE ROUTE DESCRIPTION

TAKEOFF ALL RUNWAYS: Fly assigned heading and altitude for RADAR vectors to assigned transition. Expect filed altitude 10 minutes after departure.

RUNWAY 10: Climb heading 100° to 6600 before turning right.

LOST COMMUNICATIONS: If no transmissions are received within one minute after departure, maintain assigned heading until 7000 feet, then climb to filed altitude direct DEN VOR/DME, then on assigned transition. If filed altitude is above 10000 feet, cross DEN VOR/DME at or above 11000 feet.

CHEYENNE TRANSITION (YELLOW4.CYS): From over DEN VOR/DME on DEN R-349 and CYS R-163 to CYS VORTAC.

HANKI TRANSITION (YELLOW4.HANKI): From over DEN VOR/DME on DEN R-015 and GLL R-034 to HANKI.

LARAMIE TRANSITION (YELLOW4.LAR): From over DEN VOR/DME on DEN R-334 and LAR R-125 to LAR VOR/DME.

MEDICINE BOW TRANSITION (YELLOW4.MBW): From over DEN VOR/DME on DEN R-334 and MBW R-133 to MBW VOR/DME.

NATTI TRANSITION (YELLOW4.NATTI): From over DEN VOR/DME on DEN R-334 and LAR R-125 to LAR VOR/DME, then on LAR R-273 to NATTI.

RAPID CITY TRANSITION (YELLOW4.RAP): From over DEN VOR/DME on DEN R-359 and GLL R-174 to GLL VOR/DME, then on GLL R-005 and RAP R-186 to RAP VORTAC.

SCOTTSBLUFF TRANSITION (YELLOW4.BFF): From over DEN VOR/DME on DEN R-015 and BFF R-191 to BFF VORTAC.

SW-1, 22 FEB 2024 to 21 MAR 2024

SW-1, 22 FEB 2024 to 21 MAR 2024