

# DELMA FOUR ARRIVAL (RNAV)

AL-46 (FAA)

BELLEVILLE, ILLINOIS

ST LOUIS APP CON

128.1 307.05

ALN ATIS

128.0

BLV/KBLV ATIS \*

128.7 256.7

CPS ATIS

121.45

SUS ATIS

134.8

ST. LOUIS RGNL

CARDINAL CSX



039°

349°

3000 (34)

039°

EMKAA

080°

FOSKU

051°

3000 (26)

051°

3000 (27)

051°

3000 (34)

084°

ESSAR

085°

3000 (10)

084°

HOLLT

033°

SPIRIT OF ST. LOUIS



349°

DERDF

347°

3000 (151)

347°

MMRSN

026°

3000 (11)

026°

DELMA

VERTICAL NAVIGATION

PLANNING INFORMATION

Expect 13000

NOTE: DME/DME/IRU or GPS required.

NOTE: RNAV 1.

NOTE: RADAR required.

NOTE: Chart not to scale.

## ARRIVAL ROUTE DESCRIPTION

**SPIRIT OF ST. LOUIS:**

**LANDING RUNWAYS 8L/R:** From DELMA on track 026° to MMRSN, then on track 347° to DERDF. Expect RADAR vectors to final approach. If no heading received, track 349°.

**LANDING RUNWAYS 26L/R:** From DELMA on track 026° to MMRSN, then on track 051° to EMKAA. Expect RADAR vectors to final approach. If no heading received, track 349°.

**ST. LOUIS DOWNTOWN:**

**LANDING RUNWAY 12R:** From DELMA on track 026° to MMRSN, then on track 051° to FOSKU. Expect RADAR vectors to final approach. If no heading received, track 080°.

**LANDING RUNWAYS 30L/R:** From DELMA on track 026° to MMRSN, then on track 084° to ESSAR, then on track 085° to HOLLT. Expect RADAR vectors to final approach. If no heading received, track 033°.

**SCOTT AFB/MIDAMERICA ST LOUIS:**

**LANDING RUNWAYS 14L/R, 32L/R:** From DELMA on track 026° to MMRSN, then on track 084° to ESSAR. Expect RADAR vectors to final approach. If no heading received, track 084°.

**ST. LOUIS RGNL:**

**LANDING RUNWAYS 11, 17, 29, 35:** From DELMA on track 026° to MMRSN, then on track 039° to CSX DME. Expect RADAR vectors to final approach course. If no heading received, track 039°.

# DELMA FOUR ARRIVAL (RNAV)

BELLEVILLE, ILLINOIS

EC-3, 22 FEB 2024 to 21 MAR 2024

EC-3, 22 FEB 2024 to 21 MAR 2024

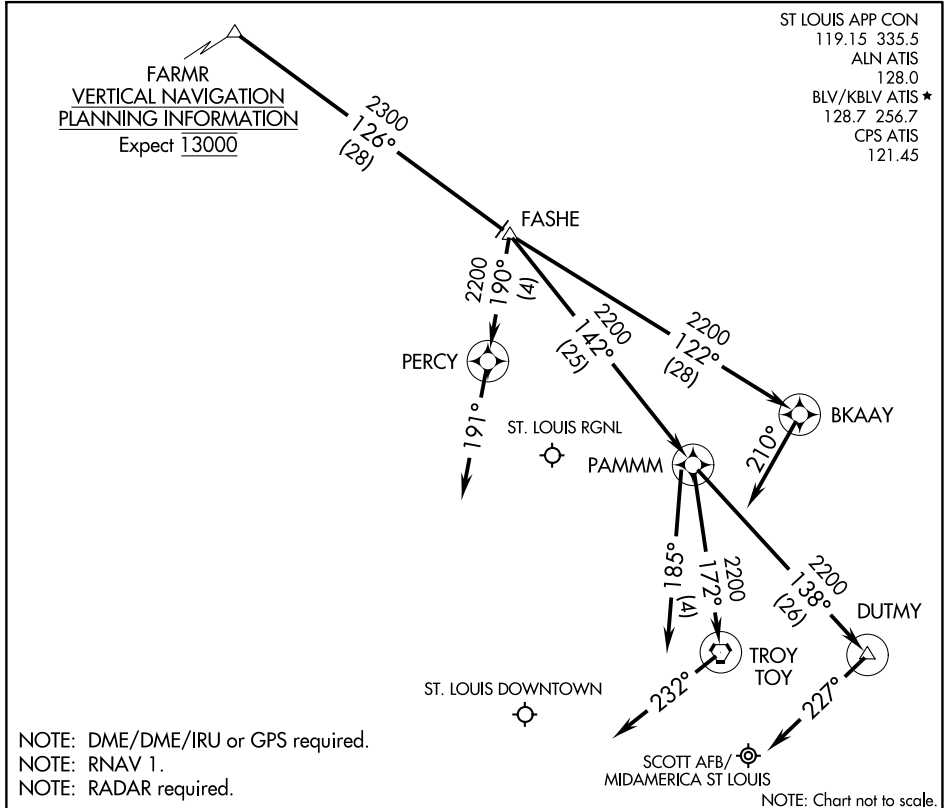
# FARMR THREE ARRIVAL (RNAV)

AL-46 (FAA)

BELLEVILLE, ILLINOIS

**FARMR**  
VERTICAL NAVIGATION  
PLANNING INFORMATION  
Expect 13000

ST LOUIS APP CON  
119.15 335.5  
ALN ATIS  
128.0  
BLV/KBLV ATIS ★  
128.7 256.7  
CPS ATIS  
121.45



NOTE: Chart not to scale.

## ARRIVAL DESCRIPTION

### ST. LOUIS DOWNTOWN:

**LANDING RWY 12R, 30L/R:** From FARMR on track 126° to FASHE, then on track 142° to PAMMM. Expect radar vector prior to PAMMM. If no heading received, track 185°.

### SCOTT AFB/MIDAMERICA ST LOUIS:

**LANDING RWYS 14L/R:** From FARMR on track 126° to FASHE, then on track 142° to PAMMM, then on track 172° to TOY VORTAC. Expect RADAR vector prior to TOY VORTAC. If no heading received, track 232°.

**LANDING RWYS 32L/R:** From FARMR on track 126° to FASHE, then on track 142° to PAMMM, then on track 138° to DUTMY. Expect radar vector prior to DUTMY. If no heading received, track 227°.

### ST. LOUIS RGNL:

**LANDING RWY 11:** From FARMR on track 126° to FASHE, then on track 190° to PERCY. Expect radar vector prior to PERCY. If no heading received, track 191°.

**LANDING RWY 29:** From FARMR on track 126° to FASHE, then on track 122° to BKAAY. Expect radar vector prior to BKAAY. If no heading received, track 210°.

# FARMR THREE ARRIVAL (RNAV)

BELLEVILLE, ILLINOIS