

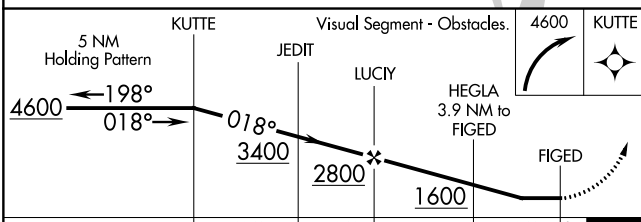
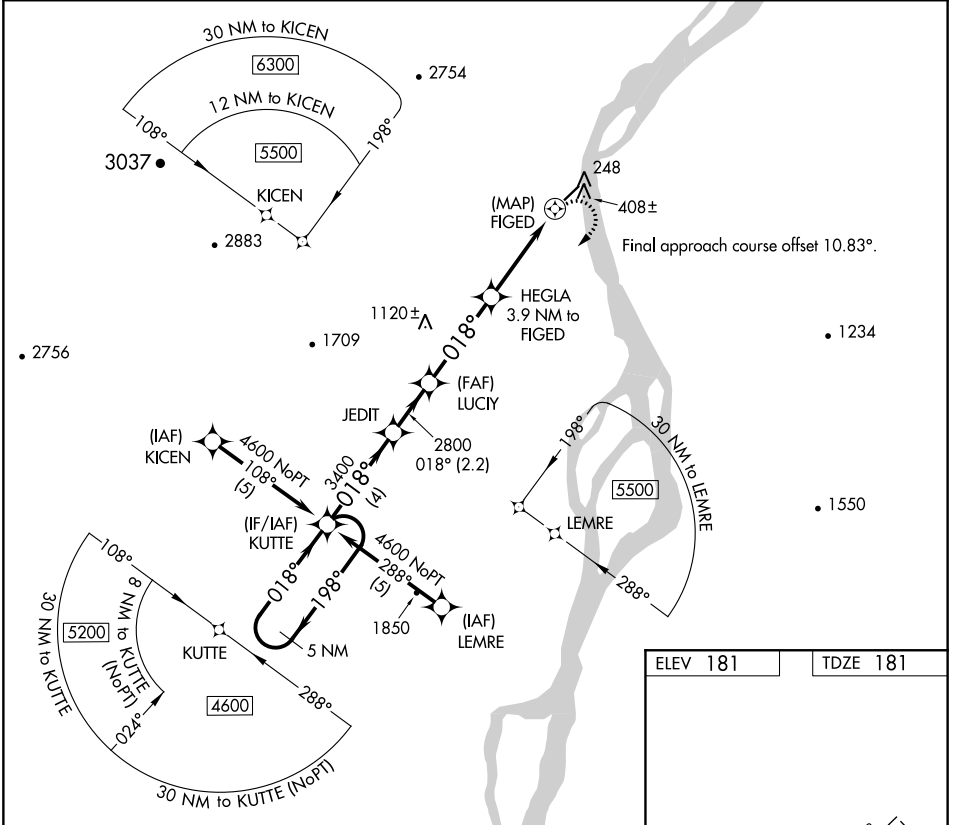
APP CRS	Rwy Idg	3986
018°	TDZE	181
	Apt Elev	181

RNAV (GPS) RWY 3

KALTAG (KAL)(PAKV)

DME/DME RNP-0.3 NA. Helicopter visibility reduction below 1 SM NA. Night Landing: Rwy 3 NA.	MISSED APPROACH: Climbing right turn to 4600 direct KUTTE and hold.
---	---

AWOS-3 135.25	ANCHORAGE CENTER 127.0 290.2	CTAF 122.9 0
-------------------------	--	------------------------



ELEV 181	TDZE 181
----------	----------

CATEGORY	A	B	C	D
LNVA MDA	1280-1¼ 1099 (1100-1¼)	1280-1½ 1099 (1100-1½)	1280-3 1099 (1100-3)	NA
CIRCLING	1280-1¼ 1099 (1100-1¼)	1280-1½ 1099 (1100-1½)	1280-3 1099 (1100-3)	NA

MIRL Rwy 3-21 0

AK, 25 JAN 2024 to 21 MAR 2024

AK, 25 JAN 2024 to 21 MAR 2024