

LOC I-AIZ 111.5	APP CRS 217°	Rwy Idg 6497
		TDZE 869
		Apt Elev 869

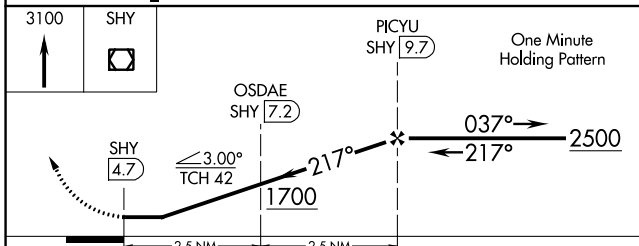
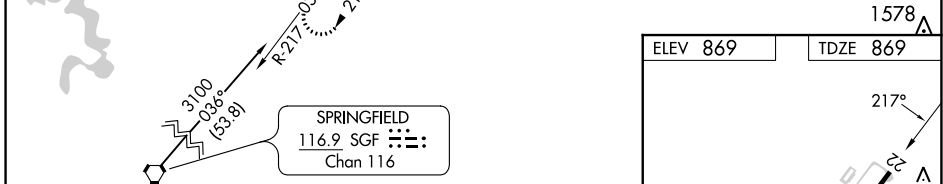
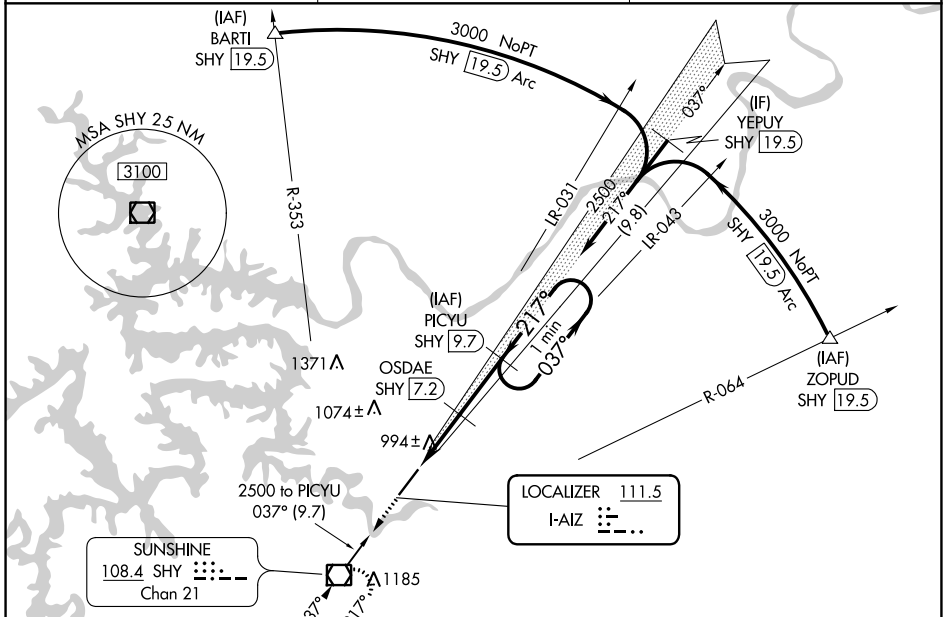
LOC/DME RWY 22

LEE C FINE MEML (AIZ)

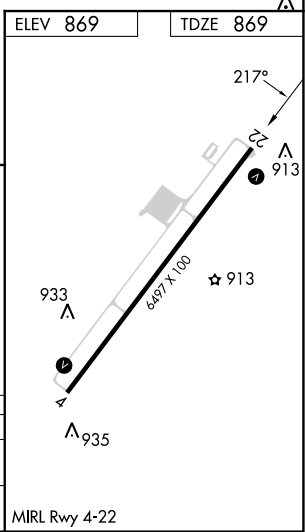
NA When local altimeter setting not received, use Camden ton altimeter setting and increase all MDAs 60 feet, increase S-22 Cat C and Circling Cat C visibility ¼ SM. Helicopter visibility reduction below 1 SM NA. DME from SHY VOR/DME. Simultaneous reception of I-AIZ and SHY VOR/DME required.

MISSED APPROACH: Climb to 3100 direct SHY VOR/DME and hold, continue climb-in-hold to 3100.

AWOS-3PT 135.325	MIZZU APP CON 124.1 353.925	UNICOM 122.8 (CTAF) 0
----------------------------	---------------------------------------	---------------------------------



CATEGORY	A	B	C	D
S-22	1260-1 391 (400-1)		1260-1½ 391 (400-1½)	NA
CIRCLING	1320-1 451 (500-1)	1380-1 511 (600-1)	1440-1½ 571 (600-1½)	NA



NC-3, 22 FEB 2024 to 21 MAR 2024

NC-3, 22 FEB 2024 to 21 MAR 2024

WAAS CH 72732 W22A	APP CRS 217°	Rwy Idg TDZE Apt Elev	6497 869 869
--	------------------------	-----------------------------	---

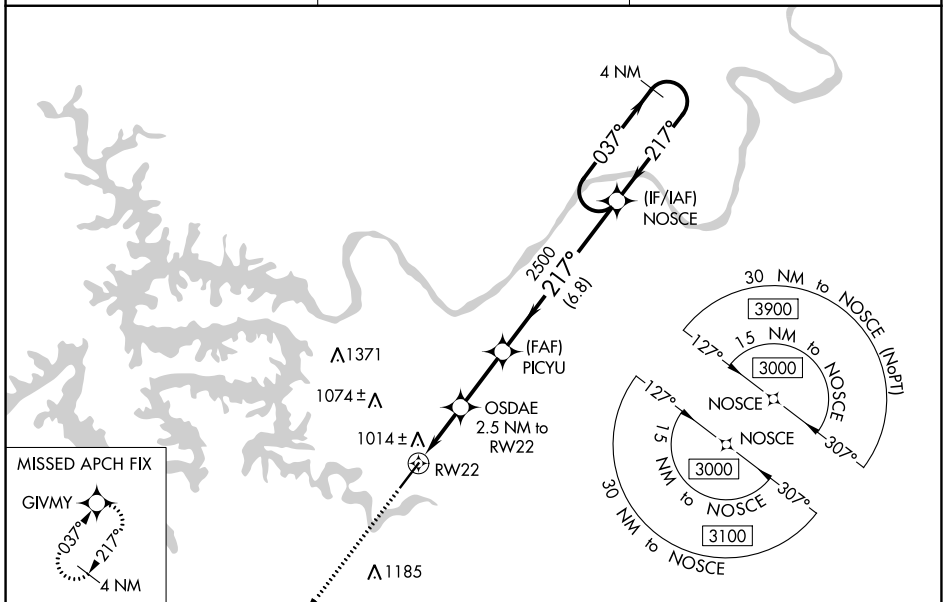
RNAV (GPS) RWY 22

LEE C FINE MEML (AIZ)

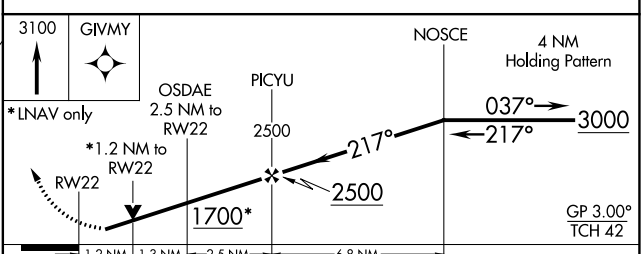
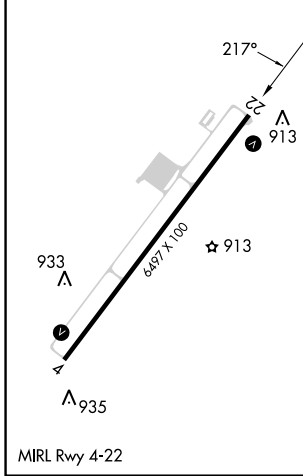
⚠ For uncompensated Baro-VNAV systems, LNAV/VNAV NA below -16°C or above 54°C.
⚠ DME/DME RNP-0.3 NA. Helicopter visibility reduction below 1 SM NA. When local altimeter setting not received, use Camdenton altimeter setting and increase all DAs 50 feet and all MDAs 60 feet, increase LNAV/VNAV all Cats visibility 1/8 SM and LNAV Cat C and Circling Cat C 1/4 SM. Baro-VNAV and VDP NA with Camdenton altimeter setting.

MISSED APPROACH: Climb to 3100 direct GIVMY and hold.

AWOS-3PT 135.325	MIZZU APP CON 124.1 353.925	UNICOM 122.8 (CTAF)
----------------------------	---------------------------------------	-------------------------------



ELEV 869	TDZE 869
----------	----------



CATEGORY	A	B	C	D
LPV DA		1119-1	250 (300-1)	NA
LNAV/VNAV DA		1164-1	295 (300-1)	NA
LNAV MDA	1280-1	411 (500-1)	1280-1 1/8 411 (500-1 1/8)	NA
CIRCLING	1320-1 451 (500-1)	1380-1 511 (600-1)	1440-1 1/2 571 (600-1 1/2)	NA

NC-3, 22 FEB 2024 to 21 MAR 2024

NC-3, 22 FEB 2024 to 21 MAR 2024

WAAS CH 65901 W04A	APP CRS 037°	Rwy Idg TDZE 863 Apt Elev 869	6497
--	------------------------	---	-------------

RNAV (GPS) RWY 4

LEE C FINE MEML (AIZ)

RNP APCH.

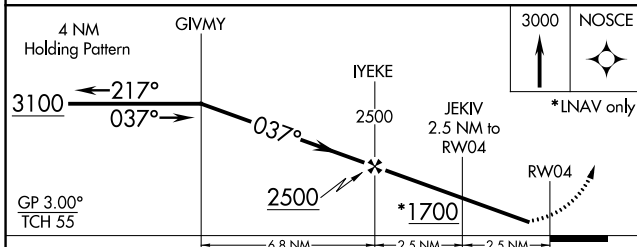
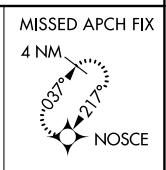
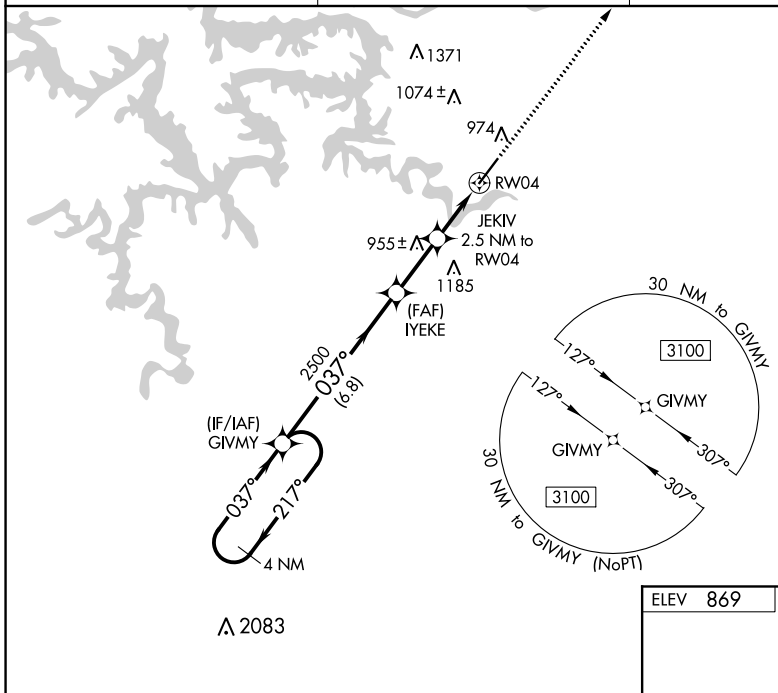
⚠ For uncompensated Baro-VNAV systems, LNAV/VNAV NA below -16°C or above 54°C. Procedure NA at night. Rwy 4 helicopter visibility reduction below 1 SM NA. When local altimeter setting not received, use Camdenton altimeter setting and increase all DA 50 feet, all MDA 60 feet, and LNAV Cat C visibility 1/8 mile. Baro-VNAV NA when using Camdenton altimeter setting.

MISSED APPROACH: Climb to 3000 direct NOSCE and hold.

AWOS-3PT
135.325

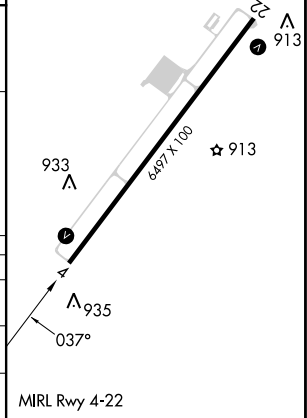
MISSOURI APP CON
124.1 353.925

UNICOM
122.8 (CTAF)



ELEV 869	TDZE 863
----------	----------

CATEGORY	A	B	C	D
LPV DA	1127-1	264 (300-1)		NA
LNAV/VNAV DA	1113-1	250 (300-1)		NA
LNAV MDA	1220-1	357 (400-1)		NA



NC-3, 22 FEB 2024 to 21 MAR 2024

NC-3, 22 FEB 2024 to 21 MAR 2024

VOR/DME SHY 108.4 Chan 21	APP CRS 037°	Rwy Idg 6497 TDZE 863 Apt Elev 869
--	------------------------	---

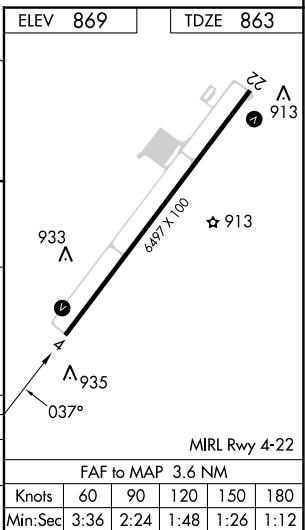
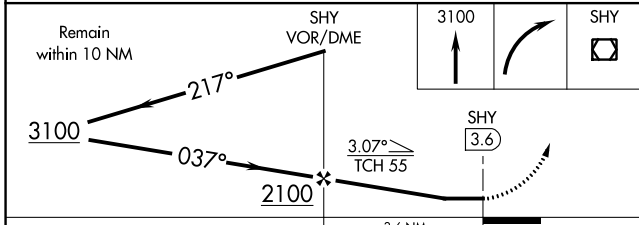
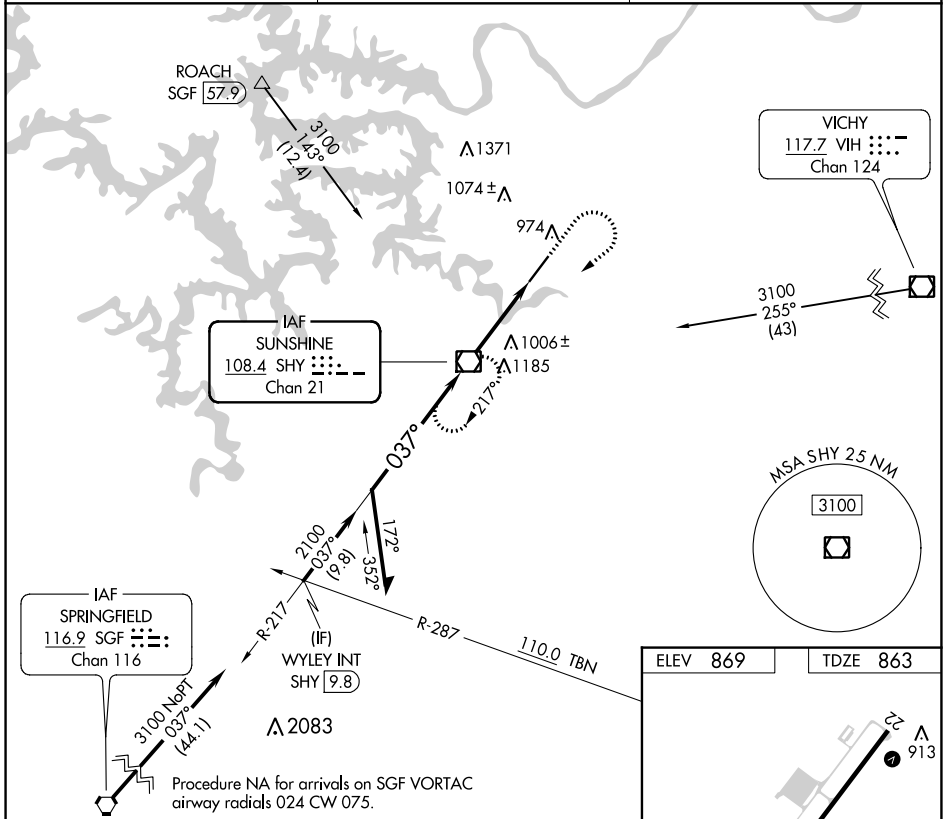
VOR RWY 4

LEE C FINE MEML (AIZ)

⚠ Straight-in minimums NA at night. Helicopter visibility reduction below 1 SM NA. When local altimeter setting not received, use Camdenton altimeter setting and increase all MDAs 60 feet and S-4 Cat C and Circling Cat C visibility ¼ SM.

⚠ MISSED APPROACH: Climb to 3100 then right turn direct SHY VOR/DME and hold.

AWOS-3PT 135.325	MIZZU APP CON 124.1 353.925	UNICOM 122.8 (CTAF) 0
----------------------------	---------------------------------------	---------------------------------



CATEGORY	A	B	C	D
S-4	1260-1	397 (400-1)	1260-1½ 397 (400-1½)	NA
CIRCLING	1320-1 451 (500-1)	1380-1 511 (600-1)	1440-1½ 571 (600-1½)	NA

NC-3, 22 FEB 2024 to 21 MAR 2024

NC-3, 22 FEB 2024 to 21 MAR 2024