

ILS Rwy 19R (CAT II & III)

AL-561 [USAF]

JOINT BASE ANDREWS (KADW)

LOC -HMXK	APCH CRS	Req'd Idg	274
111.5	190°	TDZE	274
		Appt Elev	280

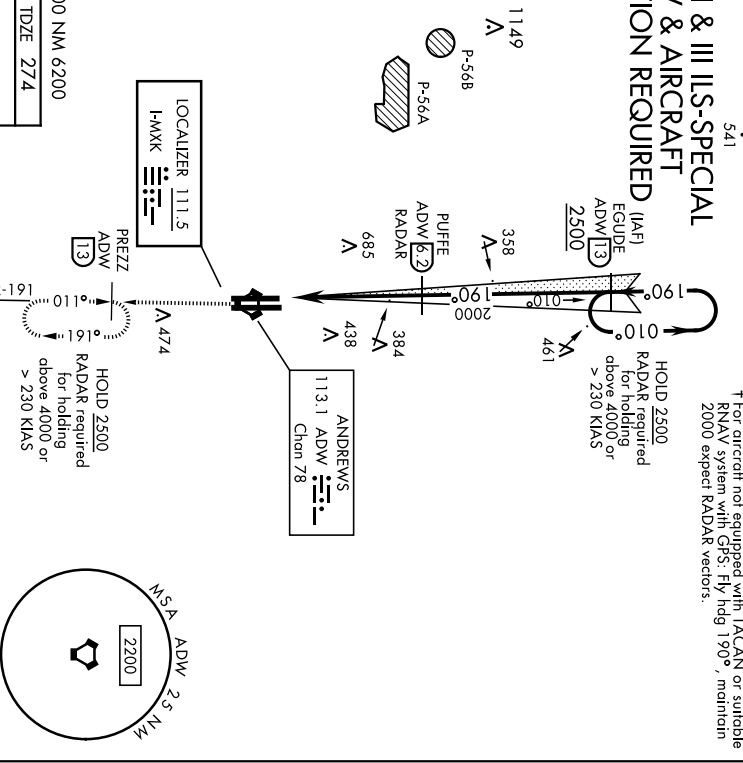
RADAR or DME required.

A	AISF-2	TOWER	GND CON	CINC DEL	CPDLC
	ADW VORTAC R-191 to PREZZ and hold.				

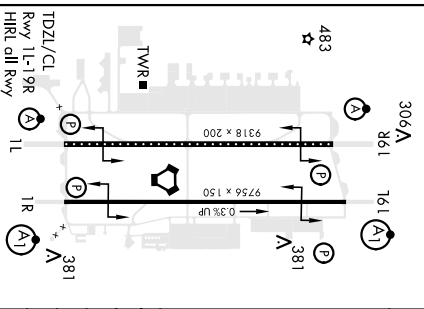
AIS	POTOMAC App CON	TOWER	GND CON	CINC DEL	CPDLC
133.675	251.05	128.0	121.8	275.8	127.55
	395.5	118.4	349.0	121.8	285.475

† For aircraft not equipped with TACAN or suitable RNAV system with GPS: Fly hdg 190°, maintain 2000 expect RADAR vectors.

CATEGORY II & III ILS-SPECIAL AIRCREW & AIRCRAFT CERTIFICATION REQUIRED



EMERG SAFE ALT 100 NM 6200
ELEV 280 TDZE 274



SS 3.00°	EGUDE				
TCH 55	13	62	13	13	13
	190°	190°	190°	190°	190°
	2500	2000	2500	2500	2500
	VORTAC				
	VGS1 and ILS glidepath not coincident (VGS1 Angle 3.00/TCH 71°).				
CATEGORY	A	B	C	D	E
S-ILS 19R	CAT II	RA 99/12	100	DA 374	
S-ILS 19R	CAT IIIa	RVR 07			
S-ILS 19R	CAT IIIb	RVR 06			
S-ILS 19R	CAT IIIc	NA			

ILS Rwy 19R (CAT II & III)

ILS Rwy 1L (CAT II & III)

AL-561 [USAF]

JOINT BASE ANDREWS (KADW)

LOC I-RWYS 111.5	APCH CRS 010°	Rwy/Idg TDZE Appt Elev 261 280
----------------------------	-------------------------	--

RADAR or DME required.

▲ AISF-2 	MISSED APPROACH: Climbing to 2500, Intercept ADW VORTAC R-009 to EGUDE and hold.	
	TOWER 128.0 335.5	GND CON 121.8 275.8

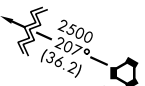
AITS 133.675 251.05	POTOMAC APP CON 128.0 335.5	TOWER 118.4 349.0	GND CON 121.8 275.8	CINC DEL 127.55 285.475	CPDLC
-------------------------------	---------------------------------------	-----------------------------	-------------------------------	-----------------------------------	-------

541 CATEGORY II & III ILS SPECIAL AIRCREW & AIRCRAFT CERTIFICATION REQUIRED

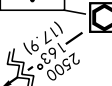
HOLD 2500
 RADAR required
 for holding
 above 4000 or
 > 230 KIAS
 EGUDE
 ADW
 > 230 KIAS

TACAN unusable
for feeder route

115.1 BAL
 Chon 98



111.5
 LOCALIZER
 I-RWYS
 Chon 47



111.0 DCA
 Chon 47



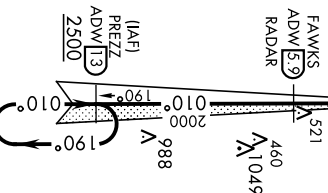
113.1 ADW
 Chon 78



† For aircraft not equipped with TACAN
 or suitable RNAV system with GPS:
 climbing right turn to 2000 heading
 050°, expect RADAR vectors.

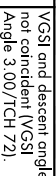


HOLD 2500
 RADAR required
 for holding
 above 4000 or
 > 230 KIAS



EMERG SAFE ALT 100 NM 6200

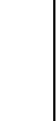
2500
 EGUDE
 ADW
 R-009
 Angle 3.00/TCH 721.



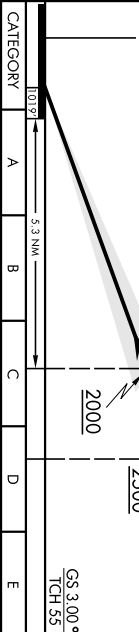
FAWKES
 RADAR
5.9



PREZZ
1.3

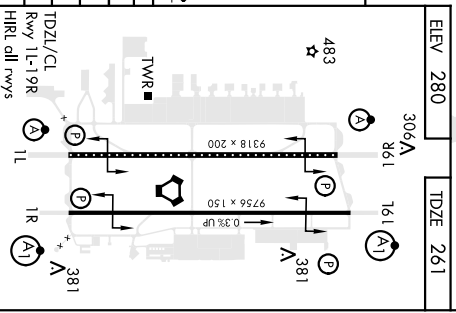


VORTAC



GS 3.00°
 TCH 55

CATEGORY	A	B	C	D	E
SILS 1L				DA 361	
SILS 1L		CAT II	RA 108/12	100	DA 361
SILS 1L			CAT IIIa		RVR 07
SILS 1L			CAT IIIb		RVR 06
SILS 1L			CAT IIIc		NA



CAMP SPRINGS, MARYLAND
 Orig 06OCT22

38° 49' N - 76° 52' W

JOINT BASE ANDREWS (KADW) ILS Rwy 1L (CAT II & III)

CAMP SPRINGS, MARYLAND

ILS or LOC RWY 19L

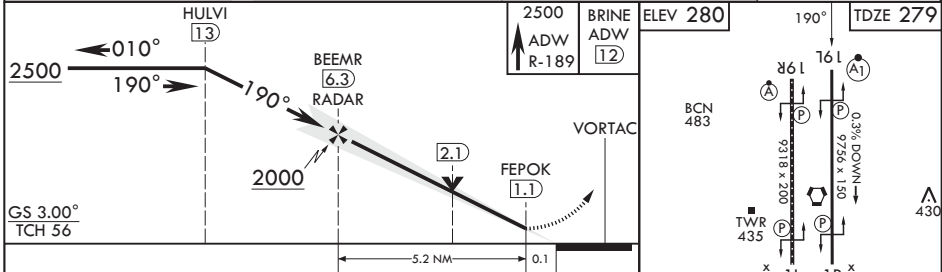
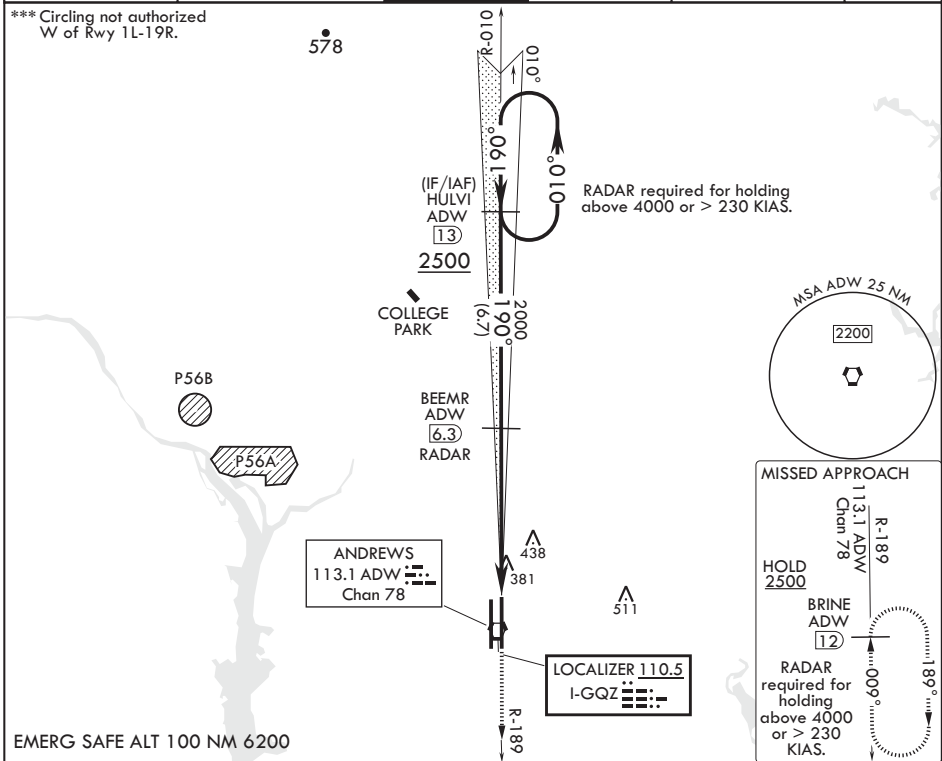
LOC I-GQZ 110.5	APCH CRS 190°	Rwy ldg TDZE Arprt Elev 9756 279 280
---------------------------	-------------------------	---

AL-561 (USAF)

JOINT BASE ANDREWS (KADW)

RADAR or DME required at FAF.		ALS-F1	MISSED APPROACH: Climb to 2500 via ADW R-189 to BRINE/ADW 12 DME and hold.		
* When ALS inop, increase RVR to 40, vis to 3/4. ** When ALS inop, increase CAT AB RVR to 55, vis to 1 mile; CAT CDE RVR to 60, vis to 1 1/8 mile.		(A1)			

ATIS 133.675 251.05	POTOMAC APP CON 128.0 335.5	TOWER 118.4 349.0	GND CON 121.8 275.8	CLNC DEL 127.55 285.475	CPDLC
-------------------------------	---------------------------------------	-----------------------------	-------------------------------	-----------------------------------	-------



CATEGORY	A	B	C	D	E
S-ILS 19L*	479/24		200	(200-1/2)	
S-LOC 19L**	680/24	401 (400-1/2)	680/40	401	(400-3/4)
C CIRCLING***	780-1	500 (500-1)	780-1 1/2	840-2	560 (600-2)

HIRL all Rwys TDZL/CL Rwys 1L, 19R

FAF to MAP 5.2 NM					
Knots	60	90	120	150	180
Min:Sec	5:12	3:28	2:36	2:05	1:44

CAMP SPRINGS, MARYLAND

38°49'N - 76°52'W

JOINT BASE ANDREWS (KADW)

Amdt 1 18MAY23

ILS or LOC RWY 19L

NE-3, 22 FEB 2024 to 21 MAR 2024

NE-3, 22 FEB 2024 to 21 MAR 2024

CAMP SPRINGS, MARYLAND

ILS or LOC RWY 19R

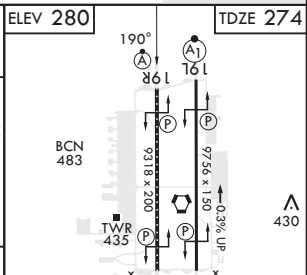
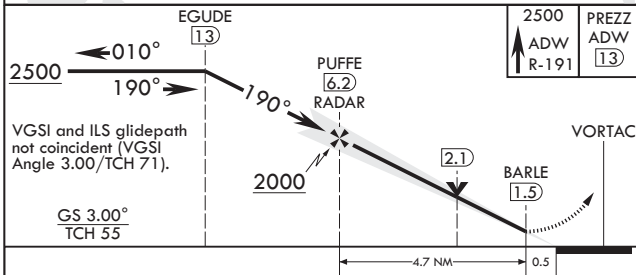
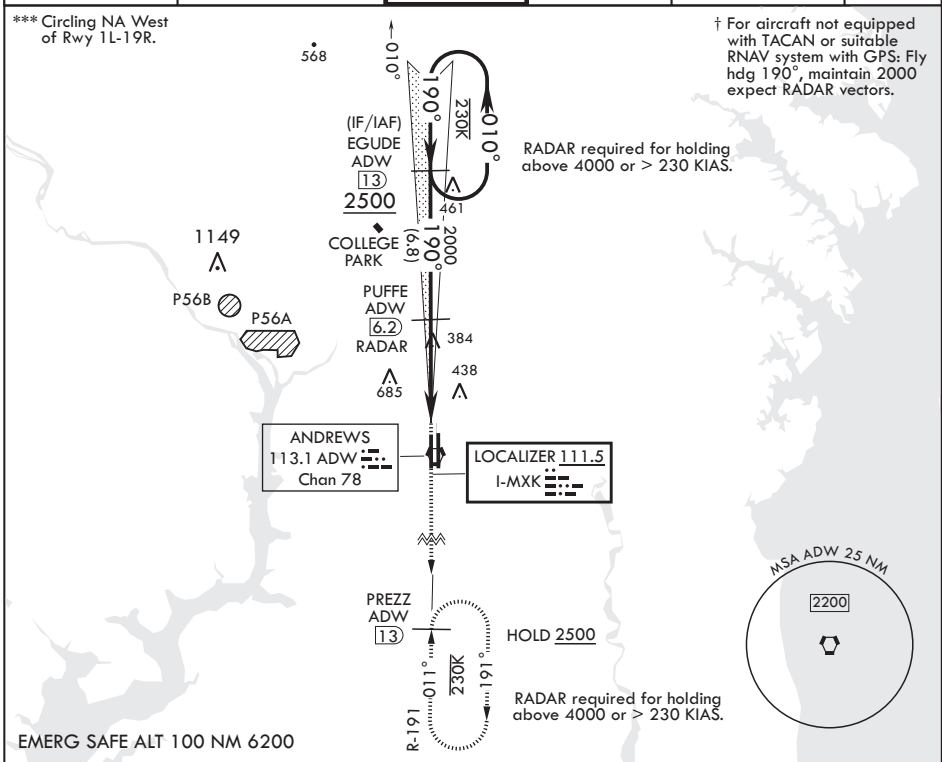
LOC I-MXK 111.5	APCH CRS 190°	Rwy Idg TDZE Arprt Elev	9318 274 280
---------------------------	-------------------------	-------------------------------	---

AL-561 (USAF)

JOINT BASE ANDREWS (KADW)

RADAR or DME required.		ALS-F-2	† MISSED APPROACH: Climb to 2500, intercept ADW VORTAC R-191 to PREZZ and hold.
▼ * When ALS inop, increase RVR to 40, vis to 3/4 mile. When TDZL/CL inop, increase RVR to 24. ** When ALS inop, increase CAT AB RVR to 55, vis to 1 mile, CAT CDE RVR to 60, vis to 1 1/8 miles.			

ATIS 133.675 251.05	POTOMAC APP CON 128.0 335.5	TOWER 118.4 349.0	GND CON 121.8 275.8	CLNC DEL 127.55 285.475	CPDLC
-------------------------------	---------------------------------------	-----------------------------	-------------------------------	-----------------------------------	-------



CATEGORY	A	B	C	D	E
S-ILS 19R*	474/18		200	(200-½)	
S-LOC 19R**	660/24	386 (400-½)	660/35	386	(400-¾)
☐ CIRCLING***	780-1	500 (500-1)	780-1½ 500 (500-1½)	840-2	560 (600-2)

HIRL all Rwys TDZL/CL Rwys 1L, 19R					
FAF to MAP 4.7 NM					
Knots	60	90	120	150	180
Min:Sec	4:42	3:08	2:21	1:53	1:34

CAMP SPRINGS, MARYLAND
Amdt 4 06OCT22

38°49'N - 76°52'W

JOINT BASE ANDREWS (KADW)

ILS or LOC RWY 19R

NE-3, 22 FEB 2024 to 21 MAR 2024

NE-3, 22 FEB 2024 to 21 MAR 2024

CAMP SPRINGS, MARYLAND

ILS or LOC RWY 1L

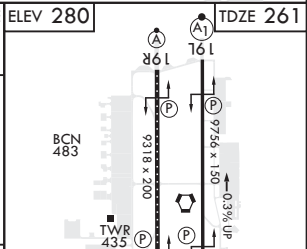
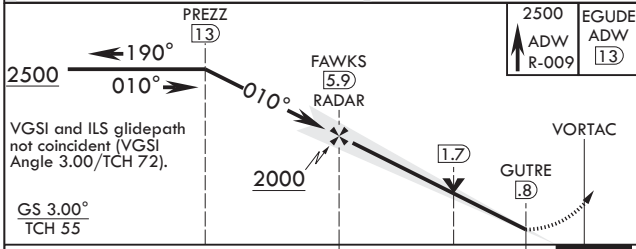
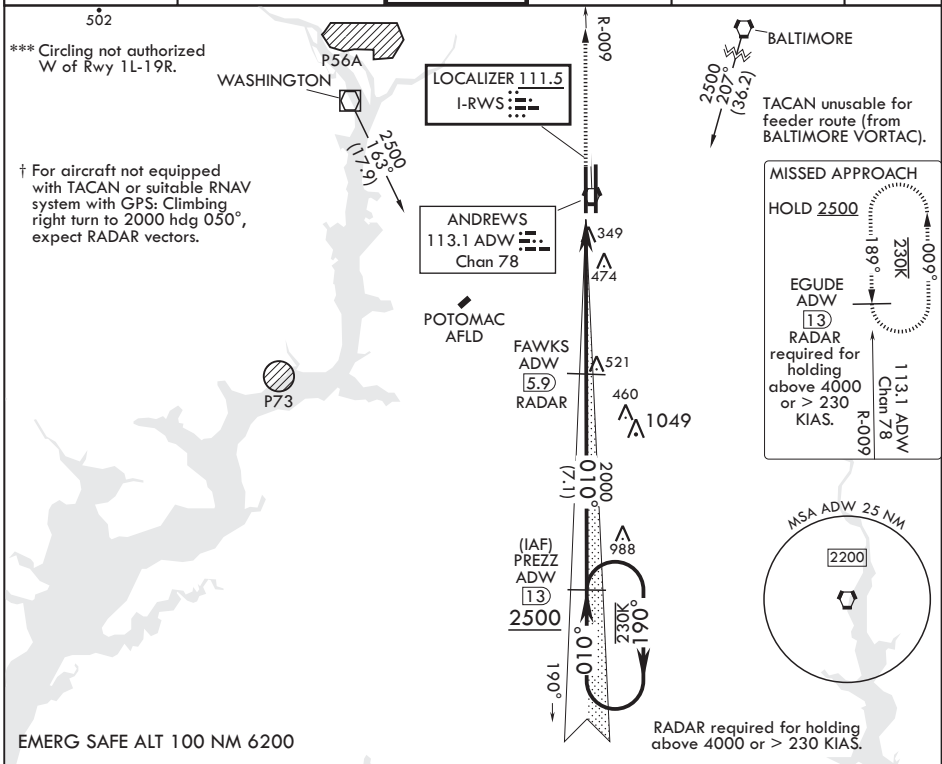
LOC I-RWS 111.5	APCH CRS 010°	Rwy Idg TDZE Arprt Elev	9318 261 280
---------------------------	-------------------------	-------------------------------	---

AL-561 (USAF)

JOINT BASE ANDREWS (KADW)

RADAR or DME required.		ALSF-2	† MISSED APPROACH: Climbing to 2500, intercept ADW VORTAC R-009 to EGUDE and hold.
* When ALS inop increase RVR to 40, vis to 3/4 mile. When TDZL/CL inop, increase RVR to 24. ** When ALS inop, increase CAT AB RVR to 55, vis to 1 mile, CAT CDE RVR to 60, vis to 1 1/8 miles.			

ATIS 133.675 251.05	POTOMAC APP CON 128.0 335.5	TOWER 118.4 349.0	GND CON 121.8 275.8	CLNC DEL 127.55 285.475	CPDLC
-------------------------------	---------------------------------------	-----------------------------	-------------------------------	-----------------------------------	-------



CATEGORY	A	B	C	D	E
S-ILS 1L*	461/18		200	(200-½)	
S-LOC 1L**	680/24	419 (400-½)	680/40	419	(400-¾)
☐ CIRCLING***	780-1	500 (500-1)	780-1½ 500 (500-1½)	840-2	560 (600-2)

ELEV 280		TDZE 261	
2500 ADW R-009 EGUDE ADW (13)		BCN 483 TWB 435 931.8 x 200 97.56 x 150 0.3% UP 1L 1R (A) (A1)	
HIRL all Rws TDZL/CL Rws 1L, 19R 010°			
FAF to MAP 5.1 NM			
Knots	60	90	120 150 180
Min:Sec	5:06	3:24	2:33 2:02 1:42

CAMP SPRINGS, MARYLAND

38°49'N - 76°52'W

JOINT BASE ANDREWS (KADW)

Amdt 7 06OCT22

ILS or LOC RWY 1L

NE-3, 22 FEB 2024 to 21 MAR 2024

NE-3, 22 FEB 2024 to 21 MAR 2024

CAMP SPRINGS, MARYLAND

ILS or LOC RWY 1R


LOC I-VJM 110.5	APCH CRS 010°	Rwy Idg 9756	TDZE 265	Arprt Elev 280
---------------------------	-------------------------	------------------------	--------------------	--------------------------

AL-561 (USAF)

JOINT BASE ANDREWS (KADW)

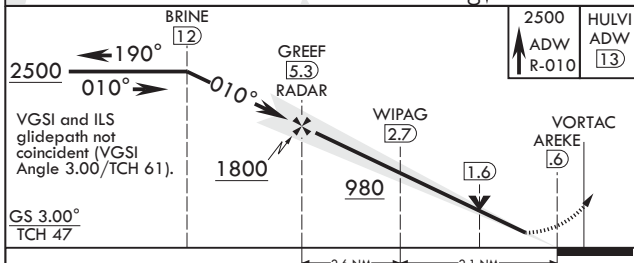
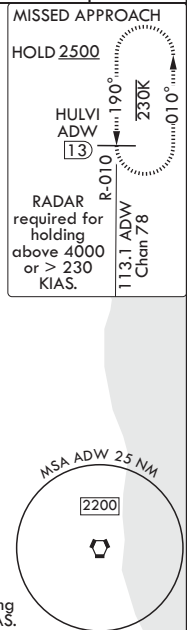
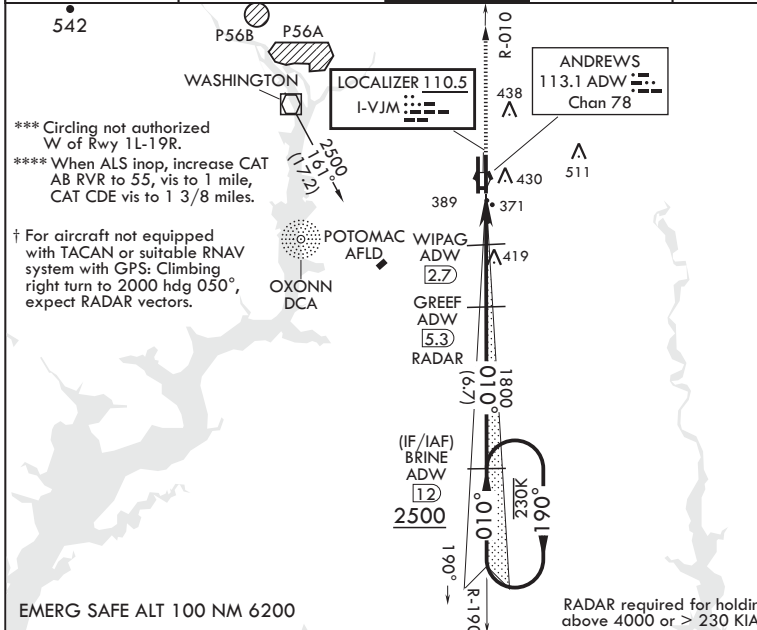
RADAR required
RADAR or DME required at FAF.

⚠ * When ALS inop, increase RVR to 40, vis to 3/4 mile. RVR 18 authorized with use of Flight Director System or Autopilot System or Heads-Up-Display to DA.
** When ALS inop, increase RVR to 35, vis to 1 mile.

ALSF-1 

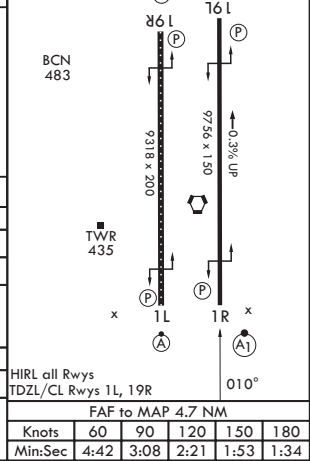
† MISSED APPROACH: Climb to 2500 via ADW VORTAC R-010 to HULVI/ADW 13 DME and hold.

ATIS 133.675 251.05	POTOMAC APP CON 128.0 335.5	TOWER 118.4 349.0	GND CON 121.8 275.8	CLNC DEL 127.55 285.475	CPDLC
-------------------------------	---------------------------------------	-----------------------------	-------------------------------	-----------------------------------	-------



2500 ADW R-010	HULVI ADW 13	ELEV 280	TDZE 265
----------------------	--------------------	----------	----------

CATEGORY	A	B	C	D	E
S-ILS 1R*	465/24 200 (200-½)				
S-LOC 1R**	640/24 375 (400-½)		640/35 375 (400-¾)		
C CIRCLING***	780-1 500 (500-1)		780-1½ 500 (500-1½)		840-2 560 (600-2)
NON-DME					
S-LOC 1R****	720/24 455 (500-½)		720/45 455 (500-¾)		
C CIRCLING***	780-1 500 (500-1)		780-1½ 500 (500-1½)		840-2 560 (600-2)



CAMP SPRINGS, MARYLAND
Amdt 1 18MAY23

38°49'N - 76°52'W

JOINT BASE ANDREWS (KADW)

ILS or LOC RWY 1R

HIRL all Rwys
TDZL/CL Rwys 1L, 19R

FAF to MAP 4.7 NM					
Knots	60	90	120	150	180
Min:Sec	4:42	3:08	2:21	1:53	1:34

NE-3, 22 FEB 2024 to 21 MAR 2024

NE-3, 22 FEB 2024 to 21 MAR 2024

CAMP SPRINGS, MARYLAND

RNAV (GPS) RWY 19L

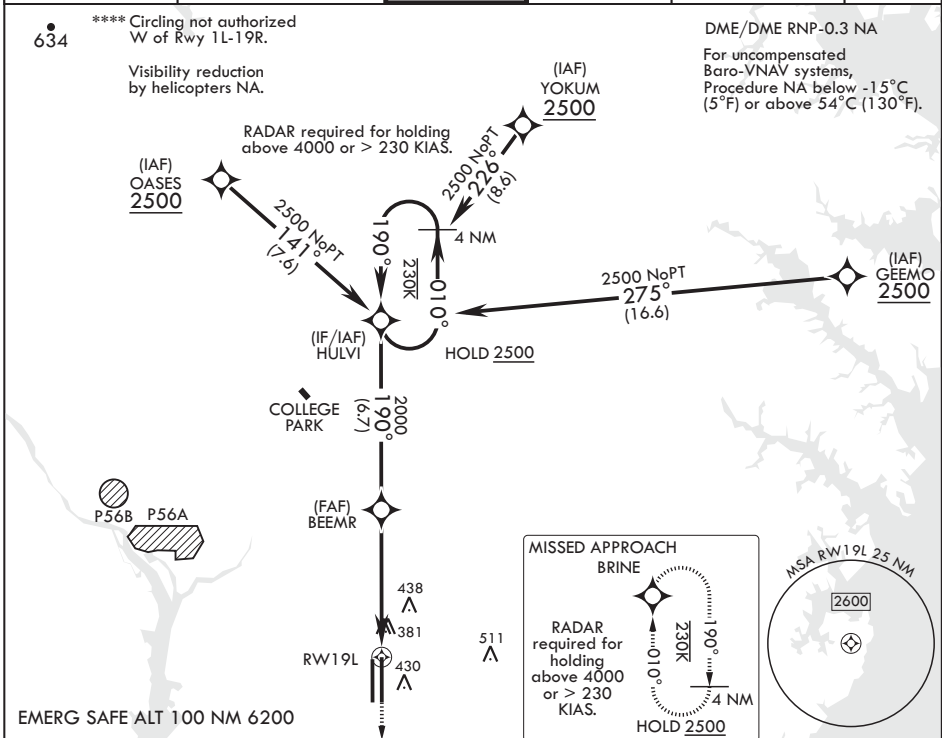
WAAS CH 52203 W19A	APCH CRS 190°	Rwy ldg TDZE 279	9756 279 280
--------------------------	------------------	------------------------	--------------------

AL-561 (USAF)

JOINT BASE ANDREWS (KADW)

<p>▼ * When ALS inop, increase RVR to 40, vis to 3/4 mile. ** When ALS inop, increase RVR to 60, vis to 1 1/8 miles. *** When ALS inop, increase CAT AB RVR to 55, vis to 1 mile; CAT CDE RVR to 60, vis to 1 1/8 miles.</p>	<p>ALSF-1</p>	<p>MISSED APPROACH: Climb to 2500 direct BRINE and hold.</p>
--	---------------	--

<p>ATIS 133.675 251.05</p>	<p>POTOMAC APP CON 128.0 335.5</p>	<p>TOWER 118.4 349.0</p>	<p>GND CON 121.8 275.8</p>	<p>CLNC DEL 127.55 285.475</p>	<p>CPDLC</p>
--------------------------------	--	------------------------------	--------------------------------	------------------------------------	--------------



NE-3, 22 FEB 2024 to 21 MAR 2024

NE-3, 22 FEB 2024 to 21 MAR 2024

<p>4 NM Holding Pattern 2500 010° 190° HULVI</p>	<p>2500 BRINE ELEV 280</p>	<p>TDZE 279</p>																														
<p>GP 3.00° TCH 56</p>	<p>BCN 483</p>	<p>TWR 435</p>																														
<p>1.1 NM to RWY 19L</p>	<p>9318 x 200</p>	<p>9756 x 150</p>																														
<p>5.2 NM</p>	<p>0.3% DOWN</p>	<p>1L 1R</p>																														
<table border="1"> <thead> <tr> <th>CATEGORY</th> <th>A</th> <th>B</th> <th>C</th> <th>D</th> <th>E</th> </tr> </thead> <tbody> <tr> <td>LPV DA*</td> <td></td> <td>479/24</td> <td>200</td> <td>(200-1/2)</td> <td></td> </tr> <tr> <td>LNAV/VNAV DA**</td> <td></td> <td>680/40</td> <td>401</td> <td>(400-3/4)</td> <td></td> </tr> <tr> <td>LNAV MDA***</td> <td>680/24</td> <td>401 (400-1/2)</td> <td>680/40</td> <td>401 (400-3/4)</td> <td></td> </tr> <tr> <td>☐ CIRCLING****</td> <td>780-1</td> <td>500 (500-1)</td> <td>780-1 1/2 500 (500-1 1/2)</td> <td>840-2</td> <td>560 (600-2)</td> </tr> </tbody> </table>	CATEGORY	A	B	C	D	E	LPV DA*		479/24	200	(200-1/2)		LNAV/VNAV DA**		680/40	401	(400-3/4)		LNAV MDA***	680/24	401 (400-1/2)	680/40	401 (400-3/4)		☐ CIRCLING****	780-1	500 (500-1)	780-1 1/2 500 (500-1 1/2)	840-2	560 (600-2)	<p>HIRL all Rwys TDZL/CL Rwys 1L, 19R</p>	
CATEGORY	A	B	C	D	E																											
LPV DA*		479/24	200	(200-1/2)																												
LNAV/VNAV DA**		680/40	401	(400-3/4)																												
LNAV MDA***	680/24	401 (400-1/2)	680/40	401 (400-3/4)																												
☐ CIRCLING****	780-1	500 (500-1)	780-1 1/2 500 (500-1 1/2)	840-2	560 (600-2)																											

CAMP SPRINGS, MARYLAND

38°49'N - 76°52'W

JOINT BASE ANDREWS (KADW)

Amdt 1 18MAY23

RNAV (GPS) RWY 19L

CAMP SPRINGS, MARYLAND

RNAV (GPS) RWY 19R

WAAS CH 52204 W19B	APCH CRS 190°	Rwy ldg TDZE Arprt Elev	9318 274 280
--------------------------	------------------	-------------------------------	--------------------

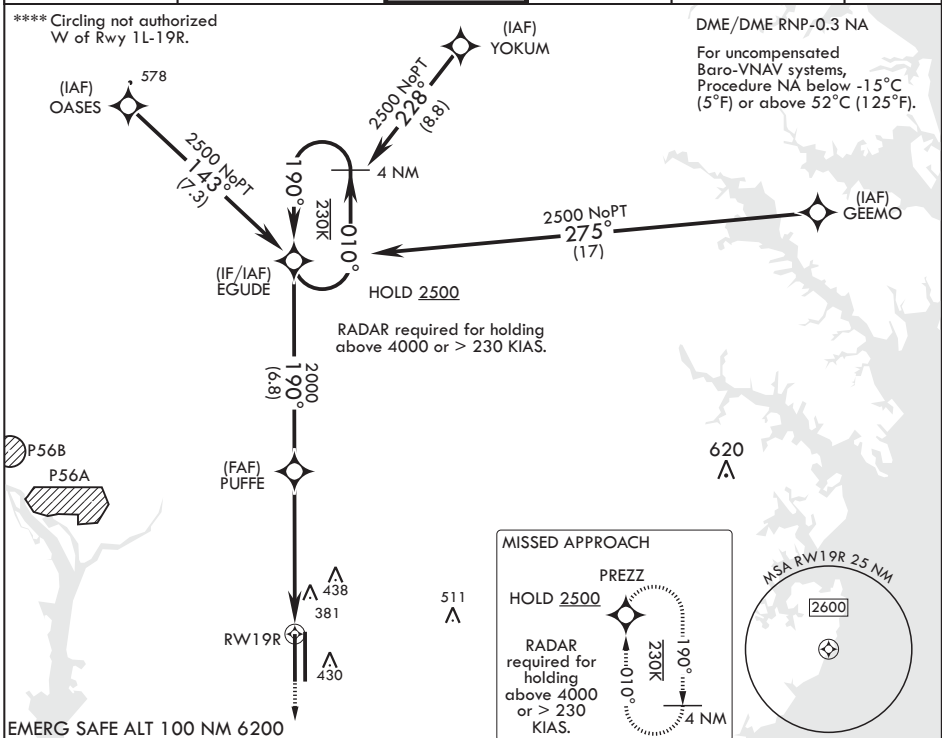
AL-561 (USAF)

JOINT BASE ANDREWS (KADW)

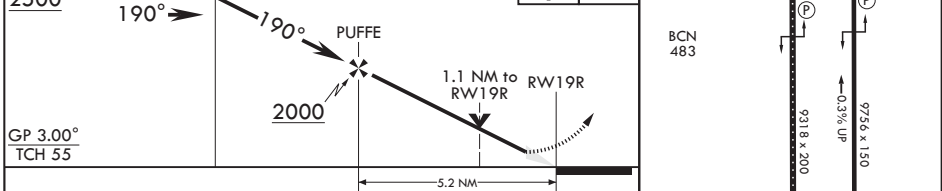
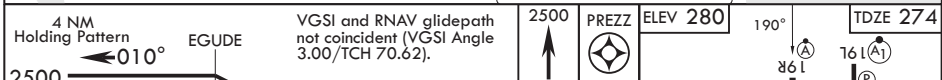
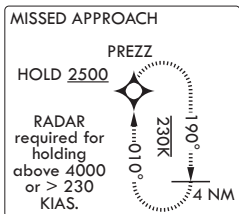
⚠ * When ALS inop, increase RVR to 40, vis to 3/4. When TDZ/CL lights inop, increase RVR to 24.
 ** When ALS inop, increase vis to 1 1/4 miles.
 *** When ALS inop, increase CAT AB RVR to 55, vis to 1 mile; CAT CDE vis to 1 1/4 miles.

ALSF-2 MISSED APPROACH: Climb to 2500 direct PREZZ and hold.

ATIS 133.675 251.05	POTOMAC APP CON 128.0 335.5	TOWER 118.4 349.0	GND CON 121.8 275.8	CLNC DEL 127.55 285.475	CPDLC
------------------------	--------------------------------	----------------------	------------------------	----------------------------	-------



EMERG SAFE ALT 100 NM 6200



CATEGORY	A	B	C	D	E
LPV DA*	474/18		200	(200-½)	
LNAV/VNAV DA**	697/40		423	(500-¾)	
LNAV MDA***	700/24	426 (500-½)	700/40	426	(500-¾)
C CIRCLING****	780-1	500 (500-1)	780-1½ 500 (500-1½)	840-2	560 (600-2)

HIRL all Rwys
 TDZL/CL Rwys 1L, 19R

CAMP SPRINGS, MARYLAND

38°49'N - 76°52'W

JOINT BASE ANDREWS (KADW)

Amdt 1 18MAY23

RNAV (GPS) RWY 19R

NE-3, 22 FEB 2024 to 21 MAR 2024

NE-3, 22 FEB 2024 to 21 MAR 2024

CAMP SPRINGS, MARYLAND

RNAV (GPS) RWY 1R

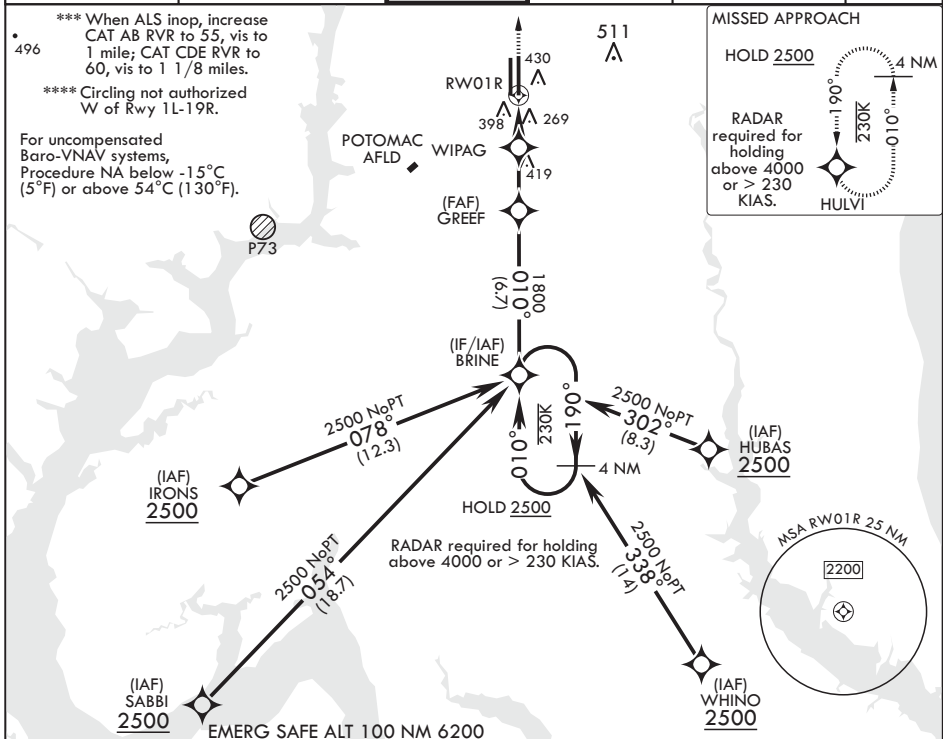
WAAS CH 52206 W01B	APCH CRS 010°	Rwy ldg TDZE 265 Arprt Elev 280
---------------------------------	-------------------------	---

AL-561 (USAF)

JOINT BASE ANDREWS (KADW)

DME/DME RNP-0.3 NA	ALS-1	MISSED APPROACH: Climb to 2500 direct HULVI and hold.
<p>V * When ALS inop increase RVR to 40, vis to 3/4 mile. ** When ALS inop, increase RVR to 60, vis to 1 1/8 miles.</p>		

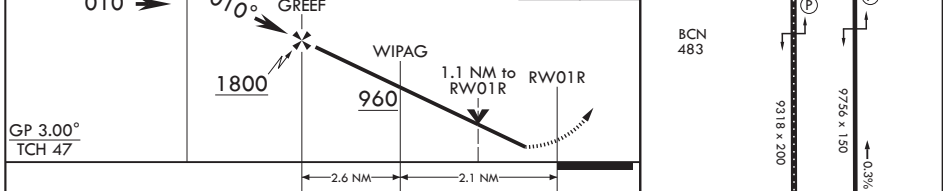
ATIS 133.675 251.05	POTOMAC APP CON 128.0 335.5	TOWER 118.4 349.0	GND CON 121.8 275.8	CLNC DEL 127.55 285.475	CPDLC
-------------------------------	---------------------------------------	-----------------------------	-------------------------------	-----------------------------------	-------



NE-3, 22 FEB 2024 to 21 MAR 2024

NE-3, 22 FEB 2024 to 21 MAR 2024

4 NM Holding Pattern BRINE 2500 ← 190° 010° →	VGSI and RNAV glidepath not coincident (VGSI Angle 3.00/TCH 61).	2500 HULVI ELEV 280	TDZE 265
---	--	---------------------	----------



CATEGORY	A	B	C	D	E
LPV DA*		465/24	200	(200-½)	
LNAV/VNAV DA**		660/35	395	(400-¾)	
LNAV MDA***	660/24	395 (400-½)	660/35	395 (400-¾)	
C CIRCLING****	780-1	500 (500-1)	780-1½ 500 (500-1½)	840-2	560 (600-2)

CAMP SPRINGS, MARYLAND

38°49'N - 76°52'W

JOINT BASE ANDREWS (KADW)

Amdt 3 18MAY23

RNAV (GPS) RWY 1R

CAMP SPRINGS, MARYLAND

RNAV (GPS)-A

APCH CRS 325°	Rwy Idg TDZE Arprt Elev N/A N/A 280
-------------------------	---

AL-561 (USAF)

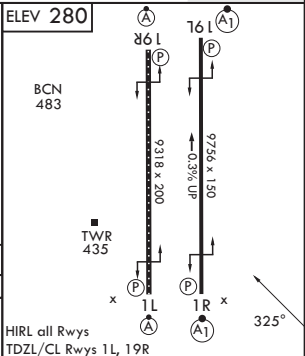
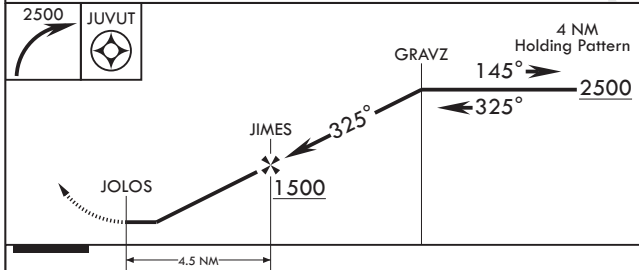
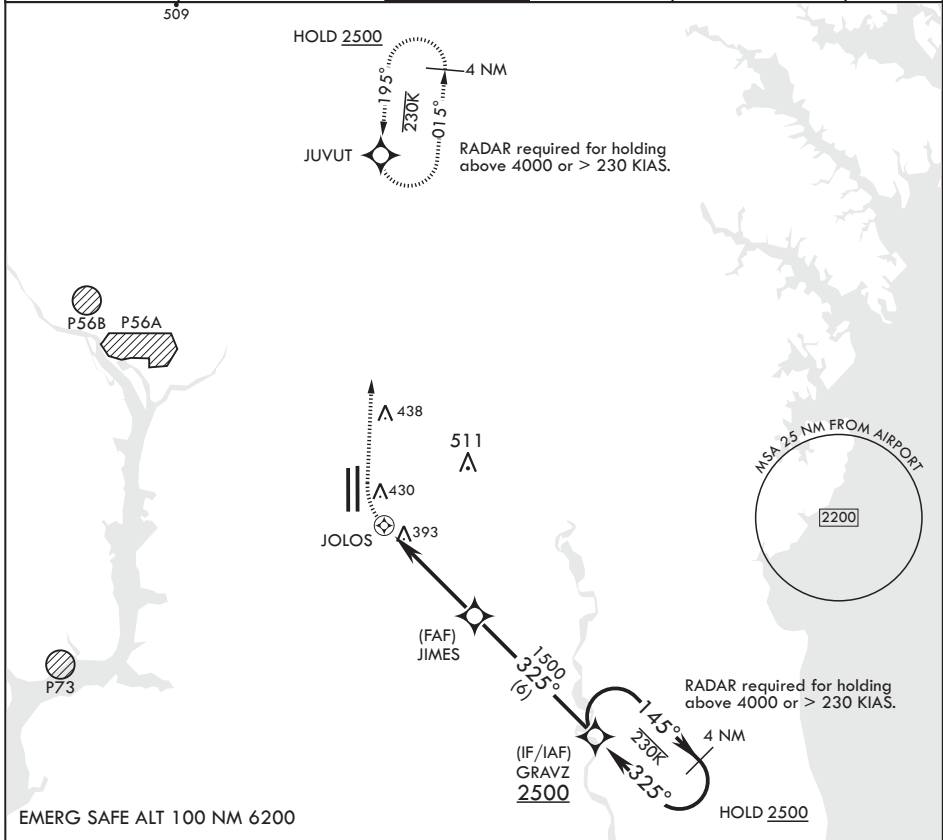
JOINT BASE ANDREWS (KADW)

DME/DME RNP - 0.3 NA

MISSED APPROACH: Climbing right turn to 2500 direct JUVUT and hold.

* Circling not authorized W of Rwy 1L-19R.

ATIS 133.675 251.05	POTOMAC APP CON 128.0 335.5	TOWER 118.4 349.0	GND CON 121.8 275.8	CLNC DEL 127.55 285.475	CPDLC
-------------------------------	---------------------------------------	-----------------------------	-------------------------------	-----------------------------------	-------



CATEGORY	A	B	C	D	E
C CIRCLING*	780-1¼ 501 (600-1¼)		780-1½ 501 (600-1½)	840-2 561 (600-2)	

CAMP SPRINGS, MARYLAND

38°49'N - 76°52'W

JOINT BASE ANDREWS (KADW)

Amdt 1 18MAY23

RNAV (GPS)-A

NE-3, 22 FEB 2024 to 21 MAR 2024

NE-3, 22 FEB 2024 to 21 MAR 2024

CAMP SPRINGS, MARYLAND

RNAV (RNP) Y RWY 01L

APCH CRS 010°	Rwy Idg 9318
	TDZE 261
	Arprt Elev 280

AL-561 (USAF)

JOINT BASE ANDREWS (KADW)

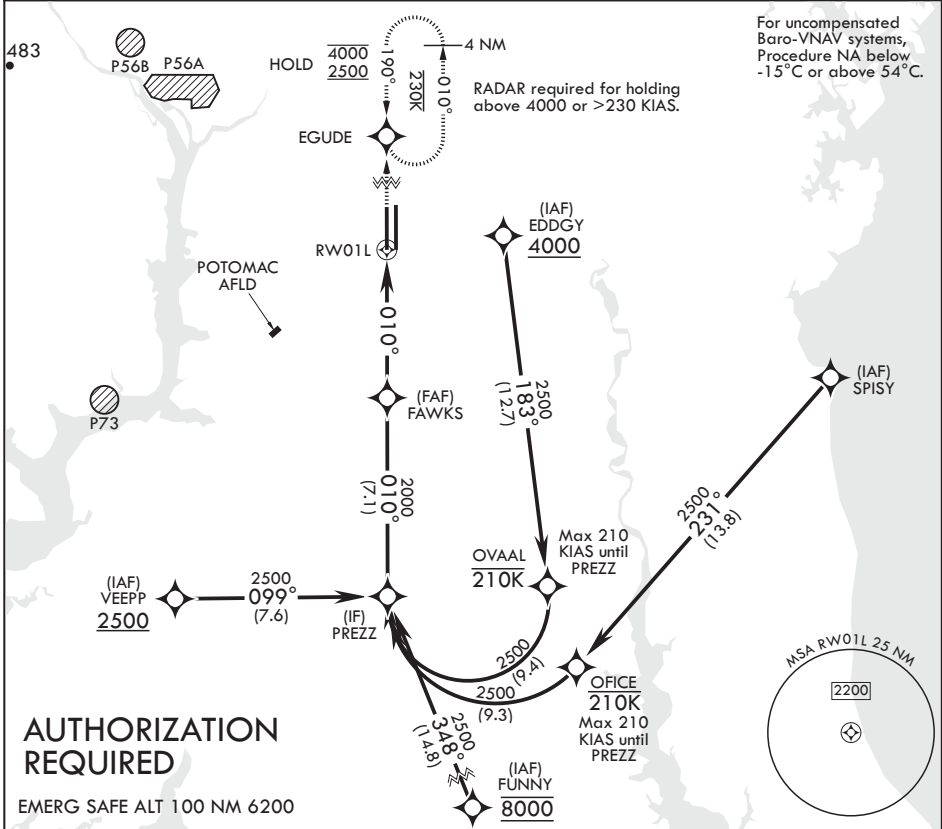
RNP AR APCH. From SPISY, EDDGY; RF.

ALSF-2

MISSED APPROACH: Climb to 2500 on track 010° to EGUDE and hold.

* When ALS inop, increase RVR to 55, vis to 1 mile.
** When ALS inop, increase vis to 1 3/8 miles.

ATIS 133.675 251.05	POTOMAC APP CON 128.0 335.5	TOWER 118.4 349.0	GND CON 121.8 275.8	CLNC DEL 127.55 285.475	CPDLC
-------------------------------	---------------------------------------	-----------------------------	-------------------------------	-----------------------------------	-------

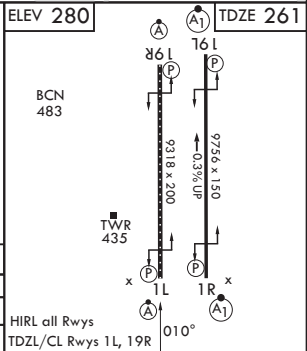
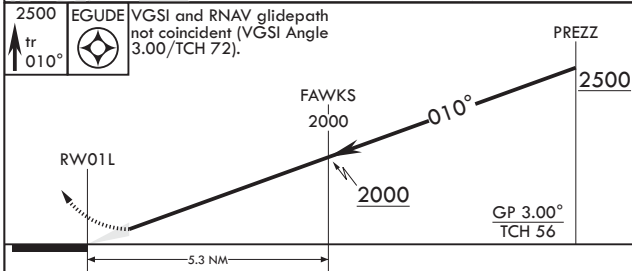


NE-3, 22 FEB 2024 to 21 MAR 2024

NE-3, 22 FEB 2024 to 21 MAR 2024

AUTHORIZATION REQUIRED

EMERG SAFE ALT 100 NM 6200



CATEGORY	A	B	C	D
RNP 0.15 DA*	641/35	380	(400-5%)	
RNP 0.30 DA**	717/45	456	(500-7%)	

CAMP SPRINGS, MARYLAND

38°49'N - 76°52'W

JOINT BASE ANDREWS (KADW)

Amdt 2 18MAY23
TERPS

RNAV (RNP) Y RWY 01L

CAMP SPRINGS, MARYLAND

RNAV (GPS) Z RWY 1L

WAAS CH 52205 W01A	APCH CRS 010°	Rwy ldg TDZE 261 Arprt Elev 280
--------------------------	------------------	--

AL-561 (USAF)

JOINT BASE ANDREWS (KADW)

DME/DME RNP-0.3 NA

▼ * When ALS inop, increase RVR to 40, vis to ¾. When TDZ/CL lights inop, increase RVR to 24.
 ** When ALS inop increase vis to 1 1/4 miles.

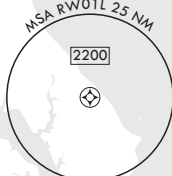
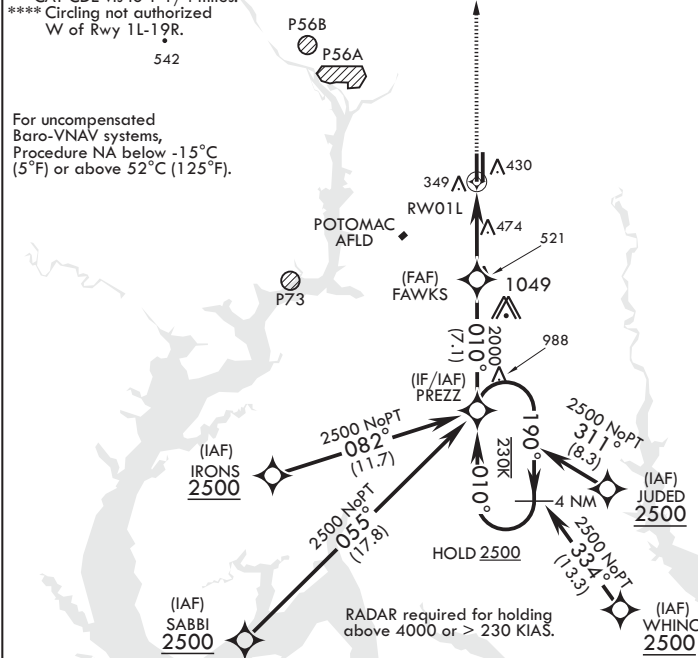
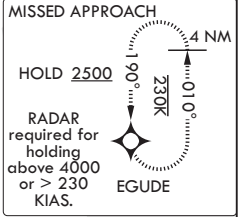


MISSED APPROACH: Climb to 2500 direct EGUDE and hold.

ATIS 133.675 251.05	POTOMAC APP CON 128.0 335.5	TOWER 118.4 349.0	GND CON 121.8 275.8	CLNC DEL 127.55 285.475	CPDLC
------------------------	--------------------------------	----------------------	------------------------	----------------------------	-------

*** When ALS inop increase CAT AB RVR to 55, vis to 1 mile; CAT CDE vis to 1 1/4 miles.
 **** Circling not authorized W of Rwy 1L-19R.

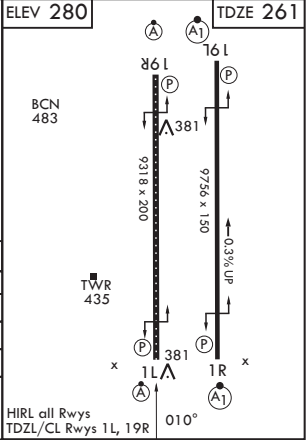
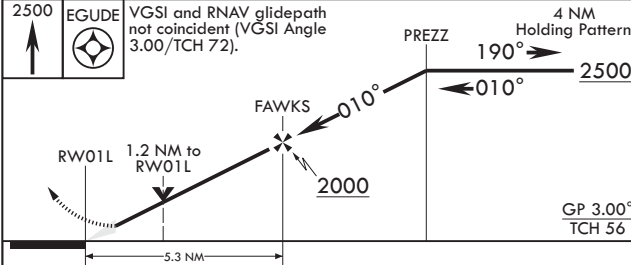
For uncompensated Baro-VNAV systems, Procedure NA below -15°C (5°F) or above 52°C (125°F).



NE-3, 22 FEB 2024 to 21 MAR 2024

NE-3, 22 FEB 2024 to 21 MAR 2024

EMERG SAFE ALT 100 NM 6200



CATEGORY	A	B	C	D	E
LPV DA*	461/18		200	(200-½)	
LNAV/VNAV DA**	687/40		426	(500-¾)	
LNAV MDA***	700/24	439 (500-½)	700/40	439	(500-¾)
☐ CIRCLING****	780-1	500 (500-1)	780-1½ 500 (500-1½)	840-2	560 (600-2)

CAMP SPRINGS, MARYLAND

38°49'N - 76°52'W

JOINT BASE ANDREWS (KADW)

Amdt 5 18MAY23

RNAV (GPS) Z RWY 1L

CAMP SPRINGS, MARYLAND

TACAN RWY 19L

VORTAC ADW 113.1 Chan 78	APCH CRS 195°	Rwy Idg TDZE Arprt Elev	9756 279 280
--------------------------------	------------------	-------------------------------	--------------------

AL-561 (USAF)

JOINT BASE ANDREWS (KADW)

ATC RADAR required

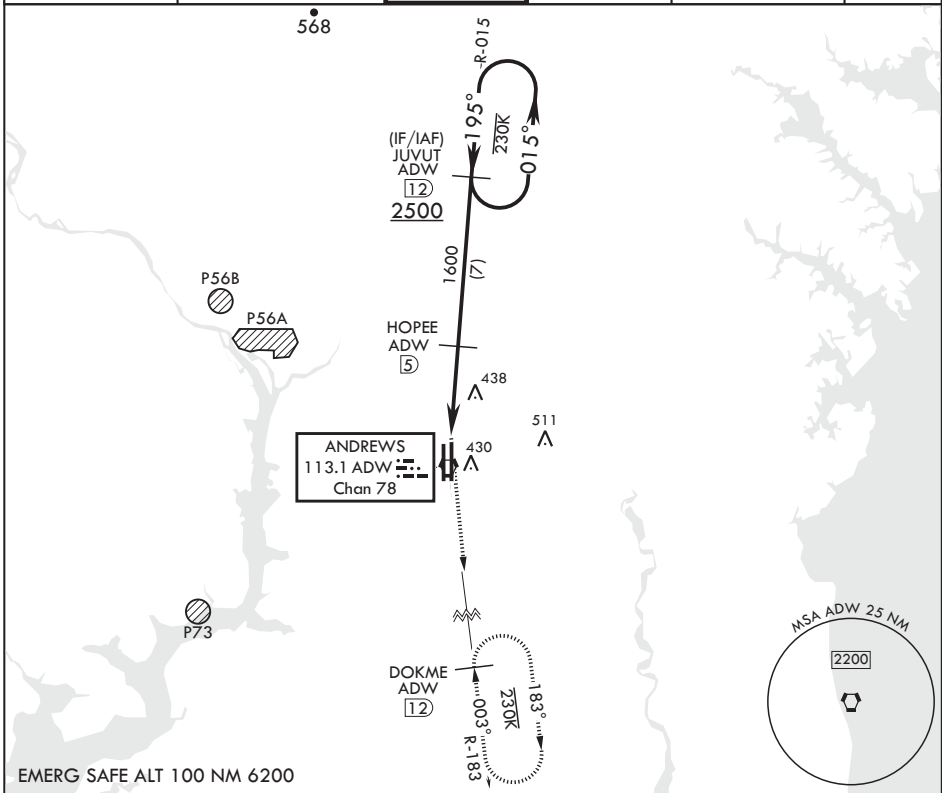
* When ALS inop, increase CAT AB RVR to 55, vis to 1 mile, CAT CDE vis to 1 3/8 miles.
** Circling not authorized W of Rwy 1L-19R.

ALSF-1

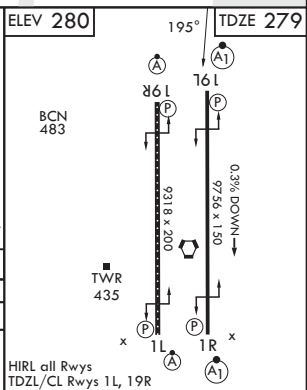
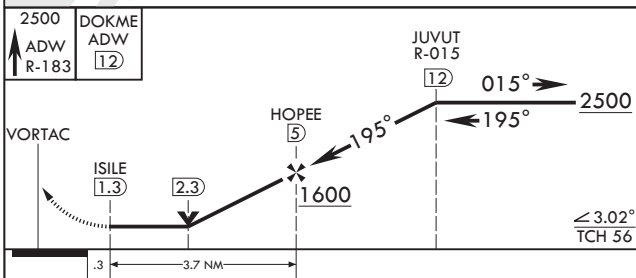


MISSED APPROACH: Climbing to 2500 via ADW VORTAC R-183 to DOKME and hold.

ATIS 133.675 251.05	POTOMAC APP CON 128.0 335.5	TOWER 118.4 349.0	GND CON 121.8 275.8	CLNC DEL 127.55 285.475	CPDLC
------------------------	--------------------------------	----------------------	------------------------	----------------------------	-------



EMERG SAFE ALT 100 NM 6200



CATEGORY	A	B	C	D	E
S-19L*	740/24 461 (500-1/2)	740/50 461 (500-1)	780-1 1/2 501 (600-1 1/2)	840-2 561 (600-2)	
CIRCLING**	780-1 501 (600-1)	780-1 1/2 501 (600-1 1/2)	840-2 561 (600-2)		

HIRL all Rwys
TDZL/CL Rwys 1L, 19R

CAMP SPRINGS, MARYLAND

38°49'N - 76°52'W

JOINT BASE ANDREWS (KADW)

Amdt 3 18MAY23

TACAN RWY 19L

NE-3, 22 FEB 2024 to 21 MAR 2024

NE-3, 22 FEB 2024 to 21 MAR 2024

CAMP SPRINGS, MARYLAND

TACAN RWY 19R

VORTAC ADW 113.1 Chan 78	APCH CRS 182°	Rwy Idg TDZE Arprt Elev	9318 274 280
--------------------------------	------------------	-------------------------------	--------------------

AL-561 (USAF)

JOINT BASE ANDREWS (KADW)

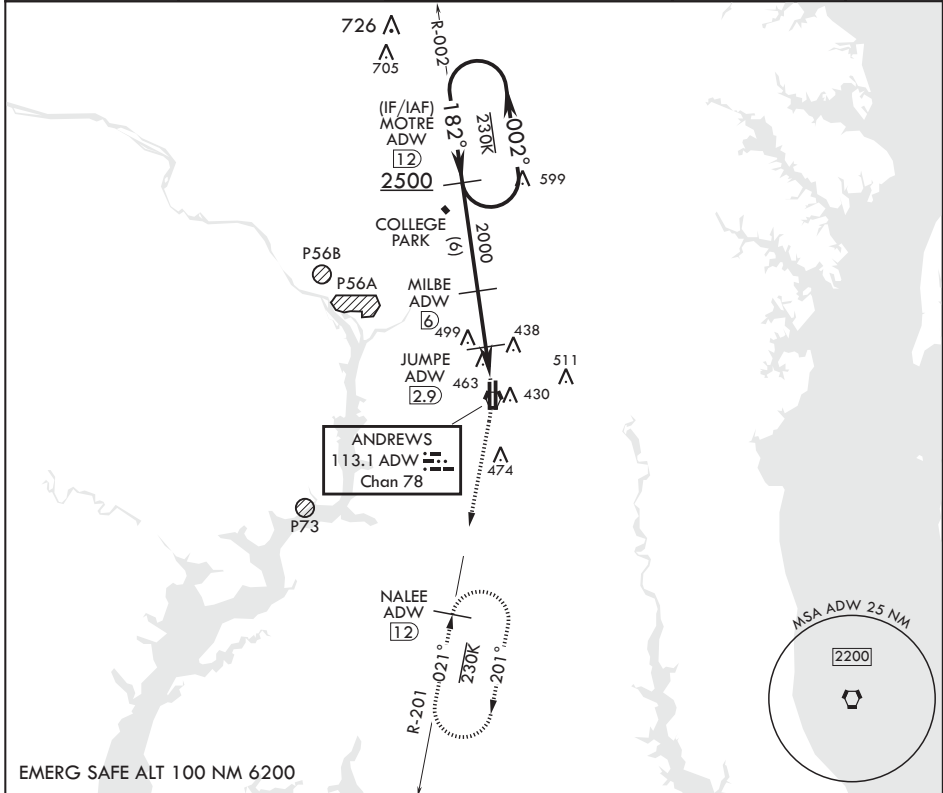
ATC RADAR required

⚠ * When ALS inop, increase CAT AB RVR to 55, vis to 1 mile, CAT CDE vis to 1 3/8 miles.
** Circling not authorized W of Rwy 1L-19R.

ALSF-2

MISSED APPROACH: Climbing to 2500, intercept ADW VORTAC R-201 to NALEE and hold.

ATIS 133.675 251.05	POTOMAC APP CON 128.0 335.5	TOWER 118.4 349.0	GND CON 121.8 275.8	CLNC DEL 127.55 285.475	CPDLC
------------------------	--------------------------------	----------------------	------------------------	----------------------------	-------



EMERG SAFE ALT 100 NM 6200

MOTRE R-002 2500 182°		MILBE (6) 2000		JUMPE (2.9) 960		BIMKE (1.2) 840		VORTAC 720		ELEV 280		NALEE ADW (12) TDZE 274	
† MILBE to MAP † 3.11° TCH 71										BCN 483		TWR 435	
		-3.1 NM		-1.7 NM		.2				182°		0.3% UP	
CATEGORY	A	B	C	D	E								
S-19R*	740/24	466 (500-½)	740/50	466	(500-1)								
CIRCLING**	780-1	501 (600-1)	780-1½ 501 (600-1½)	840-2	561 (600-2)								

CAMP SPRINGS, MARYLAND

38°49'N - 76°52'W

JOINT BASE ANDREWS (KADW)

Amdt 2 18MAY23

TACAN RWY 19R

NE-3, 22 FEB 2024 to 21 MAR 2024

NE-3, 22 FEB 2024 to 21 MAR 2024

CAMP SPRINGS, MARYLAND

TACAN RWY 1L

VORTAC ADW 113.1 Chan 78	APCH CRS 021°	Rwy Idg TDZE Arpt Elev	9318 261 280
--------------------------------	------------------	------------------------------	--------------------

AL-561 (USAF)

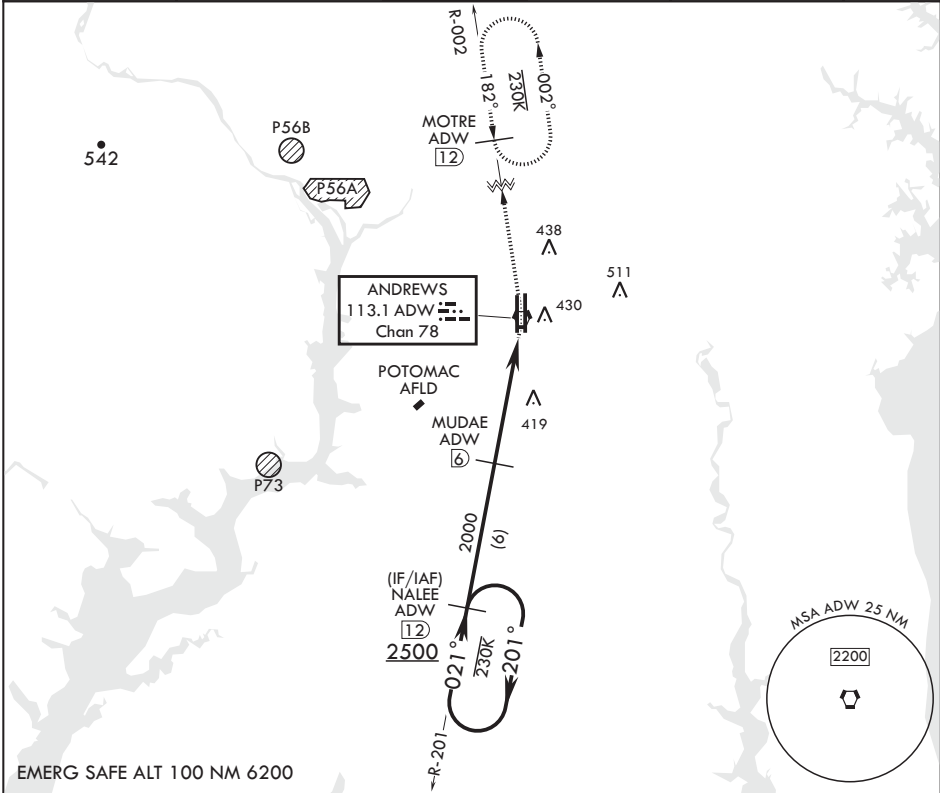
JOINT BASE ANDREWS (KADW)

ATC RADAR required

* When ALS inop, increase CAT AB RVR to 55, vis to 1 mile, CAT CDE vis to 1 3/8 miles.
** Circling not authorized W of Rwy 1L-19R.

ALSF-2 MISSED APPROACH: Climb to 2500 via ADW VORTAC R-002 to MOTRE/ADW 12 DME and hold.

ATIS 133.675 251.05	POTOMAC APP CON 128.0 335.5	TOWER 118.4 349.0	GND CON 121.8 275.8	CLNC DEL 127.55 285.475	CPDLC
------------------------	--------------------------------	----------------------	------------------------	----------------------------	-------



EMERG SAFE ALT 100 NM 6200

<p>2500 ← 201°</p> <p>← 021° →</p> <p>2500</p> <p>2.92° ≥ TCH 72</p>	<p>NALEE R-201 (12)</p>		<p>MUDAE (6)</p>		<p>VORTAC</p> <p>COSUR (8)</p>		<p>2500 MOTRE ADW (12)</p> <p>ADW R-002</p>		ELEV 280	<p>BCN 483</p> <p>TWR 435</p> <p>HIRL all Rwys TDZL/CL Rwys 1L, 19R</p>
	<p>2000</p> <p>5.2 NM</p> <p>0.2</p>		<p>2000</p>		<p>2000</p>		<p>2000</p>		<p>861 (P)</p> <p>9318 x 200</p> <p>761 (P)</p> <p>9756 x 130</p> <p>0.3% UP</p> <p>1L (P)</p> <p>1R (P)</p> <p>021°</p>	
CATEGORY	A	B	C	D	E					
S-1L*	720/24 459 (500-½)		720/45	459	(500-¾)					
CIRCLING**	780-1 501 (600-1)		780-1½ 501 (600-1½)	840-2	561 (600-2)					

CAMP SPRINGS, MARYLAND

38°49'N - 76°52'W

JOINT BASE ANDREWS (KADW)

Amdt 2 18MAY23

TACAN RWY 1L

NE-3, 22 FEB 2024 to 21 MAR 2024

NE-3, 22 FEB 2024 to 21 MAR 2024

CAMP SPRINGS, MARYLAND

TACAN RWY 1R

VORTAC ADW 113.1 Chan 78	APCH CRS 003°	Rwy Idg TDZE Arprt Elev	9756 265 280
--------------------------------	------------------	-------------------------------	--------------------

AL-561 (USAF)

JOINT BASE ANDREWS (KADW)

ATC RADAR required

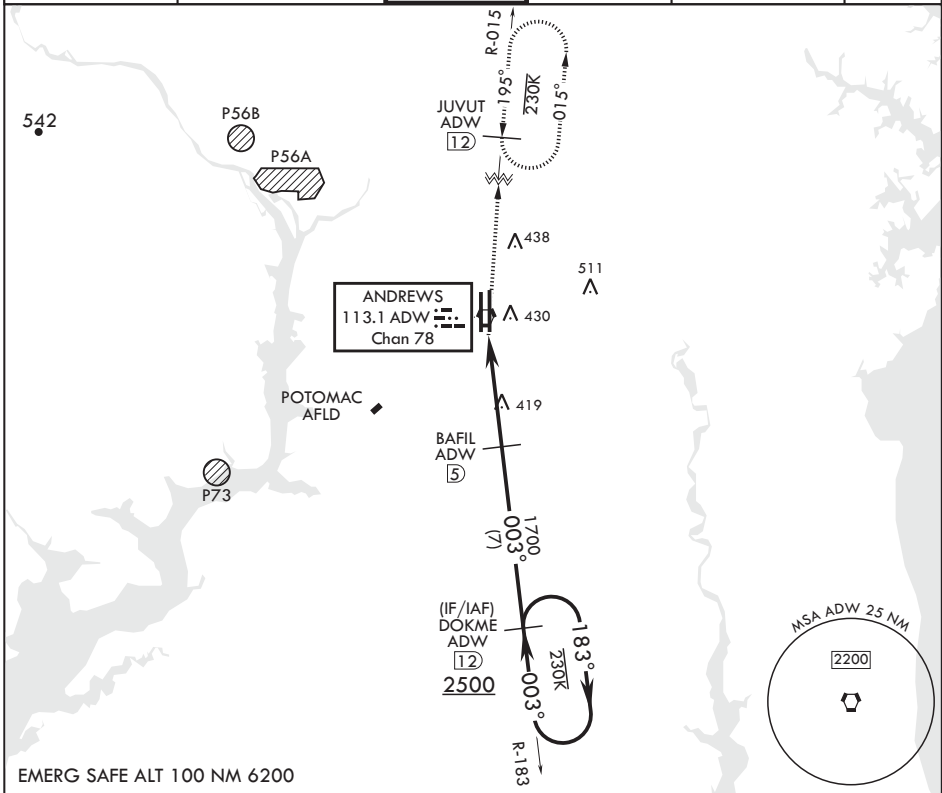
* When ALS inop, increase CAT AB RVR to 55, vis to 1 mile, CAT CDE vis to 1 3/8 miles.
** Circling not authorized W of Rwy 1L-19R.

ALSF-1



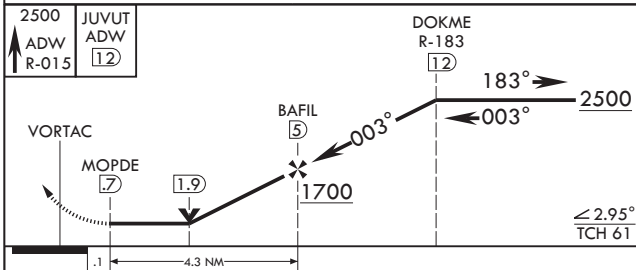
MISSED APPROACH: Climb to 2500 via ADW VORTAC R-015 to JUVUT and hold.

ATIS 133.675 251.05	POTOMAC APP CON 128.0 335.5	TOWER 118.4 349.0	GND CON 121.8 275.8	CLNC DEL 127.55 285.475	CPDLC
------------------------	--------------------------------	----------------------	------------------------	----------------------------	-------

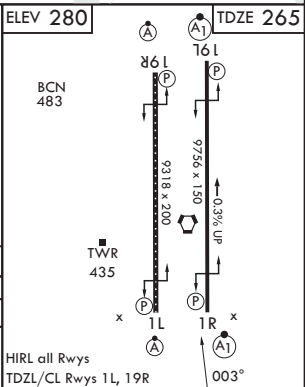


NE-3, 22 FEB 2024 to 21 MAR 2024

NE-3, 22 FEB 2024 to 21 MAR 2024



CATEGORY	A	B	C	D	E
S-1R*	720/24 455 (500-½)	720/45 455 (500-¾)	780-1½ 501 (600-1½)	840-2 561 (600-2)	
CIRCLING**	780-1 501 (600-1)	780-1½ 501 (600-1½)	840-2 561 (600-2)		



CAMP SPRINGS, MARYLAND

38°49'N - 76°52'W

JOINT BASE ANDREWS (KADW)

Amdt 3 18MAY23

TACAN RWY 1R

CAMP SPRINGS, MARYLAND

TACAN-B

VORTAC ADW 113.1 Chan 78	APCH CRS 325°	Rwy Idg TDZE Arprt Elev	N/A N/A 280
--------------------------------	------------------	-------------------------------	-------------------

AL-561 (USAF)

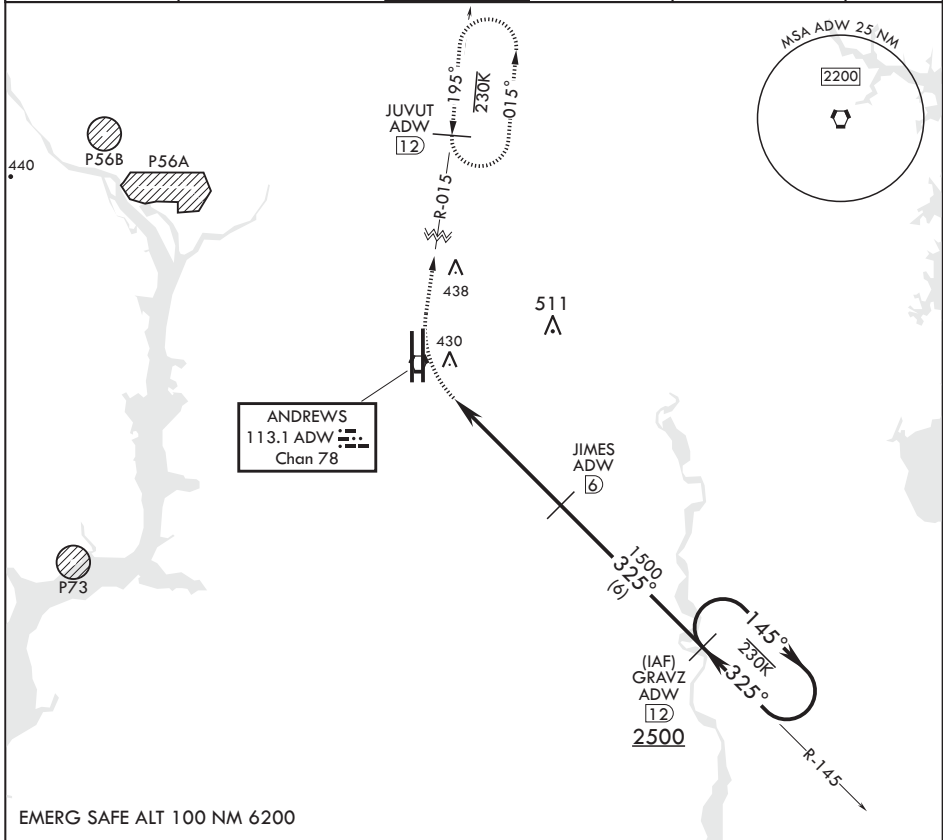
JOINT BASE ANDREWS (KADW)

ATC RADAR required

MISSED APPROACH: Climbing right turn to 2500 via ADW R-015 to JUVUT and hold.

* Circling not authorized west of Rwy 1L-19R.

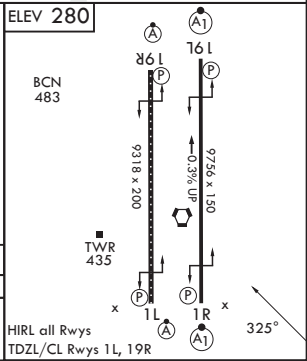
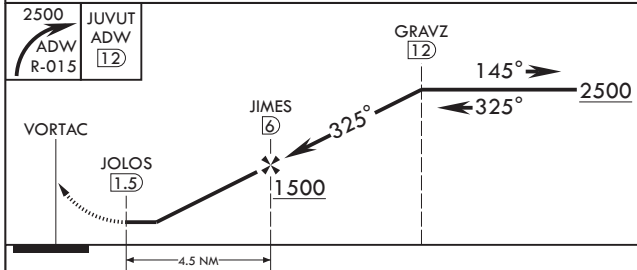
ATIS 133.675 251.05	POTOMAC APP CON 128.0 335.5	TOWER 118.4 349.0	GND CON 121.8 275.8	CLNC DEL 127.55 285.475	CPDLC
------------------------	--------------------------------	----------------------	------------------------	----------------------------	-------



NE-3, 22 FEB 2024 to 21 MAR 2024

NE-3, 22 FEB 2024 to 21 MAR 2024

EMERG SAFE ALT 100 NM 6200



CATEGORY	A	B	C	D	E
CIRCLING*	780-1¼ 500 (500-1¼)		780-1½ 500 (500-1½)	840-2 560 (600-2)	

HIRL all Rwys
TDZL/CL Rwys 1L, 19R

CAMP SPRINGS, MARYLAND

38°49'N - 76°52'W

JOINT BASE ANDREWS (KADW)

Amdt 4 18MAY23

TACAN-B