

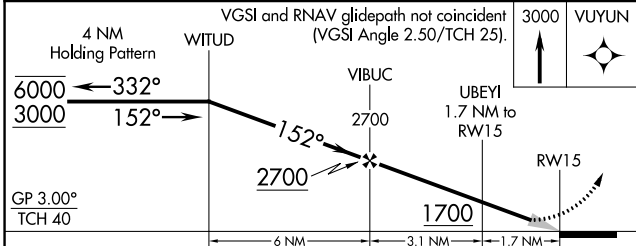
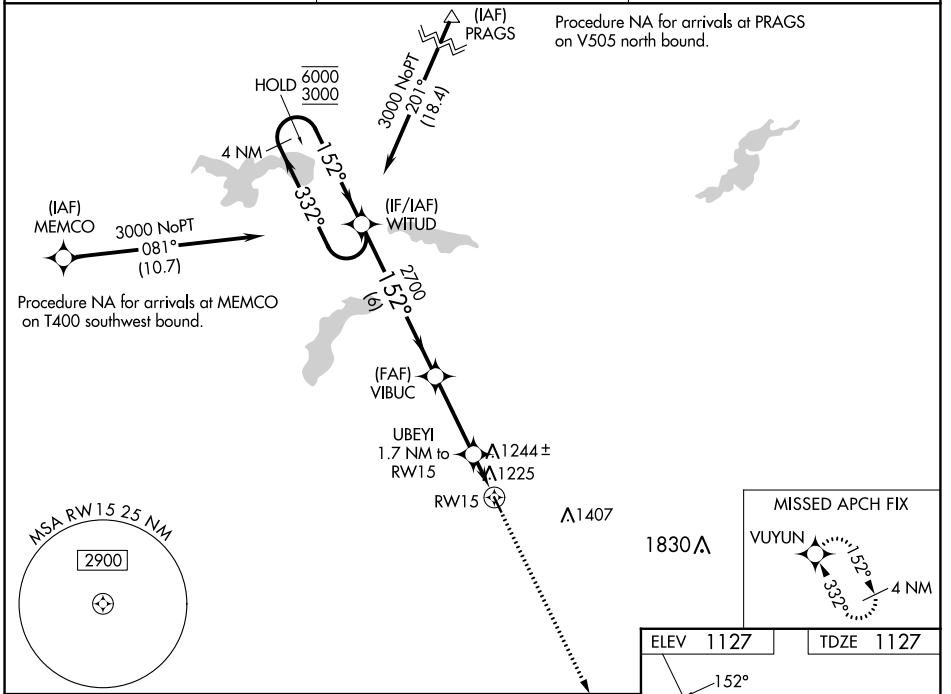
WAAS CH 70532 W15A	APP CRS 152°	Rwy Idg TDZE Apt Elev	3399 1127 1127
--	------------------------	-----------------------------	---

RNAV (GPS) RWY 15

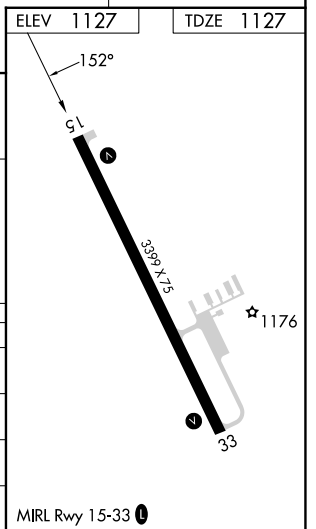
WASECA MUNI/MAYNARD RICHARD STENSRUD FLD (ACQ)

RNP APCH - GPS.	MISSED APPROACH: Climb to 3000 direct VUYUN and hold.
<p>▼ For uncompensated Baro-VNAV systems, LNAV/VNAV NA below -17°C or above 54°C. Helicopter visibility reduction below 1 SM NA. Procedure NA at night.</p>	

AWOS-3 118.425	MINNEAPOLIS CENTER 135.0 306.9	UNICOM 122.8 (CTAF) 0
--------------------------	--	---------------------------------



CATEGORY	A	B	C	D
LPV DA	1377-1 250 (300-1)			NA
LNAV/VNAV DA	1516-1½ 389 (400-1½)			NA
LNAV MDA	1540-1 413 (500-1)		1540-1½ 413 (500-1½)	NA
CIRCLING	1560-1 433 (500-1)	1620-1 493 (500-1)	1760-1¾ 633 (700-1¾)	NA



NC-1, 22 FEB 2024 to 21 MAR 2024

NC-1, 22 FEB 2024 to 21 MAR 2024

WAAS CH 86532 W33A	APP CRS 332°	Rwy Idg TDZE 1125 Apt Elev 1127	3399
--	------------------------	---	-------------

RNAV (GPS) RWY 33

WASECA MUNI/MAYNARD RICHARD STENSRUD FLD (ACQ)

⚠ When local altimeter setting not received, use Owatonna altimeter setting and increase all MDAs 40 feet, increase LP and LNAV Cat C visibility 1/8 mile and Circling Cat C visibility 1/8 mile. DME/DME RNP-0.3 NA. Procedure NA at night. Helicopter visibility reduction below 1 SM NA.

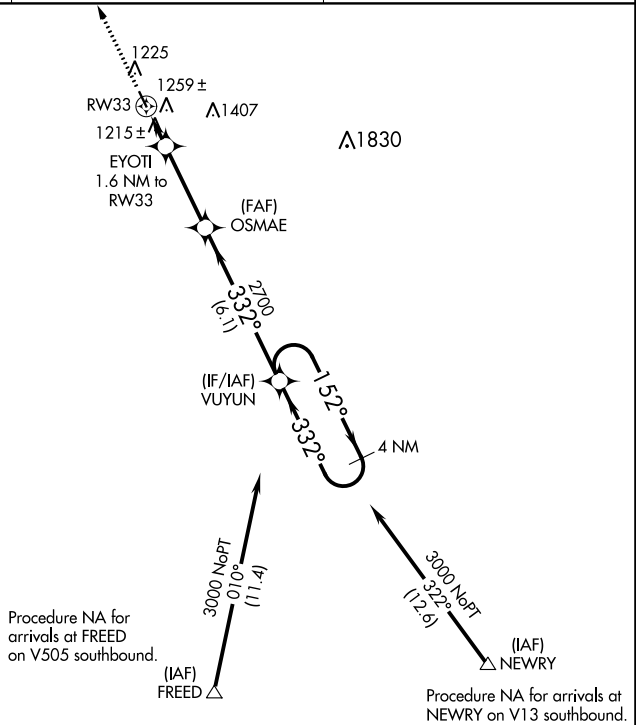
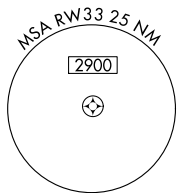
MISSED APPROACH: Climb to 3000 direct WITUD and hold.

AWOS-3
118.425

MINNEAPOLIS CENTER
135.0 306.9

UNICOM
122.8 (CTAF) ①

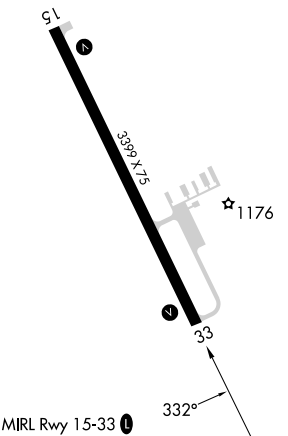
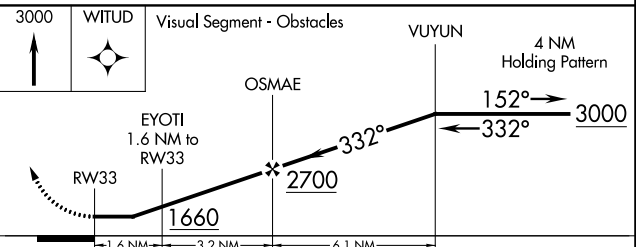
MISSED APCH FIX



Procedure NA for arrivals at FREED on V505 southbound.

Procedure NA for arrivals at NEWRY on V13 southbound.

ELEV 1127 TDZE 1125



CATEGORY	A	B	C	D
LP MDA	1480-1	355 (400-1)		NA
LNAV MDA	1520-1	395 (400-1)	1520-1 1/8 395 (400-1 1/8)	NA
C CIRCLING	1560-1 433 (500-1)	1620-1 493 (500-1)	1760-1 1/2 633 (700-1 1/2)	NA

RNAV (GPS) RWY 33

NC-1, 22 FEB 2024 to 21 MAR 2024

NC-1, 22 FEB 2024 to 21 MAR 2024