

APP CRS	Rwy Idg	<b>5000</b>
<b>177°</b>	TDZE	<b>105</b>
	Apt Elev	<b>107</b>

# RNAV (GPS) RWY 18

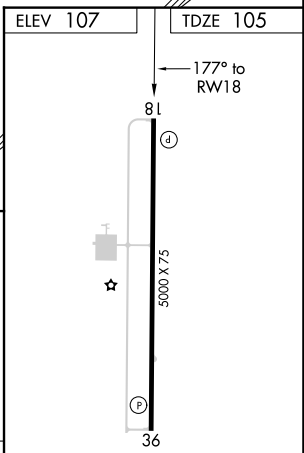
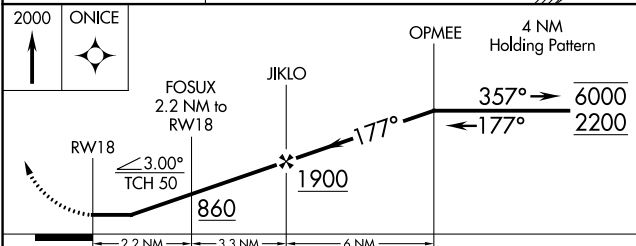
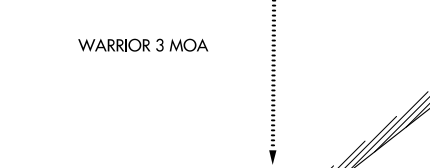
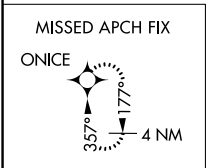
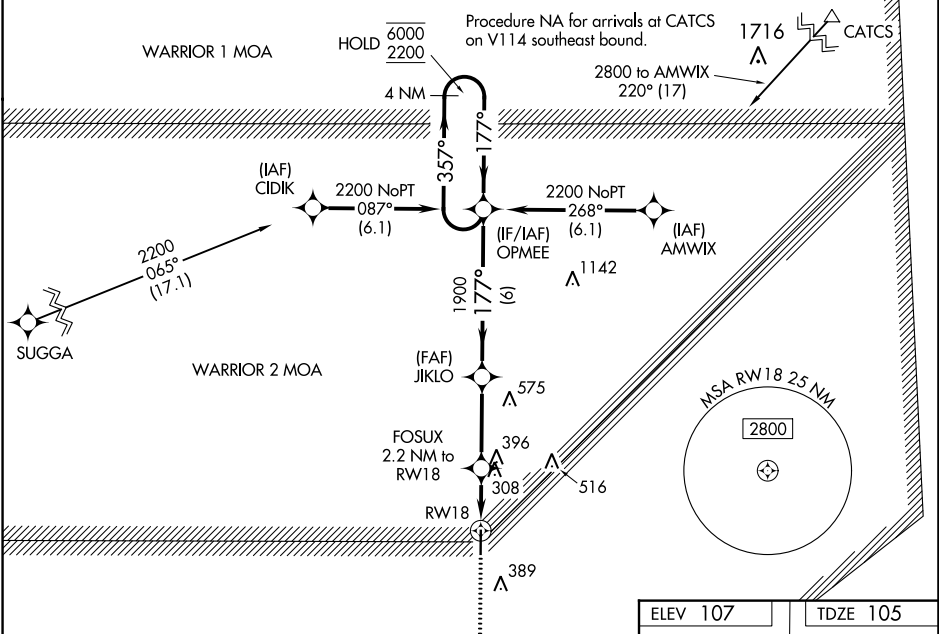
ALLEN PARISH (ACP)

RNP APCH - GPS.

**Procedure NA at night. Rwy 18 helicopter visibility reduction below 1 SM NA. When local altimeter setting not received, use Alexandria Intl altimeter setting; increase all MDAs 100 feet and visibility LNAV Cat C ¼ SM.**

**MISSED APPROACH:** Climb to 2000 direct ONICE and hold.

AWOS-3PT <b>118.275</b>	POLK APP CON <b>123.7 261.3</b>	GCO <b>135.075</b>	UNICOM <b>122.8 (CTAF) 0</b>
----------------------------	------------------------------------	-----------------------	---------------------------------



CATEGORY	A	B	C	D
LNAV MDA	560-1	455 (500-1)	560-1 3/8 455 (500-1 3/8)	NA

MIRL Rwy 18-36 0

REIL Rwy 18 and 36 0

SC-4, 22 FEB 2024 to 21 MAR 2024

SC-4, 22 FEB 2024 to 21 MAR 2024

APP CRS	Rwy Idg	<b>5000</b>
<b>357°</b>	TDZE	<b>107</b>
	Apt Elev	<b>107</b>

# RNAV (GPS) RWY 36

ALLEN PARISH (ACP)

RNP APCH - GPS.

**⚠** Procedure NA at night. Rwy 36 helicopter visibility reduction below 1 SM NA. When local altimeter setting not received, use Alexandria Intl altimeter setting: increase all MDAs 100 feet and visibility LNAV Cat C ¼ SM and Circling Cat C ½ SM.

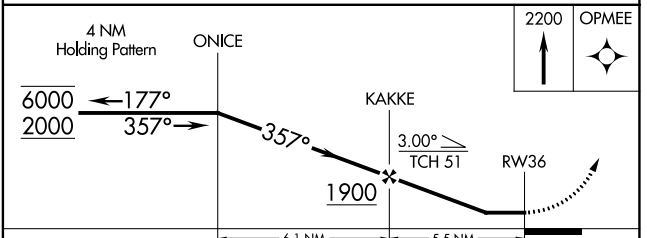
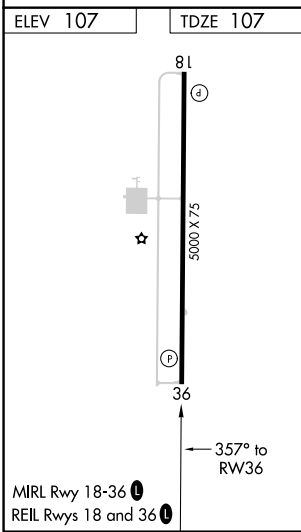
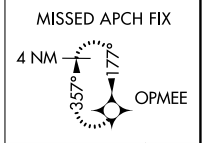
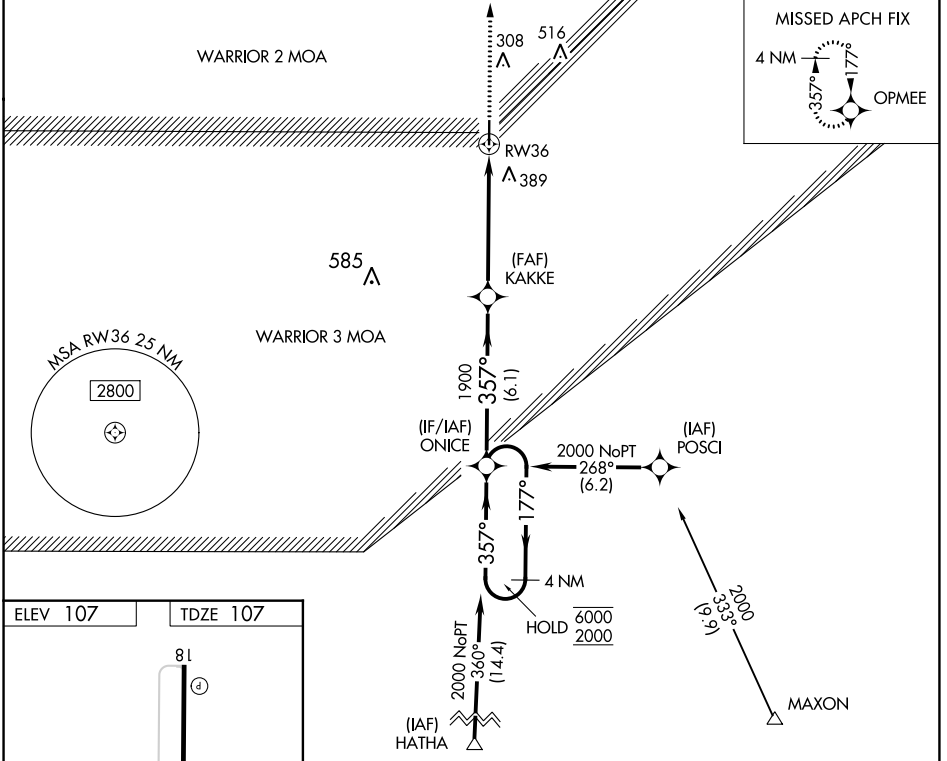
MISSED APPROACH: Climb to 2200 direct OPMEE and hold.

AWOS-3PT  
**118.275**

POLK APP CON  
**123.7 261.3**

GCO  
**135.075**

UNICOM  
**122.8 (CTAF)** **Ⓛ**



CATEGORY	A	B	C	D
LNAV MDA	540-1	433 (500-1)	540-1¼ 433 (500-1¼)	NA
CIRCLING	560-1 453 (500-1)	700-1 593 (600-1)	760-1¾ 653 (700-1¾)	NA

SC-4, 22 FEB 2024 to 21 MAR 2024

SC-4, 22 FEB 2024 to 21 MAR 2024