



# HI-TACAN RWY 8

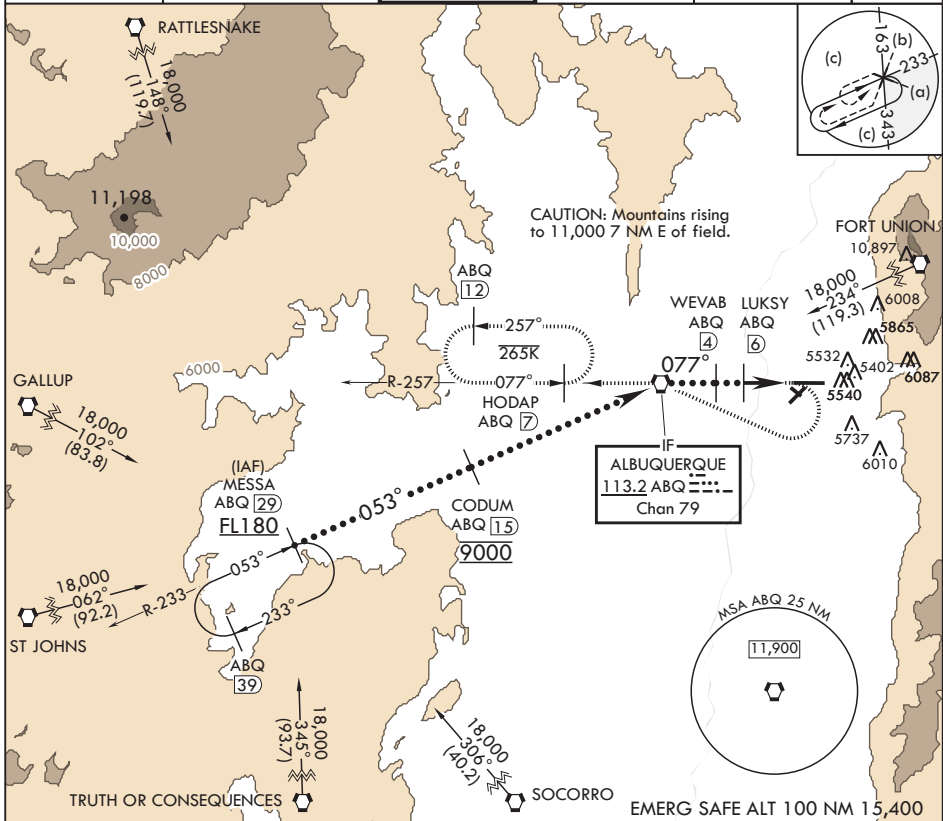
VORTAC ABQ 113.2 Chan 79	APCH CRS 077	Rwy ldg 12,793	TDZE 5320
		Arpt Elev 5355	

JAL-12 (USAF)

ALBUQUERQUE INTL SUNPORT (KABQ)

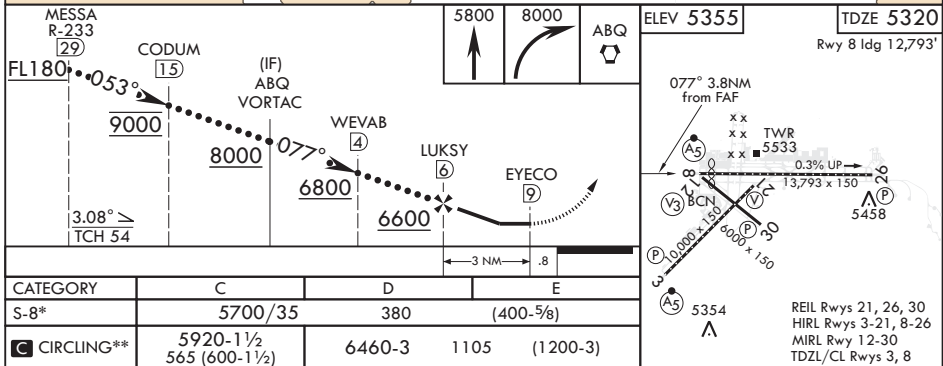
<p>⚠ * When ALS inop, increase CAT CDE RVR to 55, vis to 1 1/8 miles. ** Circling NA for CAT E SE of Rwy 3-21 and NE of Rwy 12-30. When local altimeter is not received, procedure NA.</p>	<p>MALS R</p> <p>MISSED APPROACH: Climb to 5800 then climbing right turn to 8000 direct ABQ VORTAC R-257 to HODAP/ABQ 7 DME and hold.</p>
--	---

D ATIS 118.0 257.7	APP CON/DEP CON 123.9 253.5	TOWER 120.3 351.9	GND CON 121.9 348.6	CLNC DEL 119.2 259.3	ASR
-----------------------	--------------------------------	----------------------	------------------------	-------------------------	-----



SW-1, 22 FEB 2024 to 21 MAR 2024

SW-1, 22 FEB 2024 to 21 MAR 2024



# HI-TACAN RWY 8

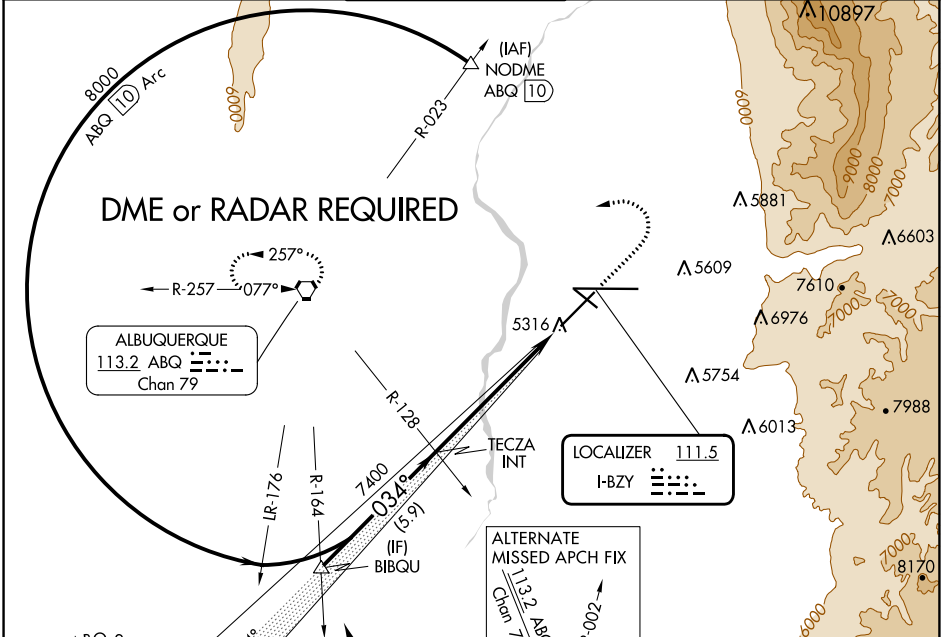
LOC I-BZY <b>111.5</b>	APP CRS <b>034°</b>	Rwy Idg <b>10000</b>	TDZE <b>5312</b>
		Apt Elev <b>5355</b>	

# ILS or LOC RWY 3

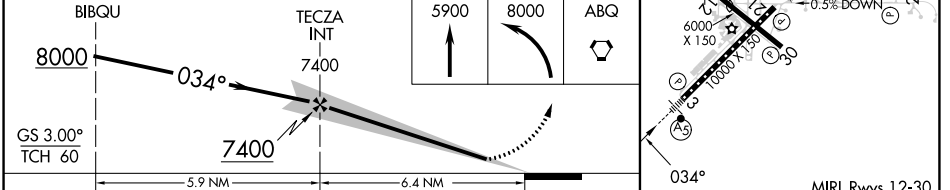
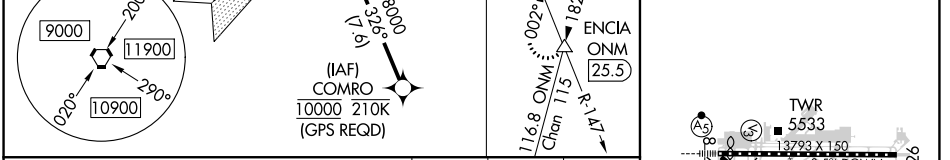
ALBUQUERQUE INTL SUNPORT (ABQ)

 ASR	 MALSR	MISSED APPROACH: Climb to 5900 then climbing left turn to 8000 direct ABQ VORTAC and hold.	

D-ATIS <b>118.0 257.7</b>	ALBUQUERQUE APP CON <b>123.9 354.1</b>	ALBUQUERQUE TOWER <b>120.3 351.9</b>	GND CON <b>121.9 348.6</b>	CLNC DEL <b>119.2 259.3</b>	CPDLC
------------------------------	---	---	-------------------------------	--------------------------------	-------



ELEV 5355	<b>D</b> TDZE 5312
-----------	--------------------



CATEGORY	A	B	C	D
S-ILS 3		5512/18	200 (200-½)	
S-LOC 3		5600/24	288 (300-½)	
<b>CIRCLING</b>	5840-1 485 (500-1)	5920-1 565 (600-1)	5940-1½ 585 (600-½)	6460-3 1105 (1200-3)

**TWR 5333**  
13793 X 150  
-0.5% DOWN

MIRL Rwy 12-30  
TDZ/CL Rwy 3 and 8  
HIRL Rwy 3-21 and 8-26  
REIL Rwy 21, 26, and 30

FAF to MAP 6.4 NM

Knots	60	90	120	150	180
Min:Sec	6:24	4:16	3:12	2:34	2:08

SW-1, 22 FEB 2024 to 21 MAR 2024

SW-1, 22 FEB 2024 to 21 MAR 2024

LOC/DME I-SPT <b>111.9</b> Chan <b>56</b>	APP CRS <b>079°</b>	Rwy Idg <b>12793</b> TDZE <b>5320</b> Apt Elev <b>5355</b>
---	------------------------	--

# ILS or LOC RWY 8

## ALBUQUERQUE INTL SUNPORT (ABQ)

DME required. RNAV 1 - GPS or RADAR required for procedure entry.

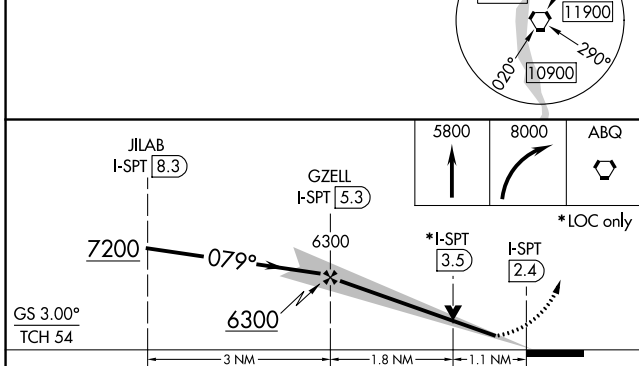
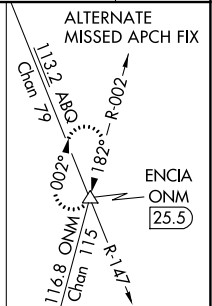
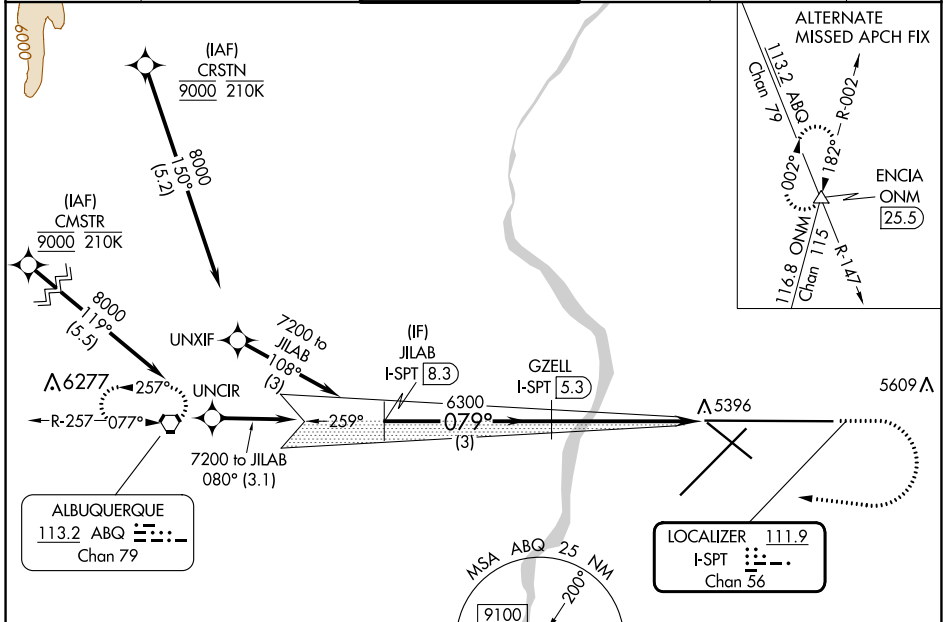
For inop ALS, increase S-LOC 8 Cat C and D visibility to RVR 6000.

ASR

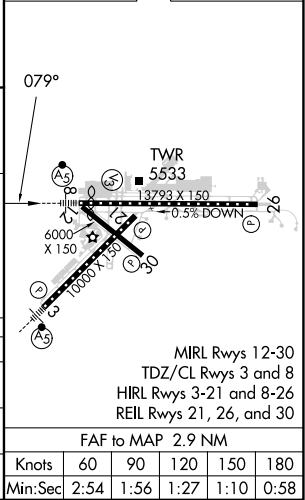
MALSR

MISSED APPROACH: Climb to 8000 then climbing right turn to 8000 direct ABQ VORTAC and hold.

D-ATIS <b>118.0 257.7</b>	ALBUQUERQUE APP CON <b>123.9 354.1</b>	ALBUQUERQUE TOWER <b>120.3 351.9</b>	GND CON <b>121.9 348.6</b>	CLNC DEL <b>119.2 259.3</b>	CPDLC
------------------------------	---	---	-------------------------------	--------------------------------	-------



ELEV 5355	TDZE 5320
-----------	-----------



CATEGORY	A	B	C	D
S-ILS 8	5527/18		207 (200-½)	
S-LOC 8	5720/24	400 (400-½)	5720/40	400 (400-¾)
CIRCLING	5840-1 485 (500-1)	5920-1 565 (600-1)	5940-1½ 585 (600-1½)	NA

FAF to MAP 2.9 NM					
Knots	60	90	120	150	180
Min:Sec	2:54	1:56	1:27	1:10	0:58

SW-1, 22 FEB 2024 to 21 MAR 2024

SW-1, 22 FEB 2024 to 21 MAR 2024

APP CRS <b>214°</b>	Rwy Idg <b>10000</b>
	TDZE <b>5316</b>
	Apt Elev <b>5355</b>

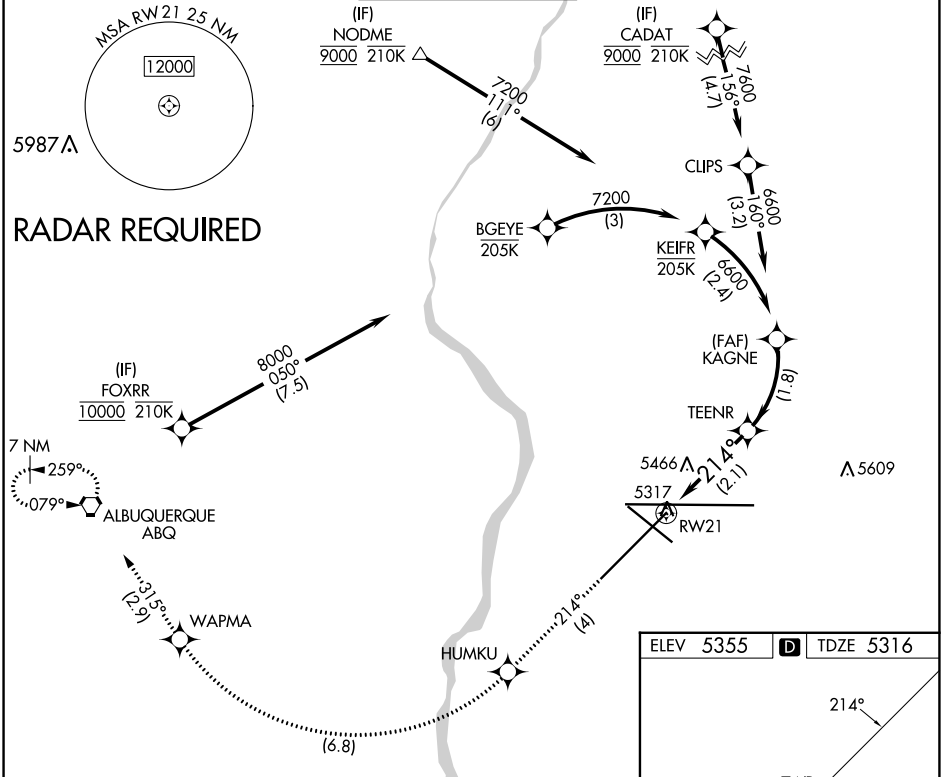
# RNAV (RNP) Y RWY 21

ALBUQUERQUE INTL SUNPORT (ABQ)

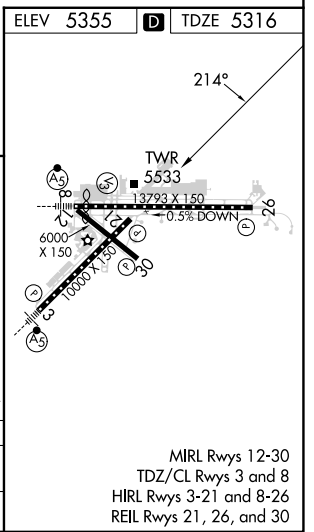
**ASR** For uncompensated Baro-VNAV systems, procedure NA below -12°C (11°F) or above 47°C (116°F). RF Required. GPS Required.

**MISSED APPROACH:** Climb to 8000 on track 214° to HUMKU, right turn to WAPMA, then on track 315° to ABQ VORTAC and hold.

D-ATIS <b>118.0 257.7</b>	ALBUQUERQUE APP CON <b>123.9 354.1</b>	ALBUQUERQUE TOWER <b>120.3 351.9</b>	GND CON <b>121.9 348.6</b>	CLNC DEL <b>119.2 259.3</b>	CPDLC
------------------------------	---	---	-------------------------------	--------------------------------	-------



8000 fr 214°	HUMKU	WAPMA	fr 315°	ABQ	KAGNE
See planview for multiple IF locations.					
RW21		TEENR		KAGNE	
2.1 NM		6030		6600	
VGSi and RNAV glidepath not coincident (VGSi Angle 3.00/TCH 74).				GP 3.00° TCH 55	
1.8 NM					



CATEGORY	A	B	C	D
RNP 0.30 DA		5758-1½	442 (500-1½)	

**AUTHORIZATION REQUIRED**

SW-1, 22 FEB 2024 to 21 MAR 2024

SW-1, 22 FEB 2024 to 21 MAR 2024

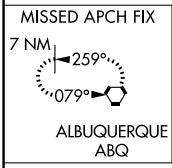
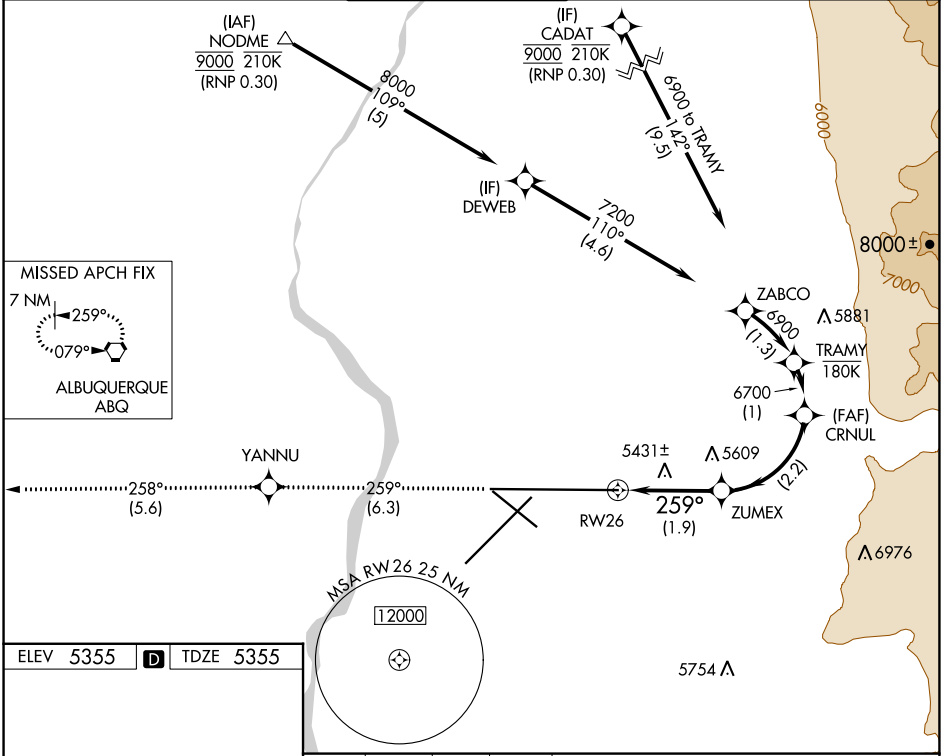
APP CRS **259°**  
 Rwy Idg **13793**  
 TDZE **5355**  
 Apt Elev **5355**

# RNAV (RNP) Y RWY 26

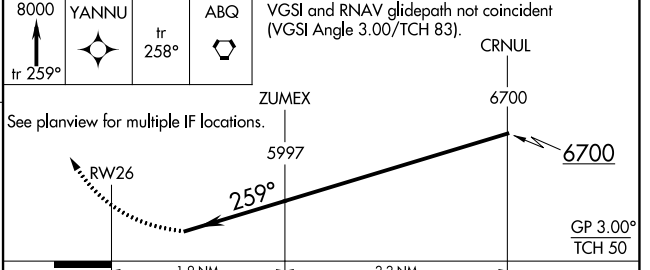
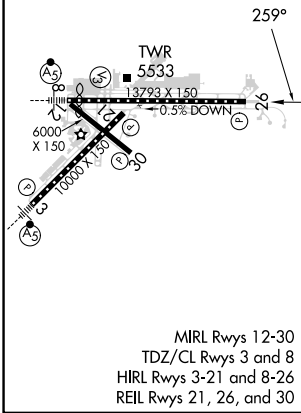
ALBUQUERQUE INTL SUNPORT (ABQ)

RNP AR APCH, RF required.  
 For uncompensated Baro-VNAV systems, procedure NA  
 ASR below -12°C or above 48°C.  
 MISSED APPROACH: Climb to 8000 on track 259° to YANNU and on track 258° to ABQ VORTAC and hold.

D-ATIS <b>118.0 257.7</b>	ALBUQUERQUE APP CON <b>123.9 354.1</b>	ALBUQUERQUE TOWER <b>120.3 351.9</b>	GND CON <b>121.9 348.6</b>	CLNC DEL <b>119.2 259.3</b>	CPDLC
------------------------------	---	---	-------------------------------	--------------------------------	-------



ELEV 5355	<b>D</b>	TDZE 5355
-----------	----------	-----------



CATEGORY	A	B	C	D
RNP 0.15 DA	5728-1¼ 373 (400-1¼)			

**AUTHORIZATION REQUIRED**

SW-1, 22 FEB 2024 to 21 MAR 2024

SW-1, 22 FEB 2024 to 21 MAR 2024

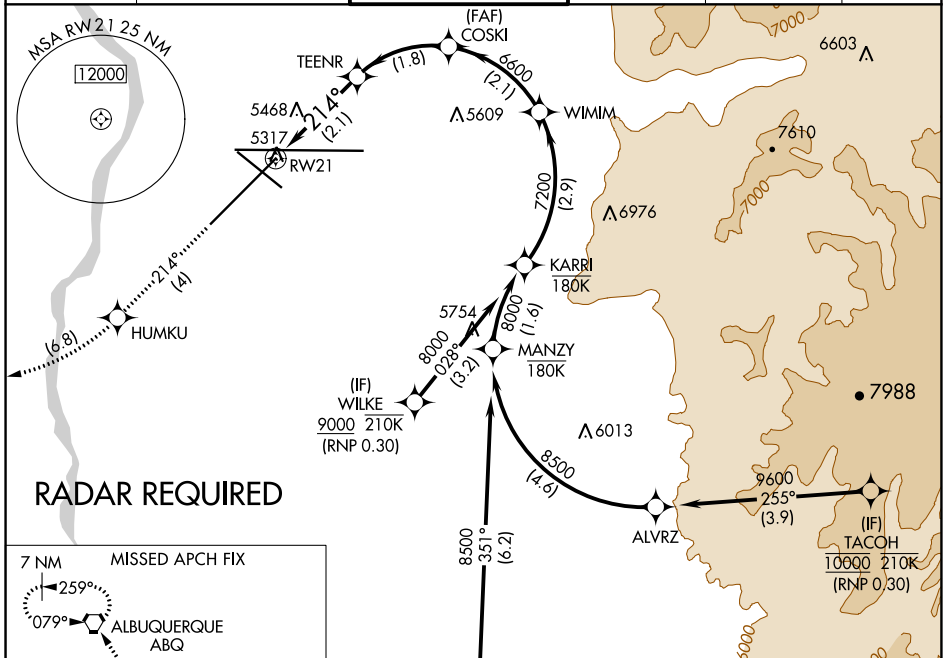
APP CRS	Rwy Idg	<b>10000</b>
<b>214°</b>	TDZE	<b>5316</b>
	Apt Elev	<b>5355</b>

# RNAV (RNP) Z RWY 21

ALBUQUERQUE INTL SUNPORT (ABQ)

ASR	For uncompensated Baro-VNAV systems, procedure NA below -12°C (11°F) or above 47°C (116°F). RF required. GPS required.	MISSED APPROACH: Climb to 8000 on track 214° to HUMKU, right turn to WAPMA, then on track 315° to ABQ VORTAC and hold.

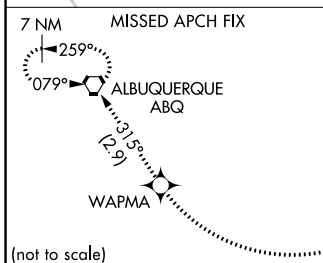
D-ATIS	ALBUQUERQUE APP CON	ALBUQUERQUE TOWER	GND CON	CLNC DEL	CPDLC
<b>118.0 257.7</b>	<b>123.9 354.1</b>	<b>120.3 351.9</b>	<b>121.9 348.6</b>	<b>119.2 259.3</b>	



SW-1, 22 FEB 2024 to 21 MAR 2024

SW-1, 22 FEB 2024 to 21 MAR 2024

## RADAR REQUIRED



8000	HUMKU	WAPMA	ABQ	See planview for multiple IF locations.
tr 214°			tr 315°	
VGSI and RNAV glidepath not coincident (VGSI Angle 3.00/TCH 74).				
RWY 21	TEENR	COSKI	WIMM	KARRI
	6030	6600	7200	8000
	2.1 NM	1.8 NM	2.1 NM	2.9 NM
				GP 3.00° TCH 55

ELEV 5355	<b>D</b> TDZE 5316
-----------	--------------------

MRL Rwy 12-30  
TDZ/CL Rwy 3 and 8  
HIRL Rwy 3-21 and 8-26  
REIL Rwy 21, 26, and 30

CATEGORY	A	B	C	D
RNP 0.30 DA		5755-1½	439 (400-1½)	
<b>AUTHORIZATION REQUIRED</b>				

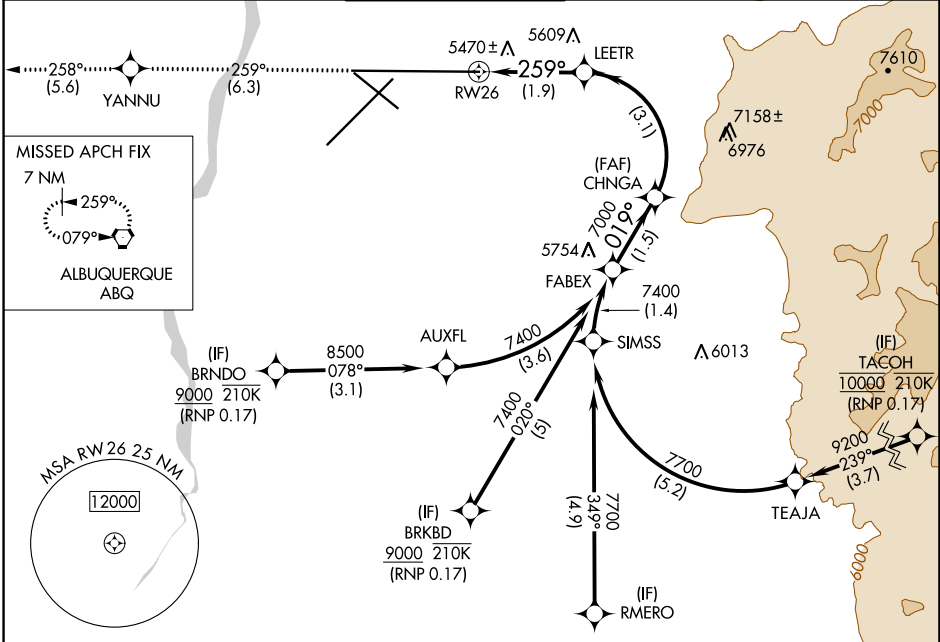
APP CRS	Rwy Idg	<b>13793</b>
<b>259°</b>	TDZE	<b>5355</b>
	Apt Elev	<b>5355</b>

# RNAV (RNP) Z RWY 26

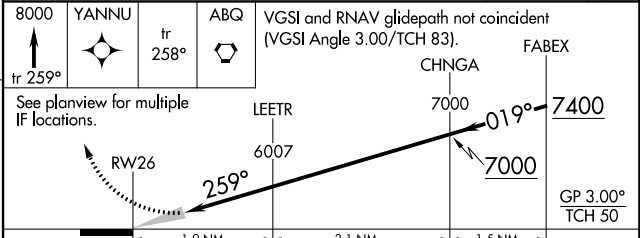
ALBUQUERQUE INTL SUNPORT (ABQ)

RNP AR APCH, RF required.		MISSED APPROACH: Climb to 8000 on track 259° to YANNU and on track 258° to ABQ VORTAC and hold.			
▼ For uncompensated Baro-VNAV systems, procedure NA ASR below -13°C or above 48°C.					

D-ATIS	ALBUQUERQUE APP CON	ALBUQUERQUE TOWER	GND CON	CLNC DEL	CPDLC
<b>118.0 257.7</b>	<b>123.9 354.1</b>	<b>120.3 351.9</b>	<b>121.9 348.6</b>	<b>119.2 259.3</b>	



ELEV 5355	<b>D</b>	TDZE 5355
-----------	----------	-----------



CATEGORY	A	B	C	D
RNP 0.17 DA	5745-1¼ 390 (400-1¼)			

MIRL Rwy 12-30  
 TDZ/CL Rwy 3 and 8  
 HIRL Rwy 3-21 and 8-26  
 REIL Rwy 21, 26, and 30

## AUTHORIZATION REQUIRED

SW-1, 22 FEB 2024 to 21 MAR 2024

SW-1, 22 FEB 2024 to 21 MAR 2024



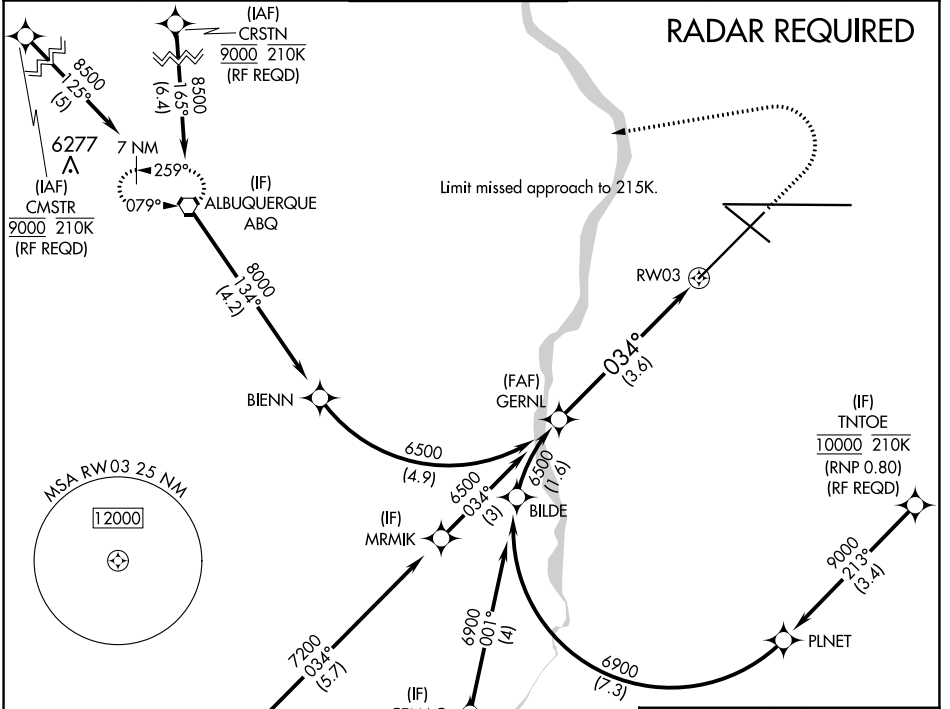
APP CRS <b>034°</b>	Rwy Idg <b>10000</b>
	TDZE <b>5312</b>
	Apt Elev <b>5355</b>

# RNAV (RNP) Z RWY 3

ALBUQUERQUE INTL SUNPORT (ABQ)

ASR	For uncompensated Baro-VNAV systems, procedure NA below -12°C (11°F) or above 45°C (114°F). For inop MALSRL, increase RNP 0.30 all Cats visibility to RVR 4000. GPS required.	MALSRL	MISSED APPROACH: Climb to 6200 then climbing left turn to 8000 direct ABQ VORTAC and hold.
-----	---	--------	--

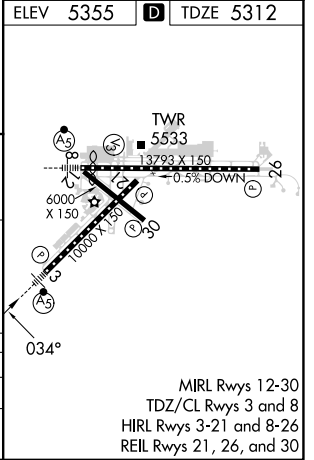
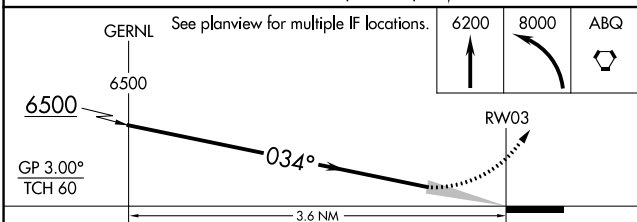
D-ATIS <b>118.0 257.7</b>	ALBUQUERQUE APP CON <b>123.9 354.1</b>	ALBUQUERQUE TOWER <b>120.3 351.9</b>	GND CON <b>121.9 348.6</b>	CLNC DEL <b>119.2 259.3</b>	CPDLC
------------------------------	---	---	-------------------------------	--------------------------------	-------



SW-1, 22 FEB 2024 to 21 MAR 2024

SW-1, 22 FEB 2024 to 21 MAR 2024

ELEV 5355	<b>D</b>	TDZE 5312
-----------	----------	-----------



CATEGORY	A	B	C	D
RNP 0.30 DA	5571/24		259 (300-½)	

## AUTHORIZATION REQUIRED

MIRL Rwy 12-30  
 TDZ/CL Rwy 3 and 8  
 HIRL Rwy 3-21 and 8-26  
 REIL Rwy 21, 26, and 30

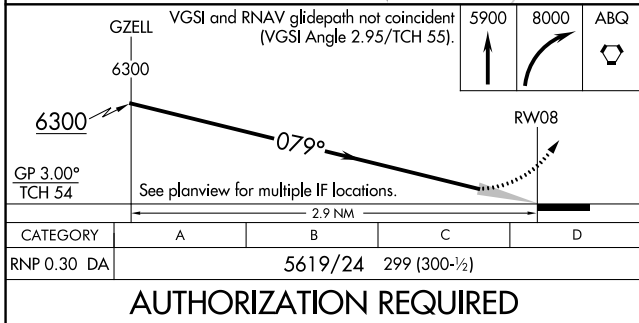
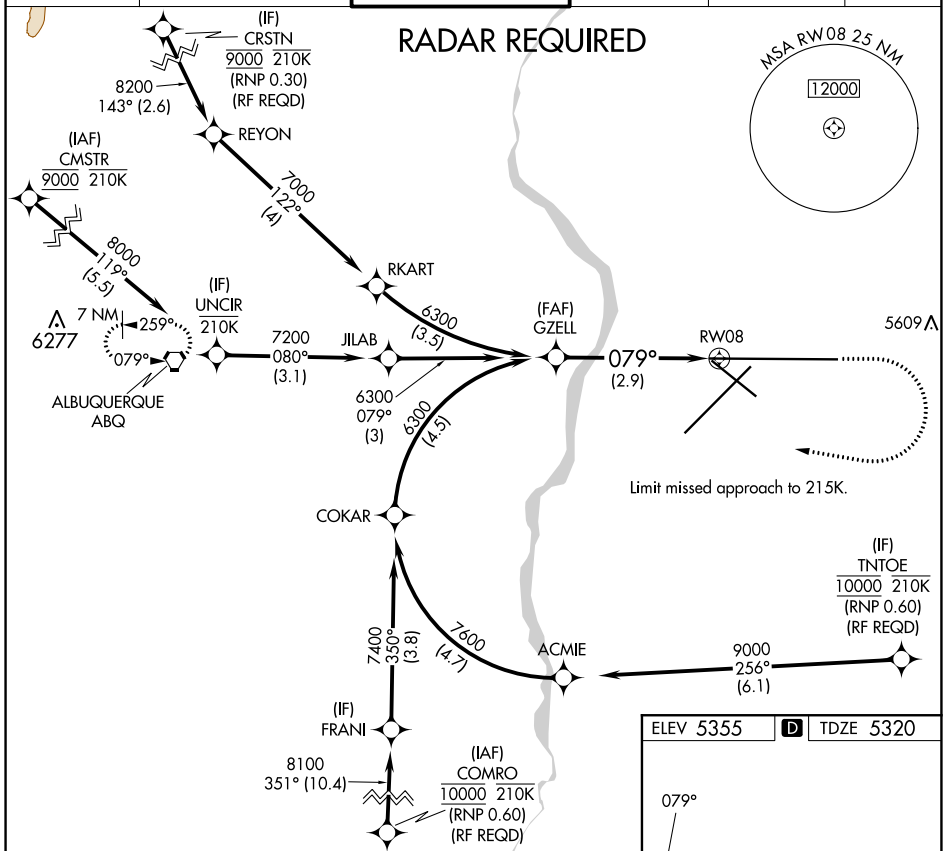
APP CRS <b>079°</b>	Rwy Idg <b>12793</b> TDZE <b>5320</b> Apt Elev <b>5355</b>
------------------------	--

# RNAV (RNP) Z RWY 8

ALBUQUERQUE INTL SUNPORT (ABQ)

<p><b>ASR</b> For uncompensated Baro-VNAV systems, procedure NA below -12°C (11°F) or above 47°C (117°F). For inop MALSRS, increase RNP 0.30 all Cats visibility to RVR 4700. GPS required.</p>	<p><b>MALSRS</b></p>	<p><b>MISSED APPROACH:</b> Climb to 5900 then climbing right turn to 8000 direct ABQ VORTAC and hold.</p>
---	----------------------	---

D-ATIS <b>118.0 257.7</b>	ALBUQUERQUE APP CON <b>123.9 354.1</b>	ALBUQUERQUE TOWER <b>120.3 351.9</b>	GND CON <b>121.9 348.6</b>	CLNC DEL <b>119.2 259.3</b>	CPDLC
------------------------------	---	---	-------------------------------	--------------------------------	-------



ELEV 5355	<b>D</b> TDZE 5320
-----------	--------------------

Plan view diagram showing RWY 8, RWY 30, RWY 31, RWY 26, and RWY 21 with various altitudes and distances.

TWR 5533  
13793 X 150  
6000 X 150  
10000 X 150

MIRL Rwy 12-30  
TDZ/CL Rwy 3 and 8  
HIRL Rwy 3-21 and 8-26  
REIL Rwy 21, 26, and 30

SW-1, 22 FEB 2024 to 21 MAR 2024

SW-1, 22 FEB 2024 to 21 MAR 2024

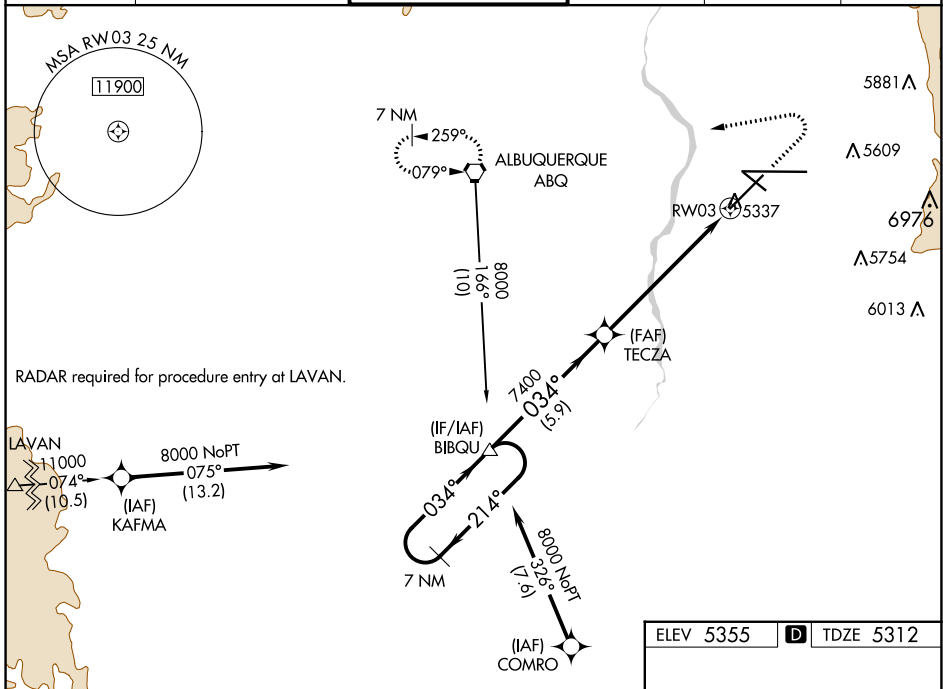
WAAS CH <b>78137</b> <b>W03A</b>	APP CRS <b>034°</b>	Rwy Idg TDZE Apt Elev	<b>10000</b> <b>5312</b> <b>5355</b>
--	------------------------	-----------------------------	--

# RNAV (GPS) Y RWY 3

ALBUQUERQUE INTL SUNPORT (ABQ)

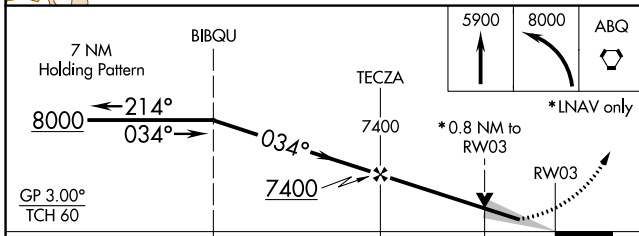
<p>DME/DME RNP-0.3 NA. For uncompensated Baro-VNAV systems, LNAV/VNAV NA below -13°C (9°F) or above 45°C (114°F).</p>	<p>MALSR</p>	<p>MISSED APPROACH: Climb to 5900 then climbing left turn to 8000 direct ABQ VORTAC and hold, continue climb-in-hold to 8000.</p>

D-ATIS <b>118.0 257.7</b>	ALBUQUERQUE APP CON <b>123.9 354.1</b>	ALBUQUERQUE TOWER <b>120.3 351.9</b>	GND CON <b>121.9 348.6</b>	CLNC DEL <b>119.2 259.3</b>	CPDLC
------------------------------	---	---	-------------------------------	--------------------------------	-------

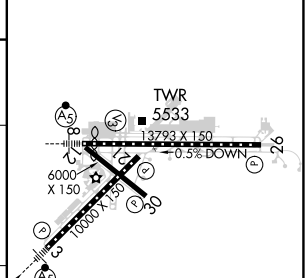


SW-1, 22 FEB 2024 to 21 MAR 2024

SW-1, 22 FEB 2024 to 21 MAR 2024



ELEV 5355	<b>D</b>	TDZE 5312
-----------	----------	-----------



CATEGORY	A	B	C	D
LPV DA		5512/24	200 (200-½)	
LNAV/VNAV DA		5562/24	250 (300-½)	
LNAV MDA		5620/24	308 (300-½)	
<b>C</b> CIRCLING	5840-1 485 (500-1)	5920-1 565 (600-1)	5940-1½ 585 (600-½)	6460-3 1105 (1200-3)

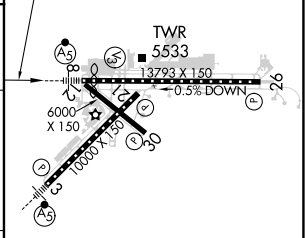
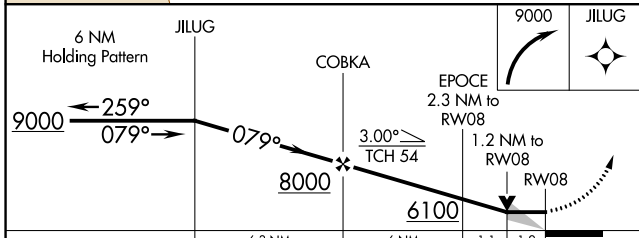
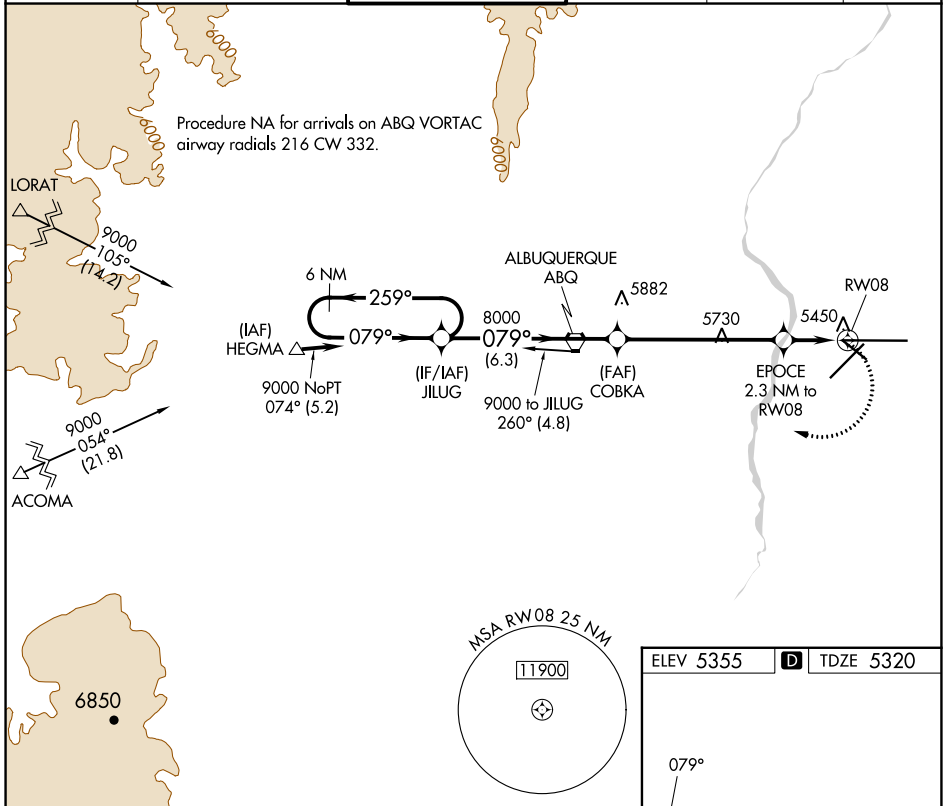
MIRL Rwy 12-30  
TDZ/CL Rwy 3 and 8  
HIRL Rwy 3-21 and 8-26  
REIL Rwy 21, 26, and 30

APP CRS <b>079°</b>	Rwy Idg <b>12793</b>
	TDZE <b>5320</b>
	Apt Elev <b>5355</b>

# RNAV (GPS) Y RWY 8

ALBUQUERQUE INTL SUNPORT (ABQ)

DME/DME RNP-0.3 NA.		MISSED APPROACH: Climbing right turn to 9000 direct JILUG and hold.			
D-ATIS <b>118.0 257.7</b>	ALBUQUERQUE APP CON <b>123.9 354.1</b>	ALBUQUERQUE TOWER <b>120.3 351.9</b>	GND CON <b>121.9 348.6</b>	CLNC DEL <b>119.2 259.3</b>	CPDLC



CATEGORY	A	B	C	D
LNVA MDA	5740/24	420 (400-½)	5740/40	420 (400-¾)
CIRCLING	5840-1 485 (500-1)	5920-1 565 (600-1)	5940-1½ 585 (600-½)	6460-3 1105 (1200-3)

MIRL Rwy 12-30  
 TDZ/CL Rwy 3 and 8  
 HIRL Rwy 3-21 and 8-26  
 REIL Rwy 21, 26, and 30

SW-1, 22 FEB 2024 to 21 MAR 2024

SW-1, 22 FEB 2024 to 21 MAR 2024

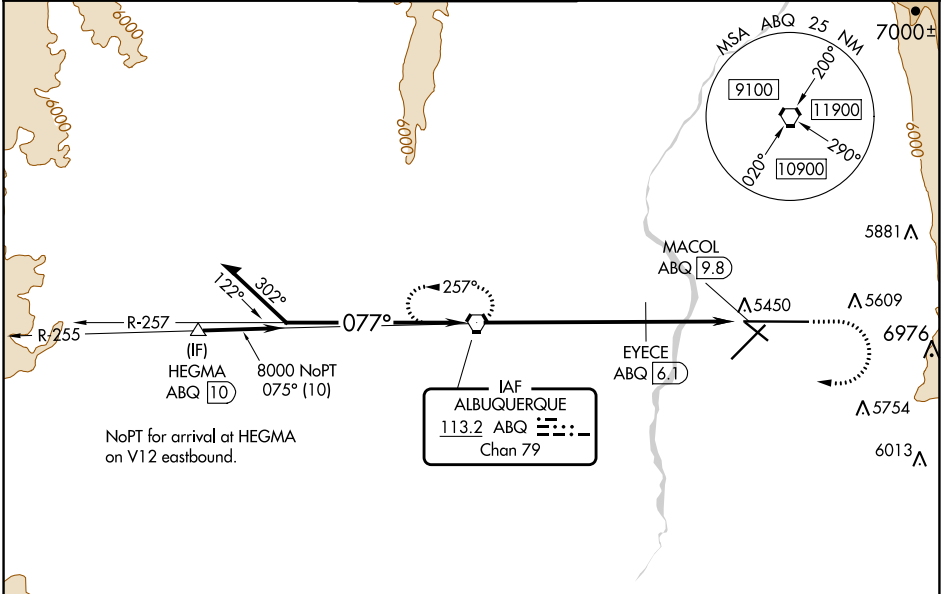
VORTAC ABQ <b>113.2</b> Chan <b>79</b>	APP CRS <b>077°</b>	Rwy Idg <b>12793</b> TDZE <b>5320</b> Apt Elev <b>5355</b>
--	------------------------	--

# VOR RWY 8

ALBUQUERQUE INTL SUNPORT (ABQ)

	EYECE FIX MINIMUMS: For inop ALS, increase S-8 Cat C/D/E visibility to RVR 5500. For inop ALS, increase S-8 Cat E visibility to 3 SM. Circling Cat E NA southeast of Rwy 3-21 and northeast of Rwy 12-30.	MALSR 	MISSED APPROACH: Climb to 5800 then climbing right turn to 8000 direct ABQ VORTAC and hold.

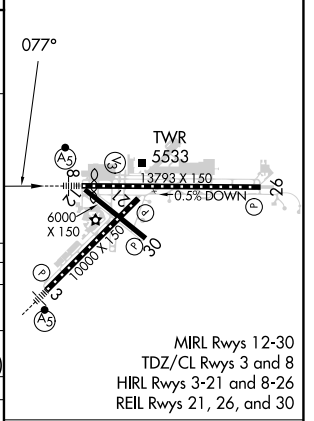
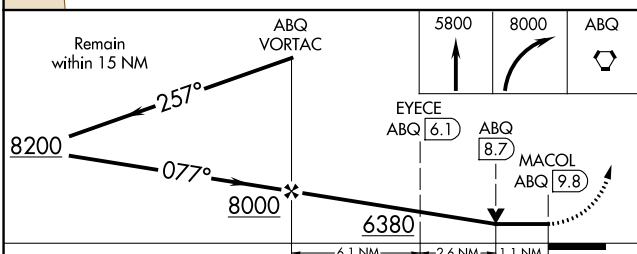
D-ATIS <b>118.0 257.7</b>	ALBUQUERQUE APP CON <b>123.9 354.1</b>	ALBUQUERQUE TOWER <b>120.3 351.9</b>	GND CON <b>121.9 348.6</b>	CLNC DEL <b>119.2 259.3</b>	CPDLC
------------------------------	---	---	-------------------------------	--------------------------------	-------



SW-1, 22 FEB 2024 to 21 MAR 2024

SW-1, 22 FEB 2024 to 21 MAR 2024

ELEV 5355		TDZE 5320
-----------	--	-----------



CATEGORY	A	B	C	D	E
S-8	6380/40 1060 (1100-3/4)	6380/55 1060 (1100-1)	6380-2 1/2 1060 (1100-2 1/2)		
CIRCLING	6380-1 1/4 1025 (1100-1 1/4)	6380-1 1/2 1025 (1100-1 1/2)	6380-3 1105 (1100-3)	6460-3 1105 (1200-3)	7460-3 2105 (2200-3)
EYECE FIX MINIMUMS					
S-8	5700/24	380 (400-1/2)	5700/40 380 (400-3/4)		
CIRCLING	5840-1 485 (500-1)	5920-1 565 (600-1)	5940-1 1/2 585 (600-1 1/2)	6460-3 1105 (1200-3)	7460-3 2105 (2200-3)

FAF to MAP 9.8 NM					
Knots	60	90	120	150	180
Min:Sec	9:48	6:32	4:54	3:55	3:16