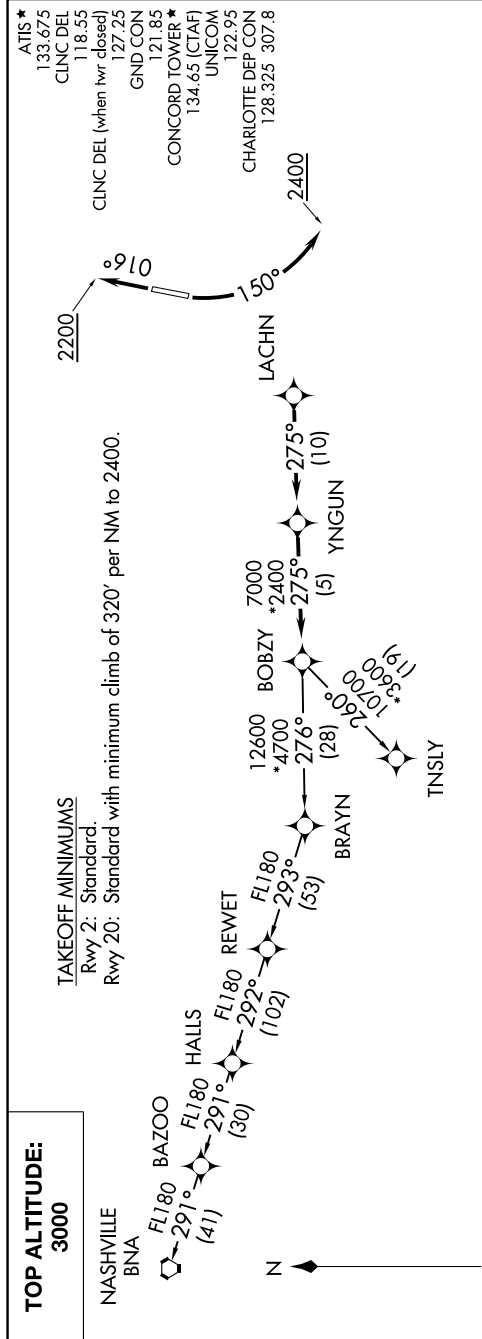


# BOBZY FOUR DEPARTURE (RNAV)

SE-2, 22 FEB 2024 to 21 MAR 2024



**TOP ALTITUDE:**  
3000

NASHVILLE  
BNA

FL180 BAZOO

FL180 HALLS

FL180 REWET

FL180

BRAYN

276°

(28)

BOBZY

275°

(5)

YNGUN

275°

(110)

LACHN

2400

150°

2400

010

2200

ATIS \*

133.675

CINC DEL

118.55

127.25

GND CON

121.85

CONCORD TOWER \*

134.65 (CTAF)

UNICOM

122.95

CHARLOTTE DEP CON

128.325 307.8

CINC DEL (when hwr closed)

CONCORD TOWER \*

134.65 (CTAF)

UNICOM

122.95

CHARLOTTE DEP CON

128.325 307.8

## DEPARTURE ROUTE DESCRIPTION

**TAKEOFF RWY 2:** Climb heading 016° to 2200, thence . . . .  
**TAKEOFF RWY 20:** Climbing left turn heading 150° to 2400, thence . . . .

. . . . on heading assigned by ATC, expect RADAR vectors to LACHN, then on depicted route to BOBZY, then on assigned transition. Maintain 3000. Expect clearance to filed altitude within 10 minutes after departure.

NASHVILLE TRANSITION (BOBZY4.BNA)  
TNSLY TRANSITION (BOBZY4.TNSLY)

- NOTE: For turbojets only.
- NOTE: DME/DME/IRU or GPS required.
- NOTE: RNAV 1.
- NOTE: RADAR required.
- NOTE: If unable to accept climb rates, advise ATC on initial contact.
- NOTE: Upon reaching 10000 MSL, accelerate to and maintain 280K, if unable advise ATC.

NOTE: Chart not to scale.

# BOBZY FOUR DEPARTURE (RNAV)

SE-2, 22 FEB 2024 to 21 MAR 2024