

WAAS CH 86503 W09A	APP CRS 090°	Rwy Idg TDZE Apt Elev	6500 16 17
--	------------------------	-----------------------------	---------------------------------------

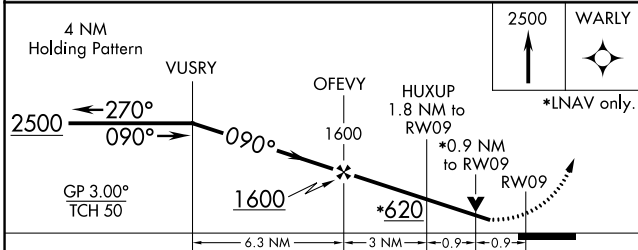
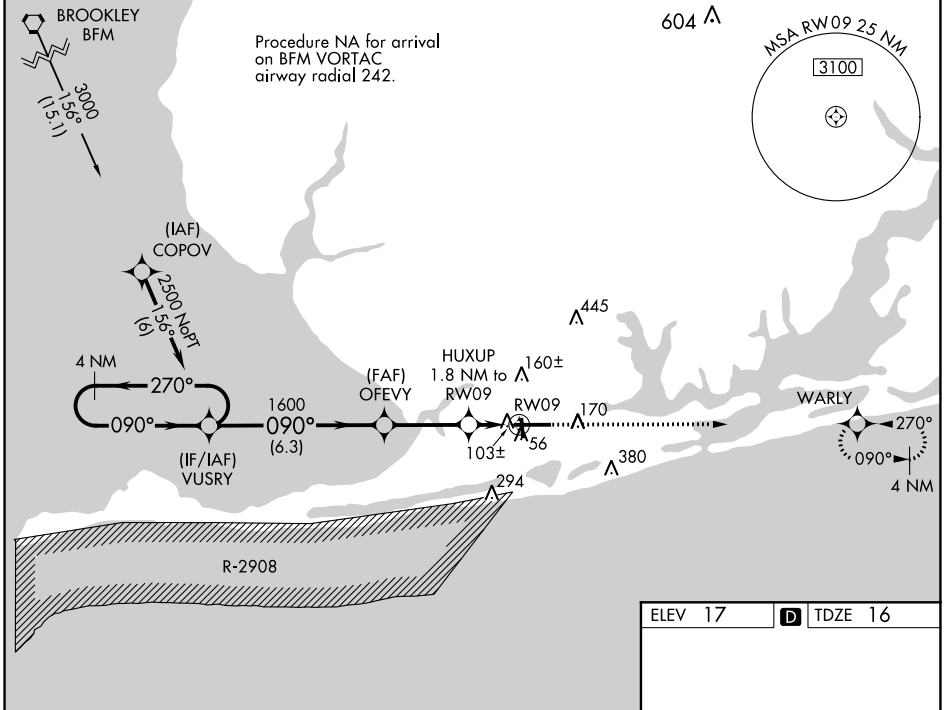
RNAV (GPS) RWY 9

GULF SHORES INTL/JACK EDWARDS FLD (JKA)

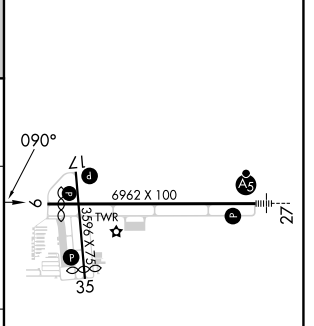
For uncompensated Baro-VNAV systems, LNAV/VNAV NA below -15°C (5°F) or above 54°C (130°F).
 Baro-VNAV and VDP NA when using Pensacola Intl altimeter setting. Circling Rwy 17, 35 NA at night. Rwy 9 helicopter visibility reduction below 3/4 SM NA. DME/DME RNP-0.3 NA. When local altimeter setting not received, use Pensacola Intl altimeter setting and increase LPV DA to 388 feet, LNAV/VNAV DA to 362 feet, and all visibilities 1/2 SM; increase all MDAs 80 feet and visibility Cats C and D 1/4 SM.

MISSED APPROACH: Climb to 2500 direct WARLY and hold.

ATIS 134.525	PENSACOLA APP CON 120.65 270.8	GULF SHORES TOWER * 118.65 (CTAF) 0	CLNC DEL 121.7	CLNC DEL 124.55 (When twr dsd)	GND CON 121.7	UNICOM 122.7
------------------------	--	---	--------------------------	--	-------------------------	------------------------



ELEV 17	D	TDZE 16
---------	---	---------



CATEGORY	A	B	C	D
LPV DA		310-1	294 (300-1)	
LNAV/VNAV DA		284-7/8	268 (300-7/8)	
LNAV MDA		360-1	344 (400-1)	
CIRCLING	480-1	463 (500-1)	740-2 723 (800-2)	740-2 1/4 723 (800-2 1/4)

MIRL Rwy 17-35
HIRL Rwy 9-27

SE-4, 22 FEB 2024 to 21 MAR 2024

SE-4, 22 FEB 2024 to 21 MAR 2024