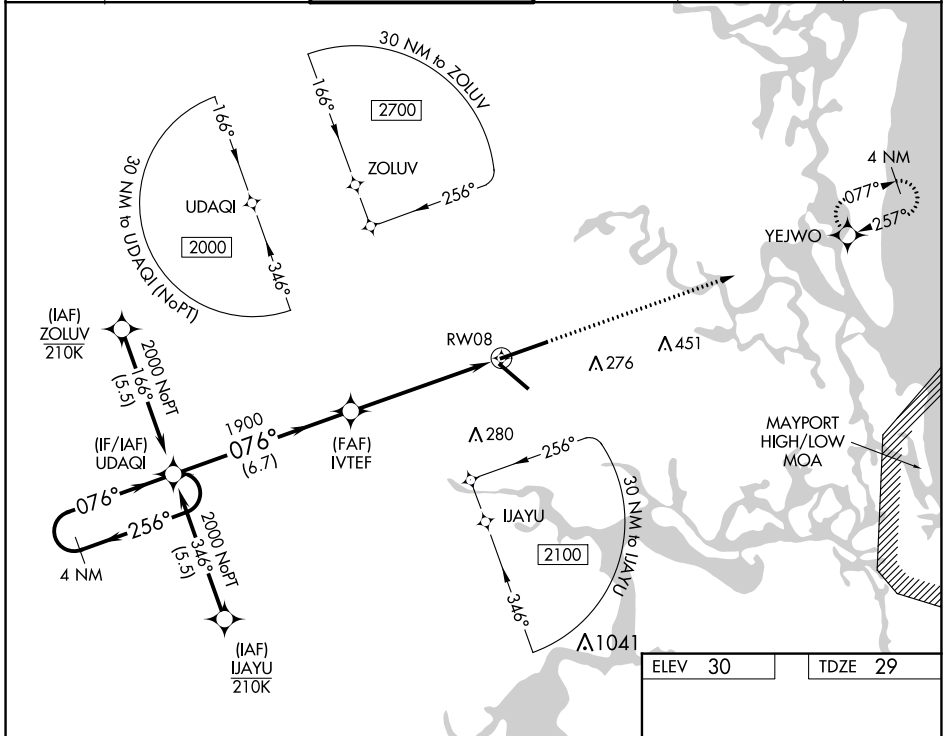


| | | |
|--|------------------------|--|
| WAAS CH 50526 W08A | APP CRS 076° | Rwy Idg 10000 TDZE 29 Apt Elev 30 |
|--|------------------------|--|

RNAV (GPS) Z RWY 8

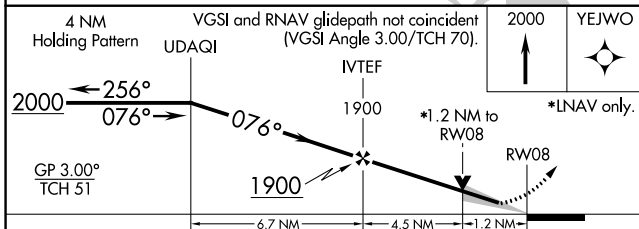
JACKSONVILLE INTL (JAX)

| | | | | | |
|--|--|--|-------------------------------|---|-------|
| For uncompensated Baro-VNAV systems, procedure NA below -5°C (23°F) or above 54°C (130°F). DME/DME RNP-0.3 NA. | | | ALSF-2 | MISSED APPROACH: Climb to 2000 direct YEJWO and hold. | |
| D-ATIS 125.85 | JACKSONVILLE APP CON 119.0 269.9 | JACKSONVILLE TOWER 118.3 317.7 | GND CON 121.9 348.6 | CLNC DEL 119.5 290.275 | CPDLC |

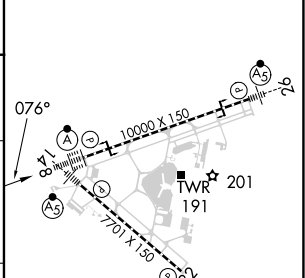


SE-3, 22 FEB 2024 to 21 MAR 2024

SE-3, 22 FEB 2024 to 21 MAR 2024



| | |
|---------|---------|
| ELEV 30 | TDZE 29 |
|---------|---------|



| CATEGORY | A | B | C | D |
|--------------|-------------------|---|---------------------|--------------------|
| LPV DA | 229/18 | | 200 (200-½) | |
| LNAV/VNAV DA | 363/32 | | 334 (400-⅙) | |
| LNAV MDA | 480/24 | | 451 (500-½) | 480/45 451 (500-⅔) |
| CIRCLING | 520-1 490 (500-1) | | 580-1½ 550 (600-1½) | 640-2 610 (700-2) |

REIL Rwy 32
TDZ/CL Rwys 8, 14, and 26
HIRL Rwys 8-26 and 14-32