

APP CRS	Rwy Idg	<b>3333</b>
<b>014°</b>	TDZE	<b>912</b>
	Apt Elev	<b>912</b>

# RNAV (GPS) RWY 36

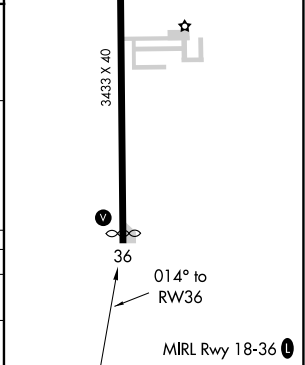
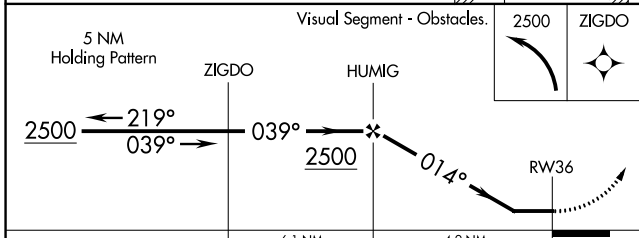
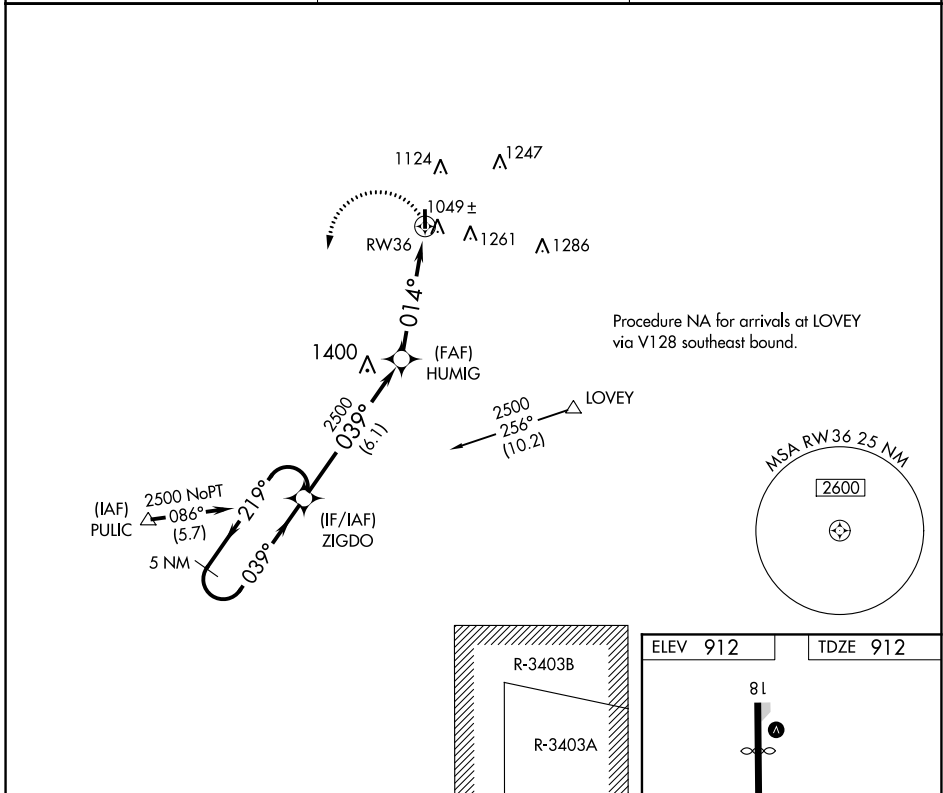
GREENSBURG MUNI (I34)

RNP APCH - GPS.

**▽** Use Columbus Muni altimeter setting; if not received, use Indianapolis Intl altimeter setting and increase all MDAs 40 feet and increase LNAV visibility Cat C ½ SM.  
**△** NA Circling Rwy 18 NA at night. Rwy 36 helicopter visibility reduction below ¾ SM NA.

**MISSED APPROACH:**  
 Climbing left turn to 2500  
 direct ZIGDO and hold.

BAK AWOS-3 <b>119.75</b>	INDIANAPOLIS APP CON <b>127.15</b>	CTAF <b>122.90</b>
-----------------------------	---------------------------------------	-----------------------



CATEGORY	A	B	C	D
LNAV MDA	1560-1	648 (700-1)	1560-1 7/8 648 (700-1 7/8)	NA
<b>C</b> CIRCLING	1680-1 768 (800-1)	1680-1 1/4 768 (800-1 1/4)	1680-2 1/4 768 (800-2 1/4)	NA

EC-2, 08 SEP 2022 to 06 OCT 2022

EC-2, 08 SEP 2022 to 06 OCT 2022

VOR/DME SHB <b>116.15</b> Chan <b>108 (Y)</b>	APP CRS <b>142°</b>	Rwy Idg TDZE Apt Elev	<b>N/A</b> <b>N/A</b> <b>912</b>
---	------------------------	-----------------------------	--

# VOR-A

GREENSBURG MUNI (I34)

**▼** Use Columbus Muni altimeter setting; if not received, use Indianapolis Intl altimeter setting and increase all MDAs 40 feet. Circling Rwy 18 NA at night. Rwy 18 helicopter visibility reduction below 1 SM NA.

**▲ NA** MISSED APPROACH: Climb to 2000 then climbing right turn to 2700 via SHB R-142 to APODD INT/SHB 18 DME/RADAR and hold.

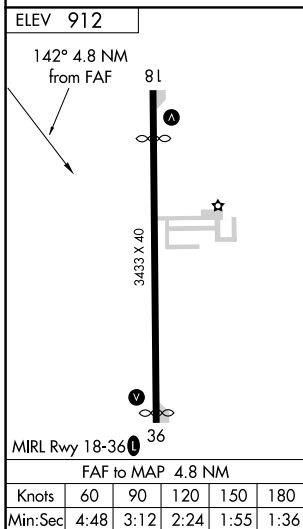
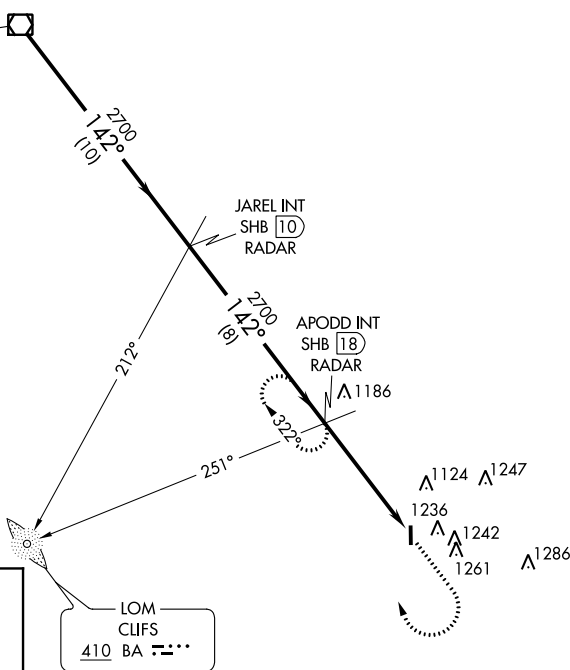
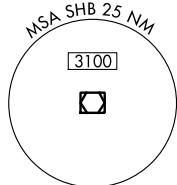
BAK AWOS-3 <b>119.75</b>	INDIANAPOLIS APP CON <b>127.15</b>	CTAF <b>122.9 0</b>
-----------------------------	---------------------------------------	------------------------

**▲ 1542**

## ADF, DME or RADAR REQUIRED

IAF  
SHELBYVILLE  
116.15 SHB **108 (Y)**  
Chan 108 (Y)

Procedure NA for arrival on SHB VOR/DME airway radials 124 CW 171.



	2000	2700	SHB R-142	APODD INT
	↑	↷		
	SHB VOR/DME	JAREL INT SHB 10 RADAR	APODD INT SHB 18 RADAR	SHB 22.8
	2700	2700	2700	
	142°			
	10 NM	8 NM	4.8 NM	
CATEGORY	A	B	C	D
<b>☐</b> CIRCLING	1680-1 768 (800-1)	1680-1¼ 768 (800-1¼)	1680-2¼ 768 (800-2¼)	NA

EC-2, 08 SEP 2022 to 06 OCT 2022

EC-2, 08 SEP 2022 to 06 OCT 2022