

# RNAV (RNP) Z RWY 17R VALLEY INTL (HRL)

APP CRS	Rwy Idg	<b>8301</b>
<b>176°</b>	TDZE	<b>35</b>
	Apt Elev	<b>36</b>

RNP AR APCH - GPS.

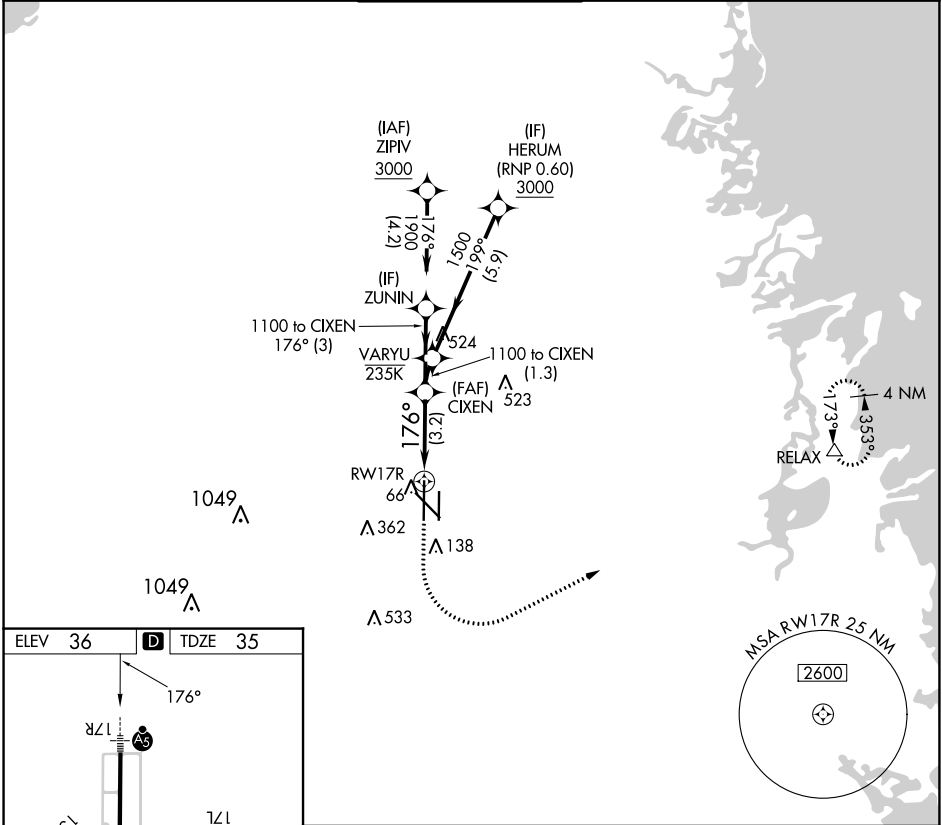
MALSR



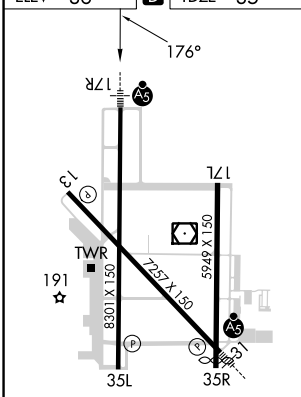
MISSED APPROACH: Climb to 500 then climbing left turn to 2000 direct RELAX and hold.

▼ For uncompensated Baro-VNAV systems, procedure NA below -1°C or above 54°C. For inop ALS, increase RNP 0.30 all Cats visibility to RVR 4500.

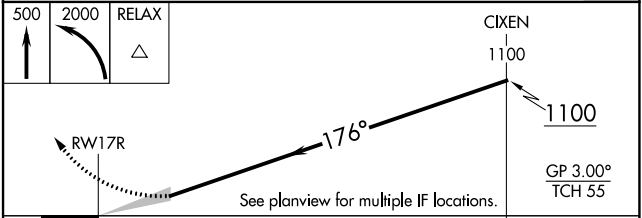
ATIS <b>124.85</b>	VALLEY APP CON <b>120.7 279.5</b>	HARLINGEN TOWER★ <b>119.3(CTAF) 0 317.6</b>	GND CON <b>121.7</b>	UNICOM <b>122.95</b>
-----------------------	--------------------------------------	--	-------------------------	-------------------------



ELEV	36	<b>D</b>	TDZE	35
------	----	----------	------	----



MIRL Rwy 17L-35R  
REIL Rwys 13 and 17L  
HIRL Rwys 13-31 and 17R-35L



CATEGORY	A	B	C	D
RNP 0.30 DA		345/24	310 (400-½)	

## AUTHORIZATION REQUIRED

SC-3, 22 FEB 2024 to 21 MAR 2024

SC-3, 22 FEB 2024 to 21 MAR 2024