

RADAR and DME required.

TOP ALTITUDE:  
ASSIGNED BY ATC

TAKEOFF MINIMUMS

Rwy 14: 300-1 or standard with a minimum climb of 420' per NM to 300.  
Rwy 32: Standard.

CTAF  
122.8  
HOUSTON DEP CON  
134.45 284.0

FORT STOCKTON  
116.9 FST  
Chan 116  
N30°57.13'  
W102°58.54'  
L-19, H-6

SAN ANTONIO  
116.8 SAT  
Chan 115  
N29°38.64'-W98°27.68'  
L-19, H-7

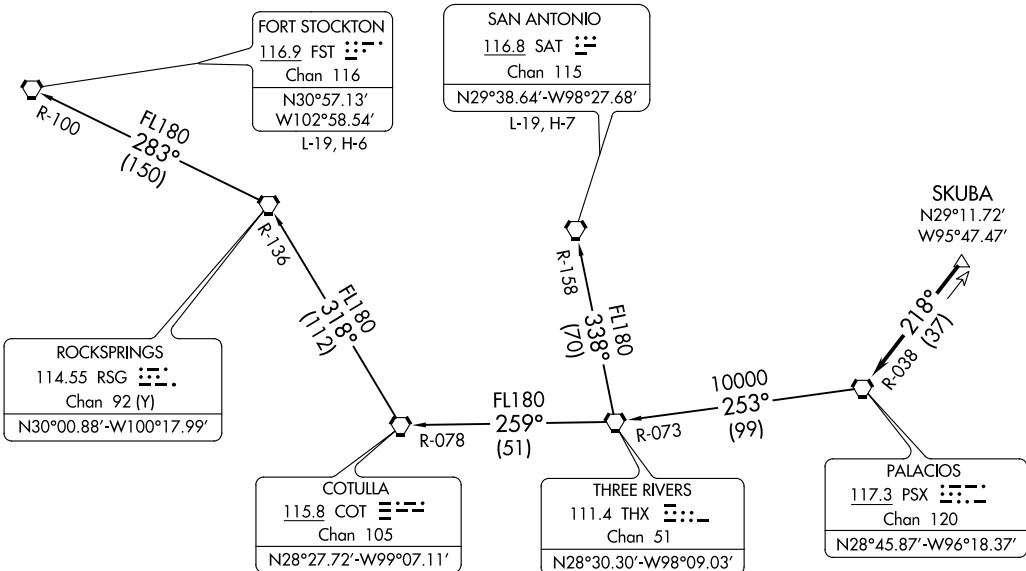
SKUBA  
N29°11.72'  
W95°47.47'

ROCKSPRINGS  
114.55 RSG  
Chan 92 (Y)  
N30°00.88'-W100°17.99'

COTULLA  
115.8 COT  
Chan 105  
N28°27.72'-W99°07.11'

THREE RIVERS  
111.4 THX  
Chan 51  
N28°30.30'-W98°09.03'

PALACIOS  
117.3 PSX  
Chan 120  
N28°45.87'-W96°18.37'



NOTE: Chart not to scale.

(NARRATIVE ON FOLLOWING PAGE)

PALACIOS THREE DEPARTURE  
(PSX3, PSX) 03NOV22

BAYTOWN, TEXAS  
BAYTOWN (HPY)

PALACIOS THREE DEPARTURE  
(PSX3, PSX) 22307

BAYTOWN (HPY)  
BAYTOWN, TEXAS

AL-5757 (FAA)

# PALACIOS THREE DEPARTURE



## DEPARTURE ROUTE DESCRIPTION

TAKEOFF ALL RUNWAYS: When entering controlled airspace, climb on assigned heading for RADAR vectors to SKUBA. Maintain ATC assigned altitude. Expect filed altitude 10 minutes after departure, thence . . . .

. . . . on PSX R-038 to PSX VORTAC.

FORT STOCKTON TRANSITION (PSX3.FST): From over PSX VORTAC on PSX R-253 and THX R-073 to THX VORTAC, then on THX R-259 and COT R-078 to COT VORTAC, then on COT R-318 and RSG R-136 to RSG VORTAC, then on RSG R-283 and FST R-100 to FST VORTAC.

SAN ANTONIO TRANSITION (PSX3.SAT): From over PSX VORTAC on PSX R-253 and THX R-073 to THX VORTAC, then on SAT R-158 to SAT VORTAC.

SC-5, 22 FEB 2024 to 21 MAR 2024

SC-5, 22 FEB 2024 to 21 MAR 2024