

| | | | |
|--|------------------------|-----------------------------|---|
| WAAS CH 99725 W34A | APP CRS 335° | Rwy Idg TDZE Apt Elev | 5010 665 689 |
|--|------------------------|-----------------------------|---|

RNAV (GPS) RWY 34

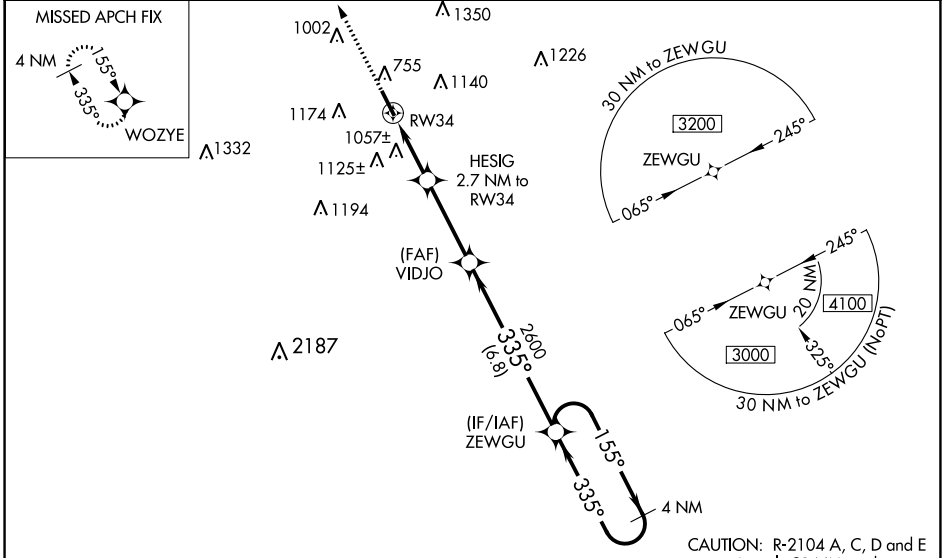
ABERNATHY FLD (GZS)

RNP APCH - GPS.

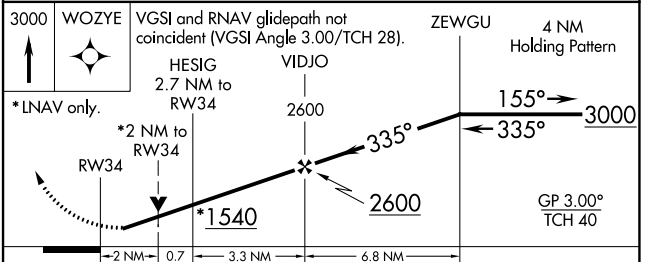
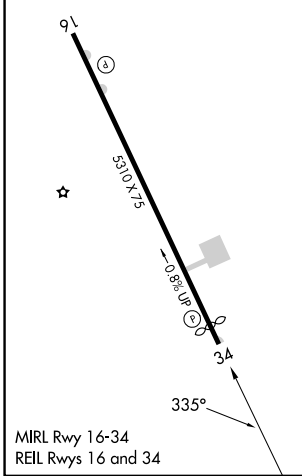
NA Baro-VNAV NA when using Huntsville Exec Tom Sharp Jr Fld altimeter setting. For uncompensated Baro-VNAV systems, LNAV/VNAV NA below -16°C (4°F) or above 39°C (102°F). Night landing: Rwy 16 NA. Helicopter visibility reduction below 3/4 SM NA. When local altimeter setting not received, use Huntsville Exec Tom Sharp Jr Fld altimeter setting: increase LPV DA to 996 feet and all visibilities 1/8 SM; increase LNAV/VNAV DA to 1524 feet and all visibilities 1/4 SM; increase all MDA 100 feet and visibility LNAV Cats C/D 1/8 SM and Circling Cats A/B 1/4 SM and Cat C 1/2 SM. VDP NA with Huntsville Exec Tom Sharp Jr Fld altimeter setting.

MISSED APPROACH: Climb to 3000 direct WOZYE and hold.

| | | |
|--------------------------|--|-------------------------------|
| AWOS-3 118.275 | MEMPHIS CENTER 125.85 379.25 | UNICOM 122.8 (CTAF) |
|--------------------------|--|-------------------------------|



| | |
|-----------------|-----------------|
| ELEV 689 | TDZE 665 |
|-----------------|-----------------|



| CATEGORY | A | B | C | D |
|--------------|-----------------------|-----------------------|-------------------------------|------------------------|
| LPV DA | 915-1 | | 250 (300-1) | |
| LNAV/VNAV DA | 1443-2 3/4 | | 778 (800-2 3/4) | |
| LNAV MDA | 1320-1 | 655 (700-1) | 1320-1 7/8 | 655 (700-1 7/8) |
| CIRCLING | 1420-1 731 (800-1) | 1480-1 791 (800-1) | 1480-2 1/4 791 (800-2 1/4) | 1640-3 951 (1000-3) |

SE-1, 22 FEB 2024 to 21 MAR 2024

SE-1, 22 FEB 2024 to 21 MAR 2024