

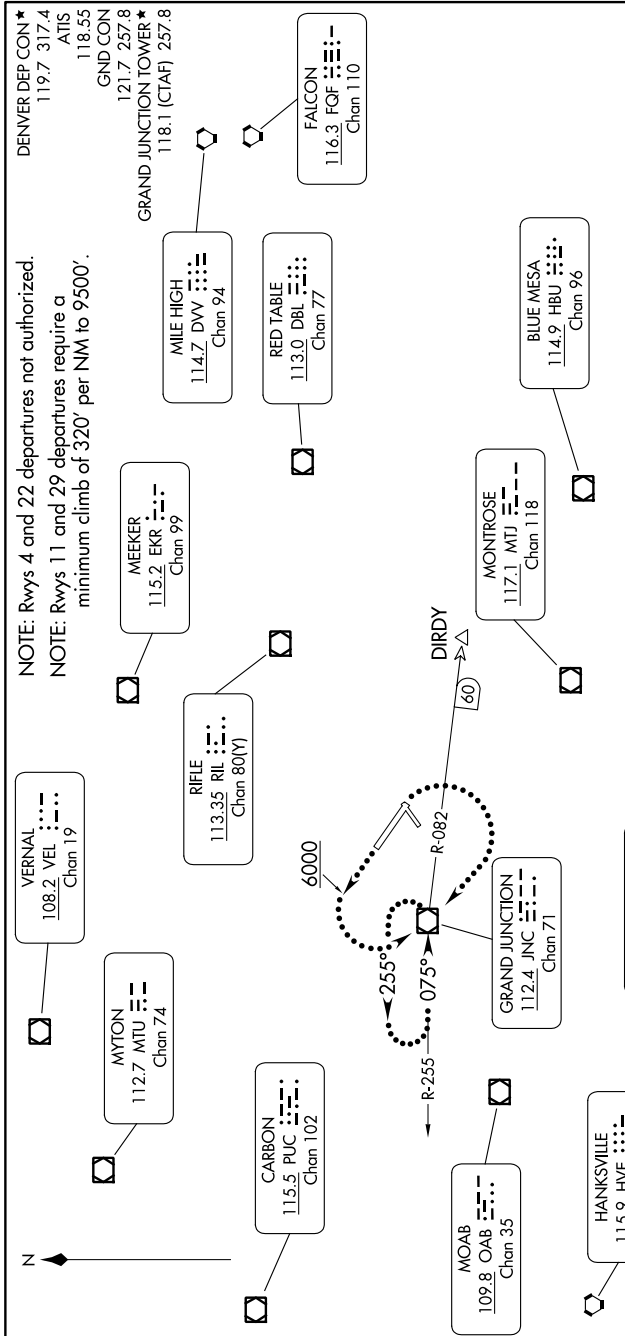
GRAND MESA ONE DEPARTURE

AL-634 (FAA)

GRAND JUNCTION RGNL (GJT)

GRAND JUNCTION, COLORADO

SW-1, 22 FEB 2024 to 21 MAR 2024



NOTE: Rvys 4 and 22 departures not authorized.
 NOTE: Rvys 11 and 29 departures require a minimum climb of 320' per NM to 9500'.

DENVER DEP CON *
 119.7 317.4
 ATIS 118.55
 GND CON 121.7 257.8
 GRAND JUNCTION TOWER *
 118.1 (CTAF) 257.8

DEPARTURE ROUTE DESCRIPTION

Fly assigned heading for vectors to assigned fix/route. Maintain 14000 or assigned lower altitude. Expect filed altitude 10 minutes after departure.

LOST COMMUNICATIONS: If no transmissions are received within 1 minute after departure, Runway 11: Climbing right turn direct to JNC VOR/DME; Runway 29: Climb to 6000' then climbing left turn direct to JNC VOR/DME. Aircraft departing JNC R-221 clockwise JNC R-060, depart JNC VOR/DME on course. All other aircraft climb in JNC VOR/DME holding pattern to cross JNC VOR/DME at or above: R-061 clockwise R-130 9500'; R-131 clockwise R-220 10500'.

NOTE: Chart not to scale.

SW-1, 22 FEB 2024 to 21 MAR 2024

GRAND MESA ONE DEPARTURE