

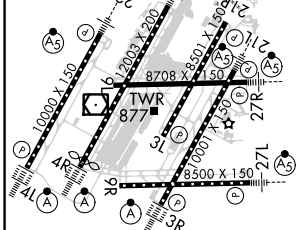
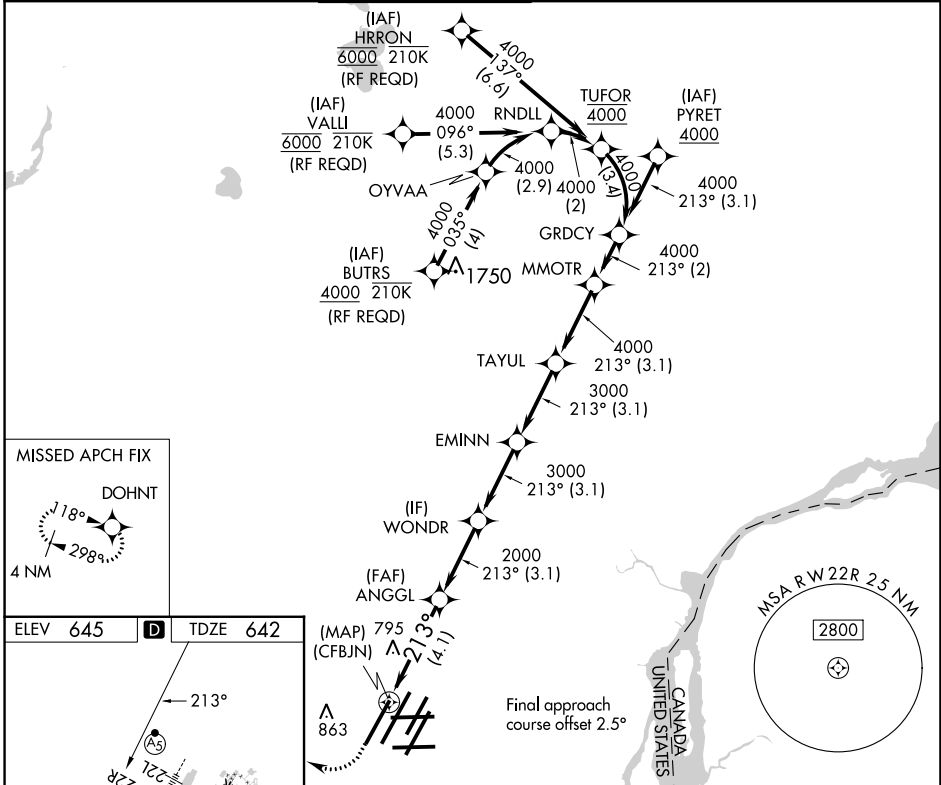
APP CRS <b>213°</b>	Rwy Idg TDZE Apt Elev	<b>10000</b> <b>642</b> <b>645</b>
------------------------	-----------------------------	--

# RNAV (RNP) U RWY 22R

DETROIT METRO WAYNE COUNTY (DTW)

RNP AR APCH.	MALS R	MISSED APPROACH: Climb to 1100 then climbing right turn to 4000 direct DOHNT and hold.
▼ For uncompensated Baro-VNAV systems, procedure NA below -19°C (-2°F) or above 54°C (130°F). Simultaneous approach authorized. For inop ALS, increase RNP 0.30 all Cats visibility to RVR 5500.		

D-ATIS <b>133.675</b>	DETROIT APP CON <b>124.05 284.0</b>	METRO TOWER <b>135.0 317.725</b>	GND CON <b>121.8</b> (NW) <b>119.45</b> (NE) <b>132.725</b> (SW) <b>119.25</b> (SE)	CLNC DEL <b>120.65</b>	CPDLC
--------------------------	--	-------------------------------------	---	---------------------------	-------



1100	4000	DOHNT	VGSi and RNAV glidepath not coincident (VGSi Angle 3.00/TCH 71).			
			EMINN	TAYUL	MMOTR	GRDCY
			ANGGL	WONDRA	4000	4000
			2000	3000	3000	4000
			2000			GP 3.00° TCH 55
			4.1 NM	3.1 NM	3.1 NM	3.1 NM
			3.1 NM	3.1 NM	3.1 NM	2 NM

CATEGORY	A	B	C	D
RNP 0.30 DA	987/30		345 (400-5%)	
<b>AUTHORIZATION REQUIRED</b>				

EC-1, 22 FEB 2024 to 21 MAR 2024

EC-1, 22 FEB 2024 to 21 MAR 2024