

| | | |
|--|------------------------|---|
| LOC/DME I-DJK 109.95 Chan 36 (Y) | APP CRS 022° | Rwy Idg 7026 TDZE 913 Apt Elev 913 |
|--|------------------------|---|

ILS or LOC RWY 2

DE KALB TAYLOR MUNI (DKB)

RADAR required for procedure entry. DME or RADAR required.

VDP NA with Aurora altimeter setting. When local altimeter setting not received, use Aurora altimeter setting and increase DA to 1174 feet and all MDA 80 feet; CETAN fix minimums increase Circling Cat C and D visibility 1/4 SM. For inop ALS, increase S-ILS 2 all Cats visibility to 3/8 SM. CETAN fix minimums: For inop ALS, increase S-LOC 2 Cat C and D visibility to 1 SM.

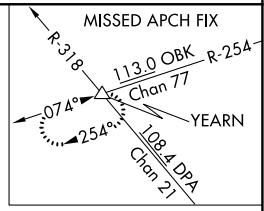
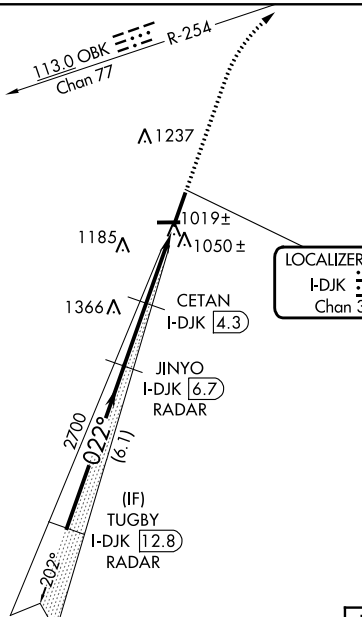
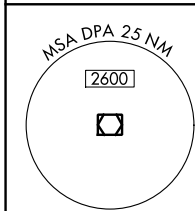


MISSED APPROACH:
Climb to 3000 on heading 022° and OBK VOR/DME R-254 to YEARN 1nt and hold.

AWOS-3
119.075

CHICAGO APP CON
133.5 349.0

UNICOM
122.7(CTAF) **0**

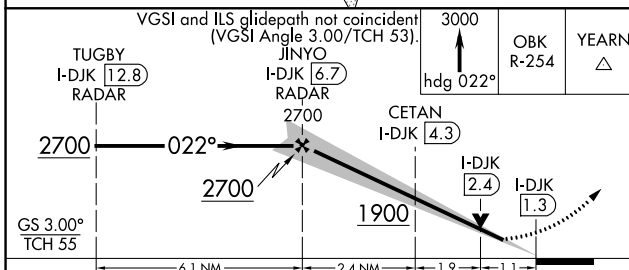


LOCALIZER 109.95
I-DJK
Chan 36 (Y)

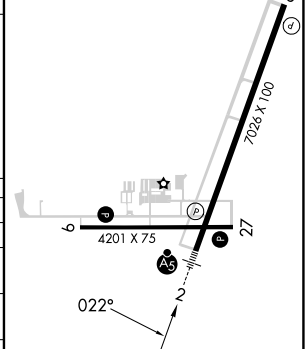
DUPAGE
108.4 DPA
Chan 21

EC-3, 22 FEB 2024 to 21 MAR 2024

EC-3, 22 FEB 2024 to 21 MAR 2024



| | |
|------------------------|----------|
| ELEV 913 | TDZE 913 |
| MIRL Rwys 2-20 | |
| MIRL Rwys 9-27 | |
| REIL Rwys 9, 20 and 27 | |



| CATEGORY | A | B | C | D |
|-----------------------------------|--------------------------------|--------------------------------|-----------------------|-------------------------------|
| S-ILS 2 | 1113-1/2 | | 200 (200-1/2) | |
| S-LOC 2 | 1900-3/4 987 (1000-3/4) | 1900-1 987 (1000-1) | 1900-2 1/2 | 987 (1000-2 1/2) |
| CIRCLING | 1900-1 1/4 987 (1000-1 1/4) | 1900-1 1/2 987 (1000-1 1/2) | 1900-3 | 987 (1000-3) |
| CETAN FIX MINIMUMS (DME REQUIRED) | | | | |
| S-LOC 2 | 1280-1/2 | 367 (400-1/2) | 1280-5/8 | 367 (400-5/8) |
| CIRCLING | 1360-1 447 (500-1) | 1500-1 587 (600-1) | 1600-2 687 (700-2) | 1740-2 3/4 827 (900-2 3/4) |

| | | | | | |
|-------------------|------|------|------|------|------|
| FAF to MAP 5.4 NM | | | | | |
| Knots | 60 | 90 | 120 | 150 | 180 |
| Min:Seq | 5:24 | 3:36 | 2:42 | 2:10 | 1:48 |