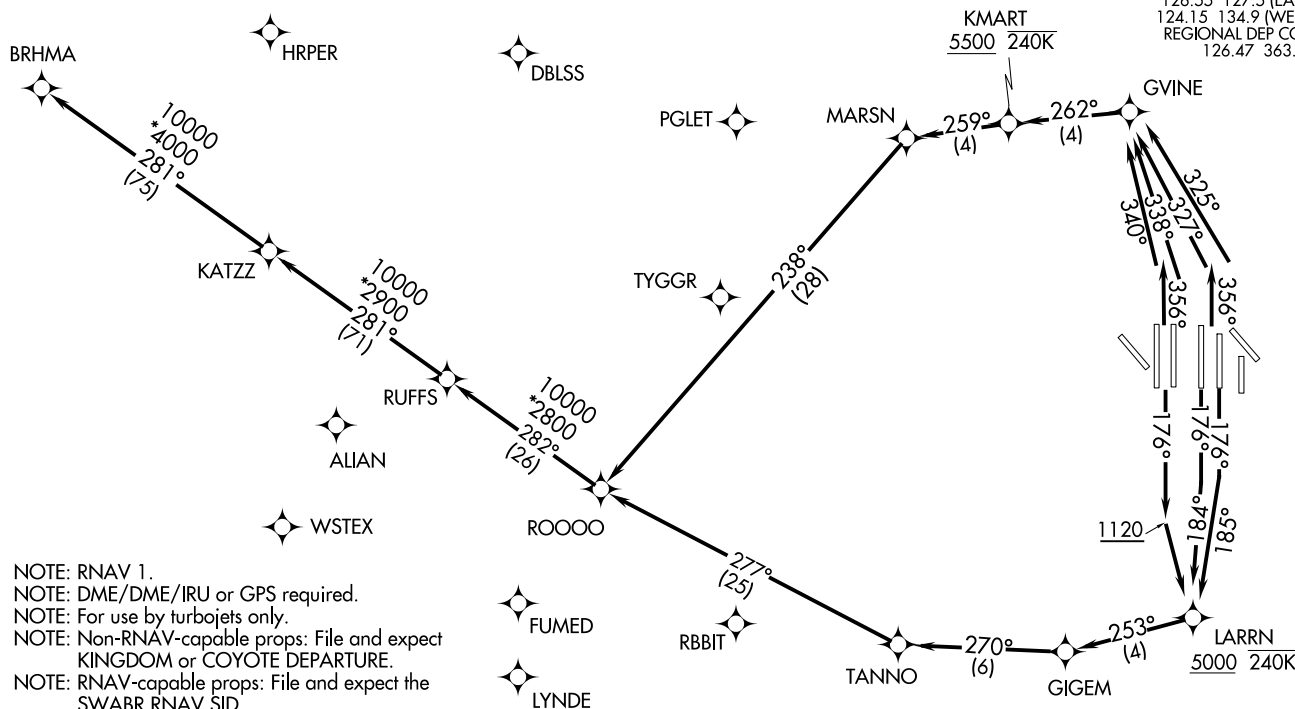


(KATZZZ.KATZZ)	23334	AL-6039 (FAA)	DALLAS-FORT WORTH INTL (DFW)
KATZZ TWO DEPARTURE (RNAV)			DALLAS-FORT WORTH, TEXAS

Rwys 31L/R: Standard.
Rwys 17C/R, 18L/R, 35L/C, 36L/R:
Standard with minimum climb of 500'
per NM to 1120.

TOP ALTITUDE:
RWY 17C/R, 18L/R,
35C/L, 36L/R: 10000
RWY 31L/R: 5000



NOTE: Chart not to scale

(NARRATIVE ON FOLLOWING PAGE)

NOTE: RNAV 1.
NOTE: DME/DME/IRU or GPS required.
NOTE: For use by turbojets only.
NOTE: Non-RNAV-capable props: File and expect KINGDOM or COYOTE DEPARTURE.
NOTE: RNAV-capable props: File and expect the SWABR RNAV SID.
NOTE: RADAR required.

KATZZ TWO DEPARTURE (RNAV) 04FEB16
(KATZZZ.KATZZ)
DALLAS-FORT WORTH, TEXAS
DALLAS-FORT WORTH INTL (DFW)



DEPARTURE ROUTE DESCRIPTION

TAKEOFF RWY 17C: Climb heading 176° to intercept course 185° to cross LARRN at or above 5000, then on track 253° to GIGEM, then on track 270° to TANNO, then on track 277° to ROOOO, thence. . . .

TAKEOFF RWY 17R: Climb heading 176° to intercept course 184° to cross LARRN at or above 5000, then on track 253° to GIGEM, then on track 270° to TANNO, then on track 277° to ROOOO, thence. . . .

TAKEOFF RWY 18L/R: Climb heading 176° to 1120, then direct to cross LARRN at or above 5000, then on track 253° to GIGEM, then on track 270° to TANNO, then on track 277° to ROOOO, thence. . . .

TAKEOFF RWY 35C: Climb heading 356° to intercept course 325° to GVINE, then on track 262° to cross KMART at or above 5500, then on track 259° to MARSN, then on track 238° to ROOOO, thence. . . .

TAKEOFF RWY 35L: Climb heading 356° to intercept course 327° to GVINE, then on track 262° to cross KMART at or above 5500, then on track 259° to MARSN, then on track 238° to ROOOO, thence. . . .

TAKEOFF RWY 36L: Climb heading 356° to intercept course 340° to GVINE, then on course 262° to cross KMART at or above 5500, then on track 259° to MARSN, then on track 238° to ROOOO, thence. . . .

TAKEOFF RWY 36R: Climb heading 356° to intercept course 338° to GVINE, then on course 262° to cross KMART at or above 5500, then on track 259° to MARSN, then on track 238° to ROOOO, thence. . . .

. . . .on track 282° to RUFFS, then on track 281° to KATZZ, then on (transition).
Maintain 10000, expect filed altitude 10 minutes after departure.

TAKEOFF RWY 31L/R: Climb heading assigned by ATC, expect radar vectors to ROOOO, thence. . . .

. . . .on track 282° to RUFFS, then on track 281° to KATZZ, then on (transition).
Maintain 5000, expect filed altitude ten minutes after departure.

BRHMA TRANSITION (KATZZ2.BRHMA)