

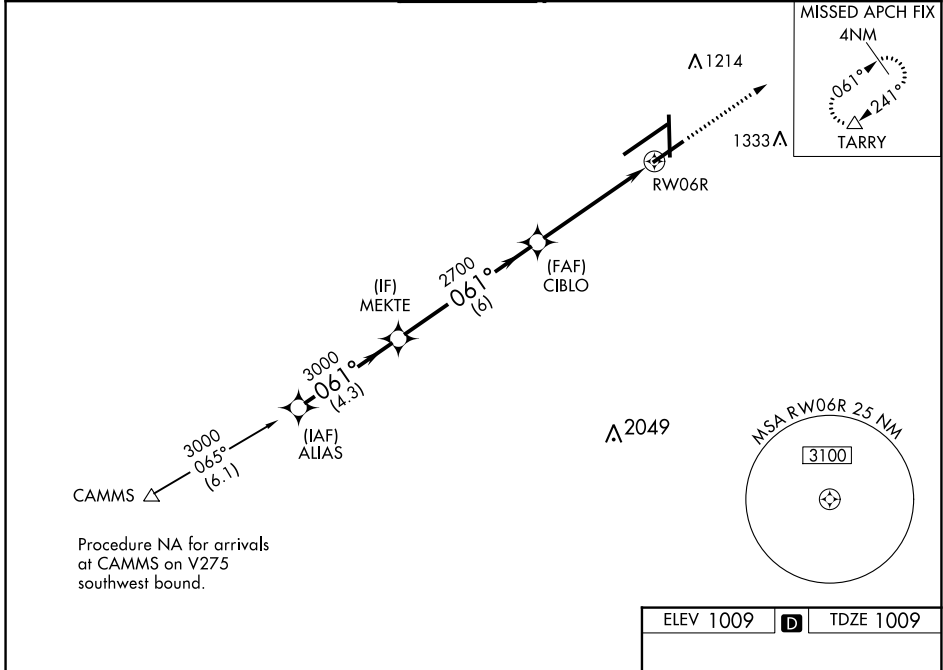
WAAS CH 90414 W06B	APP CRS 061°	Rwy Idg TDZE Apt Elev	7001 1009 1009
--	------------------------	-----------------------------	---

RNAV (GPS) RWY 6R

JAMES M COX DAYTON INTL (DAY)

RNP APCH - GPS.	<p>▼ For uncompensated Baro-VNAV systems, LNAV/VNAV NA below -19°C or above 54°C. Rwy 6R helicopter visibility reduction below ¾ SM NA. Simultaneous approach authorized. LNAV procedure NA during simultaneous operations. Use of FD or AP required during simultaneous operations.</p>	<p>MISSED APPROACH: Climb to 3000 direct TARRY and hold.</p>
-----------------	--	--

ATIS 125.8	COLUMBUS APP CON 118.425 323.15	DAYTON TOWER 119.9 257.7	GND CON 121.9	CLNC DEL 121.75
----------------------	---	------------------------------------	-------------------------	---------------------------

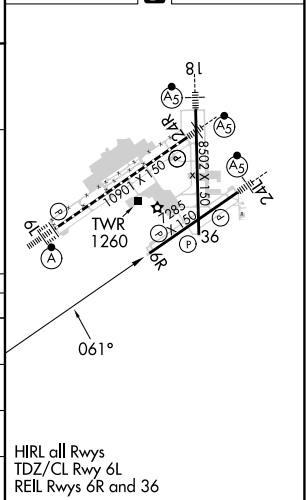


Procedure NA for arrivals at CAMMS on V275 southwest bound.

ELEV 1009	D	TDZE 1009
-----------	----------	-----------

VGSI and RNAV glidepath not coincident (VGSI Angle 3.00/TCH 50).

ALIAS	MEKTE	CIBLO	RWY 6R
3000	3000	2700	1.5 NM to RWY 6R
GP 3.00°			
TCH 53			
	4.3 NM	6 NM	3.6 NM
CATEGORY	A	B	C
LPV DA		1259-¾	250 (300-¾)
LNAV/ VNAV DA		1496-1¾	487 (500-1¾)
LNAV MDA	1520-1	511 (600-1)	1520-1½ 511 (600-1½)
C CIRCLING	1580-1	571 (600-1)	1580-1½ 571 (600-1½)
			1640-2 631 (700-2)



EC-2, 22 FEB 2024 to 21 MAR 2024

EC-2, 22 FEB 2024 to 21 MAR 2024