

WAAS CH 56234 W18A	APP CRS 184°	Rwy Idg TDZE 835 Apt Elev 835	3800
--	------------------------	---	-------------

RNAV (GPS) RWY 18

DUPONT-LAPEER (D95)

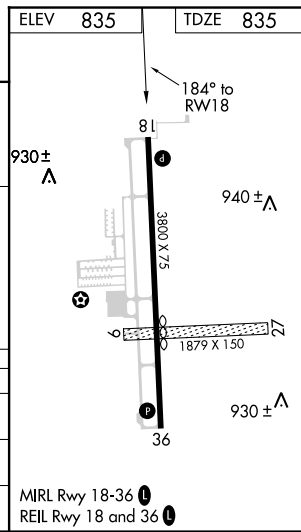
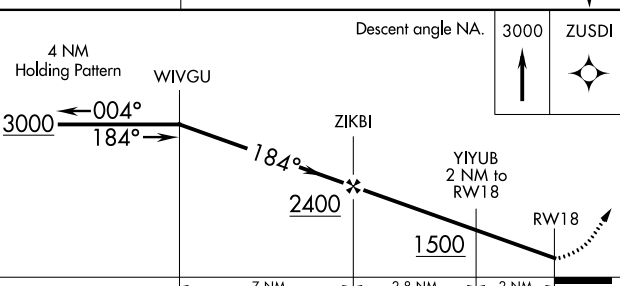
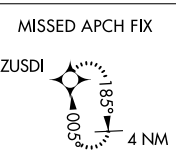
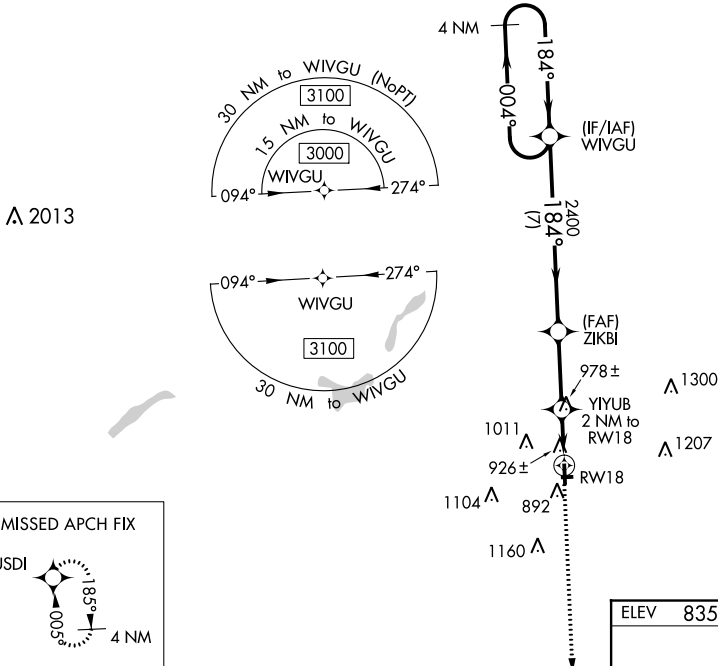
⚠ DME/DME RNP-0.3 NA. Helicopter visibility reduction below 3/4 SM NA. When local altimeter setting not received, use Flint altimeter setting and increase all MDAs 60 feet and increase LP Cat C visibility 1/8 mile, LNAV Cat C and Circling Cat C visibility 1/4 mile. Circling NA to Rwy 9 and 27.

MISSED APPROACH:
Climb to 3000 direct ZUSDI and hold.

AWOS-3P
134.050

GREAT LAKES APP CON ★
118.8 257.9

UNICOM
123.0 (CTAF) ①



CATEGORY	A	B	C	D
LP MDA	1180-1 345 (400-1)			NA
LNAV MDA	1240-1	405 (500-1)	1240-1 1/8 405 (500-1 1/8)	NA
C CIRCLING	1300-1 465 (500-1)	1380-1 545 (600-1)	1460-1 3/4 625 (700-1 3/4)	NA

EC-1, 07 OCT 2021 to 04 NOV 2021

EC-1, 07 OCT 2021 to 04 NOV 2021

WAAS CH 60934 W36A	APP CRS 004°	Rwy Idg TDZE Apt Elev	3800 832 835
--	------------------------	-----------------------------	---

RNAV (GPS) RWY 36

DUPONT-LAPEER (D95)

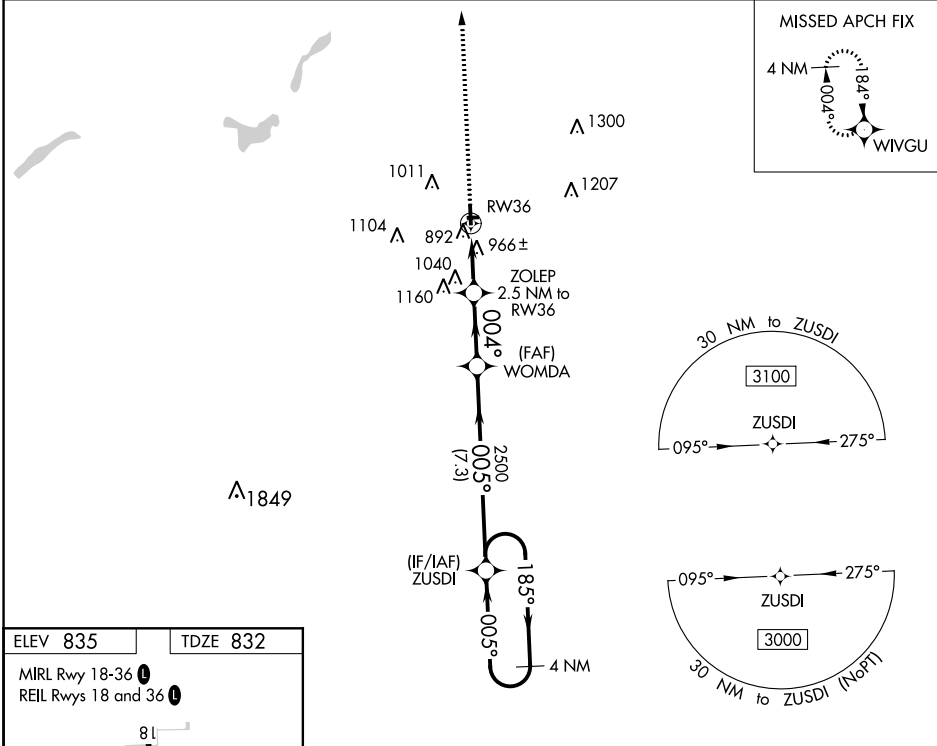
▽ DME/DME RNP-0.3 NA. Helicopter visibility reduction below 3/4 SM NA. When local altimeter setting not received, use Flint altimeter setting and increase all MDA 60 feet and increase LNAV Cat C visibility 1/8 mile and LP Cat C and Circling Cat C visibility 1/4 mile. Circling NA to Rwy 9 and 27.

MISSED APPROACH:
Climb to 3000 direct WIVGU and hold.

AWOS-3P
134.050

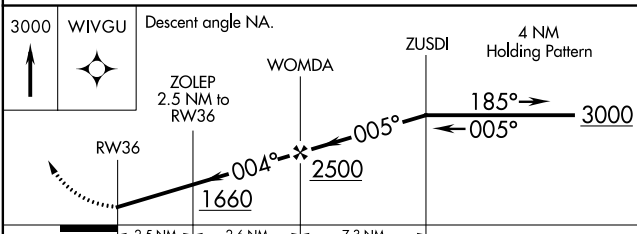
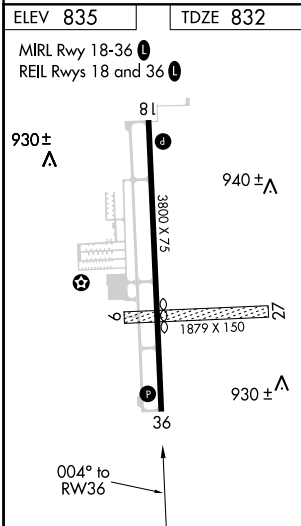
GREAT LAKES APP CON ★
118.8 257.9

UNICOM
123.0 (CTAF) ①



EC-1, 07 OCT 2021 to 04 NOV 2021

EC-1, 07 OCT 2021 to 04 NOV 2021



CATEGORY	A	B	C	D
LP MDA	1220-1	388 (400-1)	1220-1 1/8 388 (400-1 1/8)	NA
LNAV MDA	1260-1	428 (500-1)	1260-1 1/4 428 (500-1 1/4)	NA
☑ CIRCLING	1300-1 465 (500-1)	1380-1 545 (600-1)	1460-1 3/4 625 (700-1 3/4)	NA

VORTAC FNT 116.9	APP CRS 080°	Rwy Idg TDZE Apt Elev	N/A N/A 835
Chan 116			

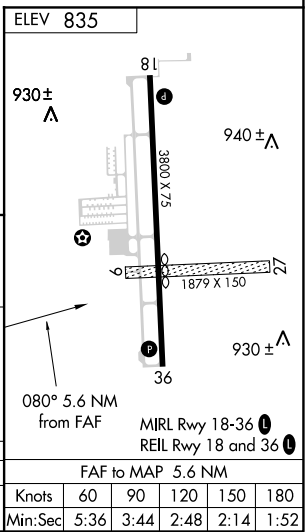
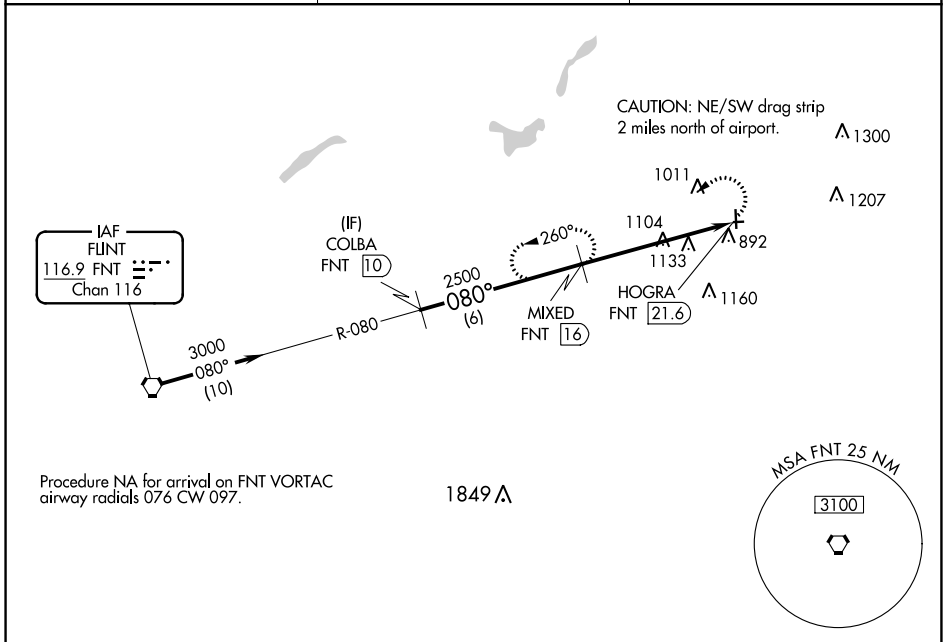
VOR-A
DUPONT-LAPEER (D95)

DME required.

▼ Circling NA to Rwy 9 and 27. Circling Rwy 18 NA at night. Rwy 18 helicopter visibility reduction below 1 SM NA.

MISSED APPROACH: Climbing left turn to 2500 on FNT VORTAC R-080 to MIXED 16 DME and hold.

AWOS-3P 134.050	GREAT LAKES APP CON ★ 118.8 257.9	UNICOM 123.0 (CTAF) 0
---------------------------	---	--



	COLBA FNT 10	MIXED FNT 16	2500	FNT R-080	MIXED FNT 16
	3000	2500			
	6 NM		5.6 NM		

CATEGORY	A	B	C	D	FAF to MAP 5.6 NM					
◻ CIRCLING	1400-1	565 (600-1)	1460-1¾ 625 (700-1¾)	NA	Knots	60	90	120	150	180
					Min:Sec	5:36	3:44	2:48	2:14	1:52

EC-1, 07 OCT 2021 to 04 NOV 2021

EC-1, 07 OCT 2021 to 04 NOV 2021