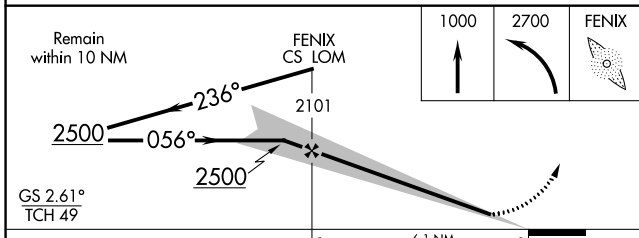
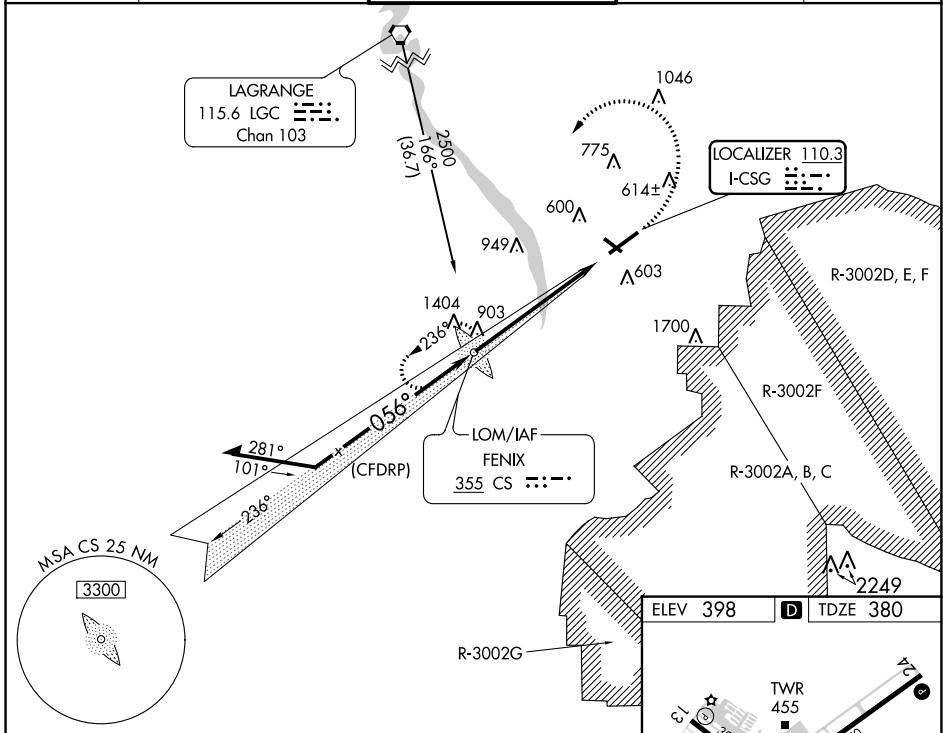


LOC I-CSG <b>110.3</b>	APP CRS <b>056°</b>	Rwy Idg TDZE Apt Elev	<b>6997</b> <b>380</b> <b>398</b>
---------------------------	------------------------	-----------------------------	---

# ILS or LOC RWY 6

COLUMBUS (CSG)

ADF or RADAR required.			MISSED APPROACH: Climb to 1000, then climbing left turn to 2700 direct FENIX LOM and hold, continue climb-in-hold to 2700.	
Circling to Rwy 13, 24 and 31 NA at night. Autopilot coupled approach NA below 900. Rwy 6 helicopter visibility reduction below 3/4 SM NA. For inop ALS, increase S-ILS 06 all Cats visibility to RVR 4500. For inop ALS, increase S-LOC 06 Cats A and B visibility to RVR 5500 and Cats C and D visibility to 1 1/4 SM.				
ATIS <b>127.75</b>	ATLANTA APP CON * <b>125.5 323.1</b>	COLUMBUS TOWER * <b>120.1 (CTAF) 257.8</b>		GND CON <b>121.9 348.6</b>
				UNICOM <b>122.95</b>



CATEGORY	A	B	C	D
S-ILS 6		664/40	284 (300-3/4)	
S-LOC 6	1020/40	640 (700-3/4)	1020-1 3/8	640 (700-1 3/8)
CIRCLING	1020-1	622 (700-1)	1140-2 1/4 742 (800-2 1/4)	1300-3 902 (1000-3)

REIL Rwy 24	
HIRL Rwy 6-24	
MIRL Rwy 13-31	
REIL Rws 13 and 31	
FAF to MAP 6.1 NM	
Knots	60 90 120 150 180
Min:Sec	6:06 4:04 3:03 2:26 2:02

SE-4, 22 FEB 2024 to 21 MAR 2024

SE-4, 22 FEB 2024 to 21 MAR 2024